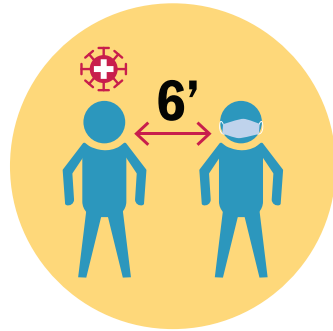


# Determining Close Contacts in School Settings

In general a close contact is anyone who was within 6' of a confirmed case for 15 minutes or more over the course of a day. For all staff/adults in any school setting, and for students in general school settings (lunchrooms, common areas, etc.), the following apply:

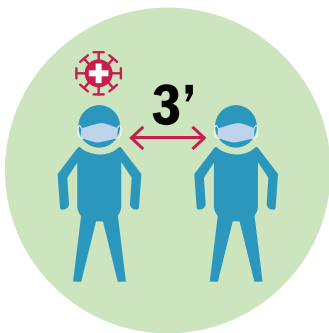


One positive regardless of masking – closer than 6' – **QUARANTINE**

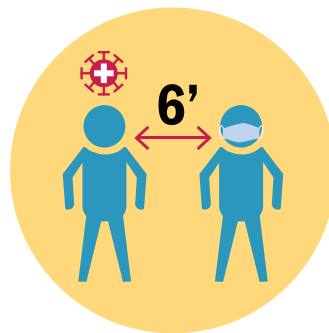


Vaccinated, identified as close contact: **MONITOR FOR SYMPTOMS** and test 3-5 days after exposure (*No quarantine unless symptoms develop*)

For students in **classroom settings** only. If students are seated closer than 6' apart, additional precautions, such as increased ventilation or screening and/or testing programs, must be in place for the following to apply:

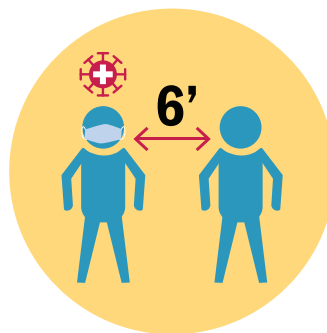


One positive, both masked the whole time, closer than 3' – **QUARANTINE**



One positive, at least one unmasked, closer than 6' – **QUARANTINE**

OR



Vaccinated, identified as close contact: **MONITOR FOR SYMPTOMS** and test 3-5 days after exposure (*No quarantine unless symptoms develop*)