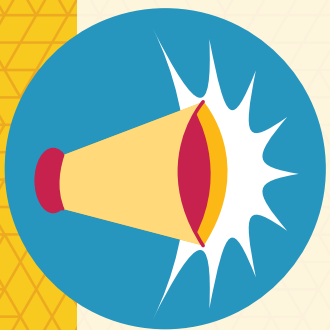


FOR THE SAFETY OF OUR GUESTS AND STAFF:



In most parts of our building, masks are optional for fully vaccinated people. For healthcare services in the building and those not fully vaccinated, masks are still required.

Full vaccination begins 2 weeks after your final vaccine in the series.



Customers may be asked to show proof of vaccination including their COVID-19 vaccine card, a photo of their card or their My IR report.



Customers not complying with the mask mandate should not enter. Other service options are available online at **www.snohd.org**.