

# COVID-19 Media Briefing

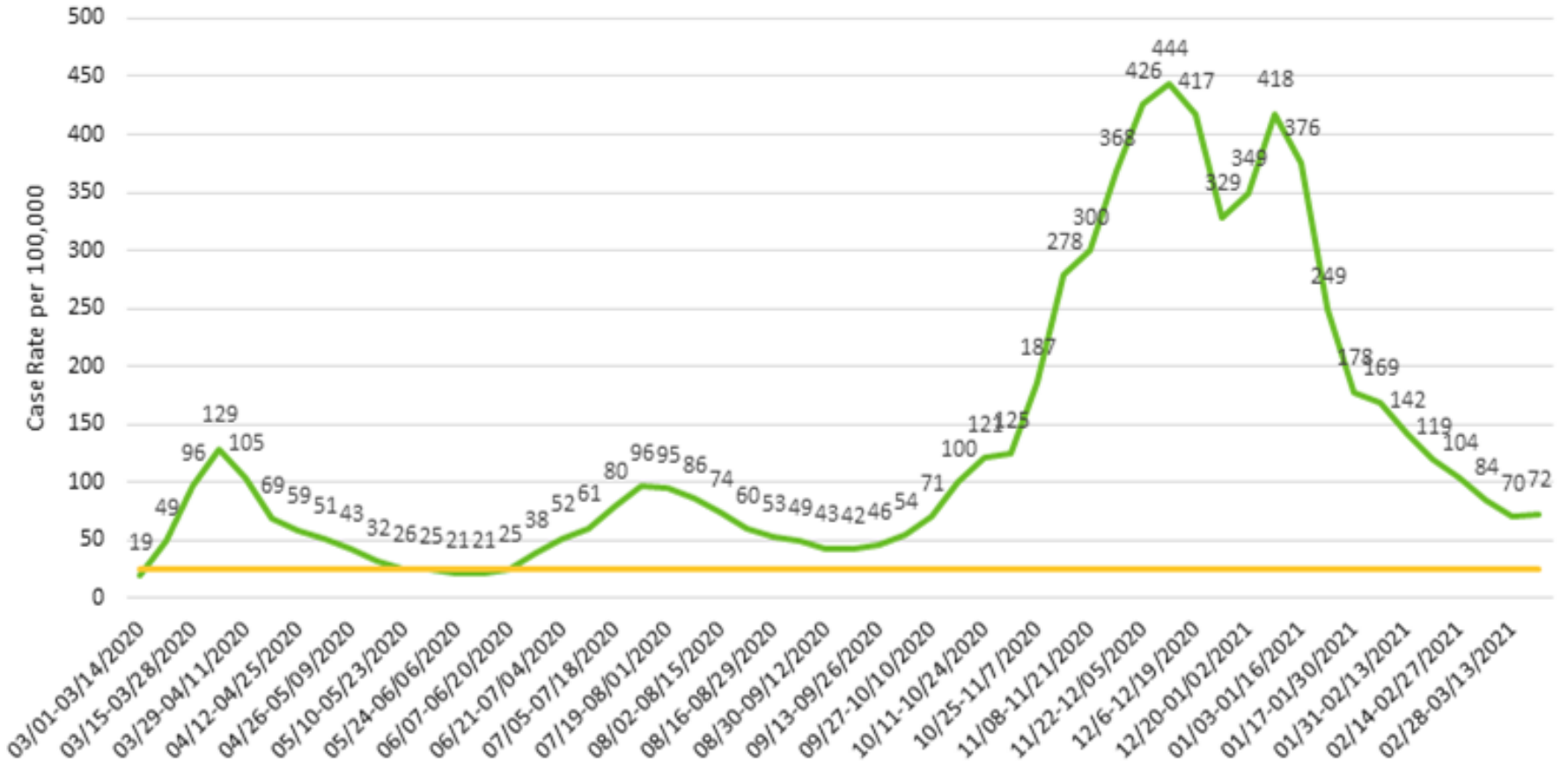
**Dr. Chris Spitters**  
**Health Officer**



**March 23, 2021**

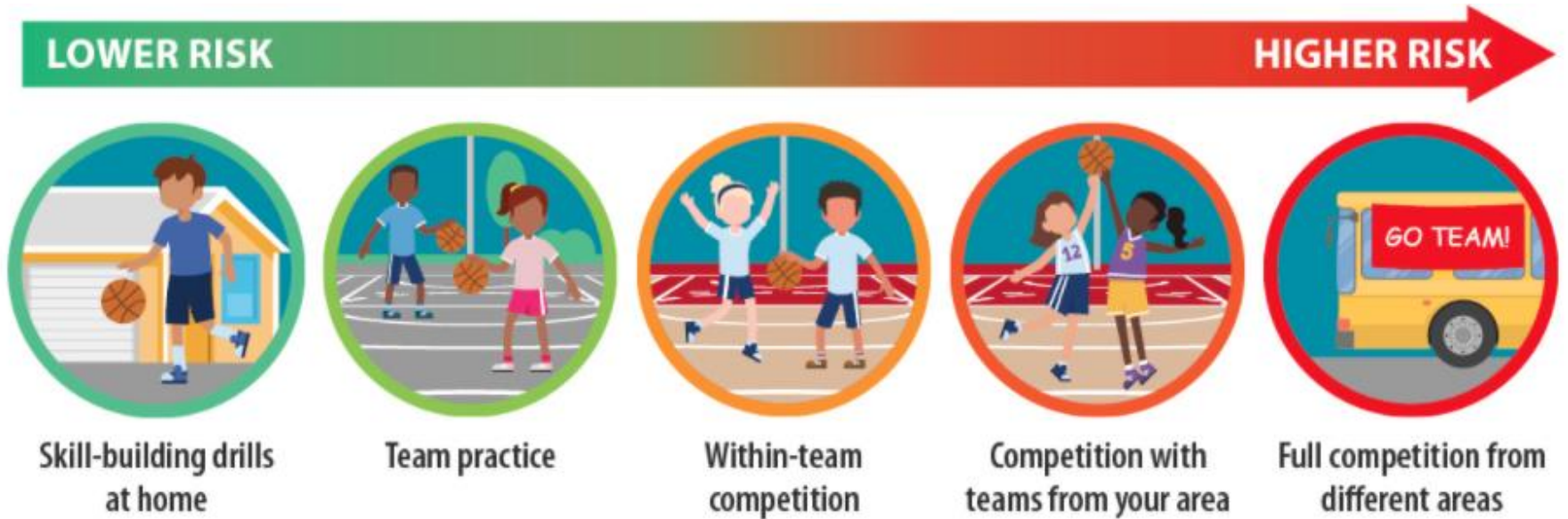
# COVID-19 Rolling 2-week Case Rate

Snohomish County COVID-19 Case Rate per 100,000 for 2-week Rolling Periods



Through March 20, 2021

# A Note on Youth & School Sports



[cdc.gov/coronavirus](https://cdc.gov/coronavirus)

CS 317099-E 05/28/2020

# Revisions to COVID Data Releases

Report	Current frequency	New frequency	Effective date
COVID case counts	Daily	Weekly	3/29/2021
Bi-weekly COVID epi report	Every 2 weeks	Monthly	3/29/2021
COVID maps (heat map & ZIP)	Every 2 weeks	Monthly	3/29/2021
WAHealth hospitalization capacity	Daily	Daily	No change
2-week case rates (graph)	Weekly	Weekly	No change
COVID hospital admissions (graph)	Weekly	Weekly	No change
COVID deaths (graph)	Weekly	Weekly	No change
COVID cases in LTCF (graph)	Weekly	Weekly	No change
Vaccine allocations & administered	Weekly	Weekly	No change
COVID race/ethnicity report	~Monthly	~Monthly	No change
Vaccine demographics report	~Monthly	~Monthly	No change
COVID outbreak report	~Monthly	~Monthly	No change

# One Year of COVID Testing Operations





# Estimated Timeline to Fully Vaccinate 600,000 Snohomish County Residents

**47K** 36K mRNA  
11K J&J\*

doses per week

\*Requires less doses to fully vaccinate



As of March 2021

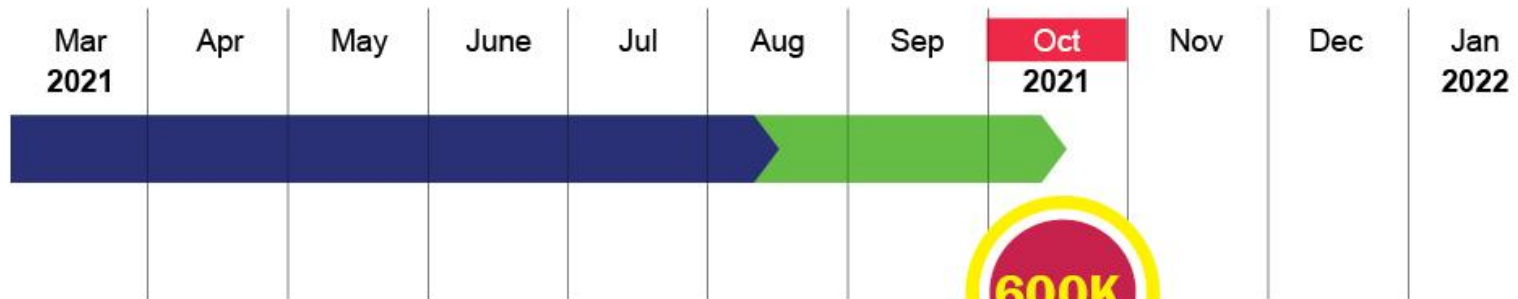


# Estimated Timeline to Fully Vaccinate 600,000 Snohomish County Residents

**47K** 36K mRNA  
11K J&J\*  
doses per week

**36K**  
mRNA doses per week

\*Requires less doses to fully vaccinate



As of March 2021



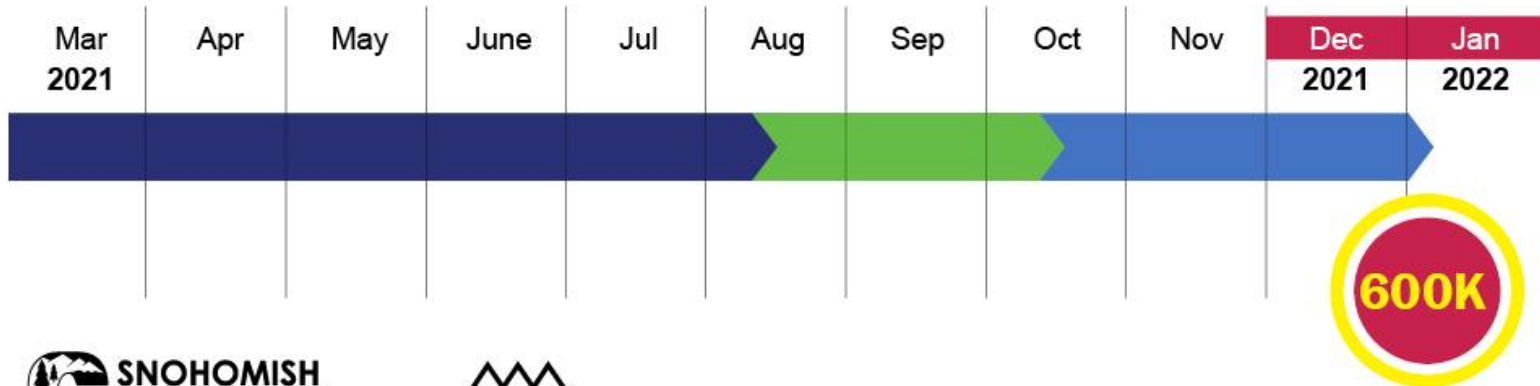
# Estimated Timeline to Fully Vaccinate 600,000 Snohomish County Residents

**47K** 36K mRNA  
11K J&J\*  
doses per week

**36K**  
mRNA doses per week

**25K**  
mRNA doses per week

\*Requires less doses to fully vaccinate



As of March 2021





**SNOHOMISH**  
HEALTH DISTRICT  
[WWW.SNOHD.ORG](http://WWW.SNOHD.ORG)