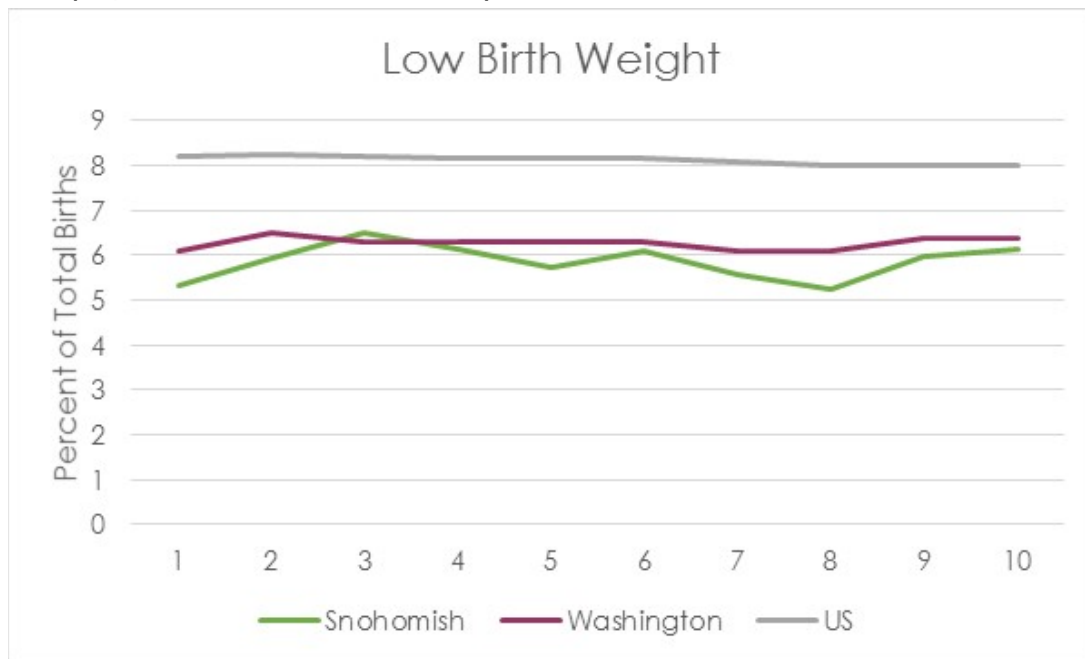




## LOW BIRTH WEIGHT

Snohomish County, Washington State & US 2005-2014

Low birth weight is defined as the percent of total births weighing less than 2500 grams (5 pounds, 8.18 ounces).



Year	SNOHOMISH				WASHINGTON		
	Live Births with LBW	Births	Percent of Births with LBW	95% C.I.*	Live Births with LBW	Births	Percent of Births with LBW
2005	466	8760	5.3	(4.9, 5.8)	5033	82318	6.1
2006	530	8927	5.9	(5.4, 6.5)	5654	86589	6.5
2007	620	9520	6.5	(6.0, 7.1)	5613	88791	6.3
2008	598	9749	6.1	(5.7, 6.7)	5711	90079	6.3
2009	525	9160	5.7	(5.3, 6.2)	5568	89046	6.3
2010	543	8934	6.1	(5.6, 6.6)	5449	86331	6.3
2011	496	8867	5.6	(5.1, 6.1)	5336	86781	6.1
2012	480	9167	5.2	(4.8, 5.7)	5342	87237	6.1
2013	561	9379	6.0	(5.5, 6.5)	5545	86471	6.4
2014	582	9511	6.1	(5.6, 6.6)	5701	88487	6.4

95% Confidence Interval: A confidence interval is a range of values that has a specified probability of containing the rate. Narrow confidence intervals indicate that rate is precisely estimated, while wider confidence intervals indicate that the estimated rate is less precisely estimated.



**SNOHOMISH**  
HEALTH DISTRICT  
WWW.SNOHD.ORG