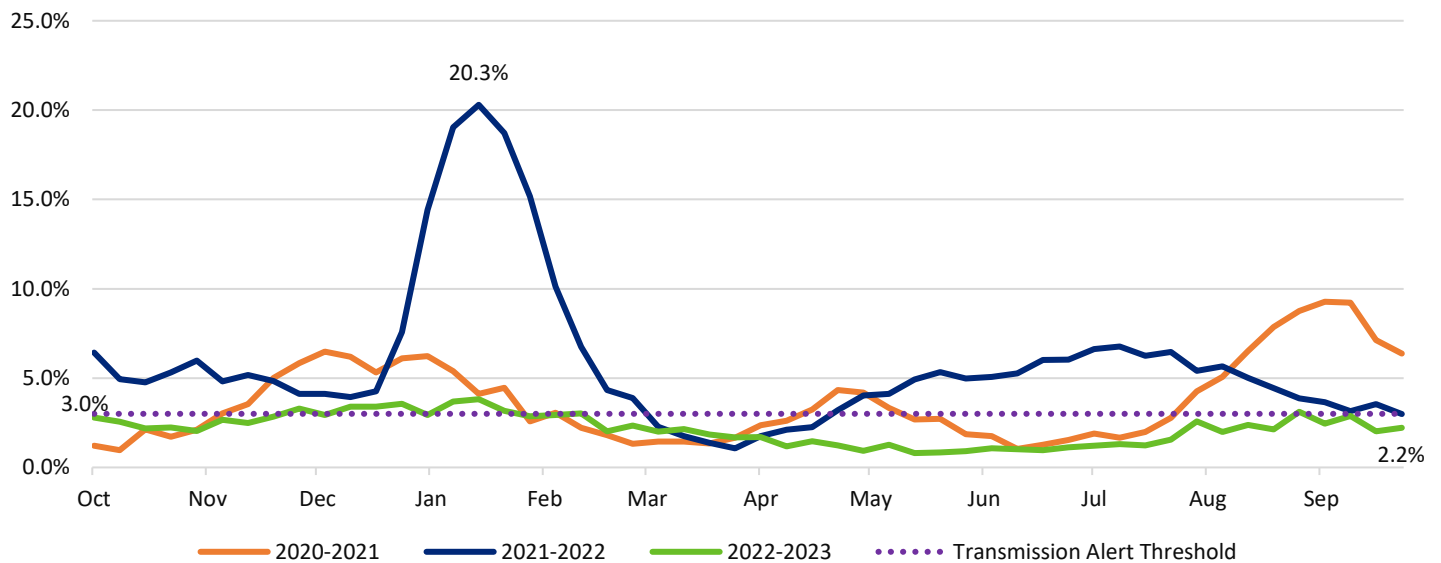


Respiratory Virus Report

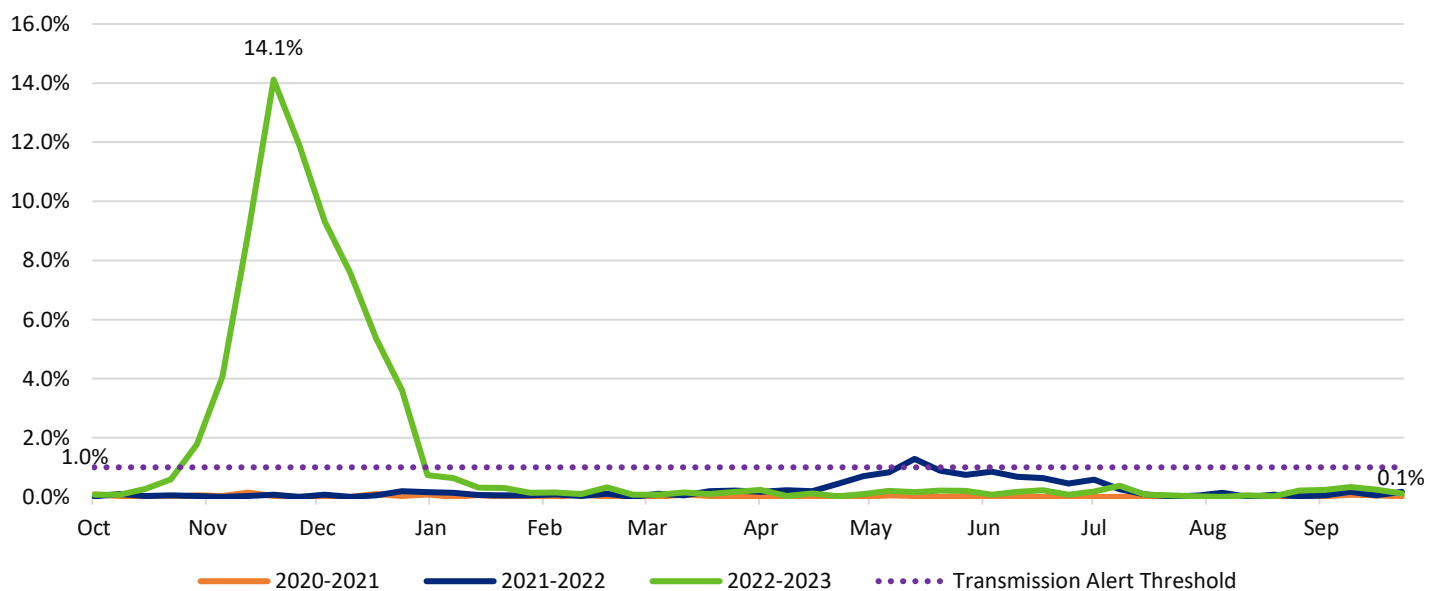
Week 39 – 9/24-9/30/2023 (data as of 9/30/2023)

Virus		
COVID-19	2.2%	Below threshold
Influenza	0.1%	Below threshold
RSV	0.06%	Below threshold

Snohomish County % of Emergency Department Visits with a COVID-19 Diagnosis

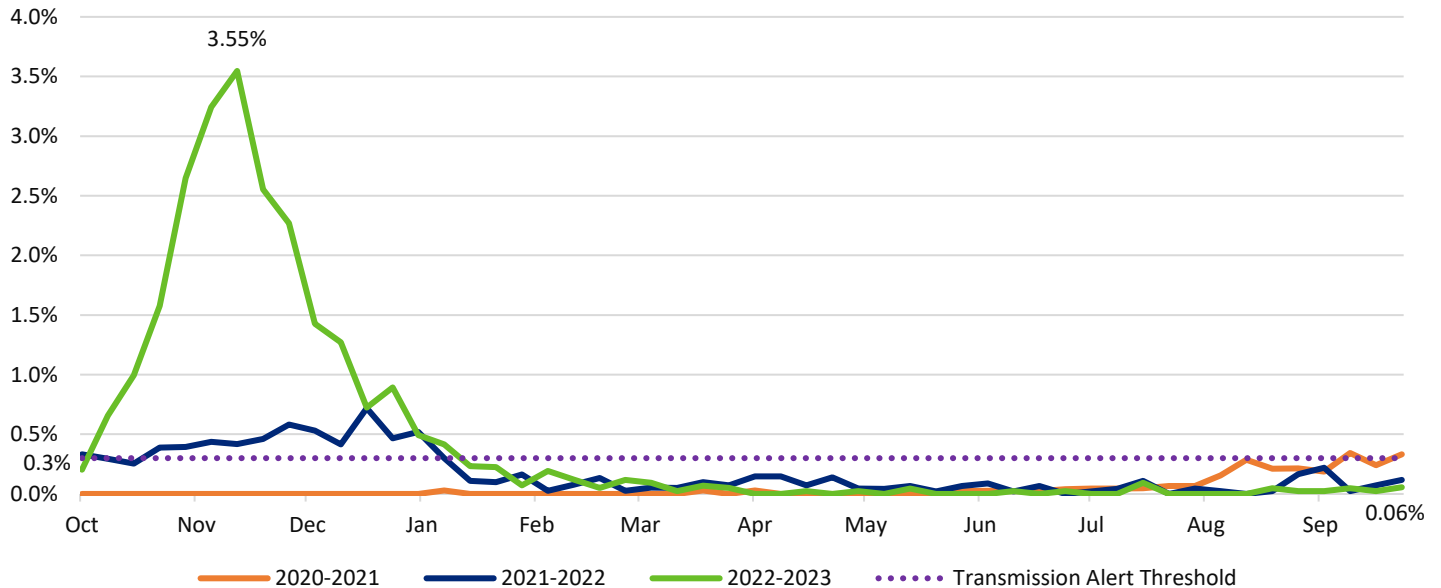


Snohomish County % of Emergency Department Visits with an Influenza Diagnosis



Respiratory Virus Report

Snohomish County % of Emergency Department Visits with an RSV Diagnosis



Data source:

All data were queried from the Electronic Surveillance System for the Early Notification of Community-Based Epidemics (ESSENCE) from the National Syndromic Surveillance Program – BioSense Platform. Data included are the percent of all emergency visits from hospitals in Snohomish County with a ICD 10-CM discharge diagnosis of COVID-19, Influenza or respiratory syncytial virus (RSV).

Seasonal thresholds were calculated using the moving epidemic method (MEM) first established in Europe to calculate thresholds for seasonal influenza surveillance.

MEM references:

<https://onlinelibrary.wiley.com/doi/10.1111/j.1750-2659.2012.00422.x>

<https://www.who.int/publications/i/item/9789241506601>