

## Weekly COVID-19 Graphs

January 1 – July 29, 2023

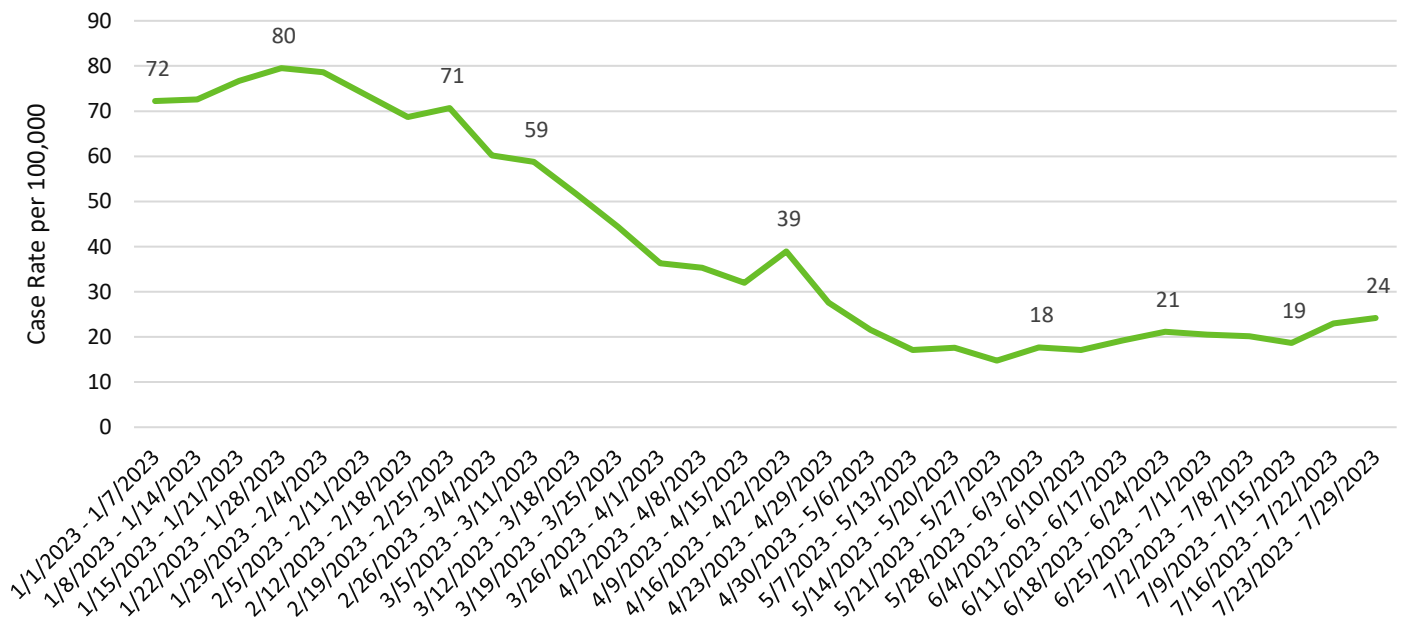
### CASE DATA:

The Washington State Disease Reporting System (WDRS) is the data source for all case data. Some data have been suppressed due to inaccuracies. Not all tables and graphs will have the same denominator. All trend data are by symptom onset date or date of first positive COVID test. All data are preliminary and subject to change.

### SNOHOMSH COUNTY SUMMARY:

- Snohomish County case rates increased slightly over the last two weeks. (Only cases tested by a healthcare provider or laboratory are counted in this report. Homebased tests are not reported to public health and are not included in these data.)
- COVID-19-related hospitalizations increased slightly the week of July 16<sup>th</sup> and have remained steady at 2.5/100,000.
- COVID-19 transmission was <50/100,000 across most zip codes in Snohomish County. An increase in COVID-19 case rates were seen in the east rural part of the county.
- Case rates increased in most age groups except for <15 and amongst 60–69-year-olds. Highest case-rates are amongst our 70+ population, which is due to higher rates of testing, and small population size.
- Case rates week to week were variable across the race/ethnicity groups. Increases were seen in Asians, Black/African Americans, and non-Hispanic Whites. Decreases were seen in American Indian/Alaska Native, Hispanic/Latino/a/x, and Native Hawaiian/Pacific Islanders.
- There has been an increase in the number of cases associated with reported LTCF outbreaks in the past couple of weeks. There have been 5 new LTCF outbreak in the past month.

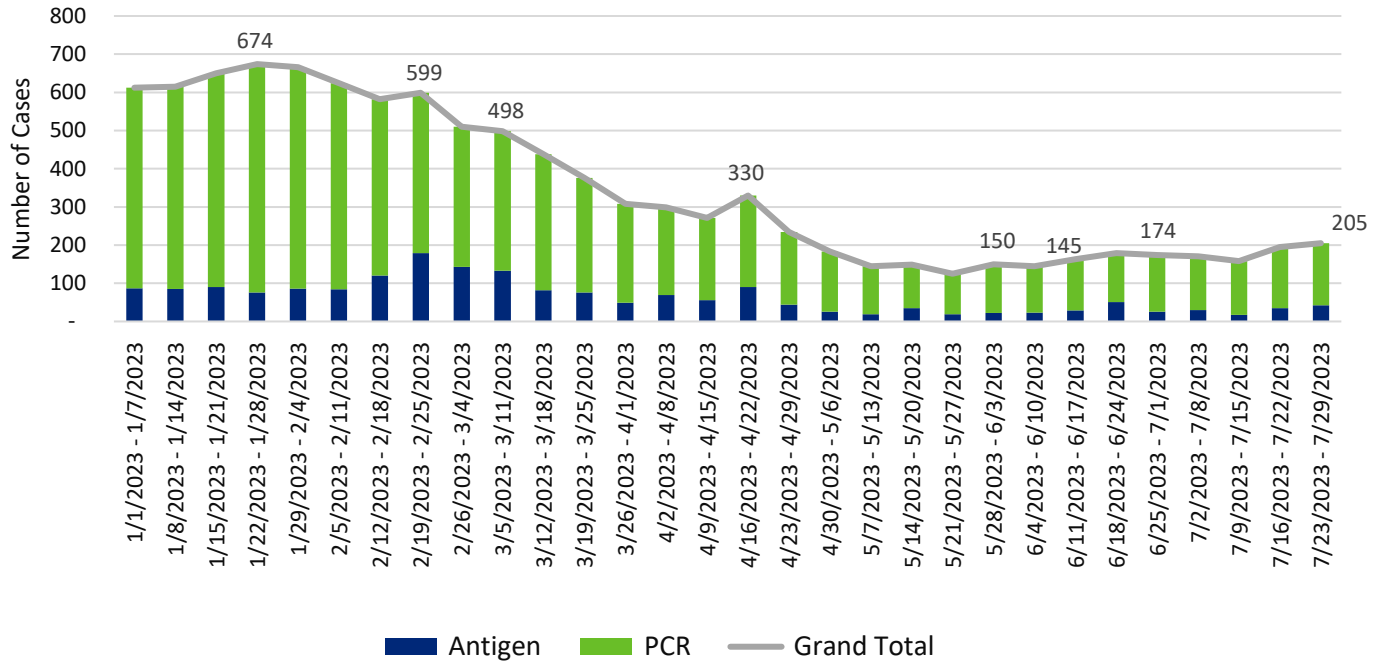
**Snohomish County COVID-19 Weekly Case Rates per 100,000 by Symptom Onset Date**



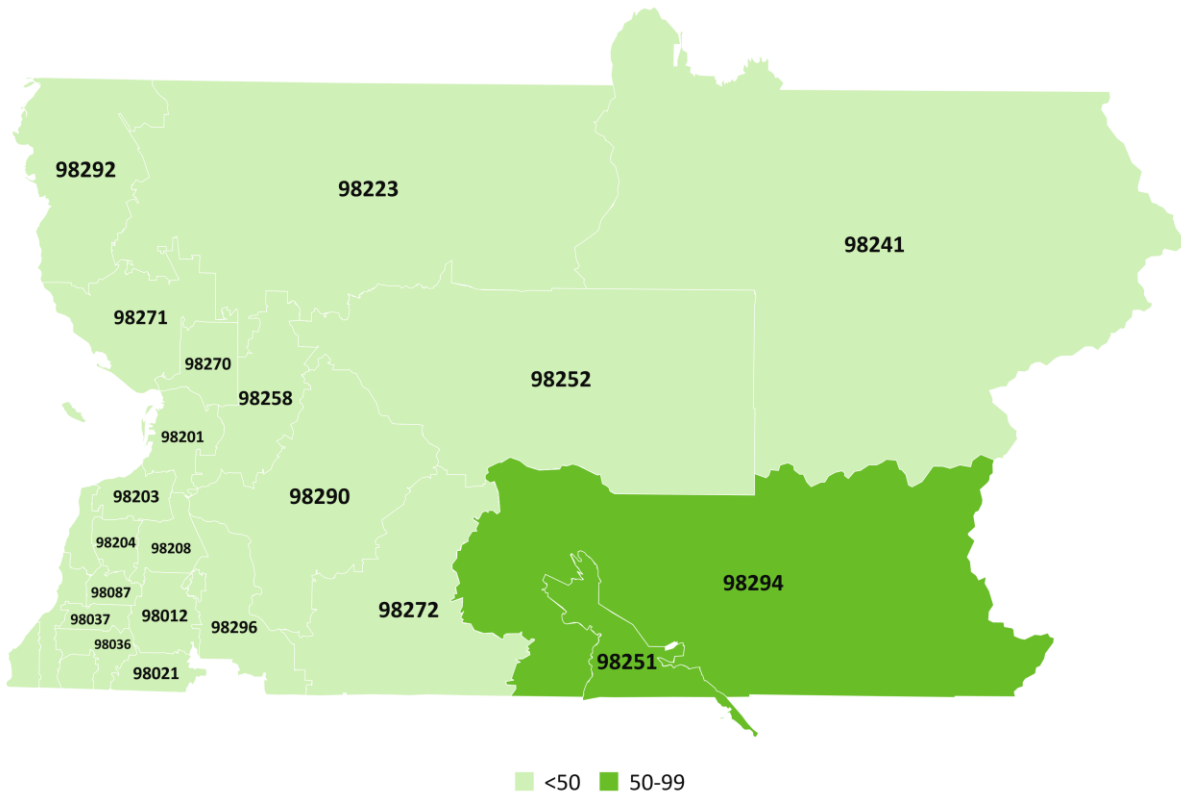
## Weekly COVID-19 Graphs

January 1 – July 29, 2023

### Snohomish County COVID-19 Cases by Onset Date



### Snohomish County COVID-19 Case Rates per 100,000 by Zip Code July 23-29, 2023

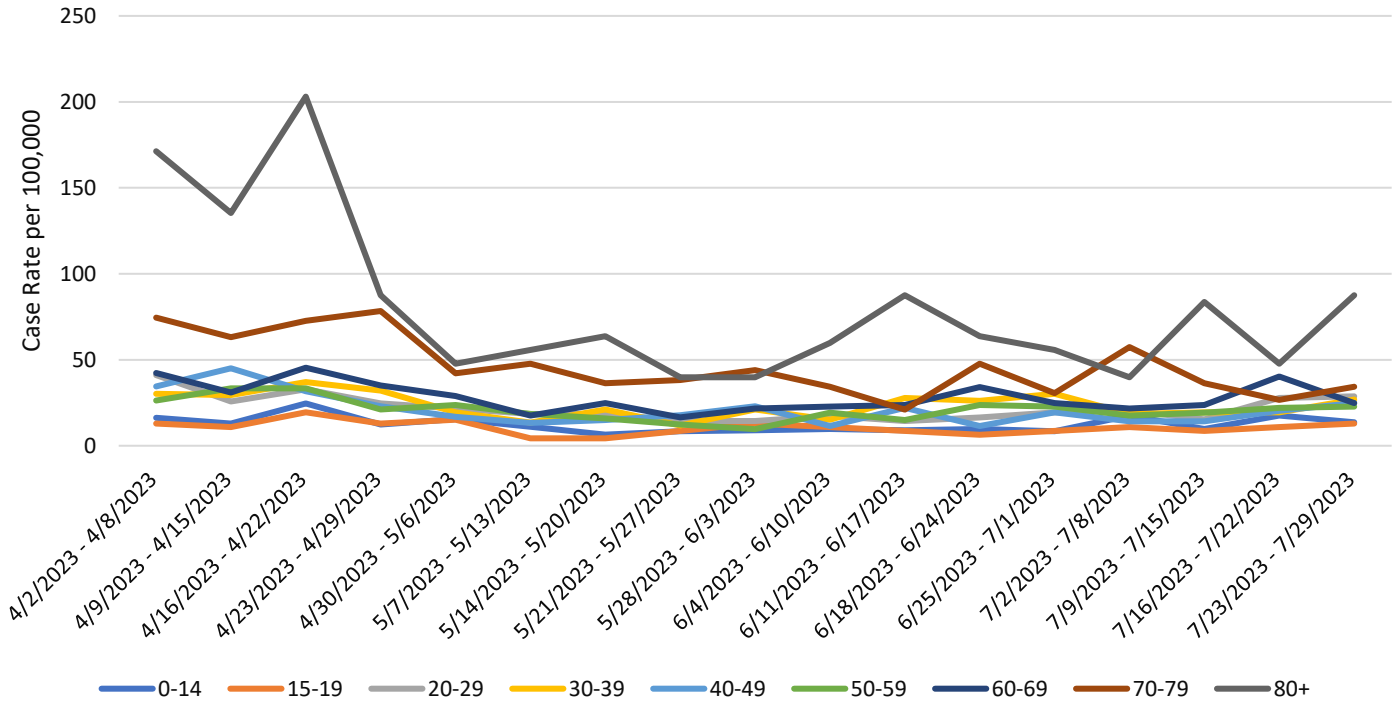


Powered by Bing  
© TomTom

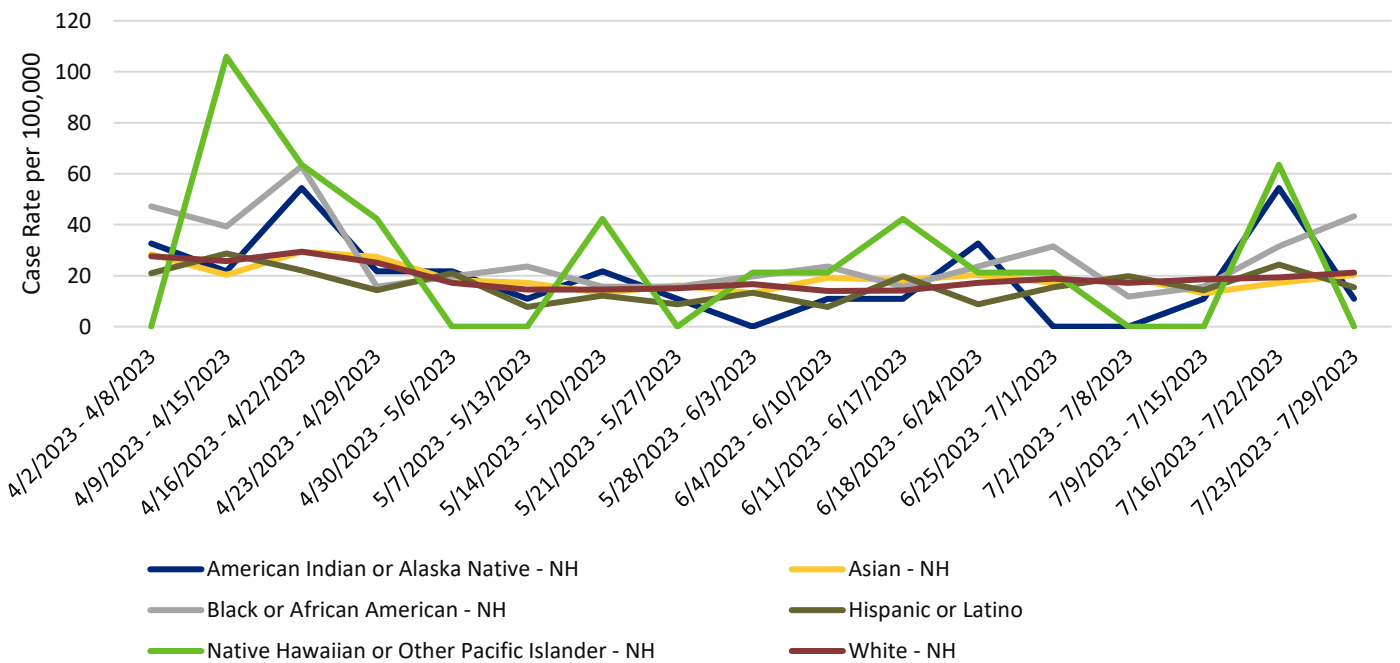
## Weekly COVID-19 Graphs

January 1 – July 29, 2023

### Snohomish County COVID-19 Case Rates per 100,000 by Illness Onset Date and Age Group



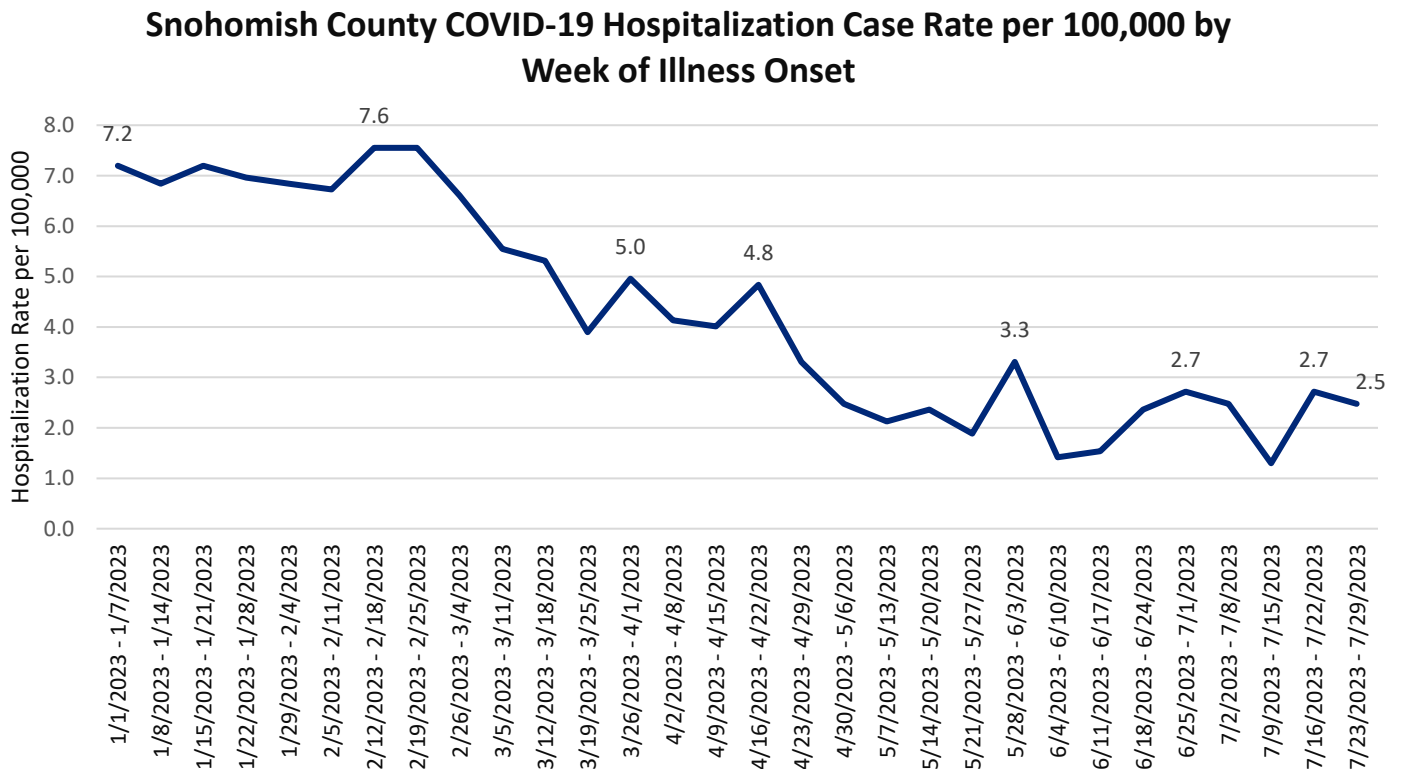
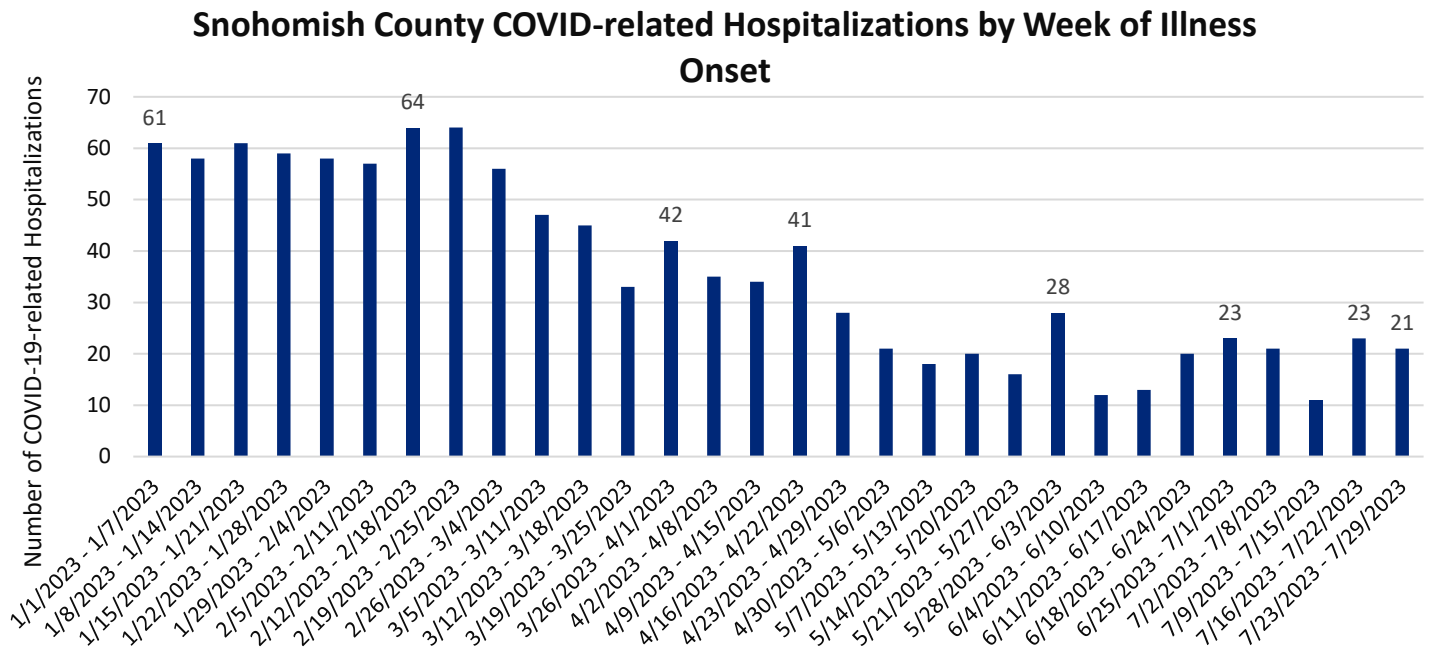
### Snohomish County COVID-19 Case Rates per 100,000 by Illness Onset Date and Race/Ethnicity



## Weekly COVID-19 Graphs

January 1 – July 29, 2023

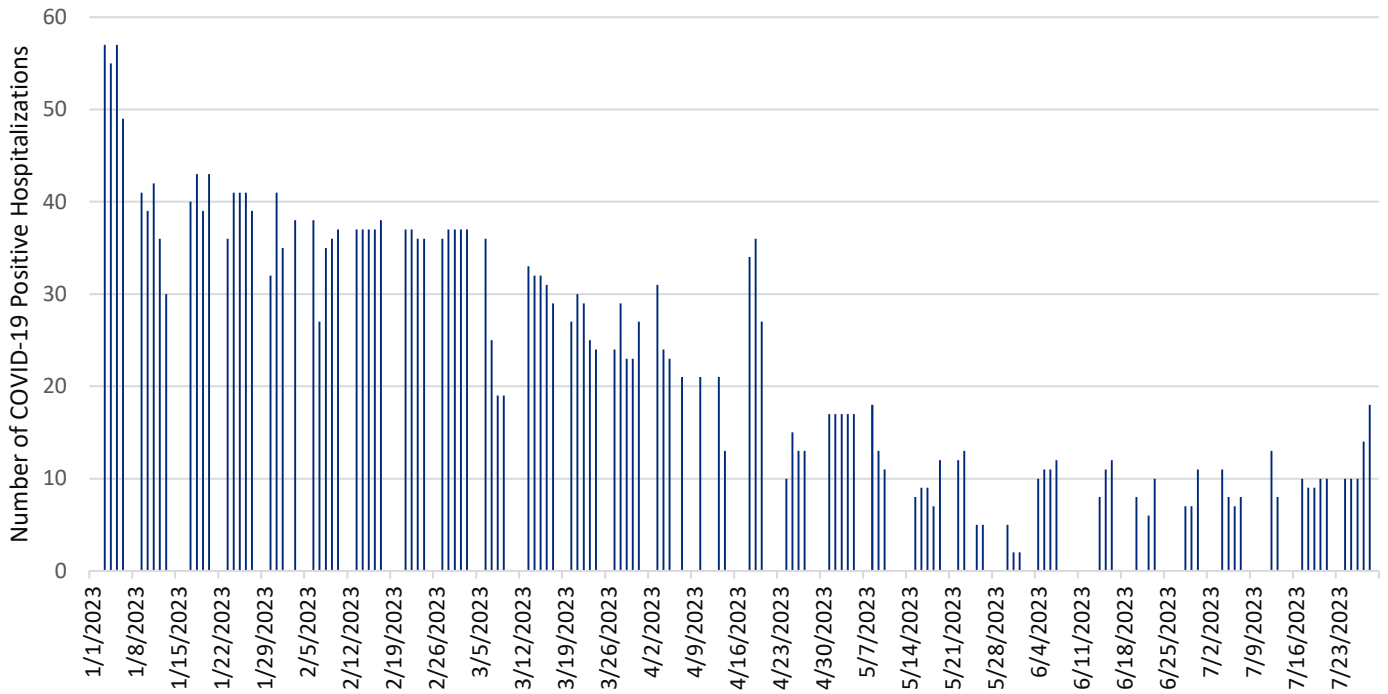
### HOSPITALIZATIONS:



## Weekly COVID-19 Graphs

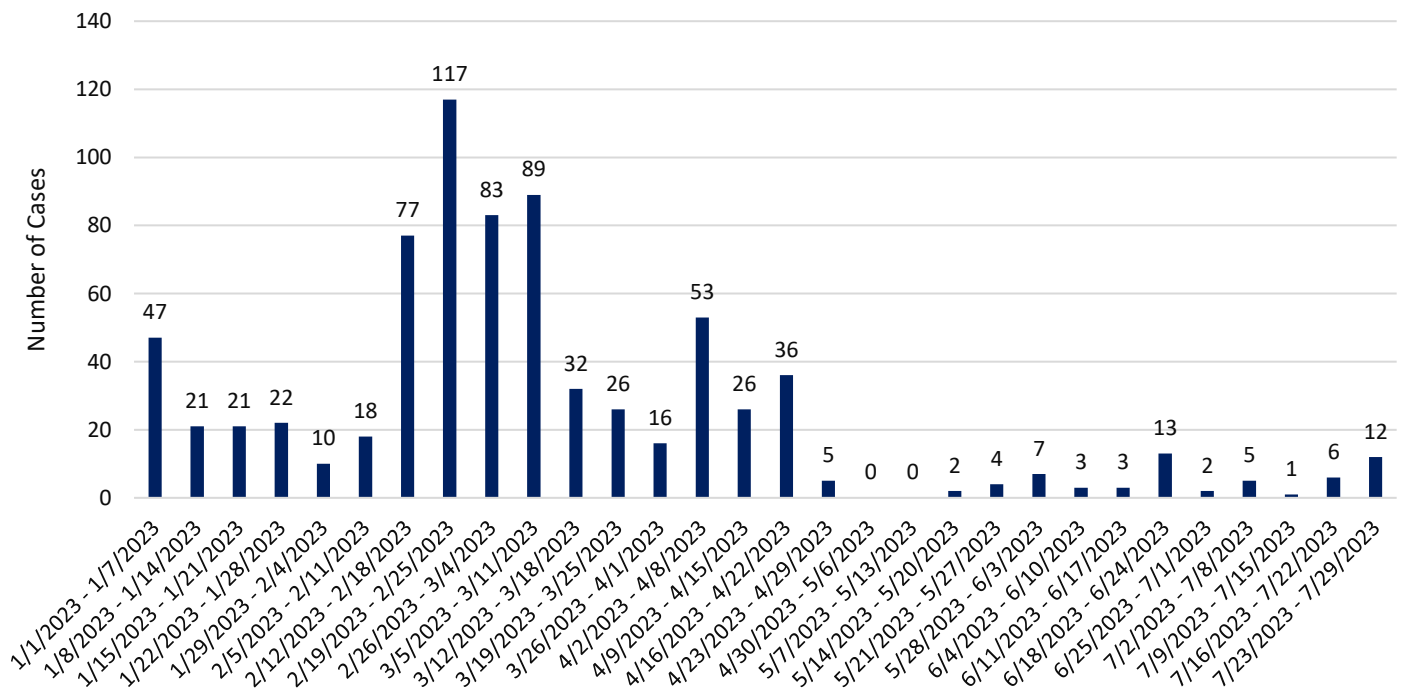
January 1 – July 29, 2023

### Snohomish County Point-in-Time COVID-19 Hospital Census



\*Data source: WA Health ([wahealth.doh.wa.gov](https://wahealth.doh.wa.gov))

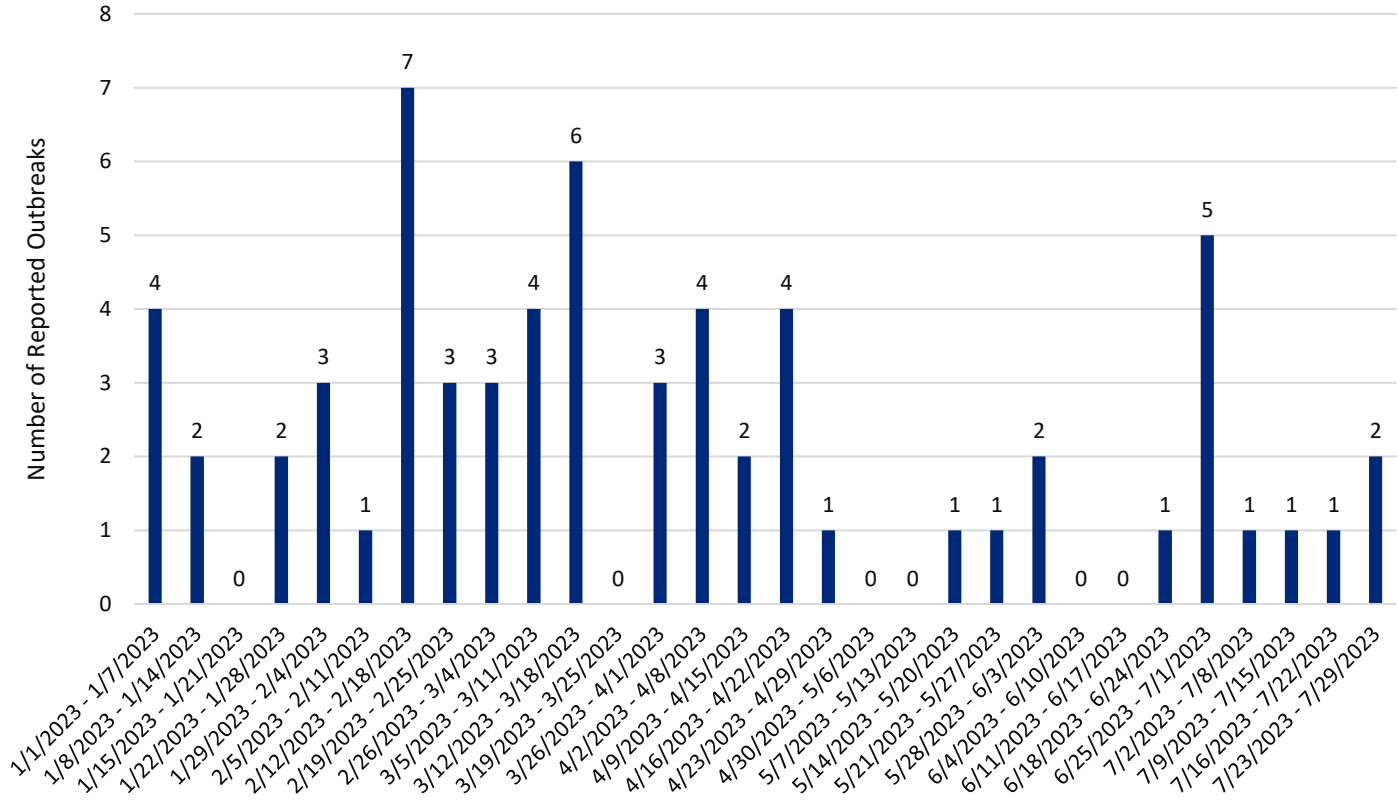
### Snohomish County Long-term Care Facility Outbreak Associated COVID-19 Cases by Onset Date



## Weekly COVID-19 Graphs

January 1 – July 29, 2023

### Snohomish County Long-term Care Facility & Adult Family Home COVID-19 Outbreaks by Date of Outbreak Notification



New Cases (per 100,000 population in the last 7 days)	Indicators	Low	Medium	High
Fewer than 200 <b>24</b>	New COVID-19 admissions per 100,000 population (7-day total) <b>2.5</b>	<10.0	10.0-19.9	≥20.0
	Percent of staffed inpatient beds occupied by COVID-19 patients (7-day average) <b>2%</b>	<10.0%	10.0-14.9%	≥15%
200 or more	New COVID-19 admissions per 100,000 population (7-day total)	NA	<10.0	≥10.0
	Percent of staffed inpatient beds occupied by COVID-19 patients (7-day average)	NA	<10%	≥10.0%

#### Additional Resources:

- Washington State Department of Health COVID-19 Data Dashboard: <https://doh.wa.gov/emergencies/covid-19/data-dashboard>