

Weekly COVID-19 Graphs

January 1 – July 1, 2023

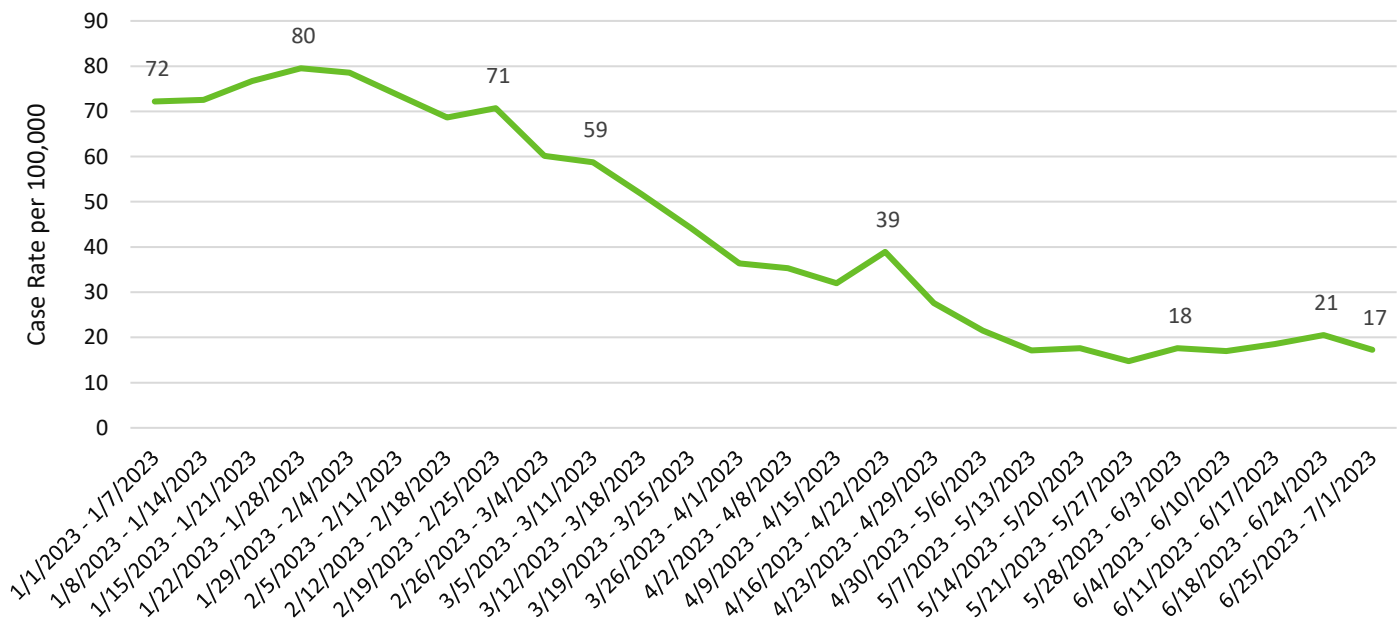
CASE DATA:

The Washington State Disease Reporting System (WDRS) is the data source for all case data. Some data have been suppressed due to inaccuracies. Not all tables and graphs will have the same denominator. All trend data are by symptom onset date or date of first positive COVID test. All data are preliminary and subject to change.

SNOHOMSH COUNTY SUMMARY:

- Snohomish County case rates remain relatively steady. Only cases tested by a healthcare provider or laboratory are counted in this report. The downward trend seen in recent months may be due to declines in availability of healthcare provider testing and increases in homebased testing with rapid antigen kits. Homebased tests are not reported to public health and are not included in these data.
- COVID-19-related hospitalizations were up slightly from the previous weeks at 2.5/100,000.
- COVID-19 transmission was <50/100,000 across all zip codes in Snohomish County.
- Case rates decreased amongst most age groups. A small increase was seen in the 20–29-year-old age group. Highest case-rates are amongst our 70+ population, which is due to higher rates of testing, and small population size.
- Case rates week to week were steady or decreased for most race/ethnicity groups. Small increases were seen in Hispanic/Latino/Latina/Latinx and Black/African American groups.
- There has been a slight increase in the number of cases associated with reported LTCF outbreaks in the past couple of weeks. There have been 7 new LTCF outbreak in the past month.

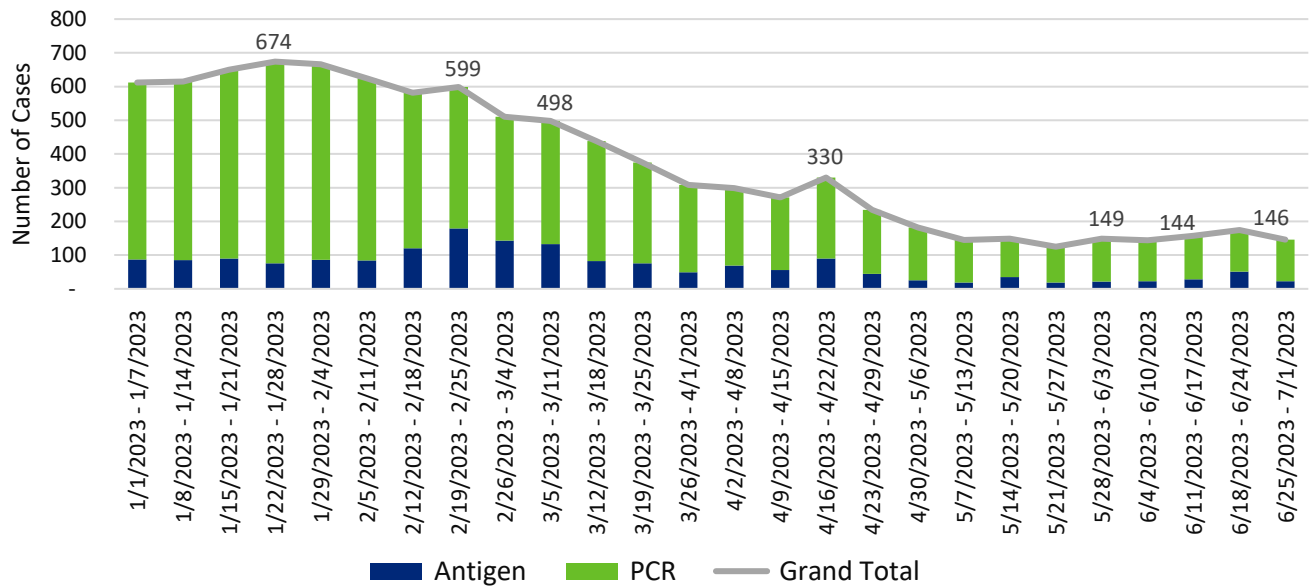
Snohomish County COVID-19 Weekly Case Rates per 100,000 by Symptom Onset Date



Weekly COVID-19 Graphs

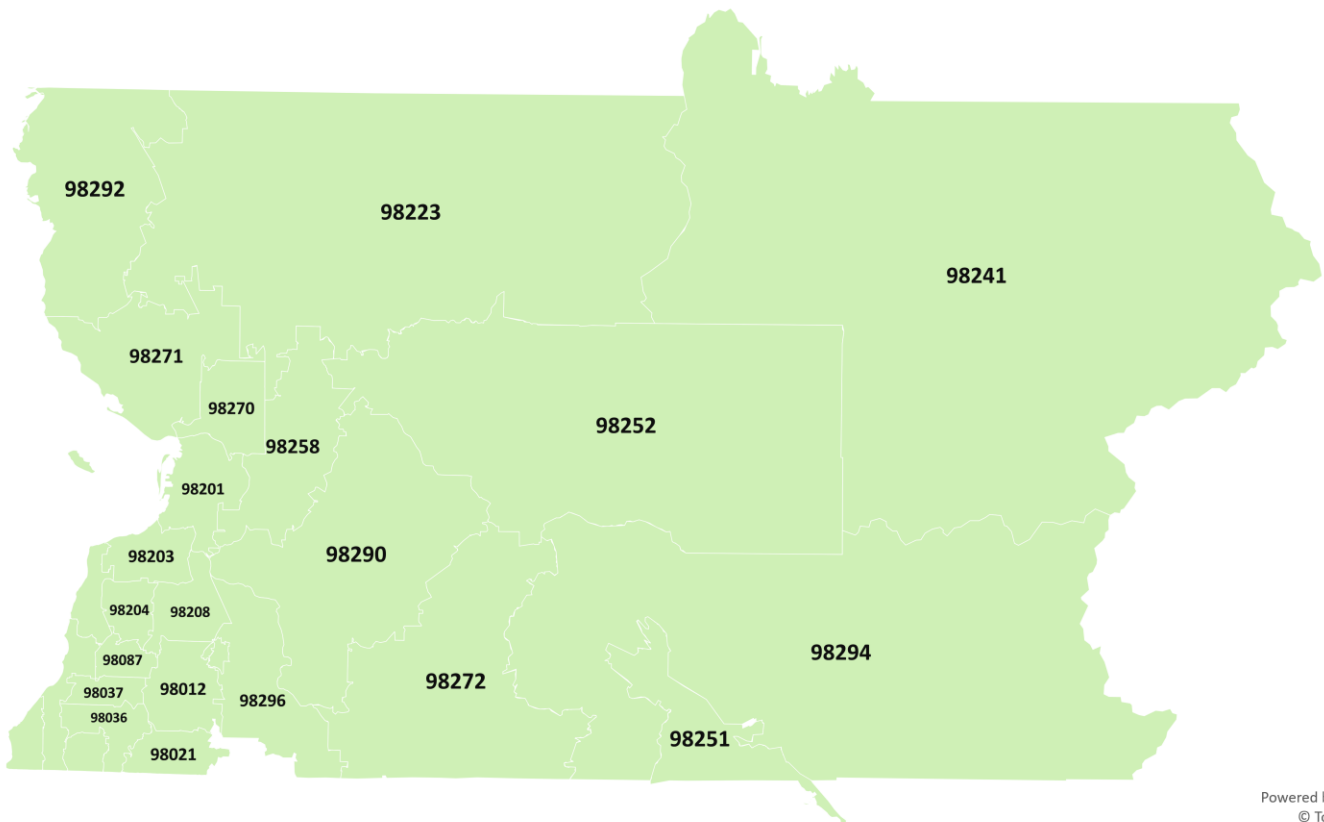
January 1 – July 1, 2023

Snohomish County COVID-19 Cases by Onset Date



Snohomish County COVID-19 Case Rates per 100,000 by Zip Code

June 25 - July 1, 2023



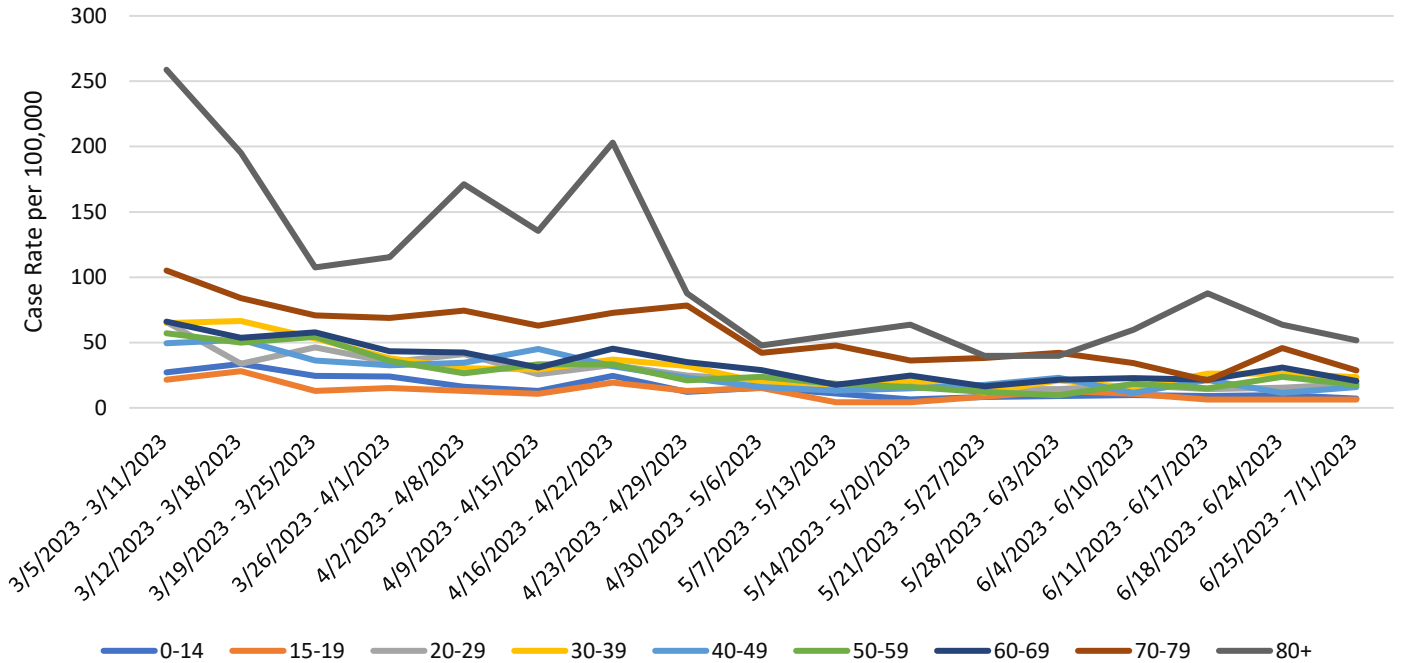
Powered by Bing
© TomTom

<50

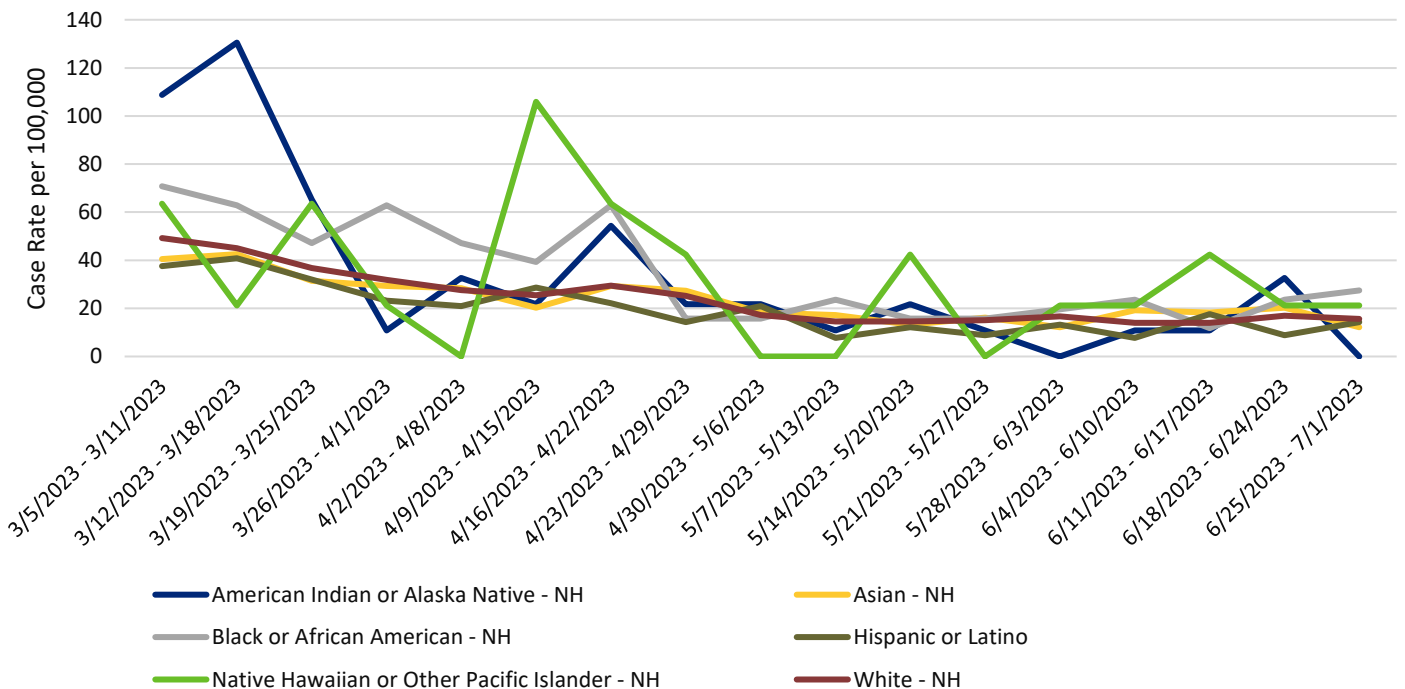
Weekly COVID-19 Graphs

January 1 – July 1, 2023

Snohomish County COVID-19 Case Rates per 100,000 by Illness Onset Date and Age Group



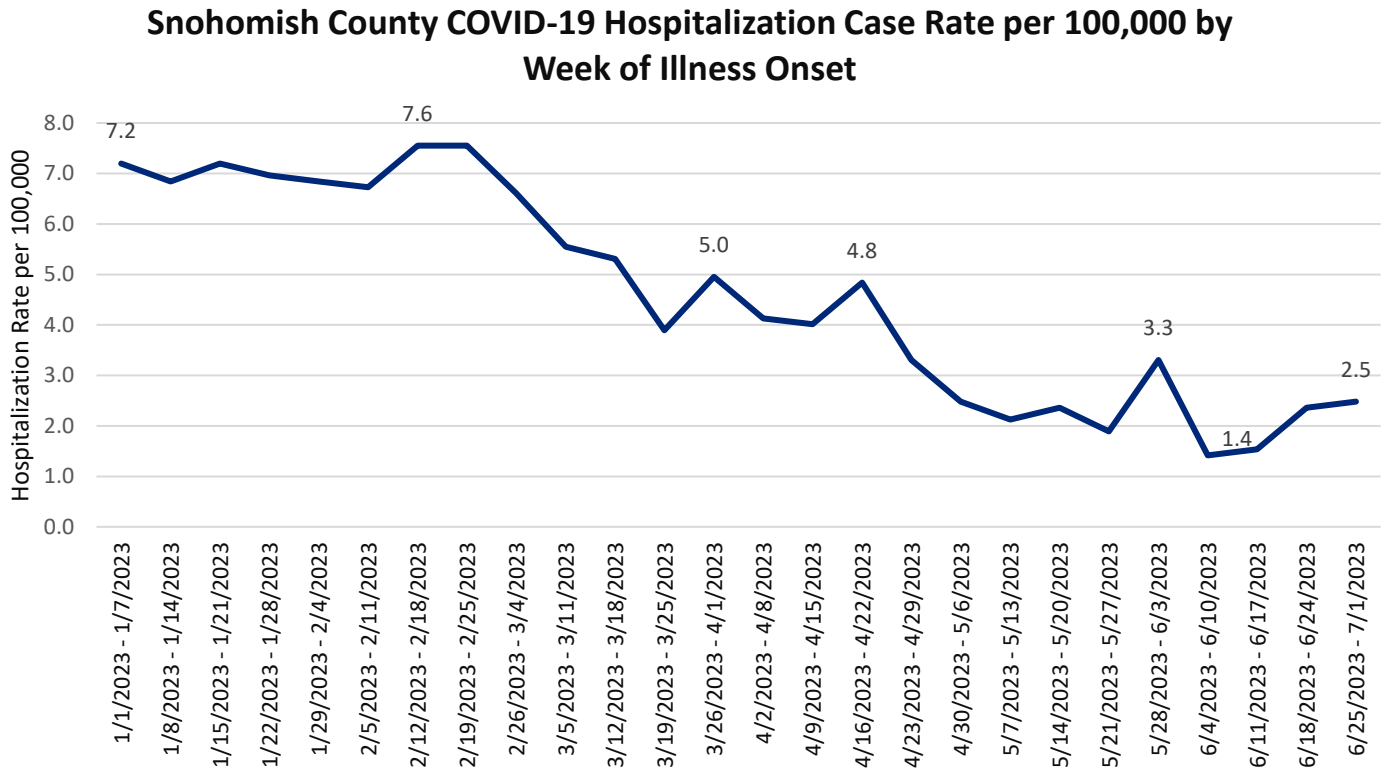
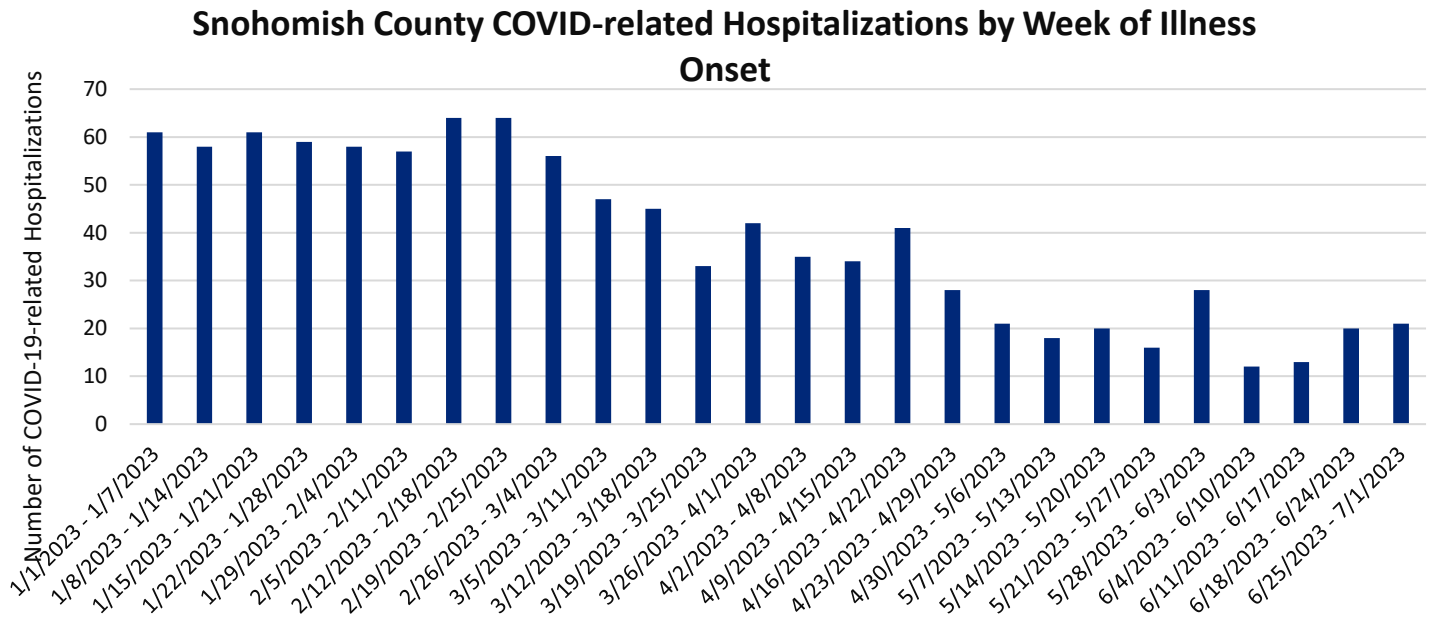
Snohomish County COVID-19 Case Rates per 100,000 by Illness Onset Date and Race/Ethnicity



Weekly COVID-19 Graphs

January 1 – July 1, 2023

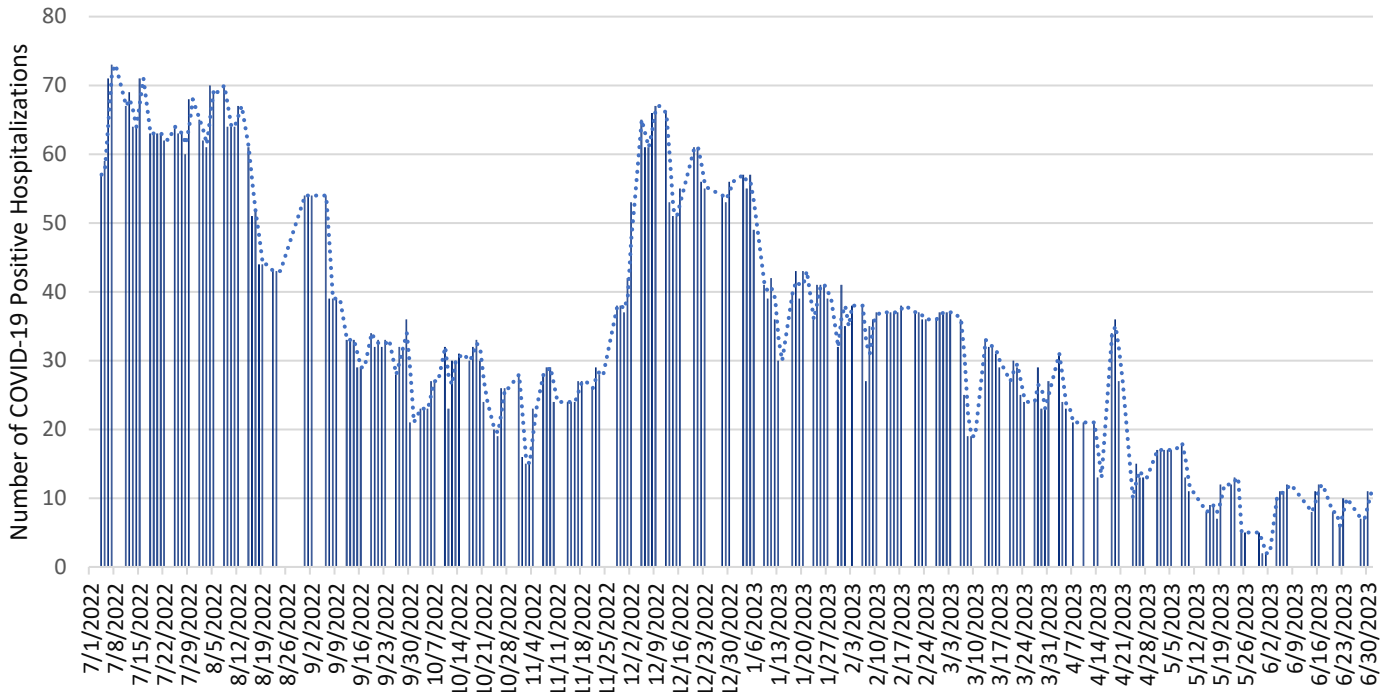
HOSPITALIZATIONS:



Weekly COVID-19 Graphs

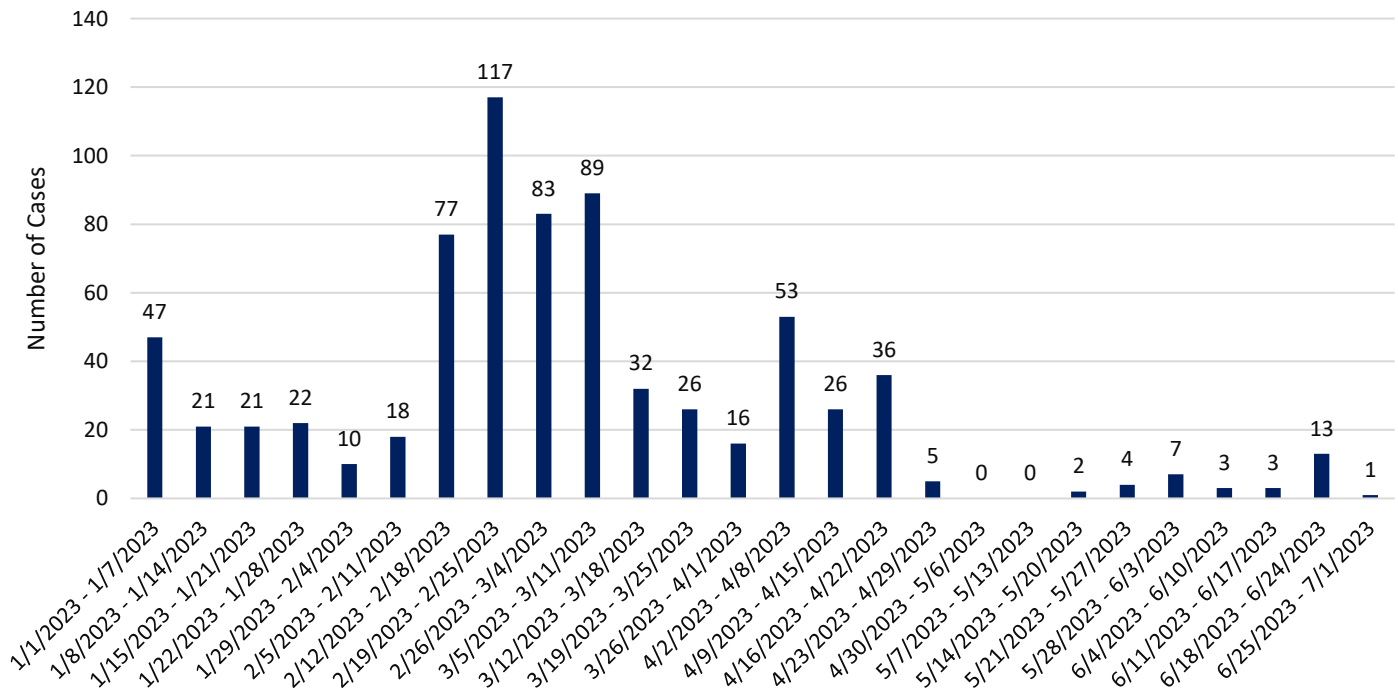
January 1 – July 1, 2023

Snohomish County Point-in-Time COVID-19 Hospital Census



*Data source: WA Health (wahealth.doh.wa.gov)

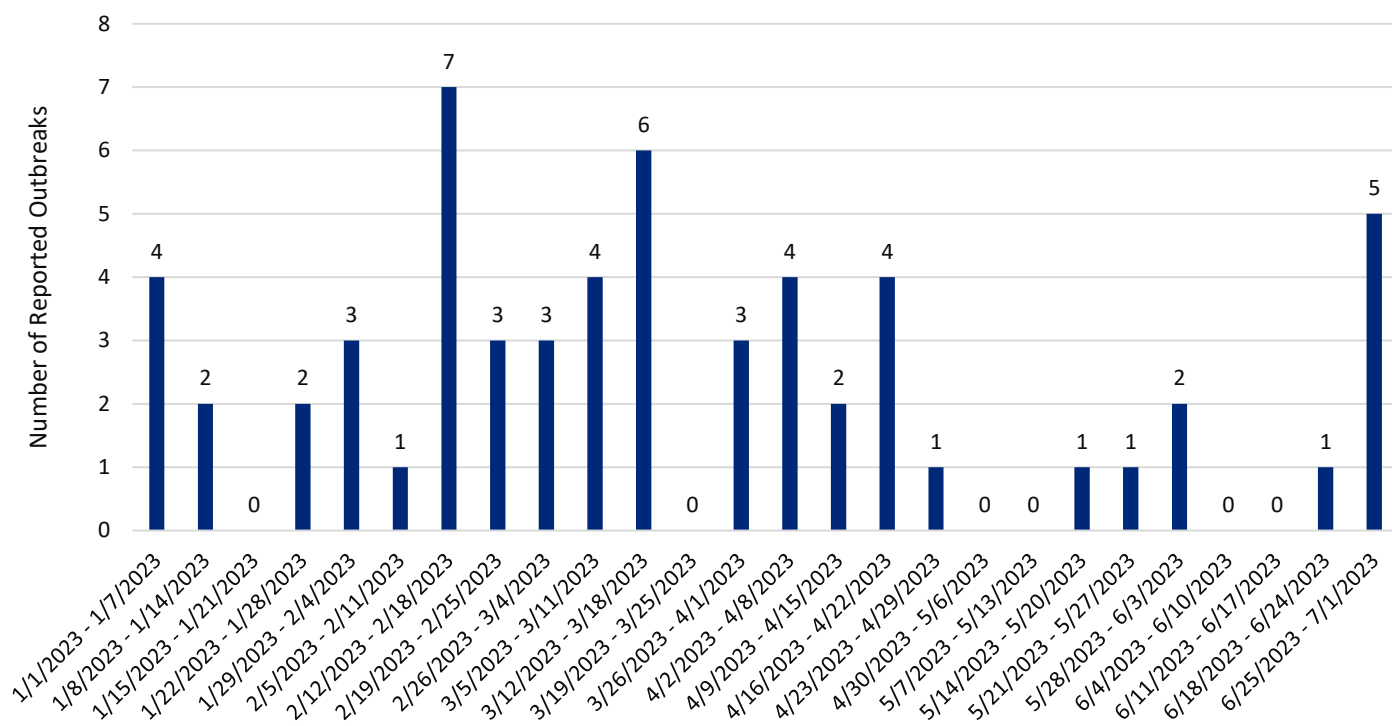
Snohomish County Long-term Care Facility Outbreak Associated COVID-19 Cases by Onset Date



Weekly COVID-19 Graphs

January 1 – July 1, 2023

Snohomish County Long-term Care Facility & Adult Family Home COVID-19 Outbreaks by Date of Outbreak Notification



New Cases (per 100,000 population in the last 7 days)	Indicators	Low	Medium	High
Fewer than 200 17	New COVID-19 admissions per 100,000 population (7-day total) 2.5	<10.0	10.0-19.9	≥20.0
	Percent of staffed inpatient beds occupied by COVID-19 patients (7-day average) 1%	<10.0%	10.0-14.9%	≥15%
200 or more	New COVID-19 admissions per 100,000 population (7-day total)	NA	<10.0	≥10.0
	Percent of staffed inpatient beds occupied by COVID-19 patients (7-day average)	NA	<10%	≥10.0%

Additional Resources:

- Washington State Department of Health COVID-19 Data Dashboard: <https://doh.wa.gov/emergencies/covid-19/data-dashboard>