

Weekly COVID-19 Graphs

June 5, 2022 – May 27, 2023

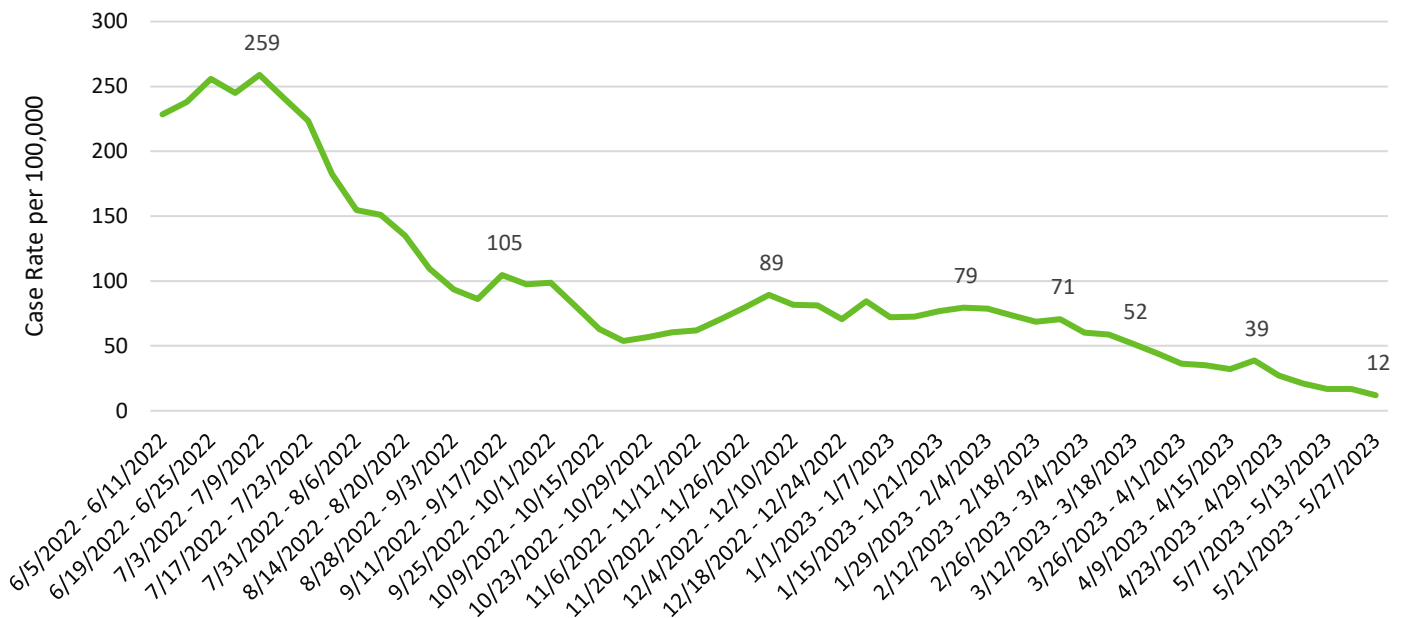
CASE DATA:

The Washington State Disease Reporting System (WDRS) is the data source for all case data. Some data have been suppressed due to inaccuracies. Not all tables and graphs will have the same denominator. All trend data are by symptom onset date or date of first positive COVID test. All data are preliminary and subject to change.

SNOHOMSH COUNTY SUMMARY:

- Snohomish County case rates continue to decline. Only cases tested by a healthcare provider or laboratory are counted in this report. The trend seen may be due to declines in availability of healthcare provider testing and increases in homebased testing with rapid antigen kits. Homebased tests are not reported to public health and are not included in these data.
- COVID-19-related hospitalizations were steady at 1.8/100,000.
- COVID-19 transmission was <50/100,000 across all zip codes in Snohomish County.
- Case rates decreased or were steady amongst most age groups. Small increases in case rates were seen amongst 15-19- and 70–79-year-old age groups. Highest case-rates are amongst our 70+ population, which is due to higher rates of testing, and small population size.
- We saw decreases in cases week to week for all race/ethnicity groups.
- There were minimal cases associated with reported LTCF outbreaks in the past few weeks. There have been 2 new LTCF outbreak for the past month.

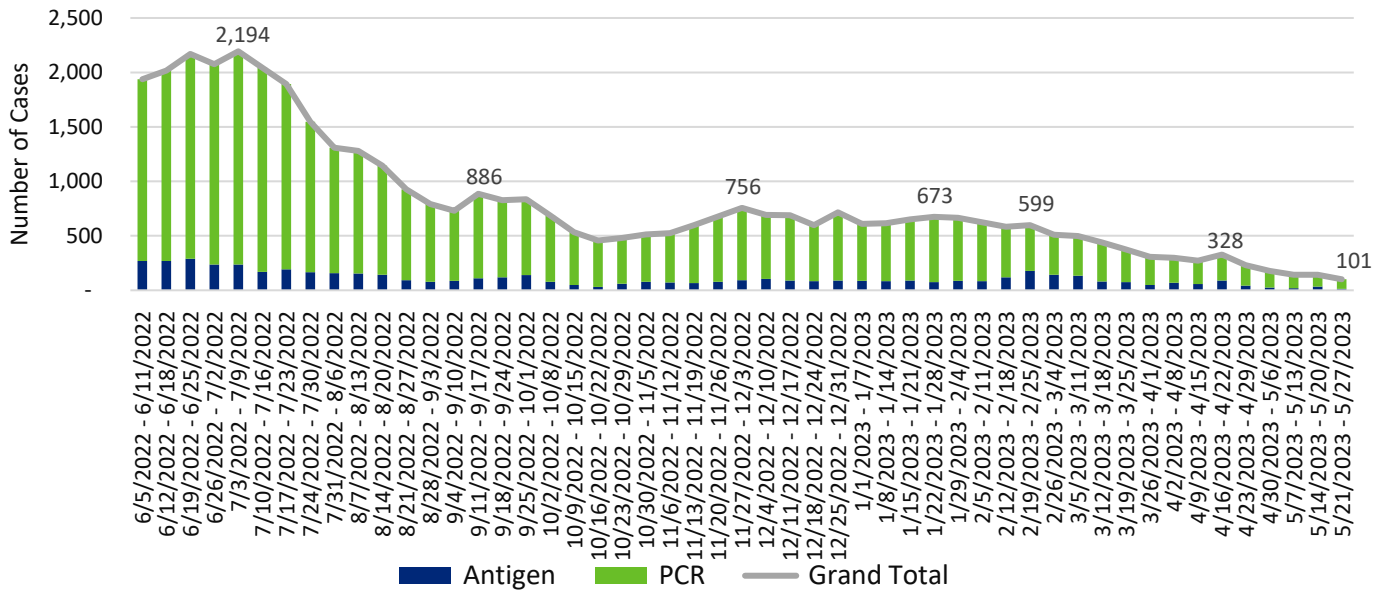
Snohomish County COVID-19 Weekly Case Rates per 100,000 by Symptom Onset Date



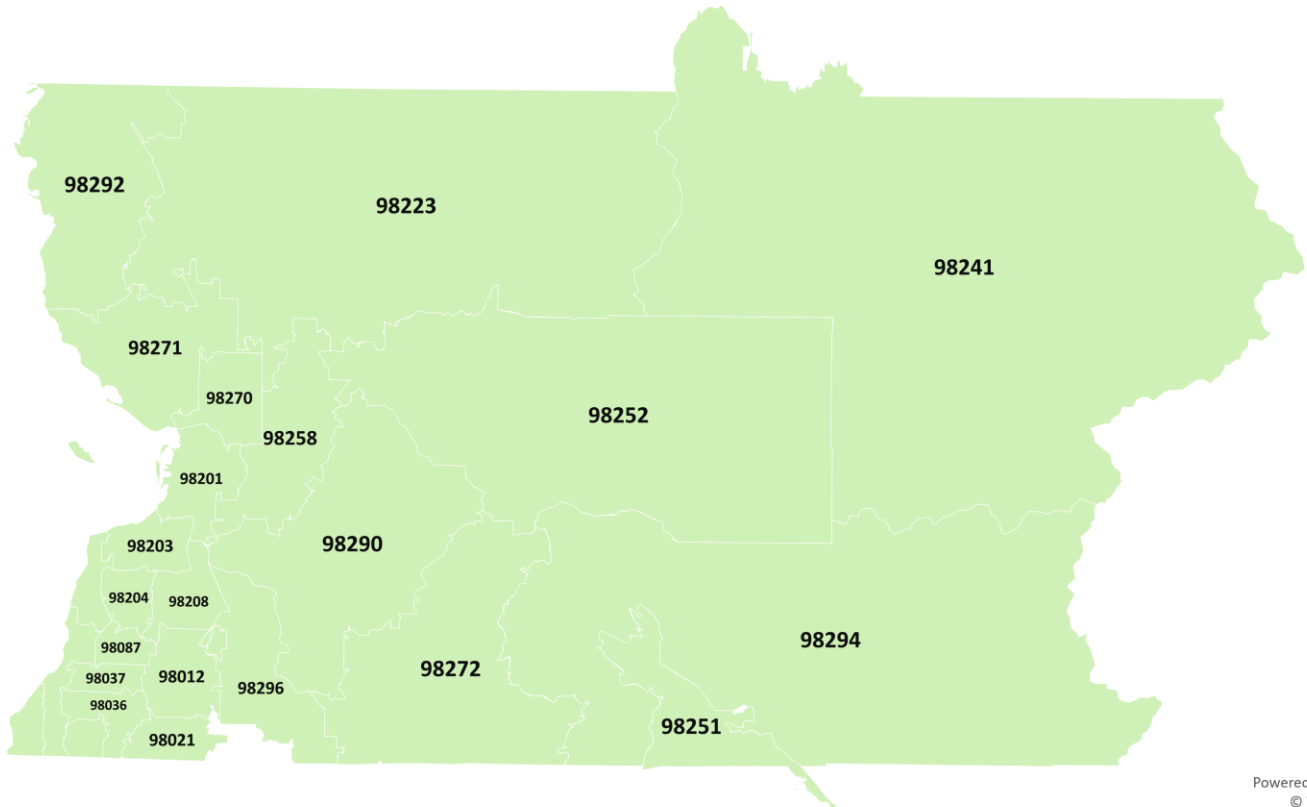
Weekly COVID-19 Graphs

June 5, 2022 – May 27, 2023

Snohomish County COVID-19 Cases by Onset Date



Snohomish County COVID-19 Case Rates per 100,000 by Zip Code May 21-27, 2023



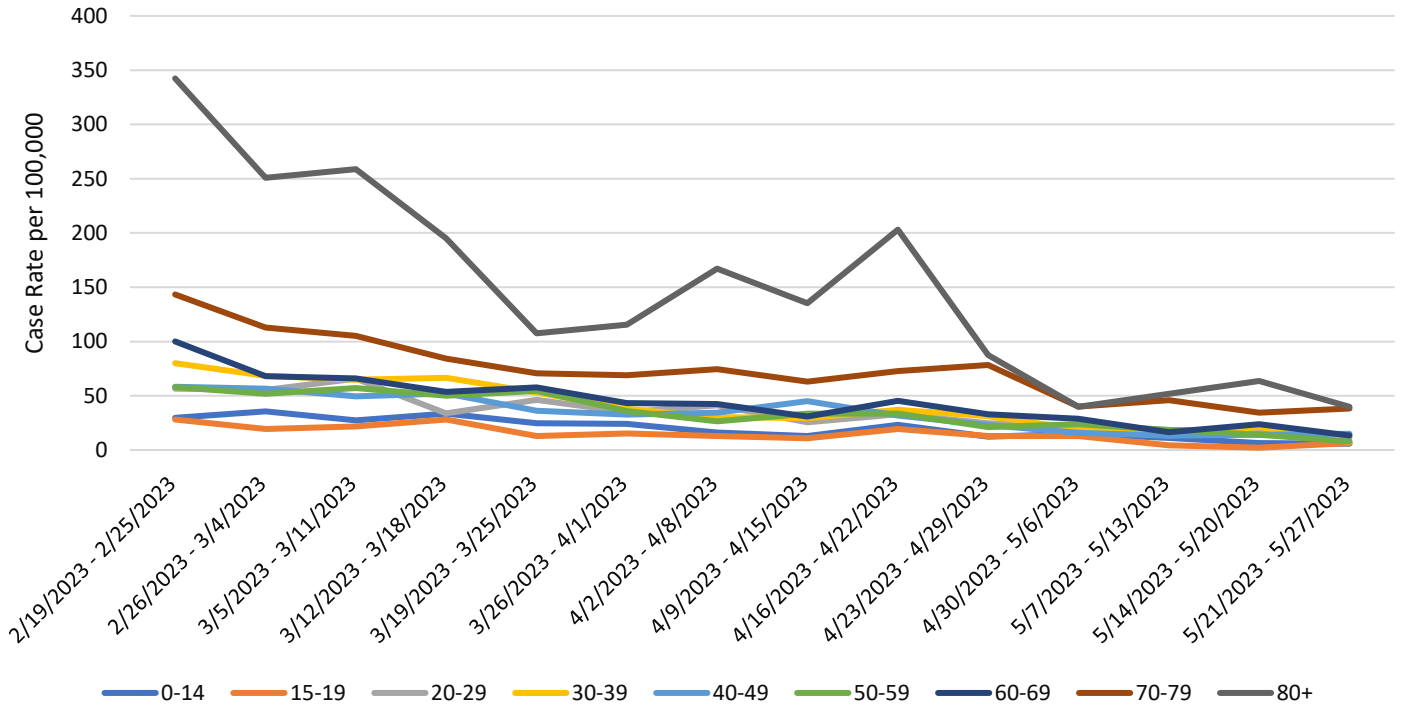
Powered by Bing
© TomTom

<50

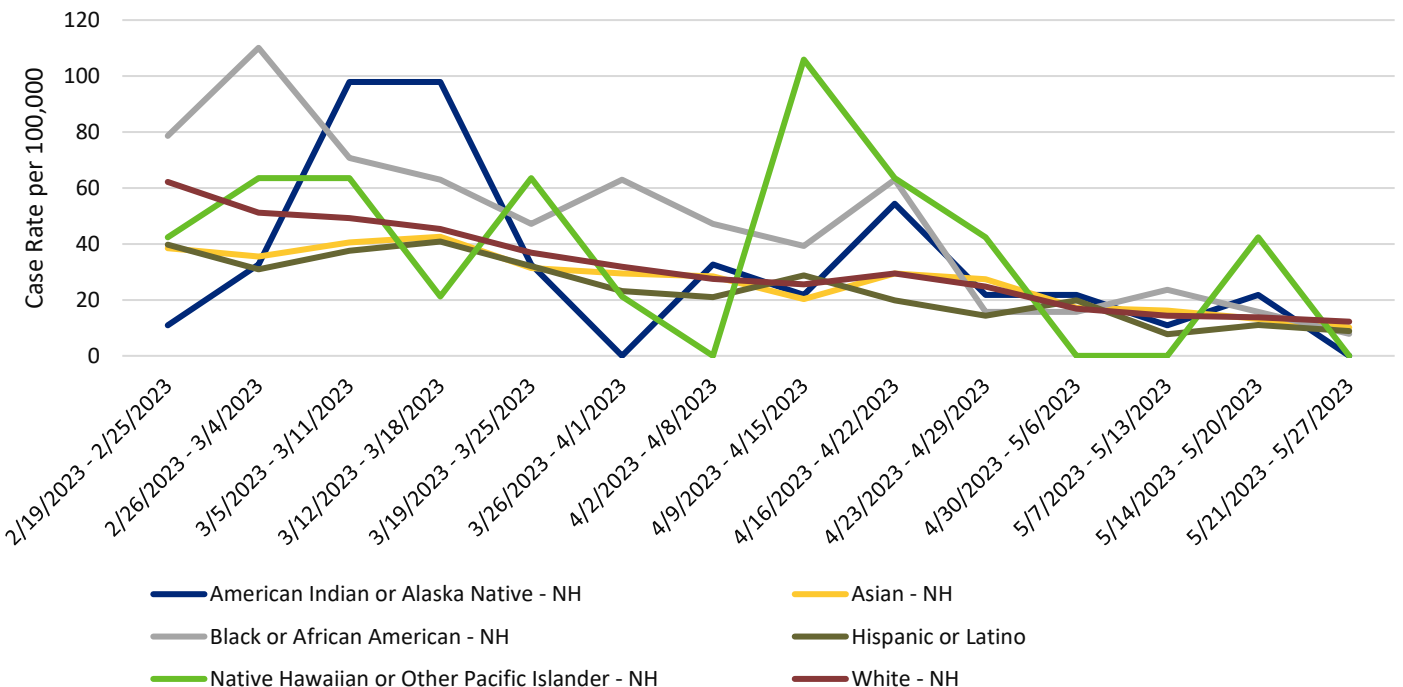
Weekly COVID-19 Graphs

June 5, 2022 – May 27, 2023

Snohomish County COVID-19 Case Rates per 100,000 by Illness Onset Date and Age Group



Snohomish County COVID-19 Case Rates per 100,000 by Illness Onset Date and Race/Ethnicity

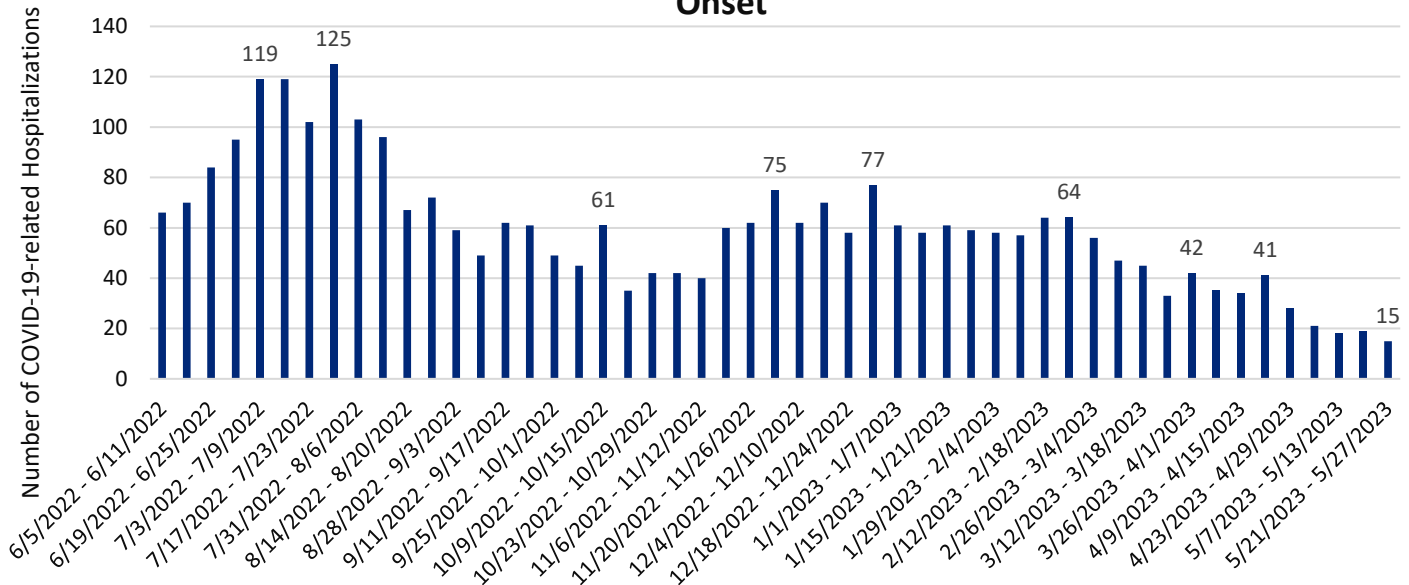


Weekly COVID-19 Graphs

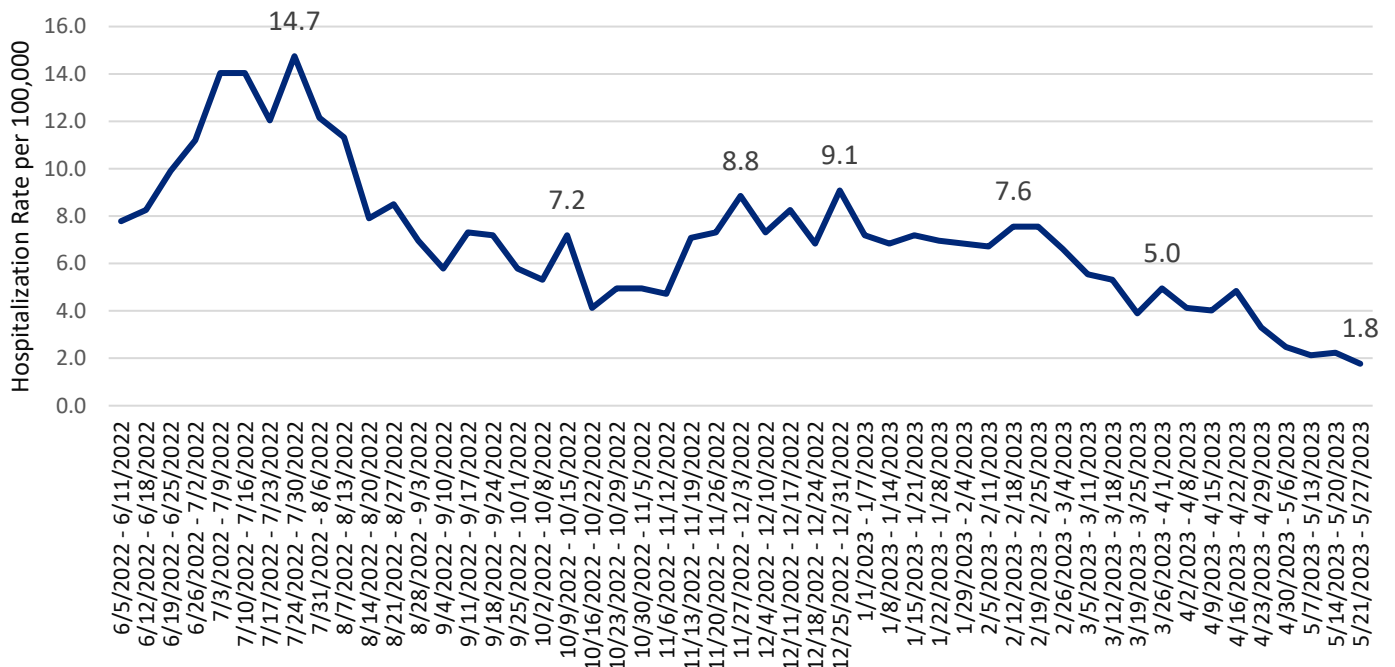
June 5, 2022 – May 27, 2023

HOSPITALIZATIONS:

Snohomish County COVID-related Hospitalizations by Week of Illness Onset



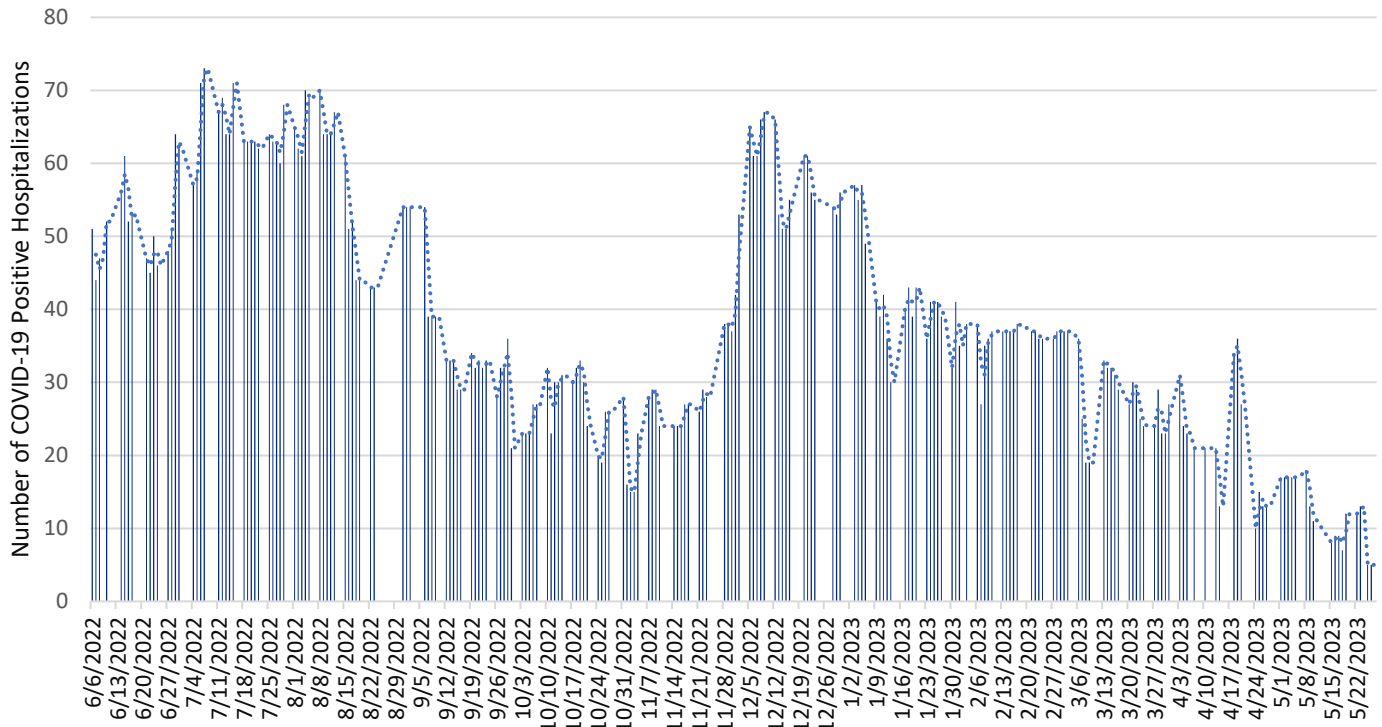
Snohomish County COVID-19 Hospitalization Case Rate per 100,000 by Week of Illness Onset



Weekly COVID-19 Graphs

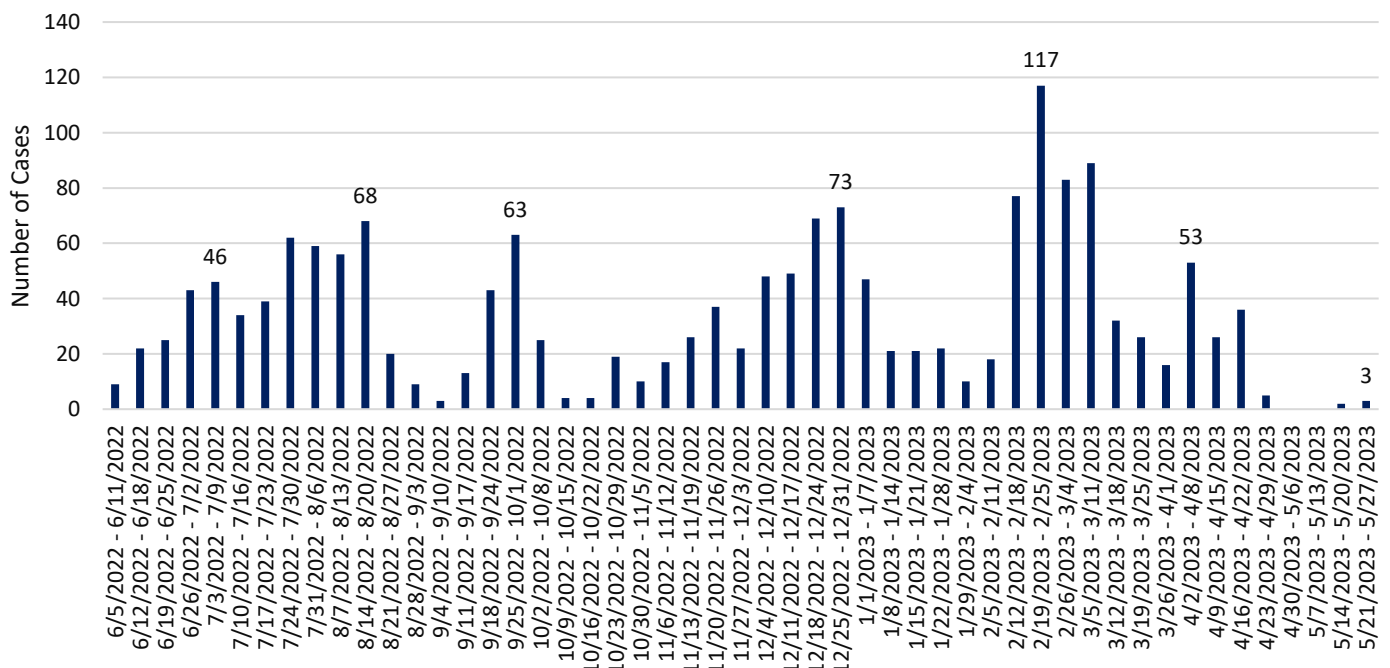
June 5, 2022 – May 27, 2023

Snohomish County Point-in-Time COVID-19 Hospital Census



*Data source: WA Health (wahealth.doh.wa.gov)

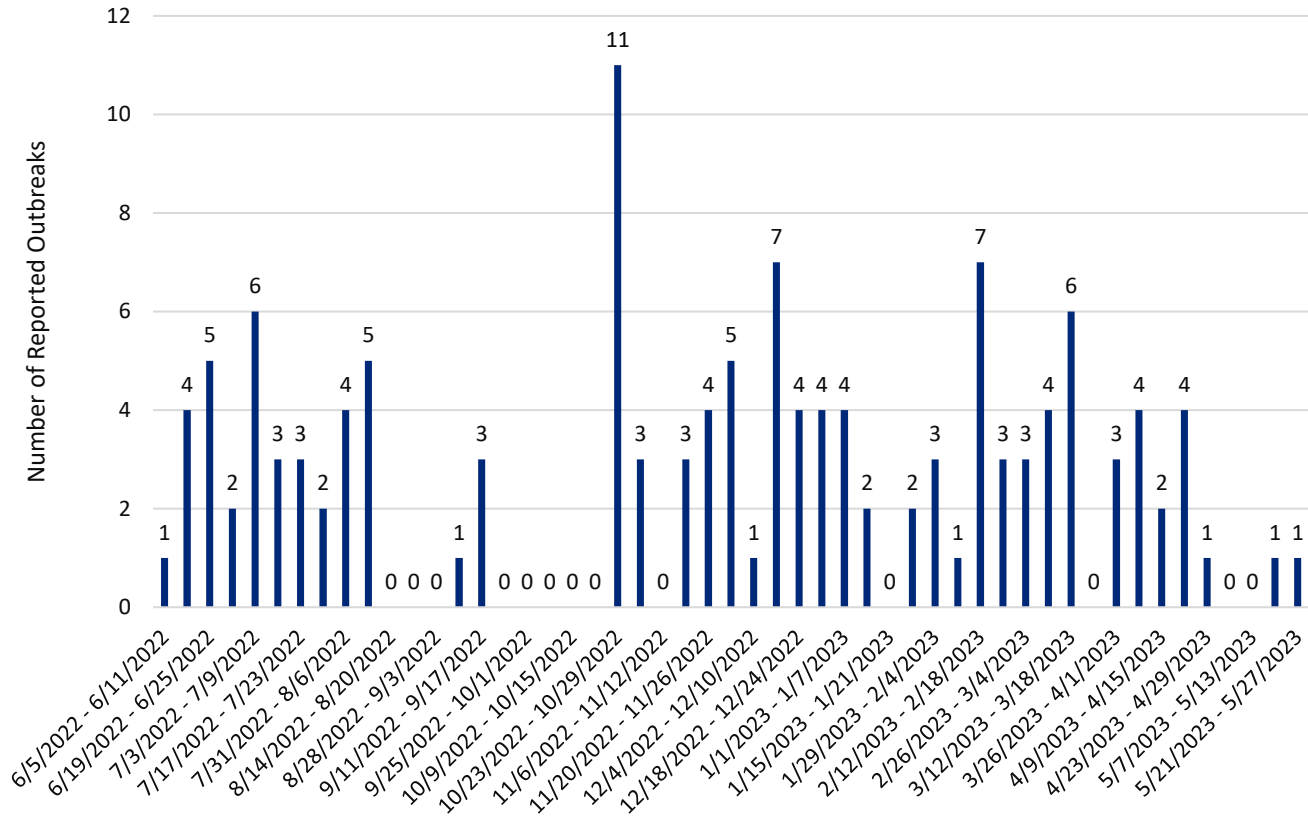
Snohomish County Long-term Care Facility Outbreak Associated COVID-19 Cases by Onset Date



Weekly COVID-19 Graphs

June 5, 2022 – May 27, 2023

Snohomish County Long-term Care Facility & Adult Family Home COVID-19 Outbreaks by Date of Outbreak Notification



New Cases (per 100,000 population in the last 7 days)	Indicators	Low	Medium	High
Fewer than 200 12	New COVID-19 admissions per 100,000 population (7-day total) 1.8	<10.0	10.0-19.9	≥20.0
	Percent of staffed inpatient beds occupied by COVID-19 patients (7-day average) 1%	<10.0%	10.0-14.9%	≥15%
200 or more	New COVID-19 admissions per 100,000 population (7-day total)	NA	<10.0	≥10.0
	Percent of staffed inpatient beds occupied by COVID-19 patients (7-day average)	NA	<10%	≥10.0%

Additional Resources:

- Washington State Department of Health COVID-19 Data Dashboard: <https://doh.wa.gov/emergencies/covid-19/data-dashboard>