

Weekly COVID-19 Graphs

June 5, 2022 – May 20, 2023

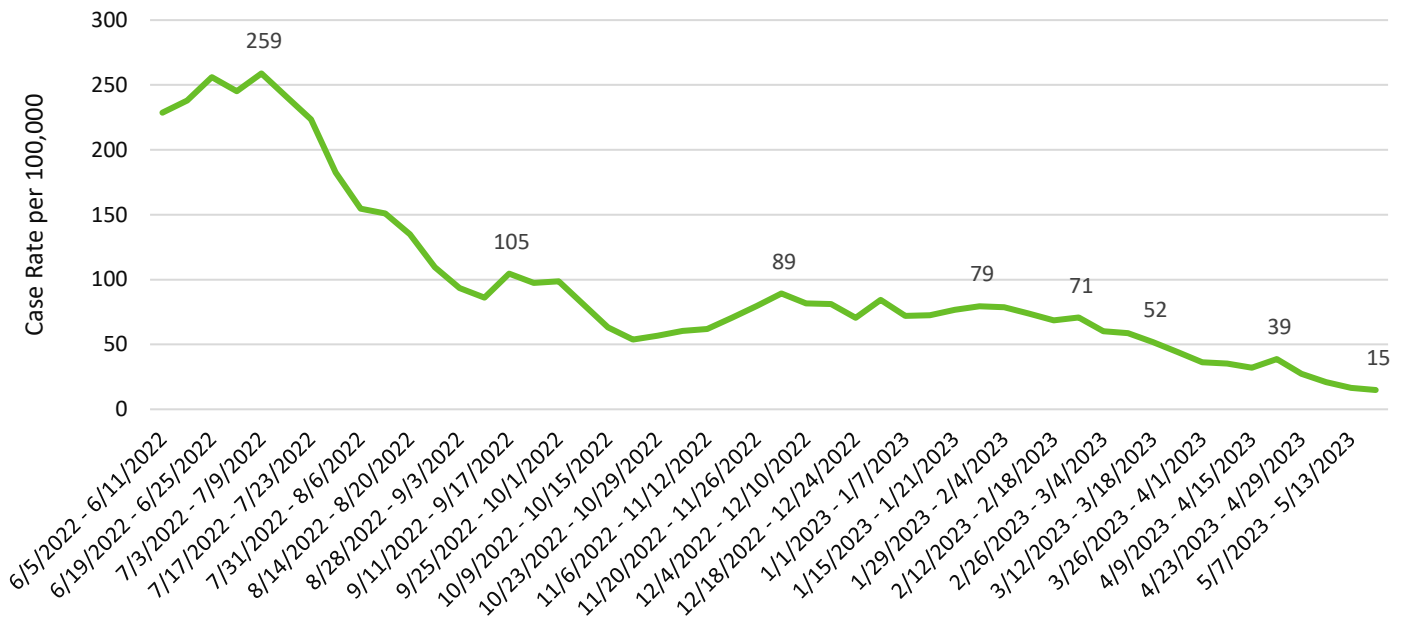
CASE DATA:

The Washington State Disease Reporting System (WDRS) is the data source for all case data. Some data have been suppressed due to inaccuracies. Not all tables and graphs will have the same denominator. All trend data are by symptom onset date or date of first positive COVID test. All data are preliminary and subject to change.

SNOHOMSH COUNTY SUMMARY:

- Snohomish County is currently in the low-risk transmission category.
- The Snohomish County COVID-19 case rate decreased this last week.
- COVID-19-related hospitalizations increased slightly to 2.0/100,000.
- COVID-19 transmission was <50/100,000 across all zip codes in Snohomish County, except for in the Lynnwood area.
- Case rates decreased amongst most age groups. Small increases in case rates were seen amongst 30-39, 60-69 and 80+ year-old age groups. Highest case-rates are amongst our 70+ population, which is due to higher rates of testing, and small population size.
- We saw decreases in cases week to week for most race/ethnicity groups except for American Indian/Alaska Native, Hispanic, and Native Hawaiian/Pacific Islander which saw a slight increase.
- There have been no cases associated with reported LTCF outbreaks in the past three weeks. There have been no new LTCF outbreak for the past three weeks.

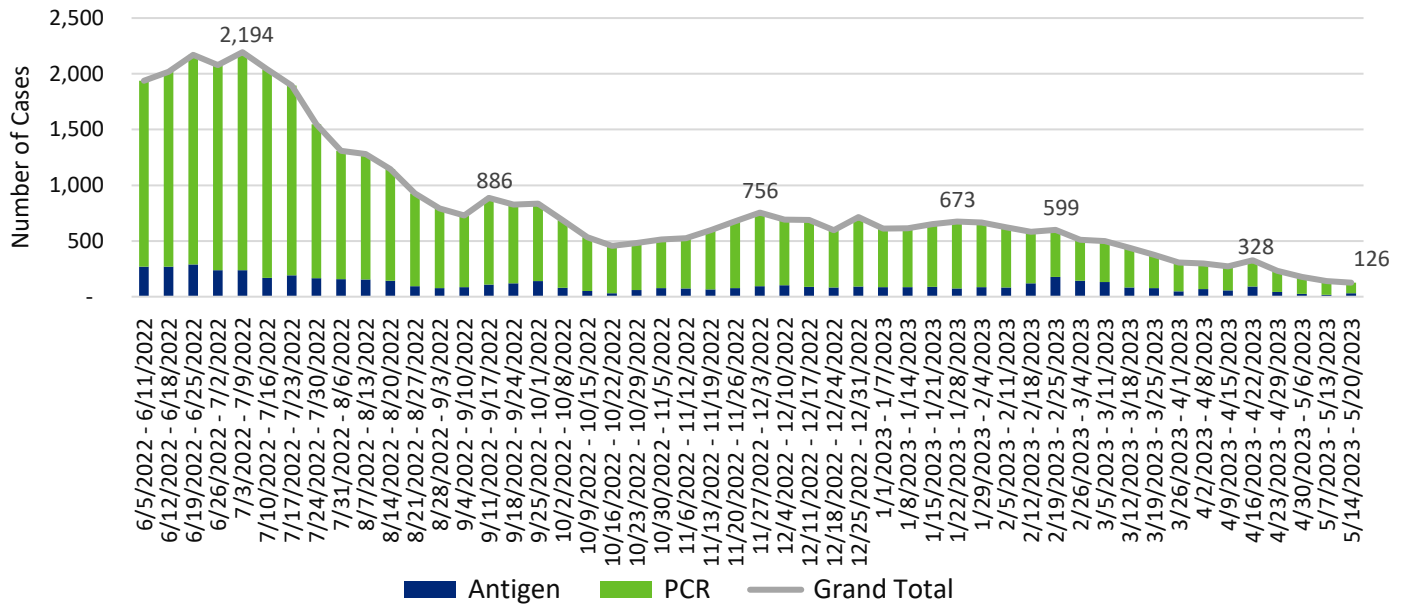
Snohomish County COVID-19 Weekly Case Rates per 100,000 by Symptom Onset Date



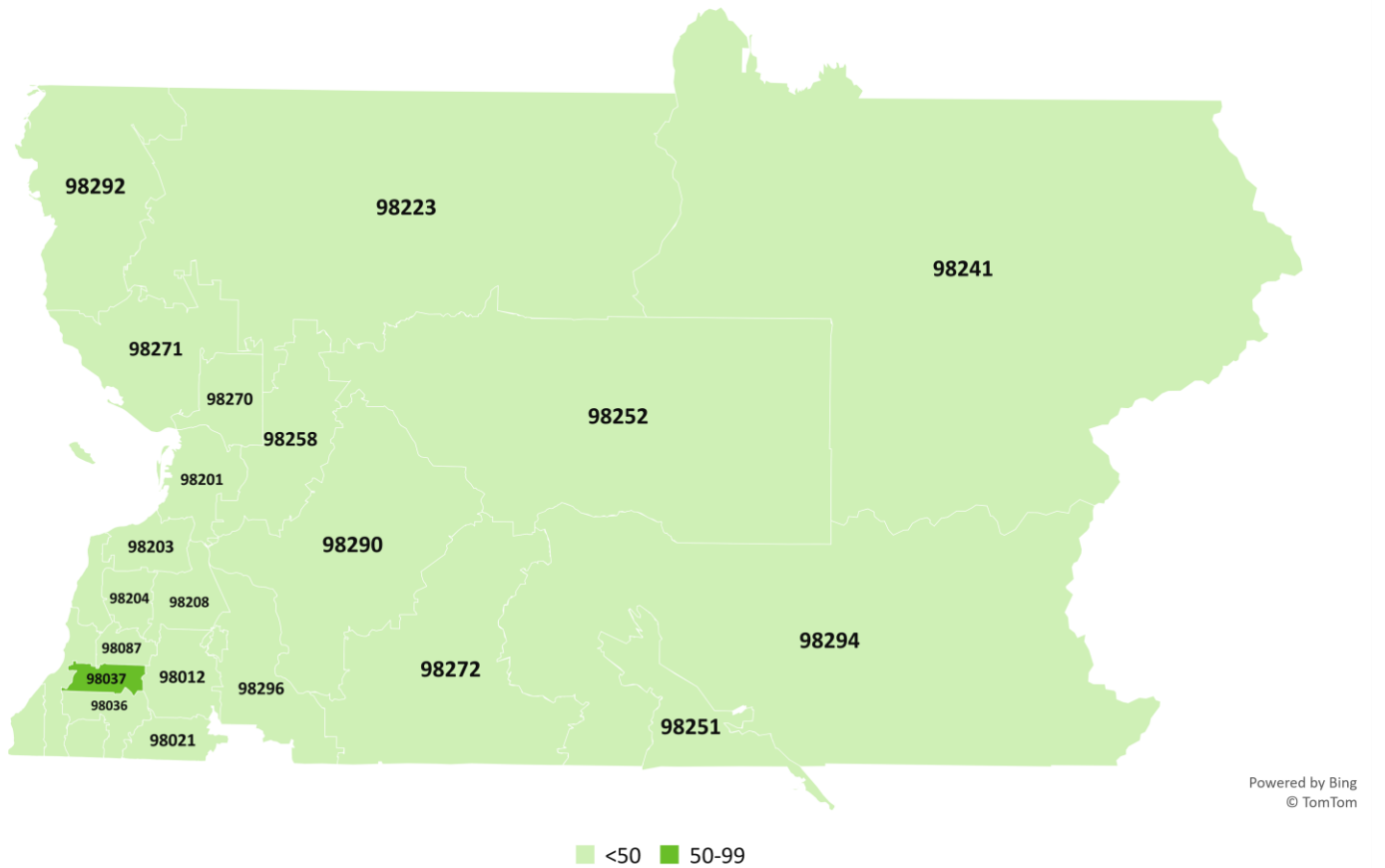
Weekly COVID-19 Graphs

June 5, 2022 – May 20, 2023

Snohomish County COVID-19 Cases by Onset Date



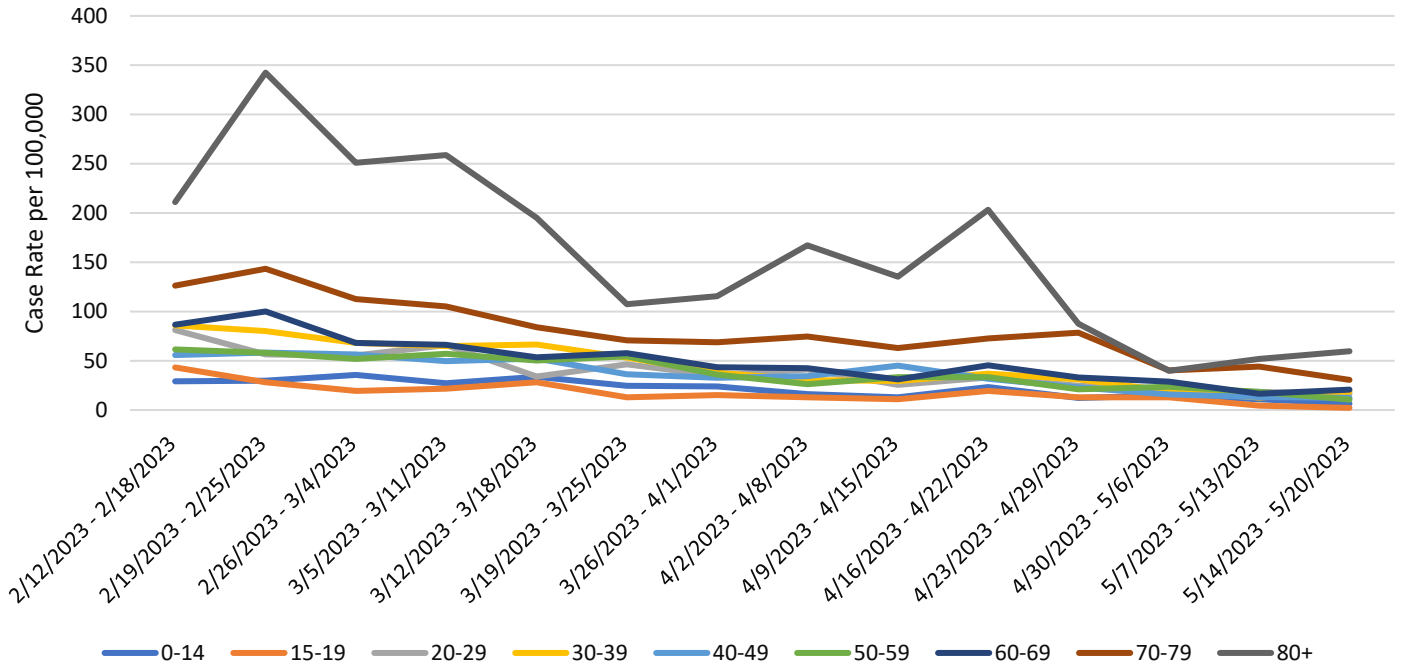
Snohomish County COVID-19 Case Rates per 100,000 by Zip Code May 14-20, 2023



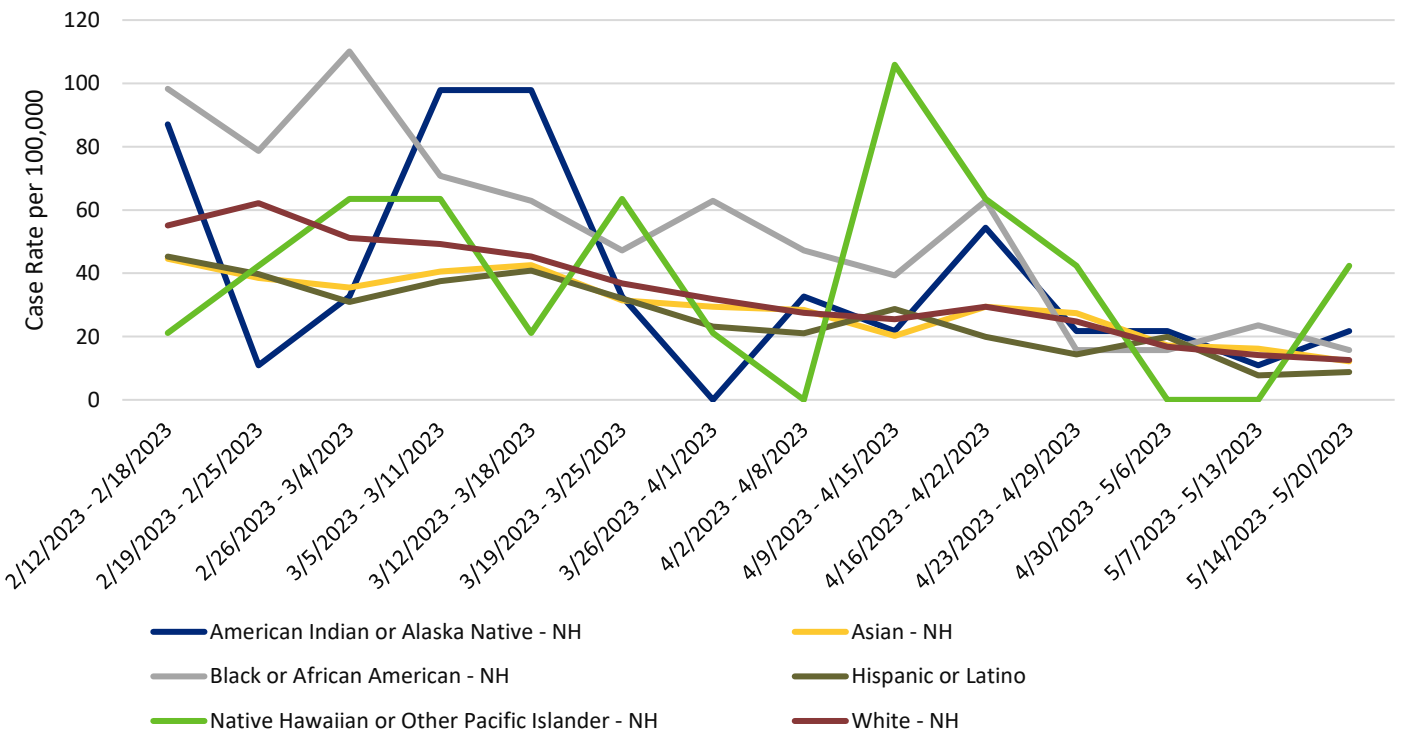
Weekly COVID-19 Graphs

June 5, 2022 – May 20, 2023

Snohomish County COVID-19 Case Rates per 100,000 by Illness Onset Date and Age Group



Snohomish County COVID-19 Case Rates per 100,000 by Illness Onset Date and Race/Ethnicity

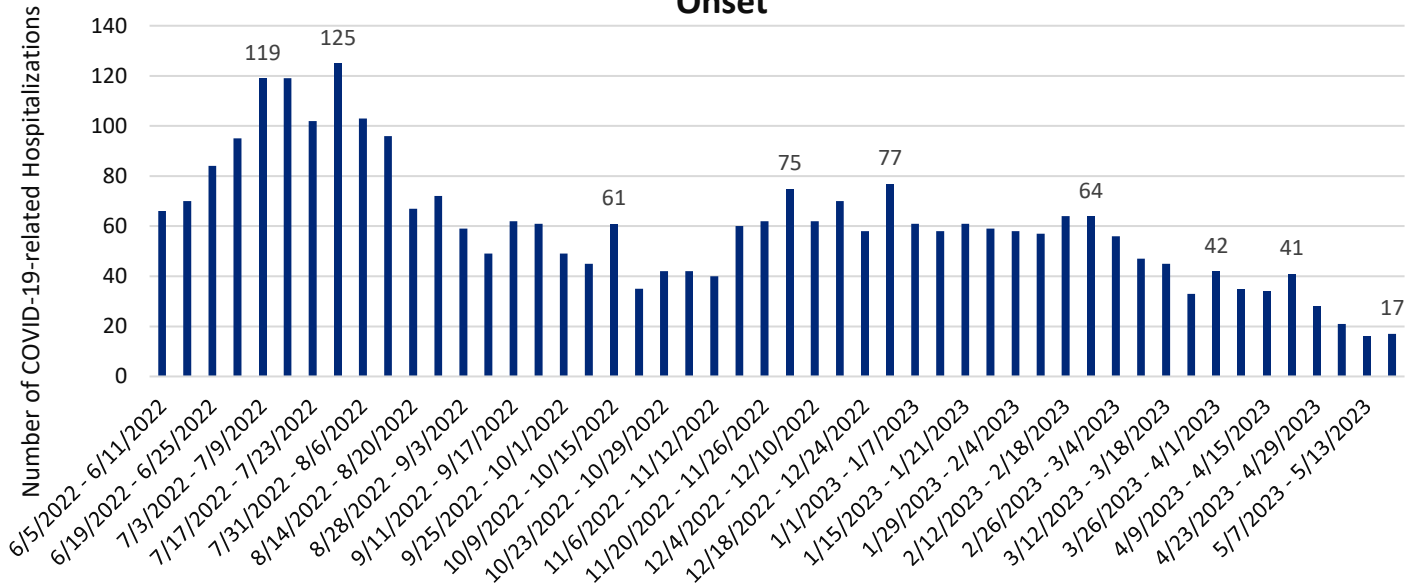


Weekly COVID-19 Graphs

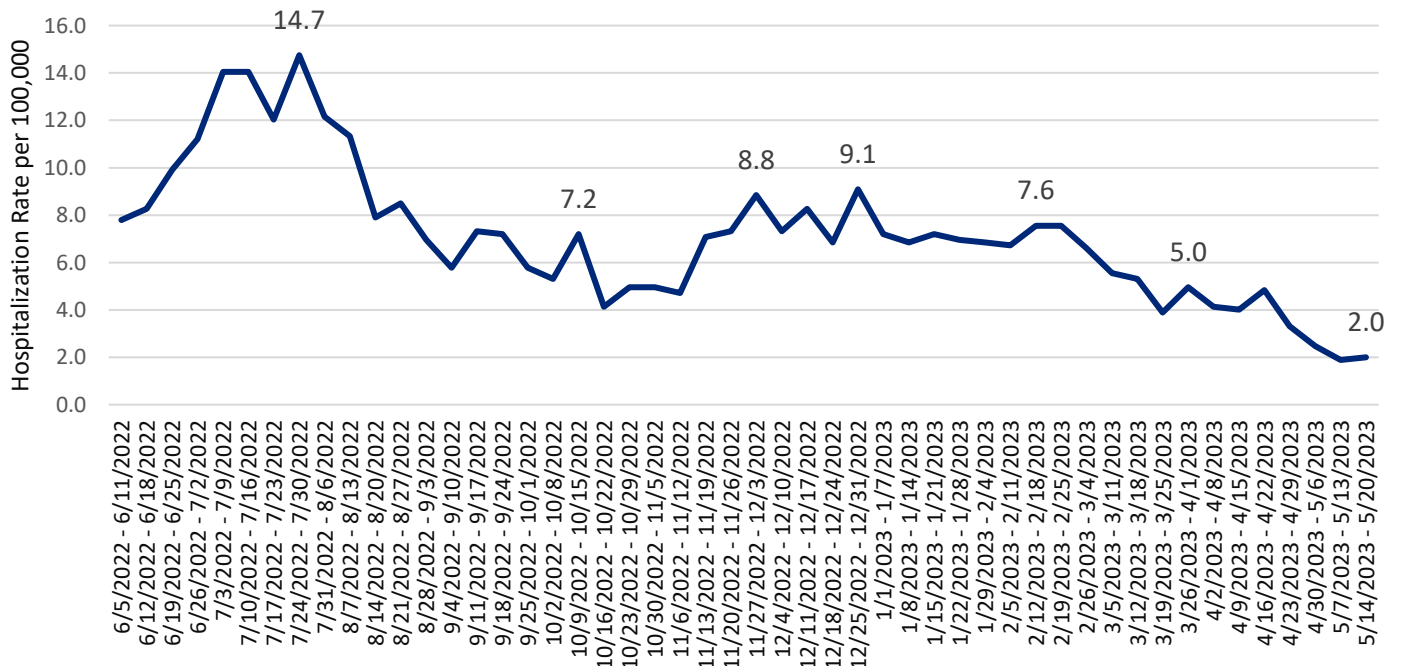
June 5, 2022 – May 20, 2023

HOSPITALIZATIONS:

Snohomish County COVID-related Hospitalizations by Week of Illness Onset



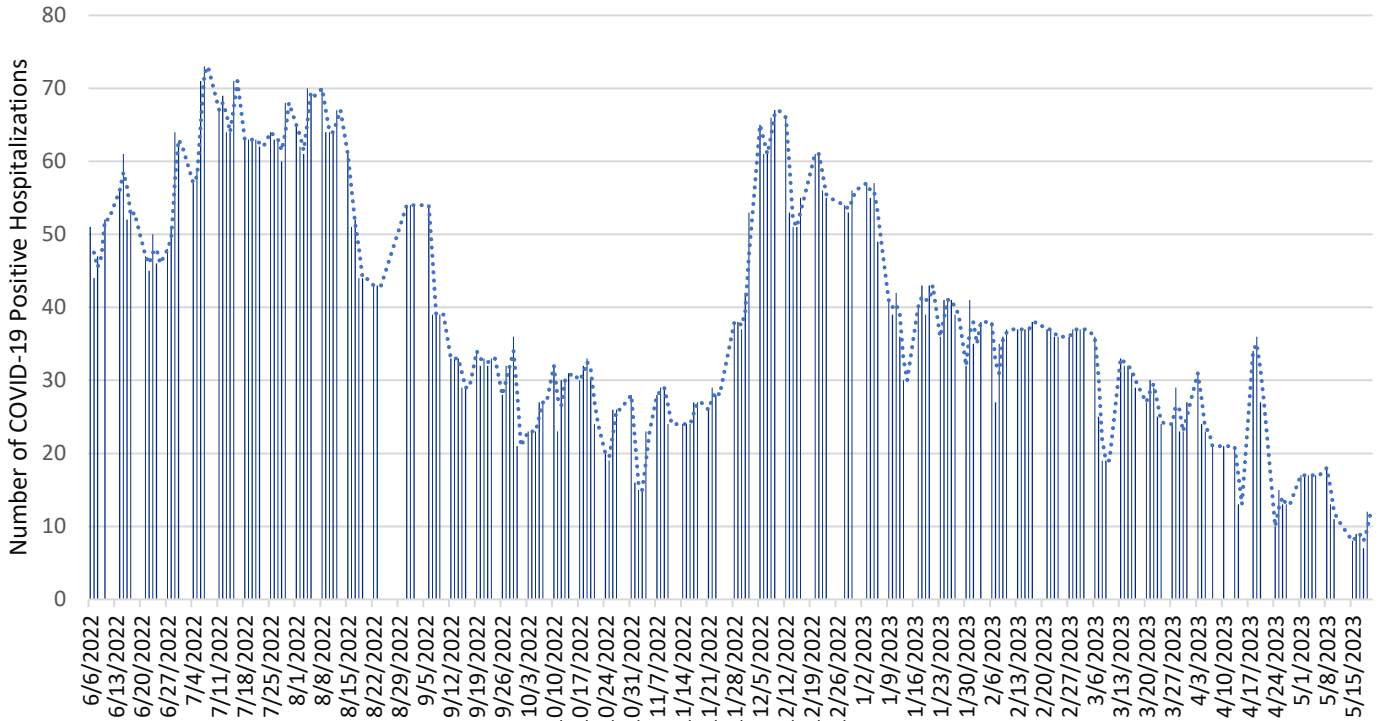
Snohomish County COVID-19 Hospitalization Case Rate per 100,000 by Week of Illness Onset



Weekly COVID-19 Graphs

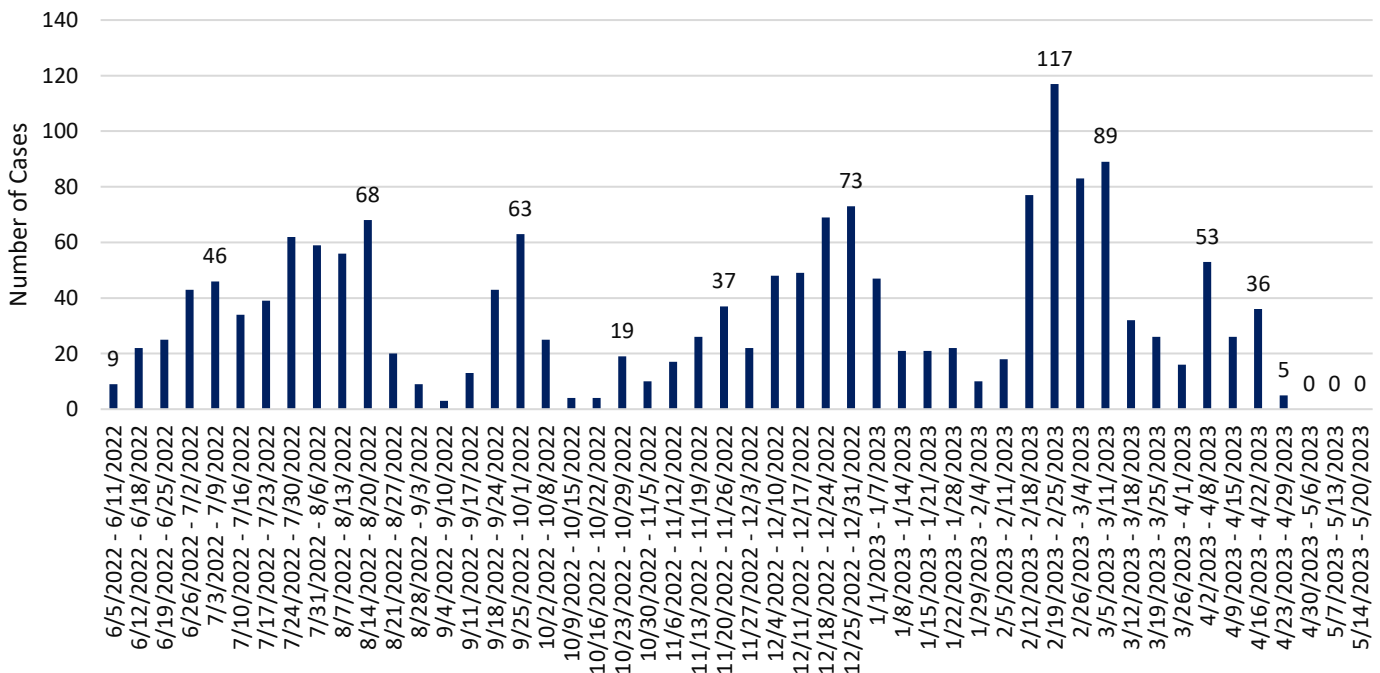
June 5, 2022 – May 20, 2023

Snohomish County Point-in-Time COVID-19 Hospital Census



*Data source: WA Health (wahealth.doh.wa.gov)

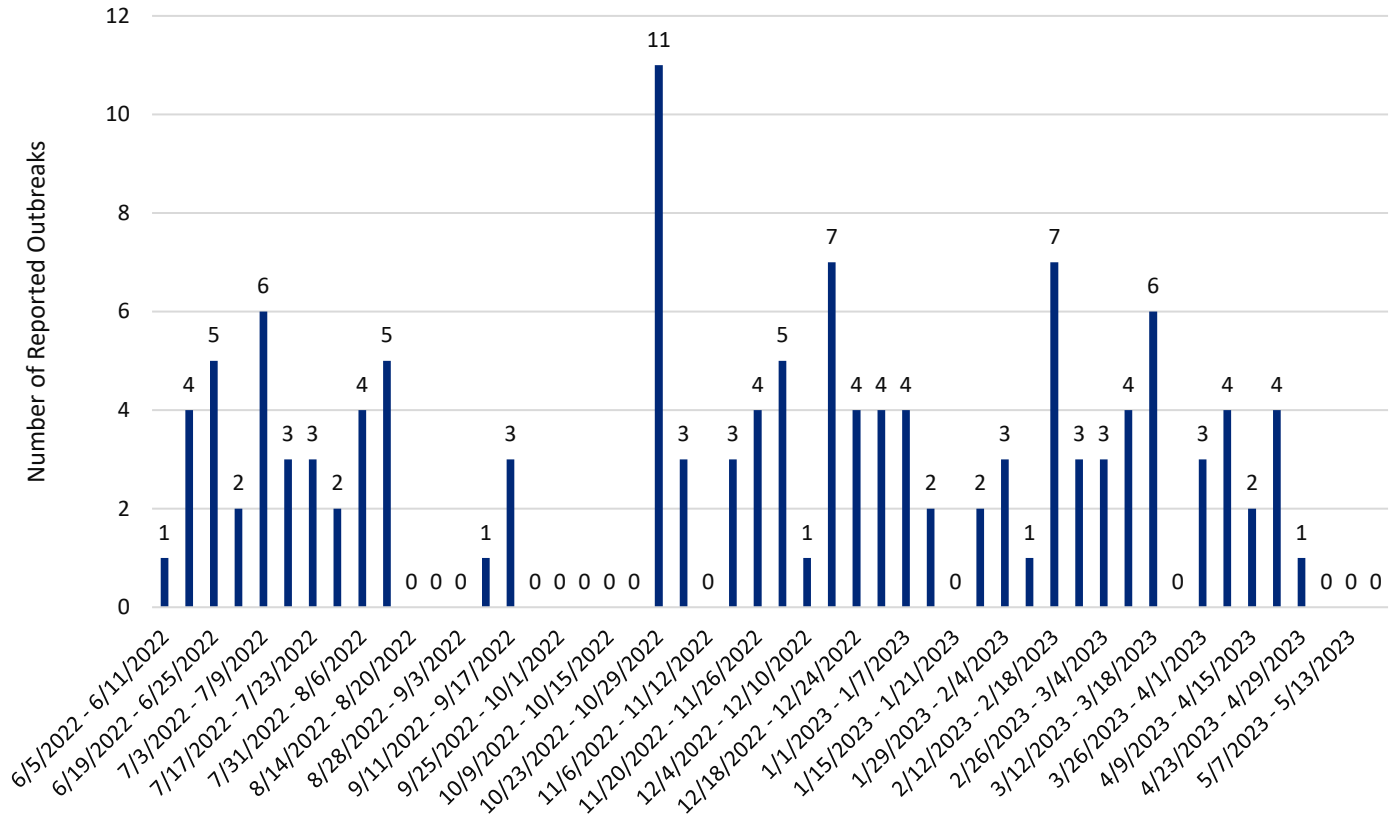
Snohomish County Long-term Care Facility Outbreak Associated COVID-19 Cases by Onset Date



Weekly COVID-19 Graphs

June 5, 2022 – May 20, 2023

Snohomish County Long-term Care Facility & Adult Family Home COVID-19 Outbreaks by Date of Outbreak Notification



New Cases (per 100,000 population in the last 7 days)	Indicators	Low	Medium	High
Fewer than 200 15	New COVID-19 admissions per 100,000 population (7-day total) 2.0	<10.0	10.0-19.9	≥20.0
	Percent of staffed inpatient beds occupied by COVID-19 patients (7-day average) 1%	<10.0%	10.0-14.9%	≥15%
200 or more	New COVID-19 admissions per 100,000 population (7-day total)	NA	<10.0	≥10.0
	Percent of staffed inpatient beds occupied by COVID-19 patients (7-day average)	NA	<10%	≥10.0%

Additional Resources:

- Washington State Department of Health COVID-19 Data Dashboard: <https://doh.wa.gov/emergencies/covid-19/data-dashboard>