

Weekly COVID-19 Graphs

June 5, 2022 – March 25, 2023

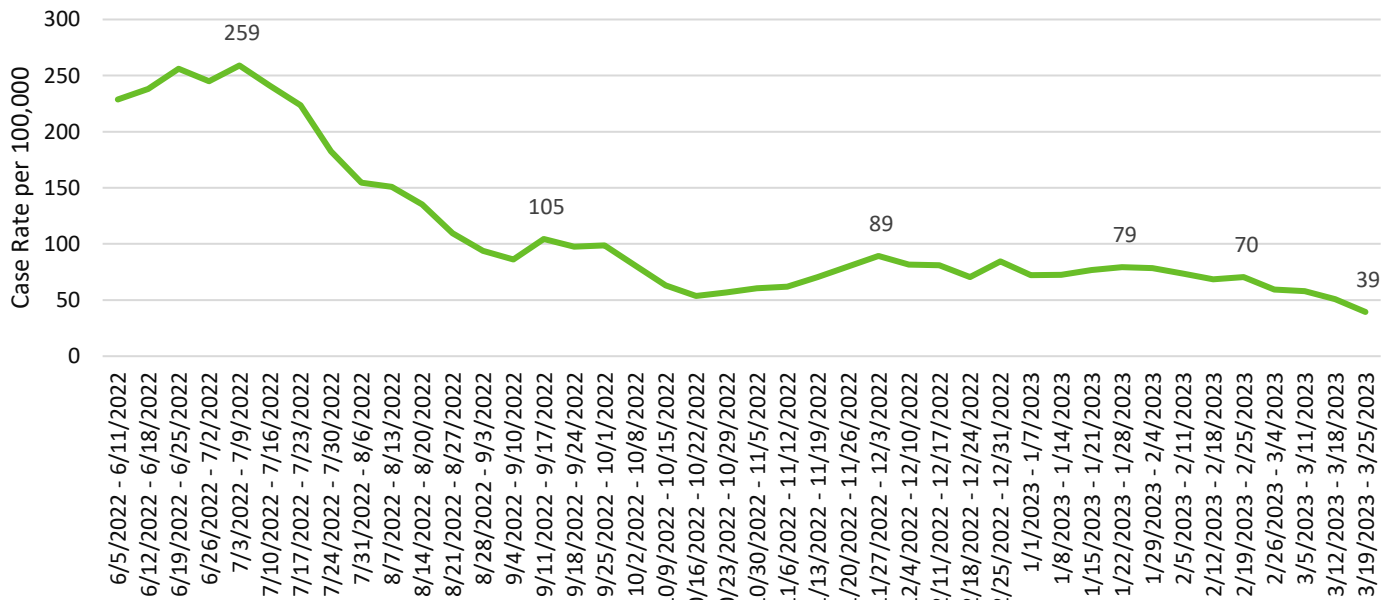
CASE DATA:

The Washington State Disease Reporting System (WDRS) is the data source for all case data. Some data have been suppressed due to inaccuracies. Not all tables and graphs will have the same denominator. All trend data are by symptom onset date or date of first positive COVID test. All data are preliminary and subject to change.

SNOHOMSH COUNTY SUMMARY:

- Snohomish County is currently in the low-risk transmission category.
- The Snohomish County COVID-19 case rate continues to trend downward.
- COVID-19-related hospitalizations continue to decline and are less than 4/100,000.
- Higher rates of COVID-19 transmission were seen in the central urban (Lynnwood and S. Everett) and the rural east parts of the county.
- Case rates decreased amongst all age groups, except 20-29-year-olds, which saw a slight increase. Highest case-rates are amongst our 70+ population, which is due to higher rates of testing, and small population size.
- All race/ethnicity case rates decreased except amongst Native Hawaiian/Pacific Islanders which increased in the past week. This is partially due to small population size in Snohomish County.
- Cases associated with reported LTCF outbreaks continue to decrease. There were no new LTCF outbreaks for the past week.

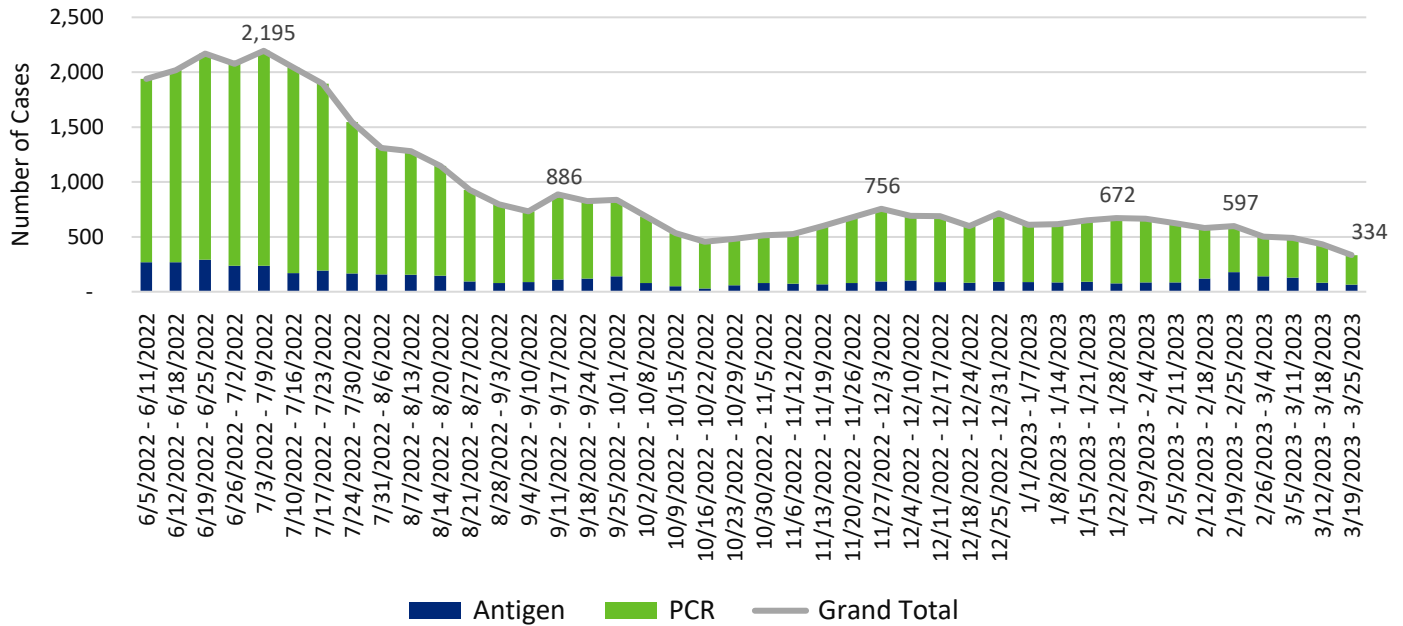
Snohomish County COVID-19 Weekly Case Rates per 100,000 by Symptom Onset Date



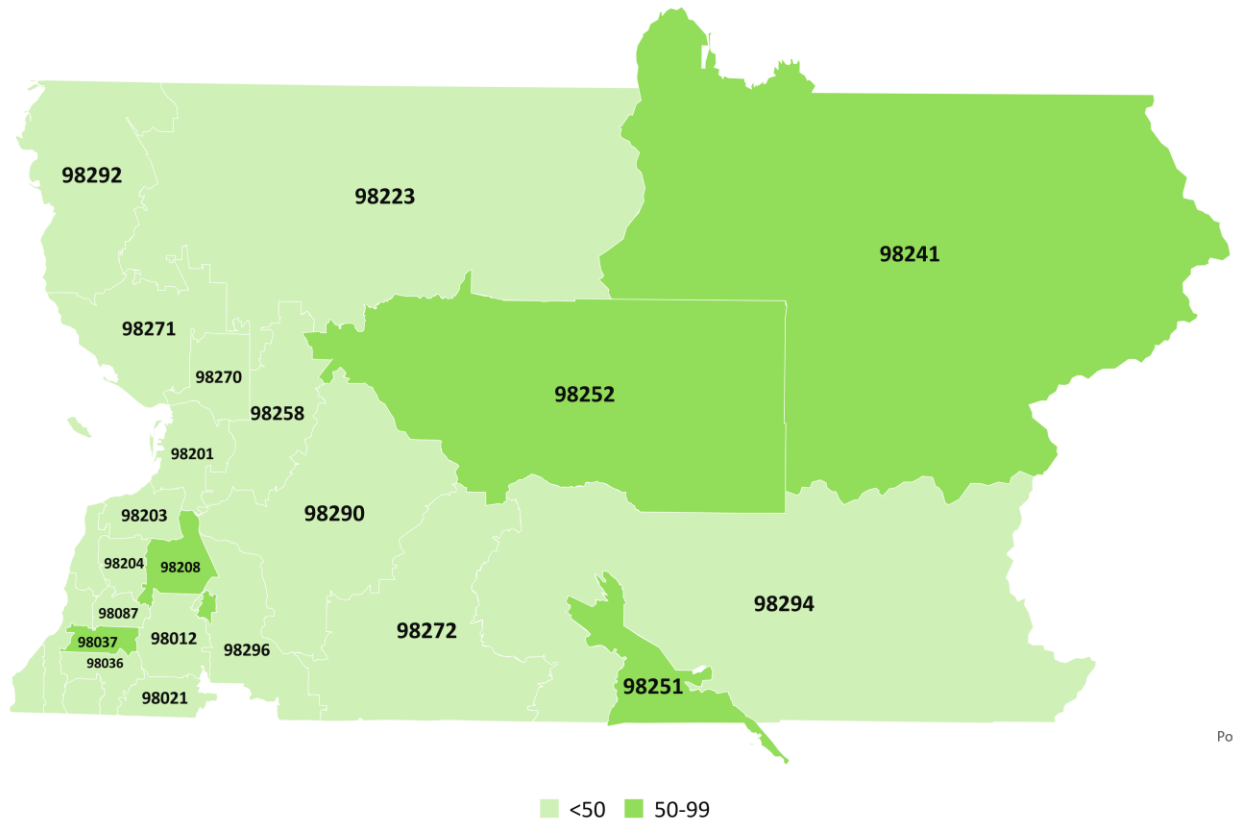
Weekly COVID-19 Graphs

June 5, 2022 – March 25, 2023

Snohomish County COVID-19 Cases by Onset Date



Snohomish County COVID-19 Case Rates per 100,000 by Zip Code March 19-25, 2023

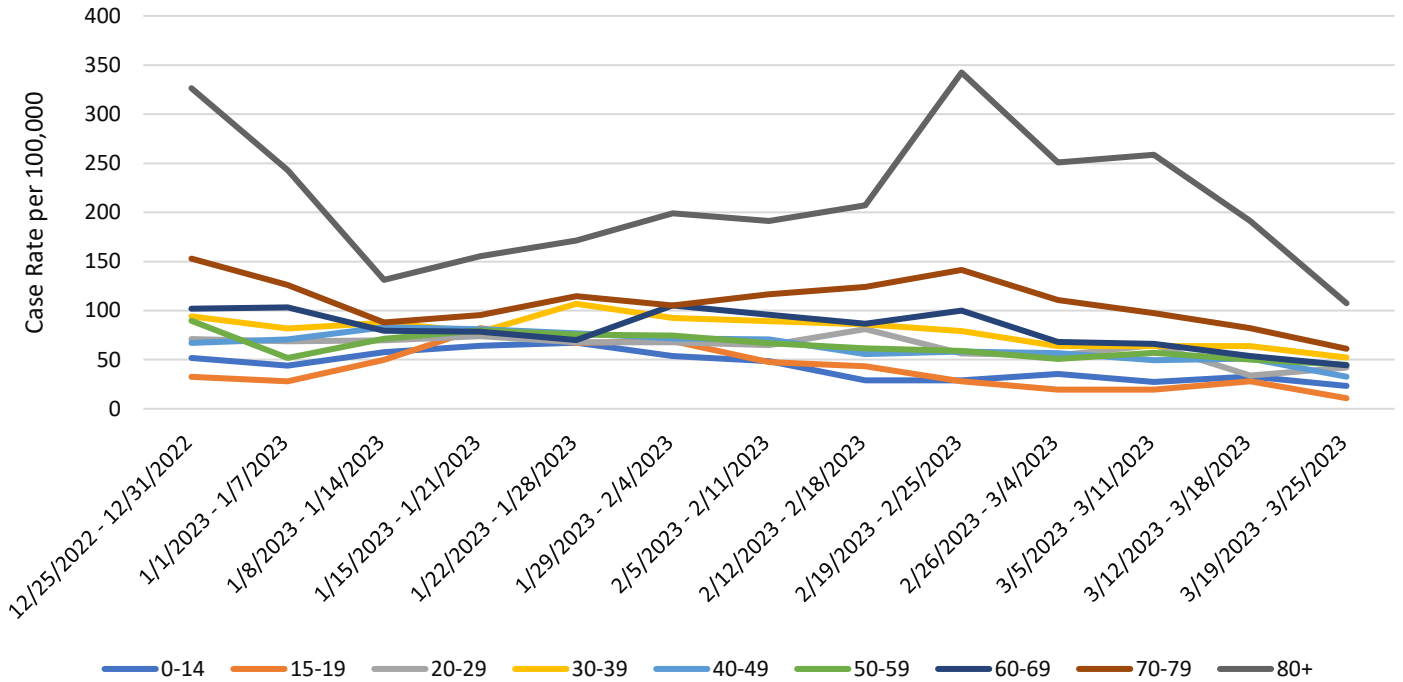


Powered by Bing
© TomTom

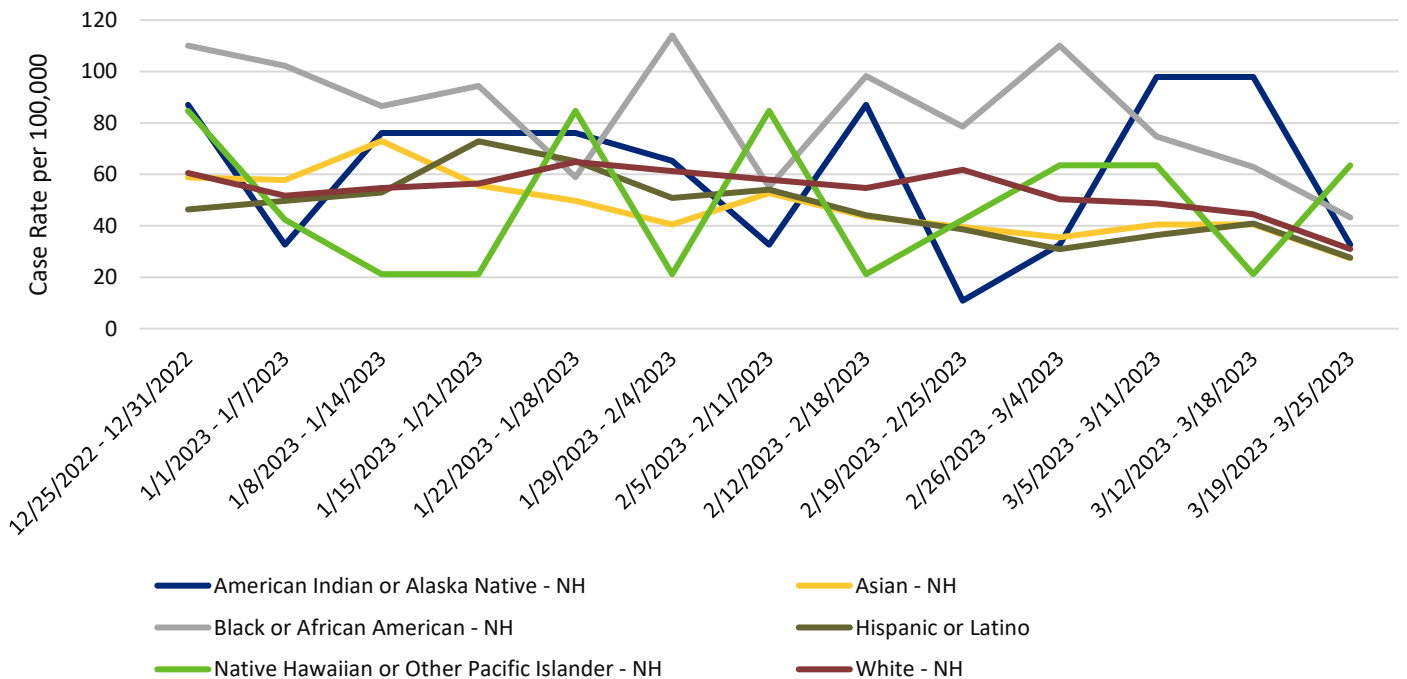
Weekly COVID-19 Graphs

June 5, 2022 – March 25, 2023

Snohomish County COVID-19 Case Rates per 100,000 by Illness Onset Date and Age Group



Snohomish County COVID-19 Case Rates per 100,000 by Illness Onset Date and Race/Ethnicity

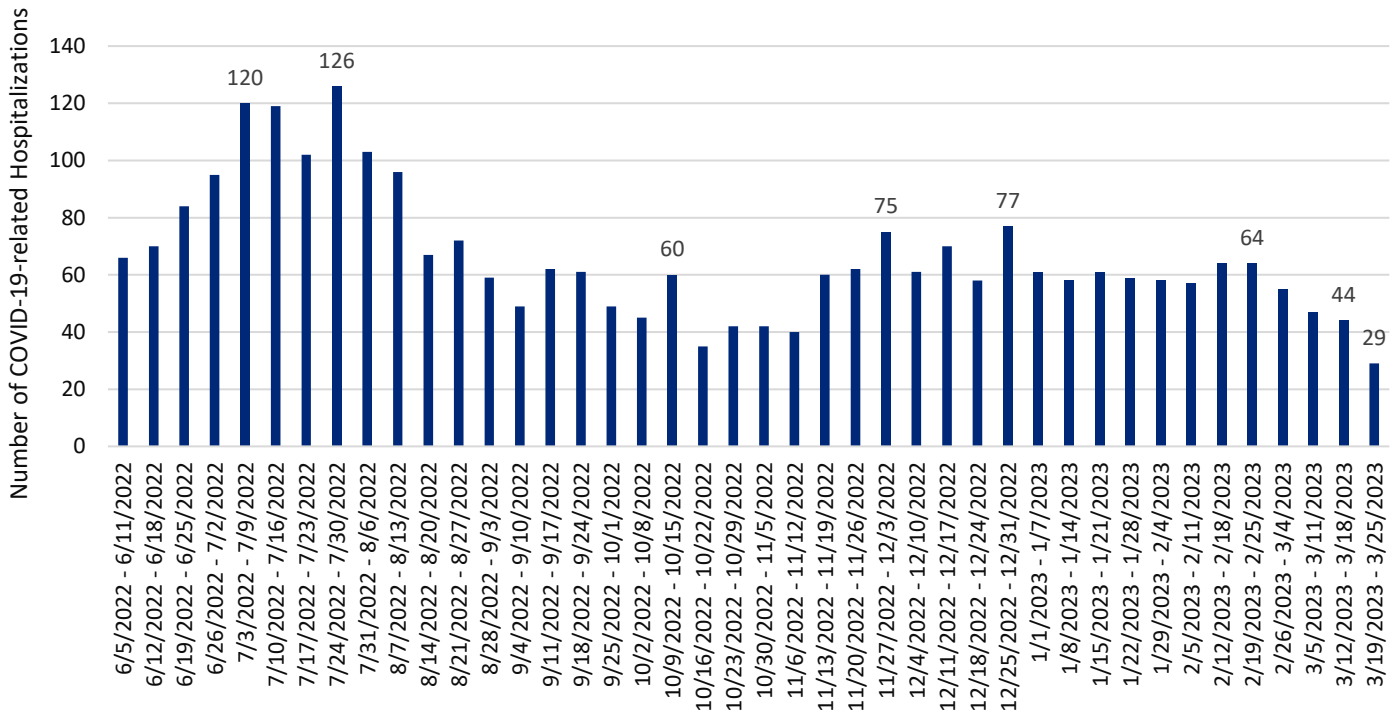


Weekly COVID-19 Graphs

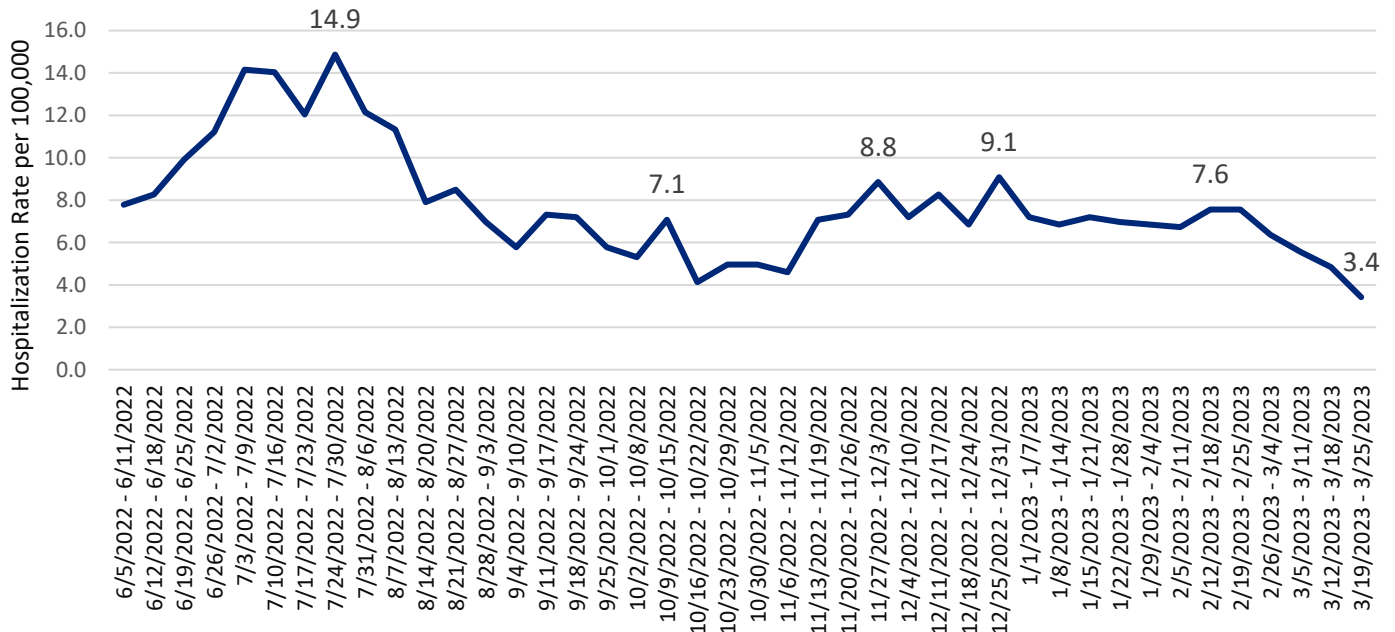
June 5, 2022 – March 25, 2023

HOSPITALIZATIONS:

Snohomish County COVID-related Hospitalizations by Week of Illness Onset



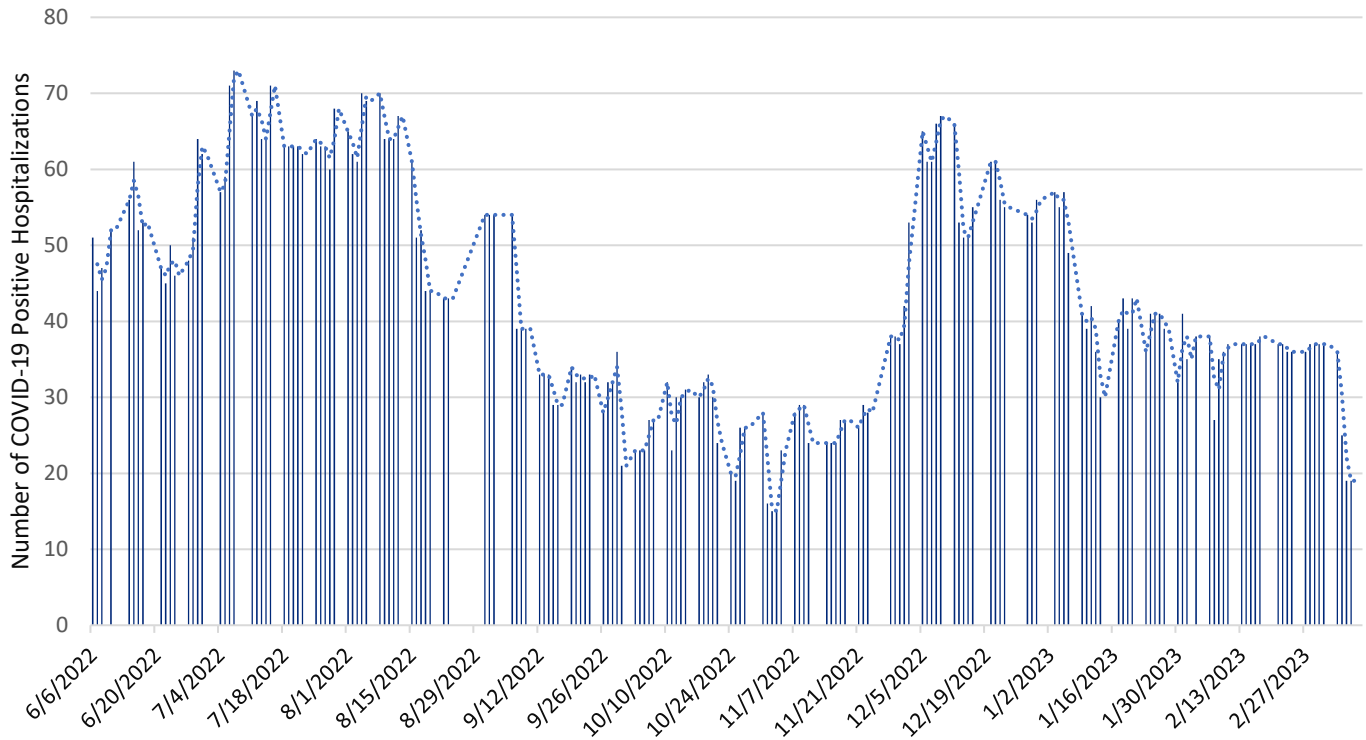
Snohomish County COVID-19 Hospitalization Case Rate per 100,000 by Week of Illness Onset



Weekly COVID-19 Graphs

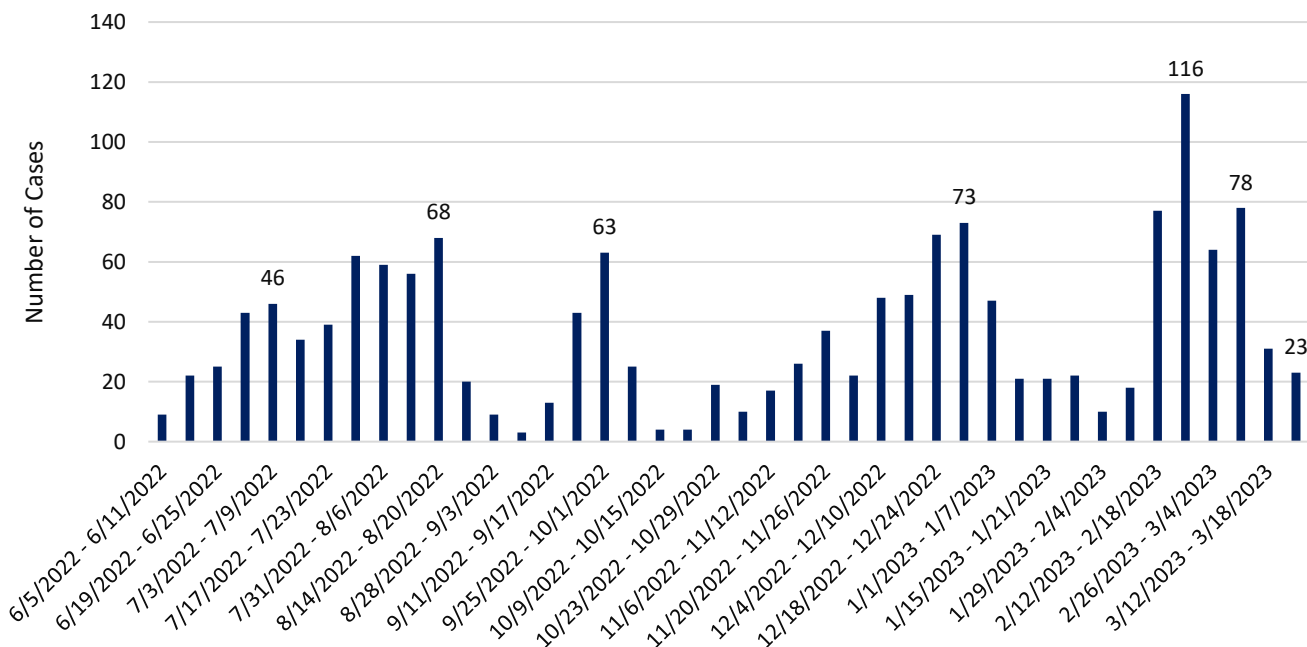
June 5, 2022 – March 25, 2023

Snohomish County Point-in-Time COVID-19 Hospital Census



*Data source: WA Health (wahealth.doh.wa.gov)

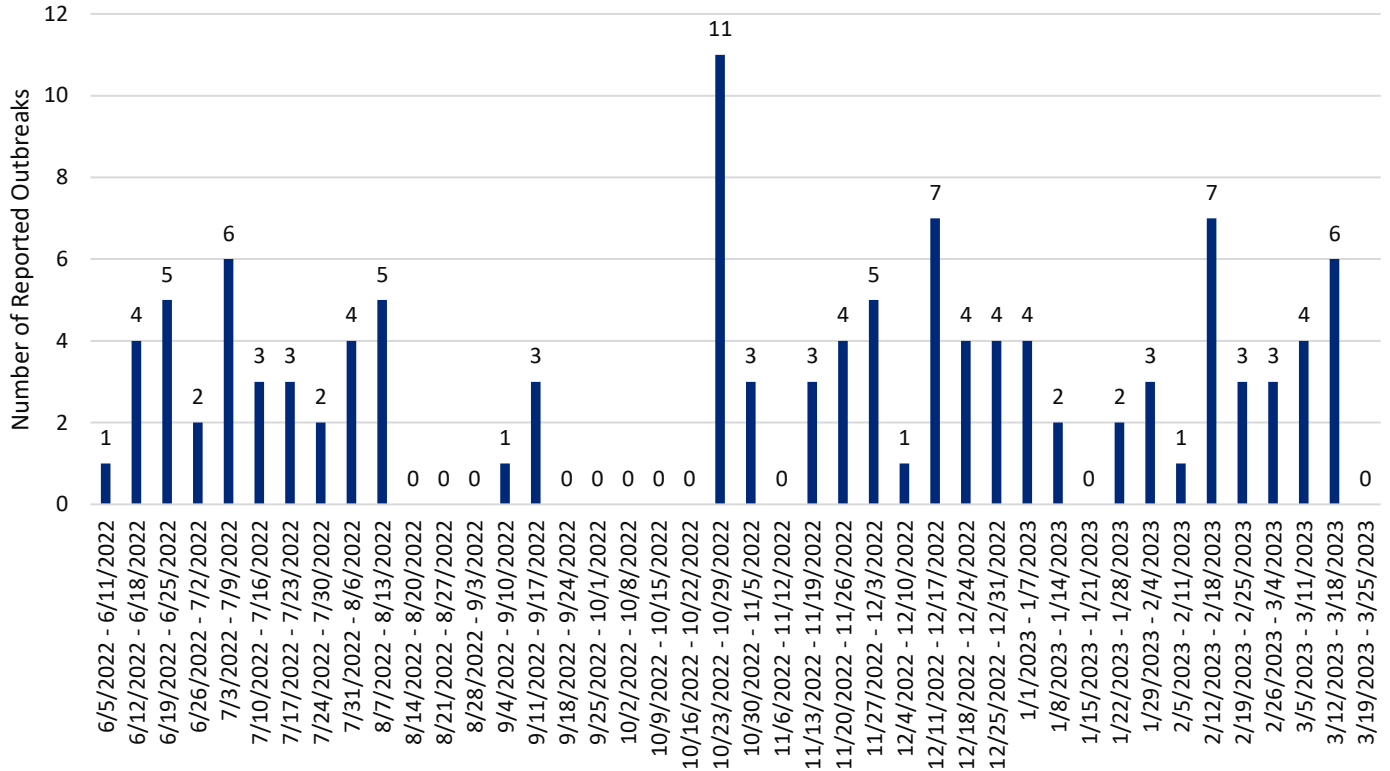
Snohomish County Long-term Care Facility Outbreak Associated COVID-19 Cases by Onset Date



Weekly COVID-19 Graphs

June 5, 2022 – March 25, 2023

Snohomish County Long-term Care Facility & Adult Family Home COVID-19 Outbreaks by Date of Outbreak Notification



New Cases (per 100,000 population in the last 7 days)	Indicators	Low	Medium	High
Fewer than 200 39	New COVID-19 admissions per 100,000 population (7-day total) 3.4	<10.0	10.0-19.9	≥20.0
	Percent of staffed inpatient beds occupied by COVID-19 patients (7-day average) 4%	<10.0%	10.0-14.9%	≥15%
200 or more	New COVID-19 admissions per 100,000 population (7-day total)	NA	<10.0	≥10.0
	Percent of staffed inpatient beds occupied by COVID-19 patients (7-day average)	NA	<10%	≥10.0%

Additional Resources:

- Washington State Department of Health COVID-19 Data Dashboard: <https://doh.wa.gov/emergencies/covid-19/data-dashboard>