

## Weekly COVID-19 Graphs

June 5, 2022 – March 11, 2023

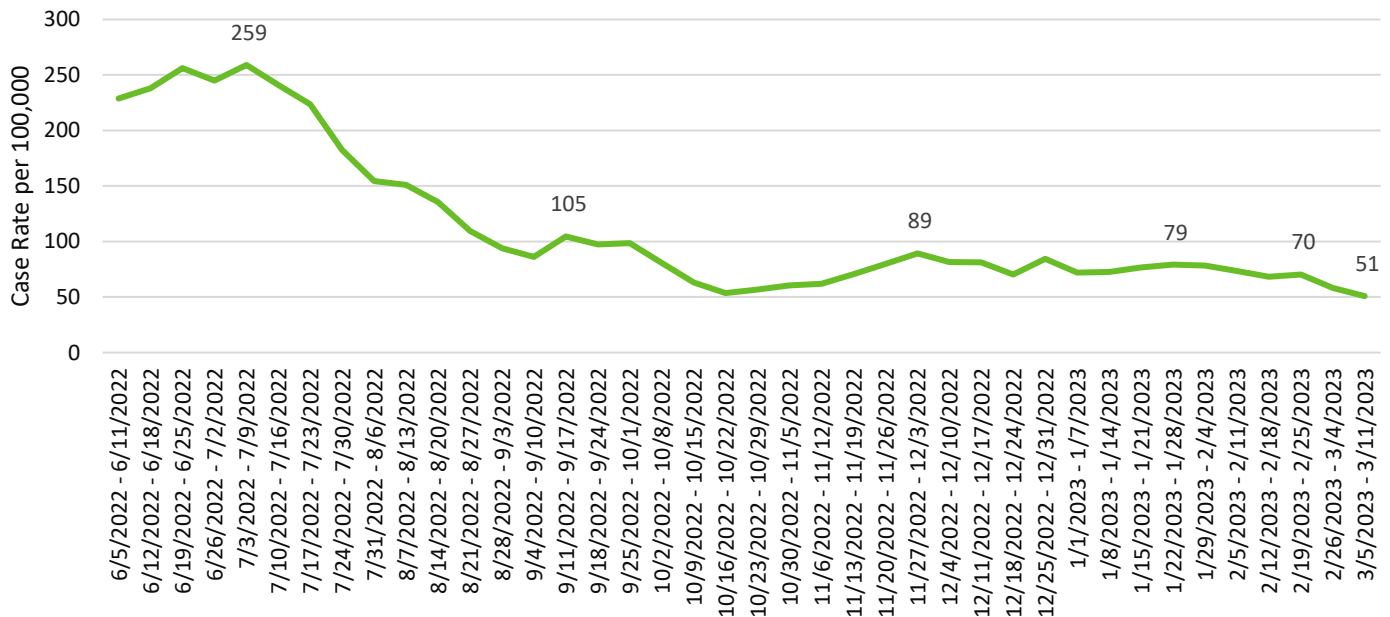
### CASE DATA:

The Washington State Disease Reporting System (WDRS) is the data source for all case data. Some data have been suppressed due to inaccuracies. Not all tables and graphs will have the same denominator. All trend data are by symptom onset date or date of first positive COVID test. All data are preliminary and subject to change.

### SNOHOMSH COUNTY SUMMARY:

- Snohomish County is currently in the low-risk transmission category.
- Our case rate has been trending downward over the last couple of weeks.
- COVID-19-related hospitalizations continue to decline and are down to 5/100,000.
- Higher rates of COVID-19 transmission were seen in the central urban and some rural parts of the county.
- Case rates decreased amongst all age groups, except 20-29-year-olds and 80+ year-olds, which saw a slight increase. Highest case-rates are amongst our 70+ population, which is due to higher rates of testing, and small population size.
- All race/ethnicity case rates decreased or remained the same. Note, only 35% of cases had race and ethnicity data.
- Cases associated with reported LTCF outbreaks continue to decrease. This is likely due to the resolution of larger LTCF outbreaks. There were 4 new LTCF outbreaks for the past week.

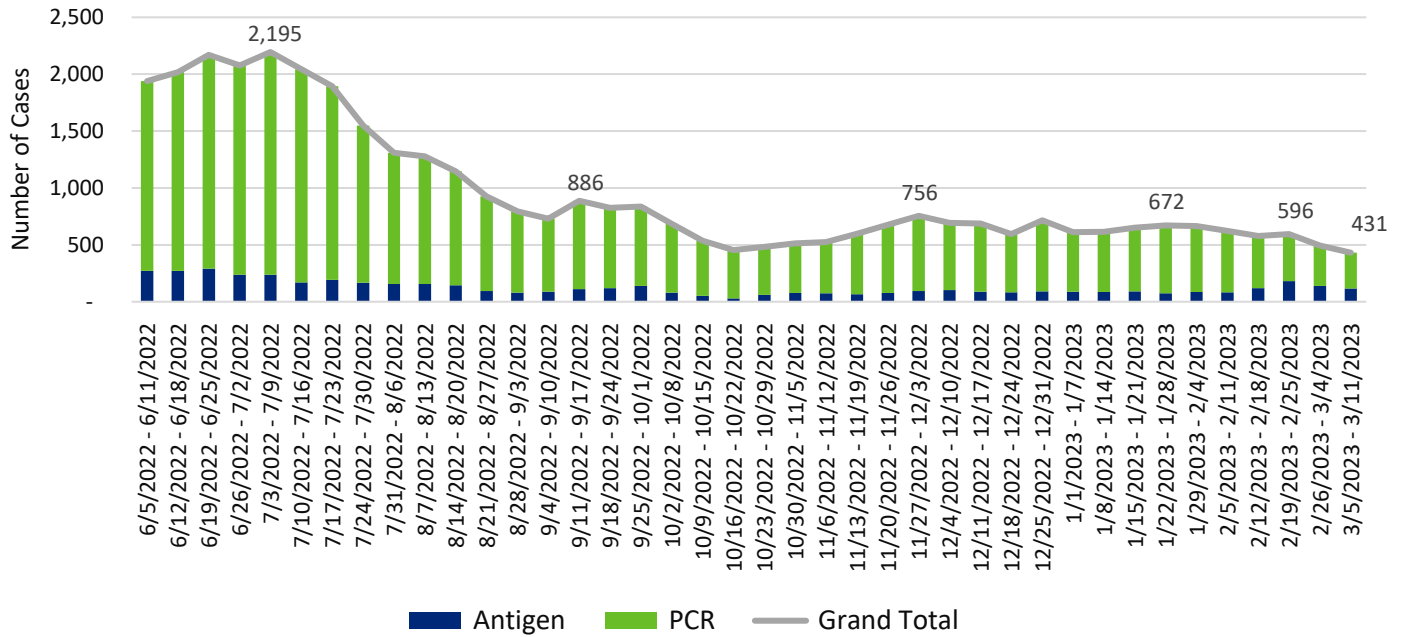
**Snohomish County COVID-19 Weekly Case Rates per 100,000 by Symptom Onset Date**



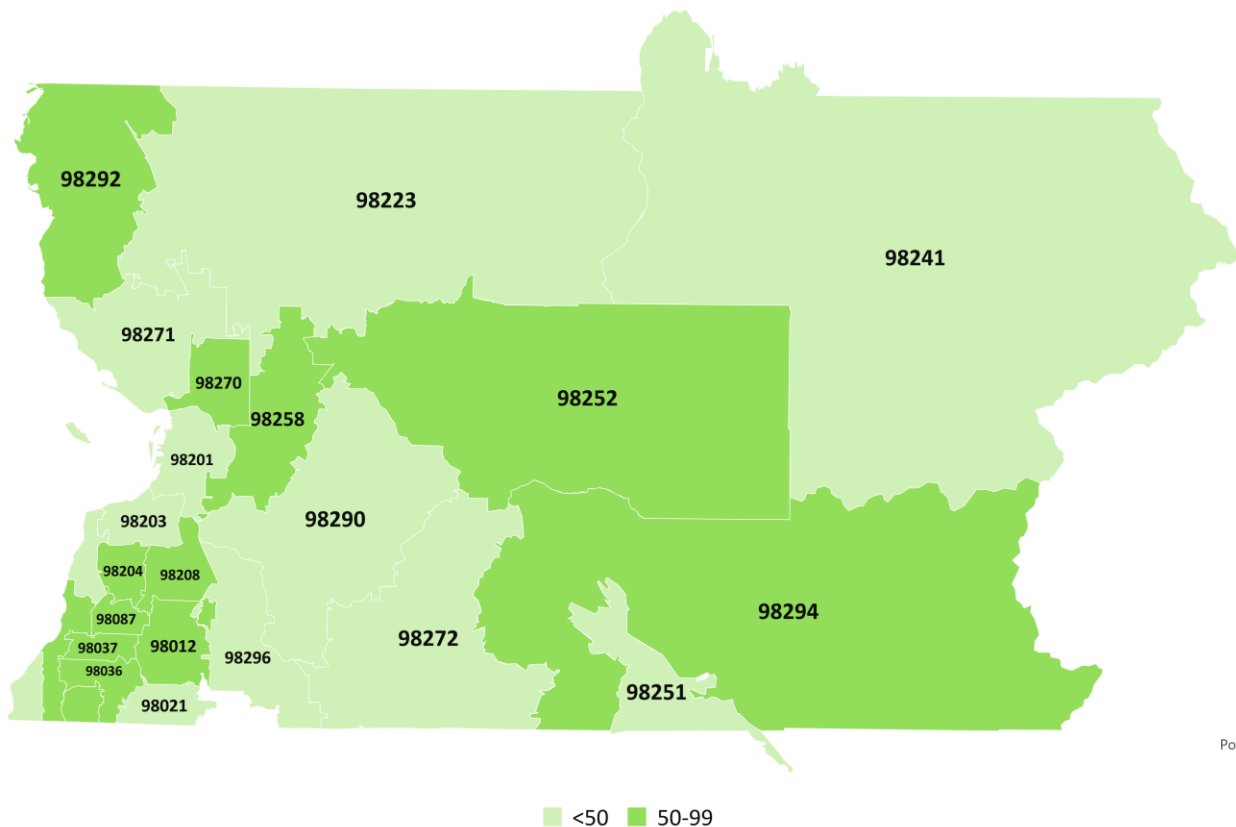
## Weekly COVID-19 Graphs

June 5, 2022 – March 11, 2023

### Snohomish County COVID-19 Cases by Onset Date



### Snohomish County COVID-19 Case Rates per 100,000 by Zip Code March 5-11, 2023

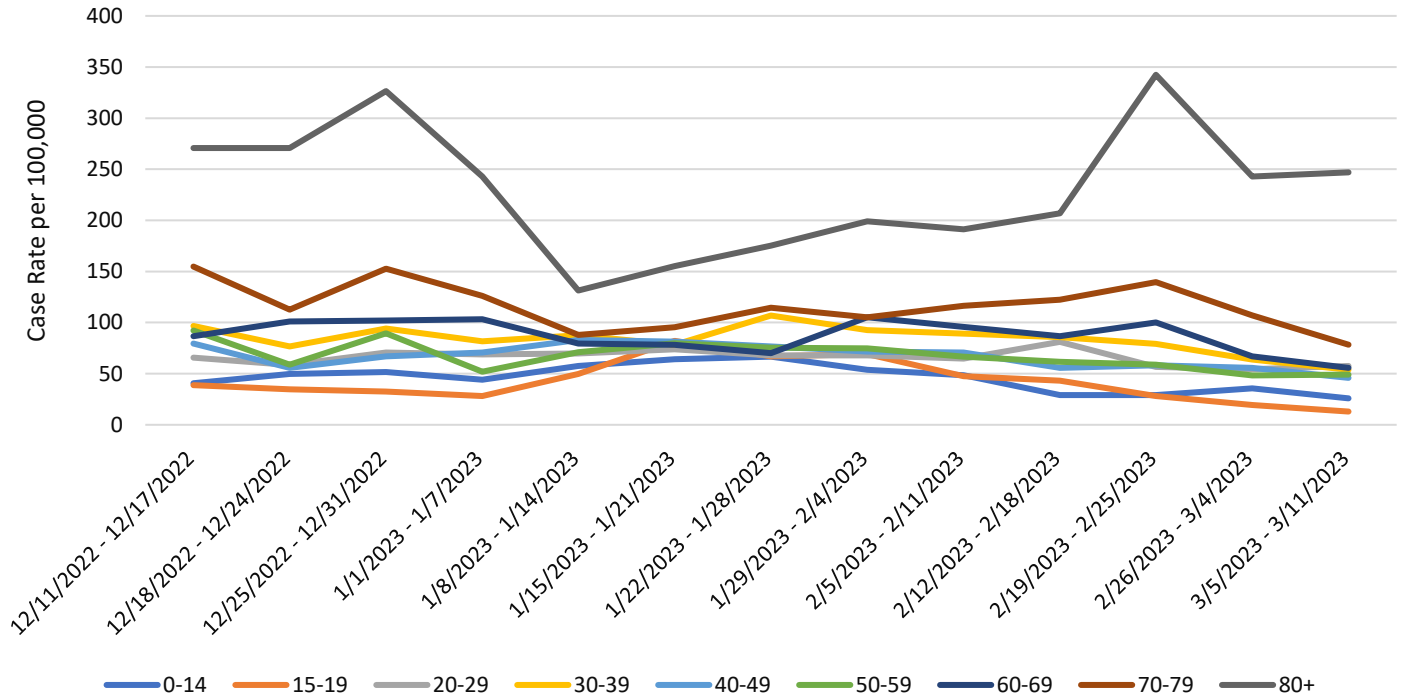


Powered by Bing  
© TomTom

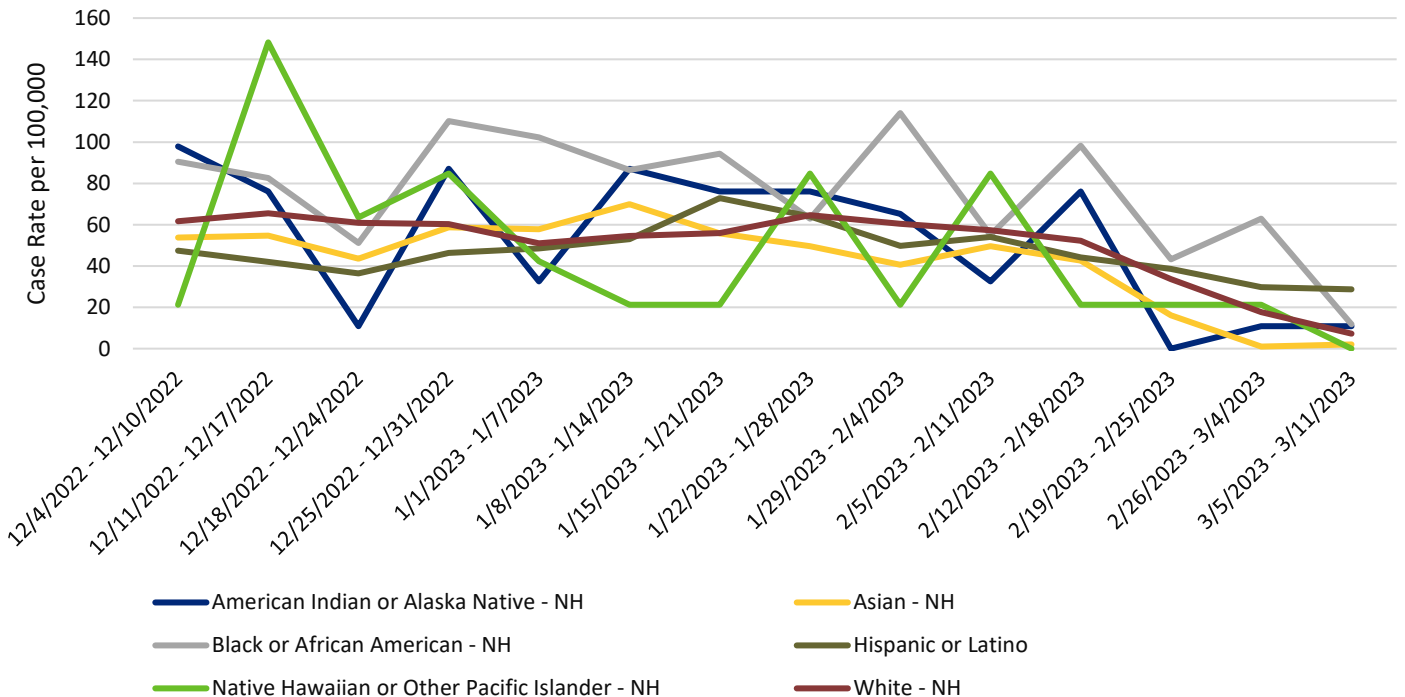
## Weekly COVID-19 Graphs

June 5, 2022 – March 11, 2023

### Snohomish County COVID-19 Case Rates per 100,000 by Illness Onset Date and Age Group



### Snohomish County COVID-19 Case Rates per 100,000 by Illness Onset Date and Race/Ethnicity

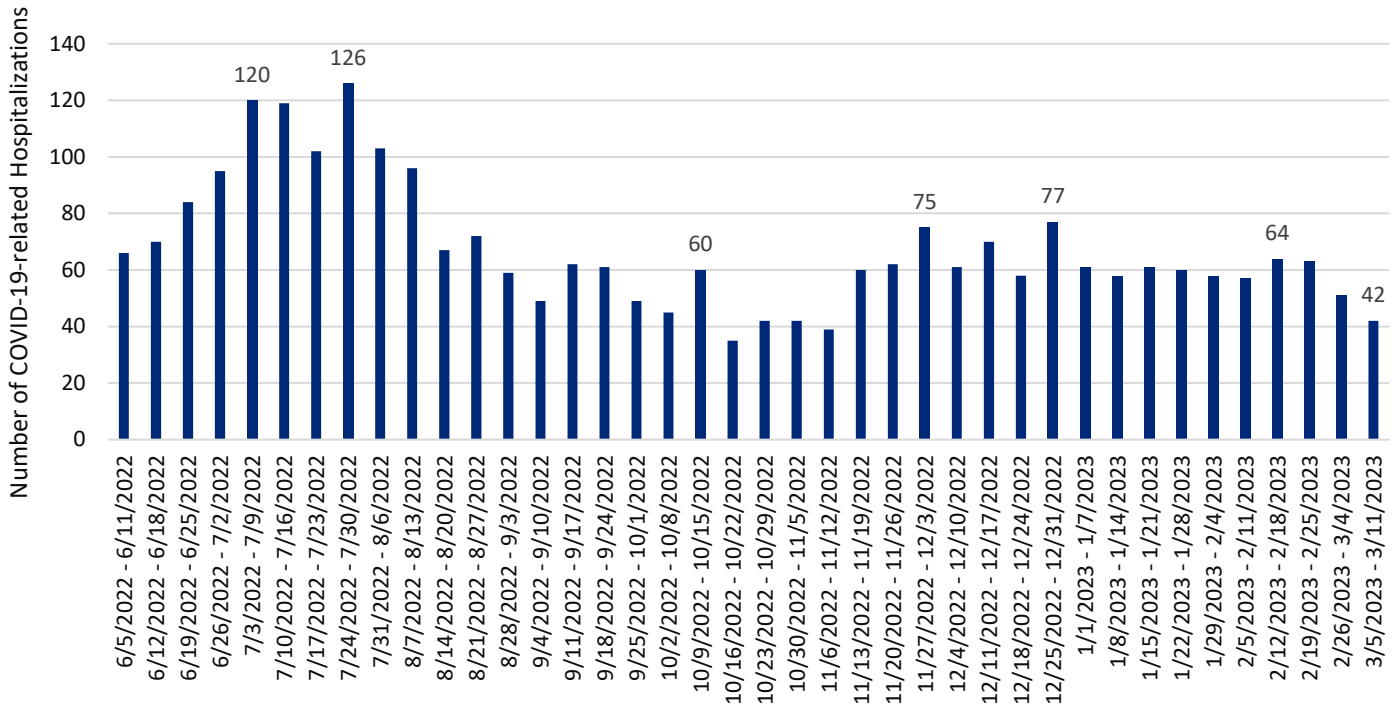


## Weekly COVID-19 Graphs

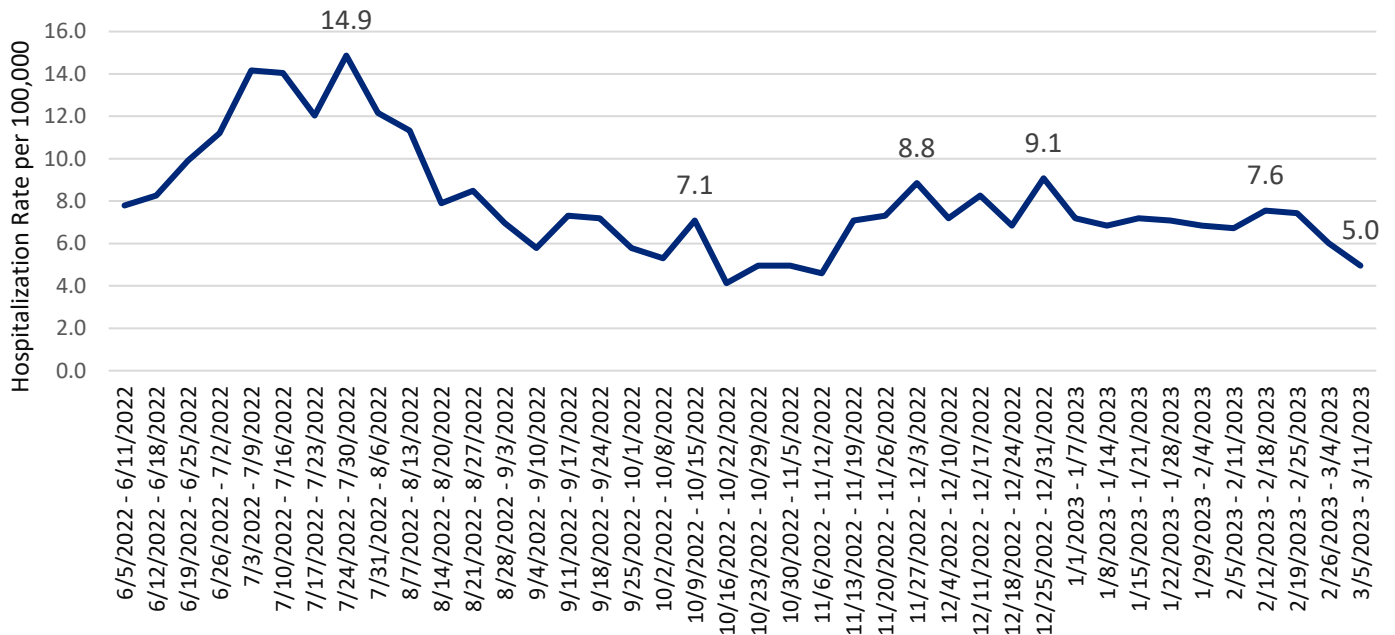
June 5, 2022 – March 11, 2023

### HOSPITALIZATIONS:

**Snohomish County COVID-related Hospitalizations by Week of Illness Onset**



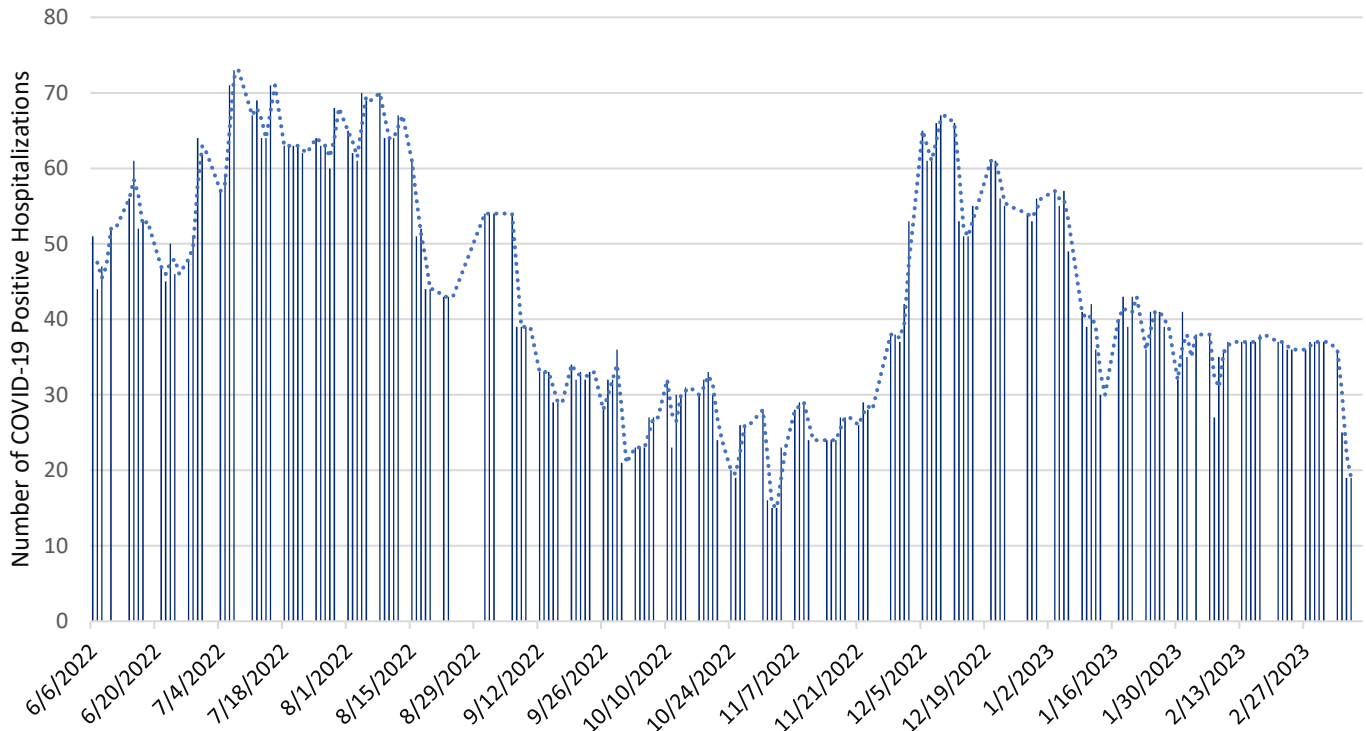
**Snohomish County COVID-19 Hospitalization Case Rate per 100,000 by Week of Illness Onset**



## Weekly COVID-19 Graphs

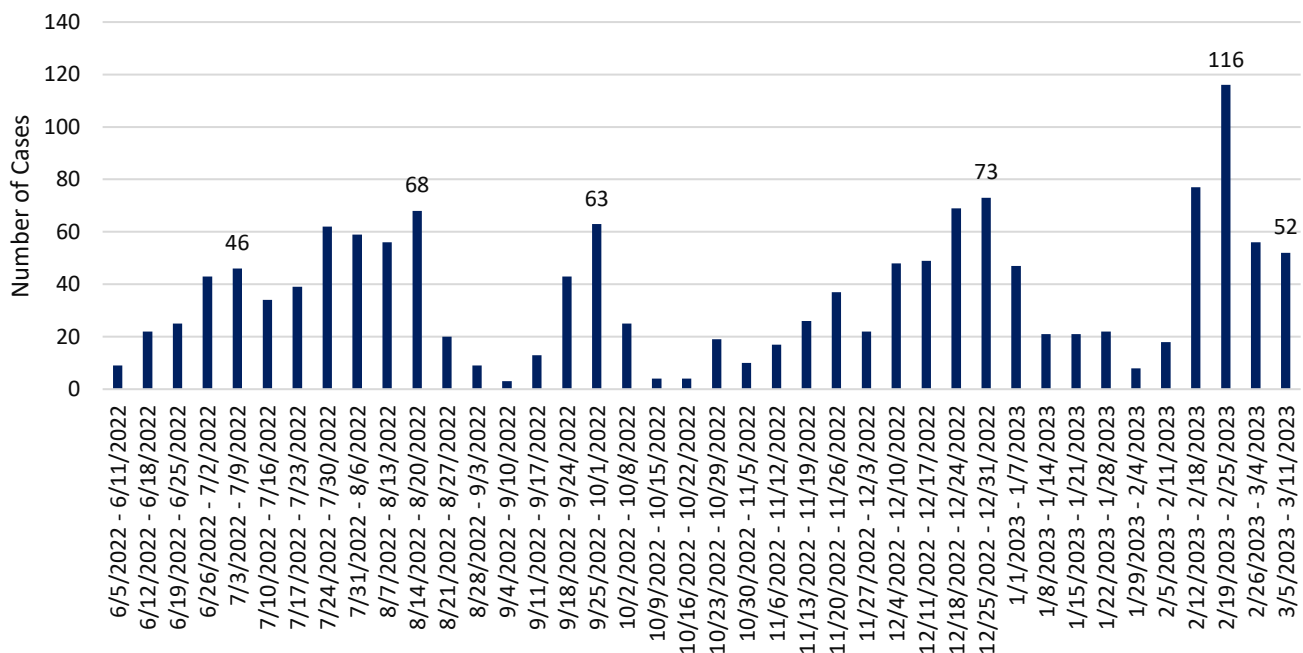
June 5, 2022 – March 11, 2023

### Snohomish County Point-in-Time COVID-19 Hospital Census



\*Data source: WA Health (wahealth.doh.wa.gov)

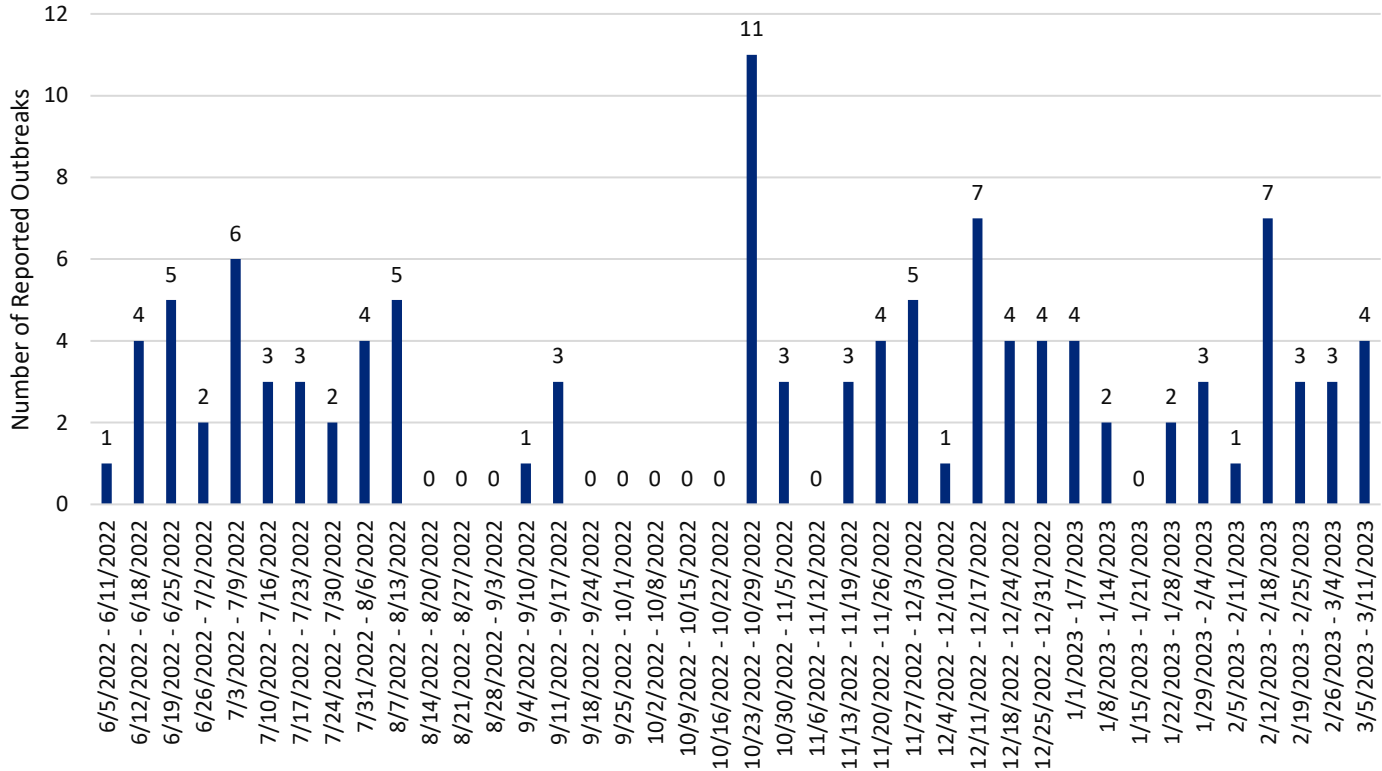
### Snohomish County Long-term Care Facility Outbreak Associated COVID-19 Cases by Onset Date



## Weekly COVID-19 Graphs

June 5, 2022 – March 11, 2023

### Snohomish County Long-term Care Facility & Adult Family Home COVID-19 Outbreaks by Date of Outbreak Notification



New Cases (per 100,000 population in the last 7 days)	Indicators	Low	Medium	High
Fewer than 200 <b>51</b>	New COVID-19 admissions per 100,000 population (7-day total) <b>5.0</b>	<10.0	10.0-19.9	≥20.0
	Percent of staffed inpatient beds occupied by COVID-19 patients (7-day average) <b>4%</b>	<10.0%	10.0-14.9%	≥15%
200 or more	New COVID-19 admissions per 100,000 population (7-day total)	NA	<10.0	≥10.0
	Percent of staffed inpatient beds occupied by COVID-19 patients (7-day average)	NA	<10%	≥10.0%

#### Additional Resources:

- Washington State Department of Health COVID-19 Data Dashboard: <https://doh.wa.gov/emergencies/covid-19/data-dashboard>