

Weekly COVID-19 Graphs

June 5, 2022 – March 4, 2023

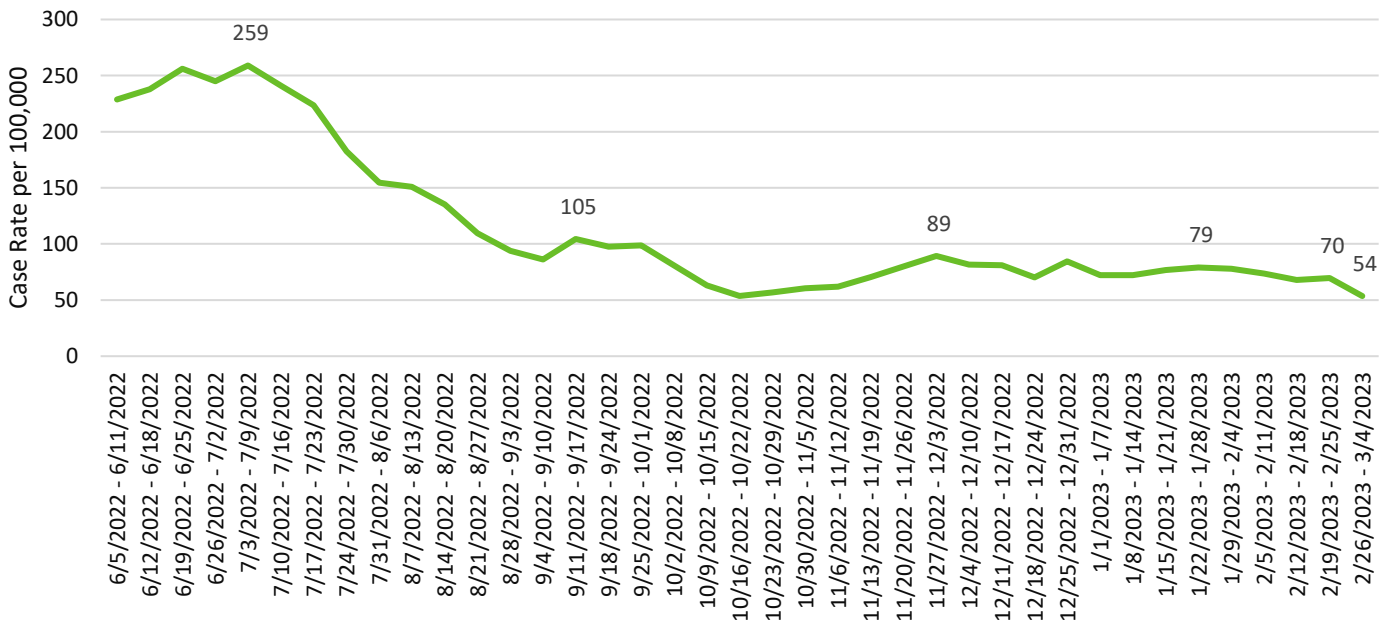
CASE DATA:

The Washington State Disease Reporting System (WDRS) is the data source for all case data. Some data have been suppressed due to inaccuracies. Not all tables and graphs will have the same denominator. All trend data are by symptom onset date or date of first positive COVID test. All data are preliminary and subject to change.

SNOHOMSH COUNTY SUMMARY:

- Snohomish County is currently in the low-risk transmission category.
- Our case rate trend has remained steady since the beginning of January 2023. There was a slight decrease in the case rate for the week of 2/26-3/4/2023. This will be watched closely over the next few weeks.
- COVID-19-related hospitalizations dipped slightly and is down below 6/100,000.
- Higher rates of COVID-19 transmission were seen in the rural and north parts of the county.
- Case rates decreases amongst all age groups, except 0-14-year-olds which saw a slight increase. Highest case-rates are amongst our 70+ population, which is due to higher rates of testing, and small population size.
- All race/ethnicity case rates decreased. Note, only 18% of cases had race and ethnicity data. This is being worked on at the State level.
- Cases associated with reported LTCF outbreaks decreased from 166/100K down to 53/100K. This is likely due to the resolution of larger LTCF outbreaks. There were only 3 new LTCF outbreaks for the past week.

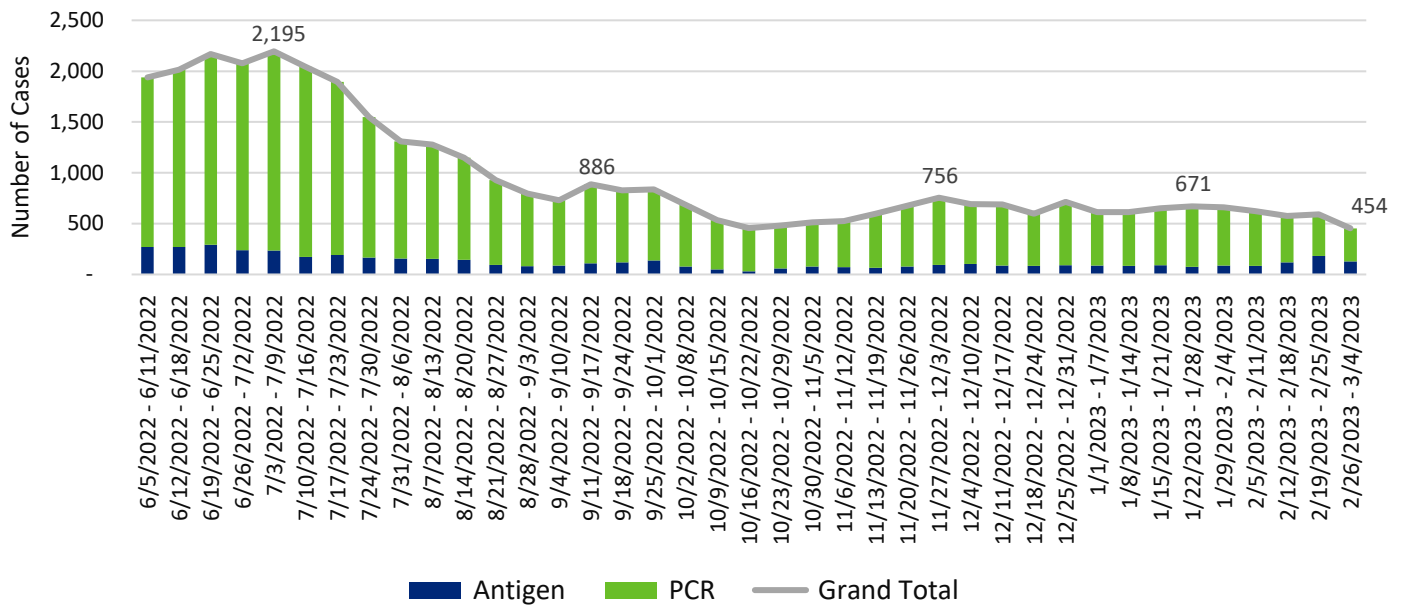
Snohomish County COVID-19 Weekly Case Rates per 100,000 by Symptom Onset Date



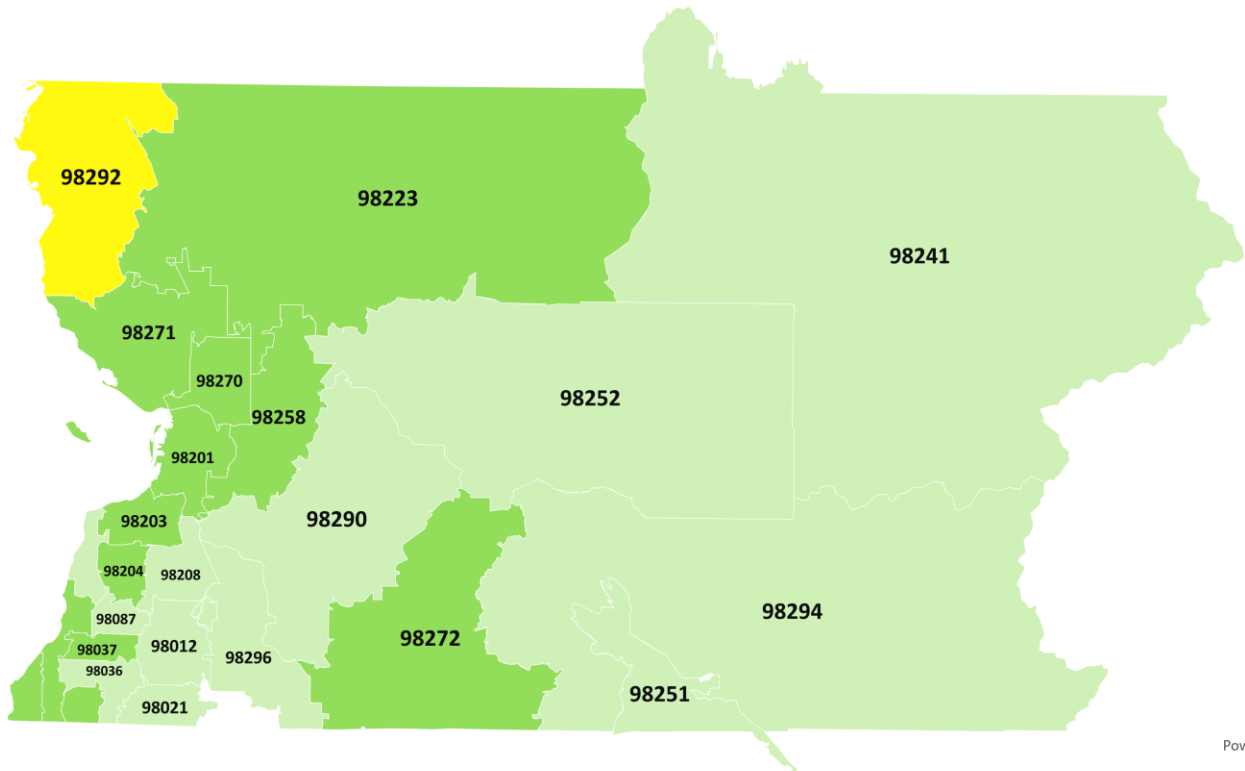
Weekly COVID-19 Graphs

June 5, 2022 – March 4, 2023

Snohomish County COVID-19 Cases by Onset Date



Snohomish County COVID-19 Case Rates per 100,000 by Zip Code February 26 - March 4, 2023

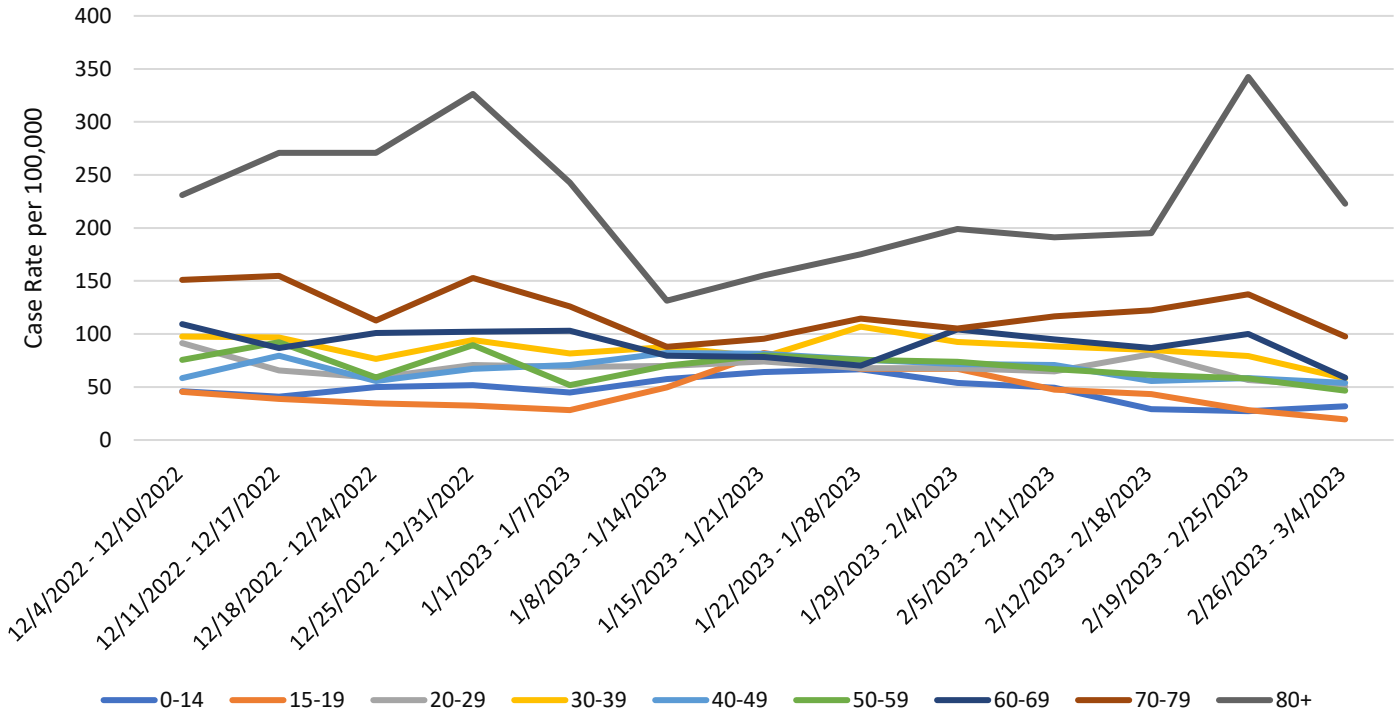


Powered by Bing
© TomTom

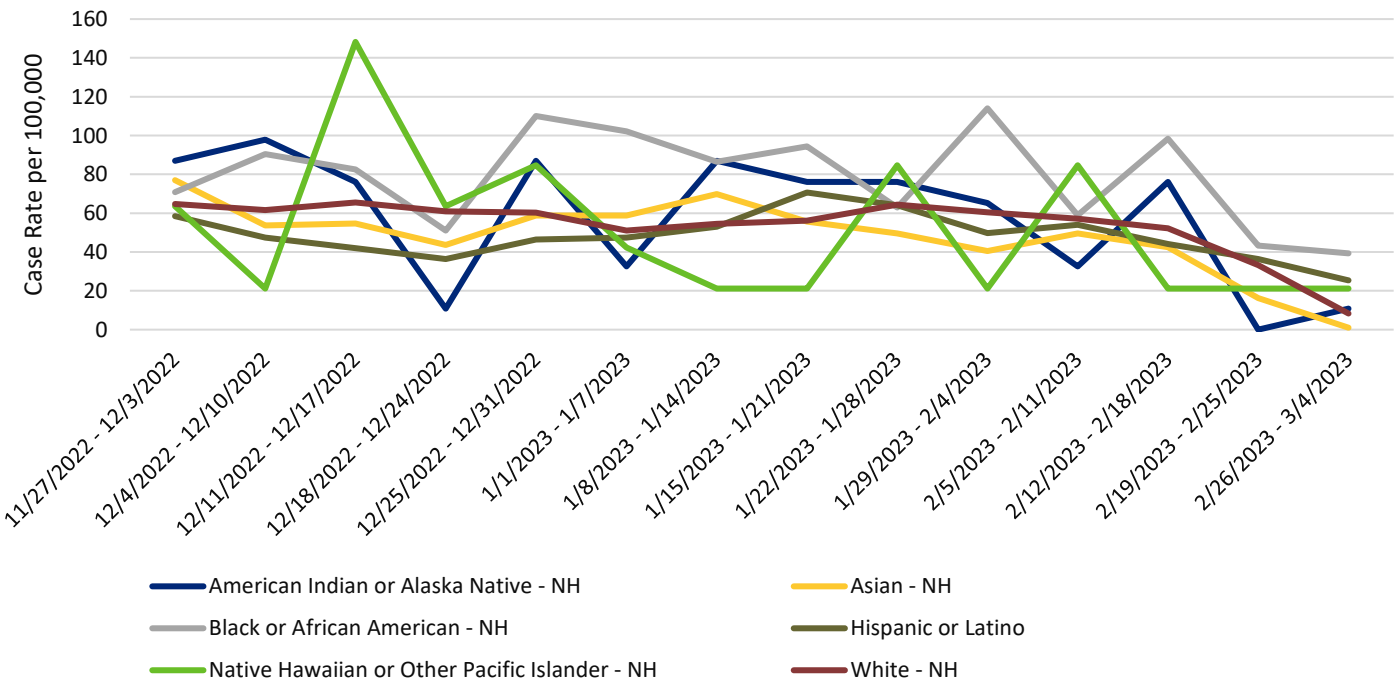
Weekly COVID-19 Graphs

June 5, 2022 – March 4, 2023

Snohomish County COVID-19 Case Rates per 100,000 by Illness Onset Date and Age Group



Snohomish County COVID-19 Case Rates per 100,000 by Illness Onset Date and Race/Ethnicity

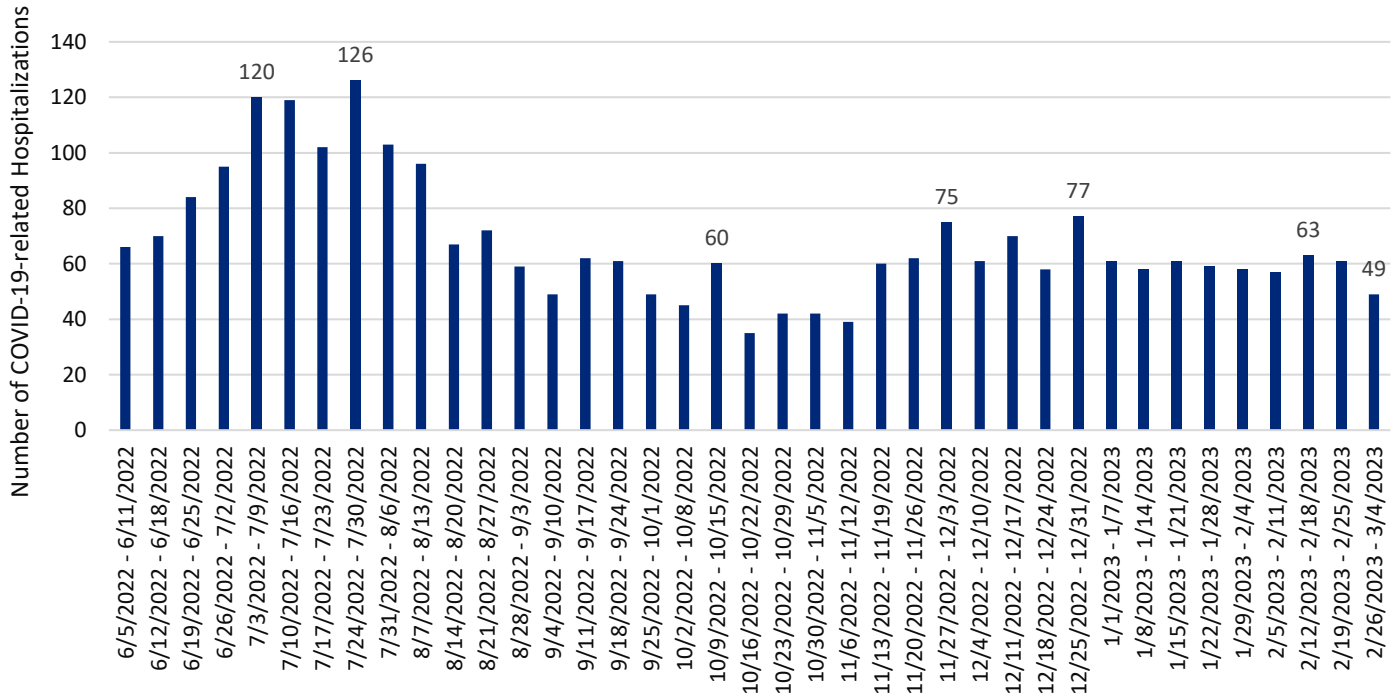


Weekly COVID-19 Graphs

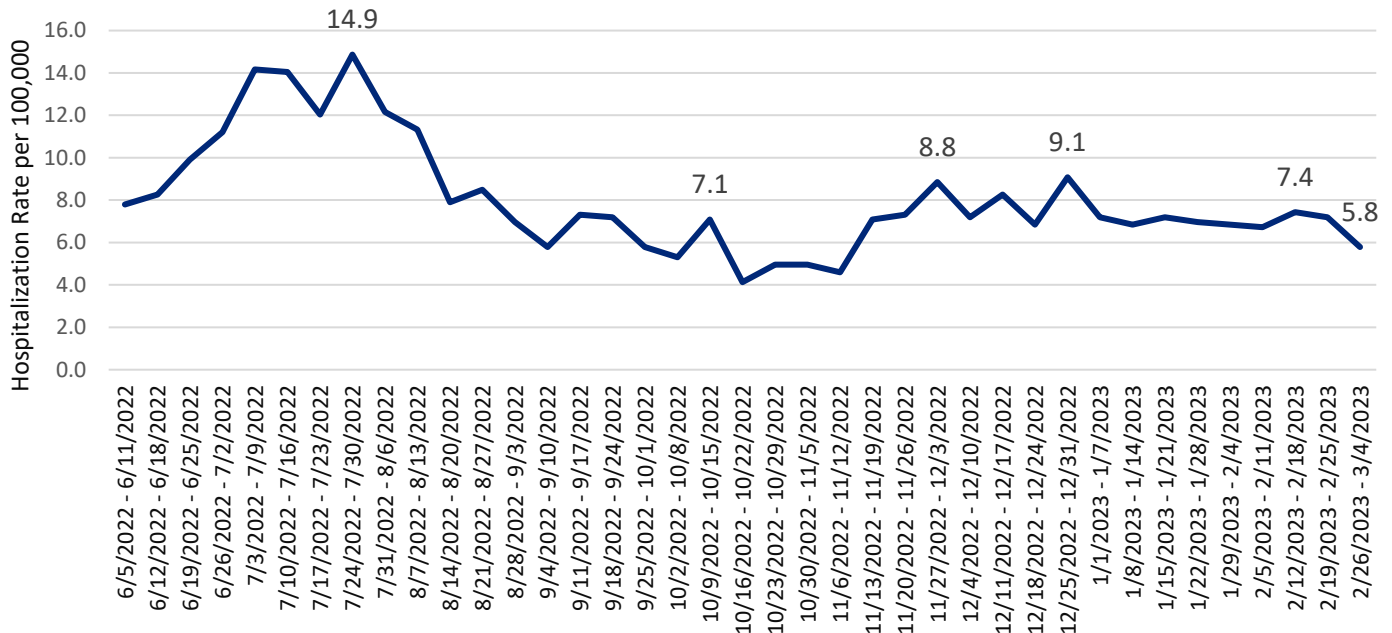
June 5, 2022 – March 4, 2023

HOSPITALIZATIONS:

Snohomish County COVID-related Hospitalizations by Week of Illness Onset



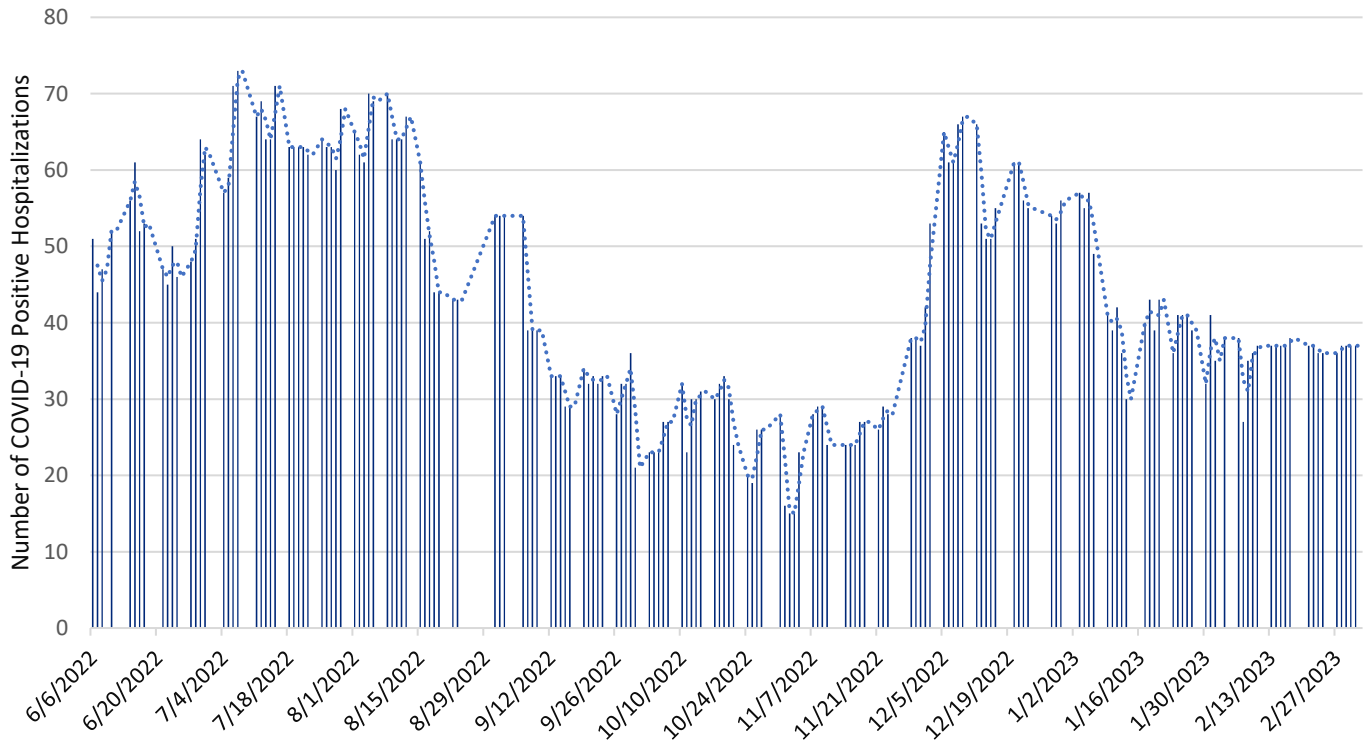
Snohomish County COVID-19 Hospitalization Case Rate per 100,000 by Week of Illness Onset



Weekly COVID-19 Graphs

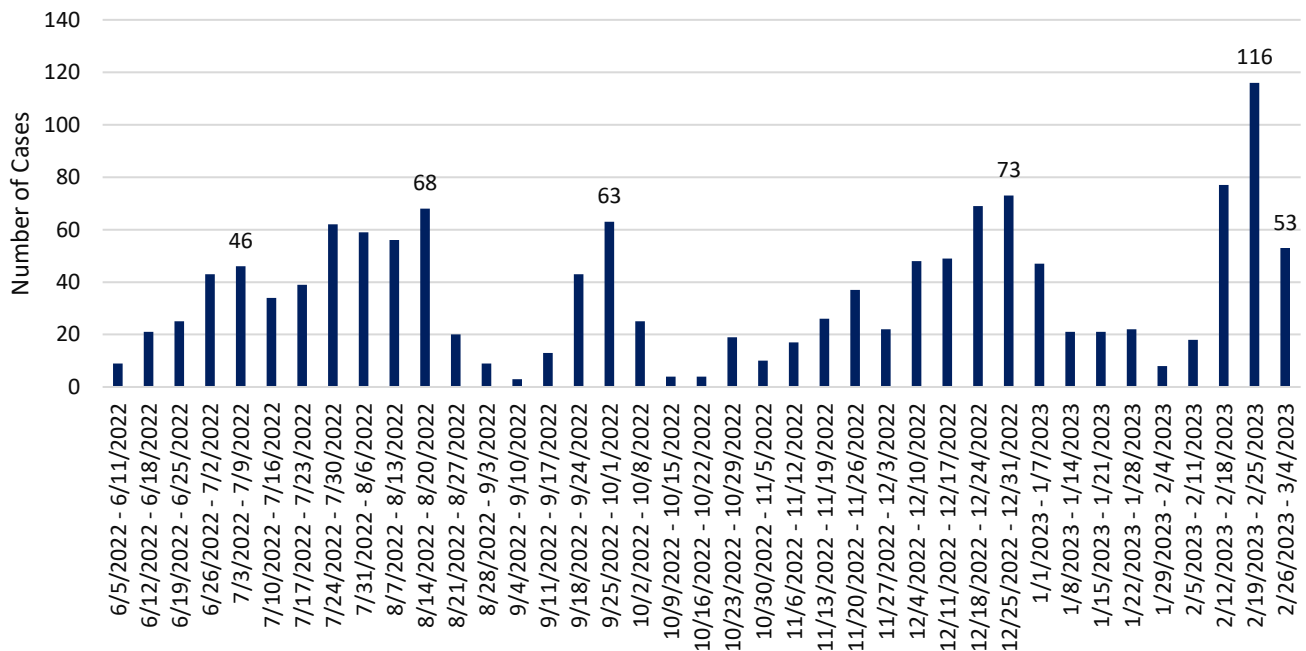
June 5, 2022 – March 4, 2023

Snohomish County Point-in-Time COVID-19 Hospital Census



*Data source: WA Health (wahealth.doh.wa.gov)

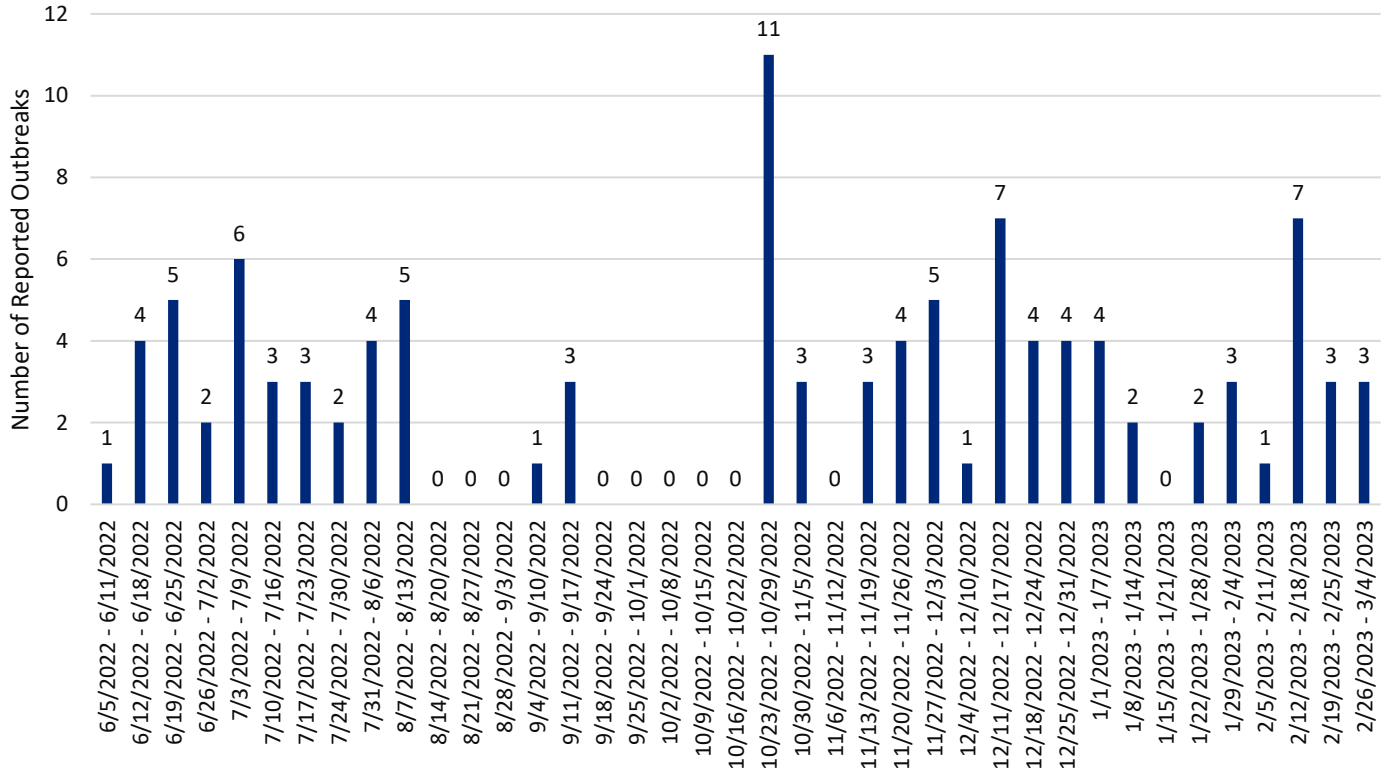
Snohomish County Long-term Care Facility Outbreak Associated COVID-19 Cases by Onset Date



Weekly COVID-19 Graphs

June 5, 2022 – March 4, 2023

Snohomish County Long-term Care Facility & Adult Family Home COVID-19 Outbreaks by Date of Outbreak Notification



New Cases (per 100,000 population in the last 7 days)	Indicators	Low	Medium	High
Fewer than 200 54	New COVID-19 admissions per 100,000 population (7-day total) 5.8	<10.0	10.0-19.9	≥20.0
	Percent of staffed inpatient beds occupied by COVID-19 patients (7-day average) 6%	<10.0%	10.0-14.9%	≥15%
200 or more	New COVID-19 admissions per 100,000 population (7-day total)	NA	<10.0	≥10.0
	Percent of staffed inpatient beds occupied by COVID-19 patients (7-day average)	NA	<10%	≥10.0%

Additional Resources:

- Washington State Department of Health COVID-19 Data Dashboard: <https://doh.wa.gov/emergencies/covid-19/data-dashboard>