

Weekly COVID-19 Graphs

June 5, 2022 – February 25, 2023

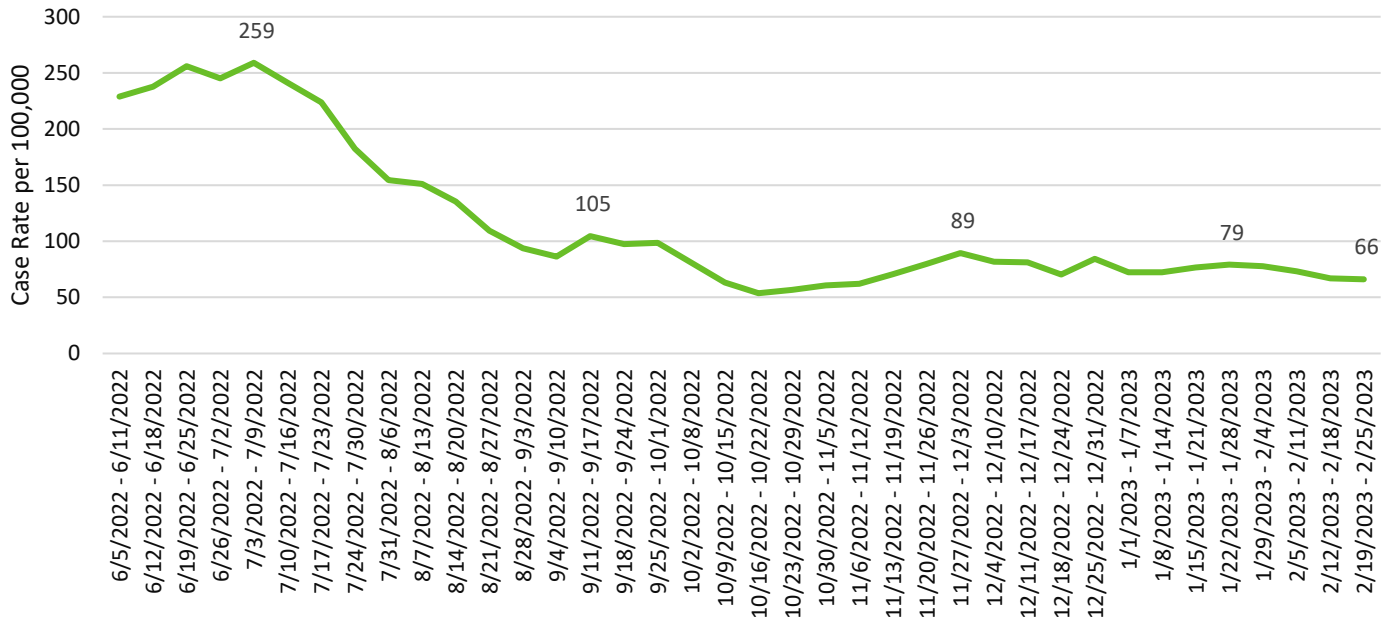
CASE DATA:

The Washington State Disease Reporting System (WDRS) is the data source for all case data. Some data have been suppressed due to inaccuracies. Not all tables and graphs will have the same denominator. All trend data are by symptom onset date or date of first positive COVID test. All data are preliminary and subject to change.

SNOHOMSH COUNTY SUMMARY:

- Snohomish County is currently in the low-risk transmission category.
- Our case rate trend has remained steady since the beginning of December 2022.
- COVID-19-related hospitalizations dipped slightly and is down below 6/100,000.
- Higher rates of COVID-19 transmission were seen in the rural and north parts of the county.
- Highest case-rates are amongst our 70+ population, which is due to higher rates of testing, and small population size. There was a large spike in cases amongst 80+ year-olds. This may be due to the recent increase in long-term care facility outbreaks.
- Race/ethnicity data were unstable for the week of 2/19-2/25/2023 and were not included in this report.
- Cases associated with reported LTCF outbreaks increased again for the second week in a row. This is due to an increase in reported outbreaks within the last couple of weeks. There will likely be a quick decline in the number of LTCF outbreaks due to new outbreak guidelines decreasing the time to declare an outbreak over from 28 days with no new cases to 14 days. LTCF Outbreaks will be monitored to see if this increase is transient or if this is the start of a trend.

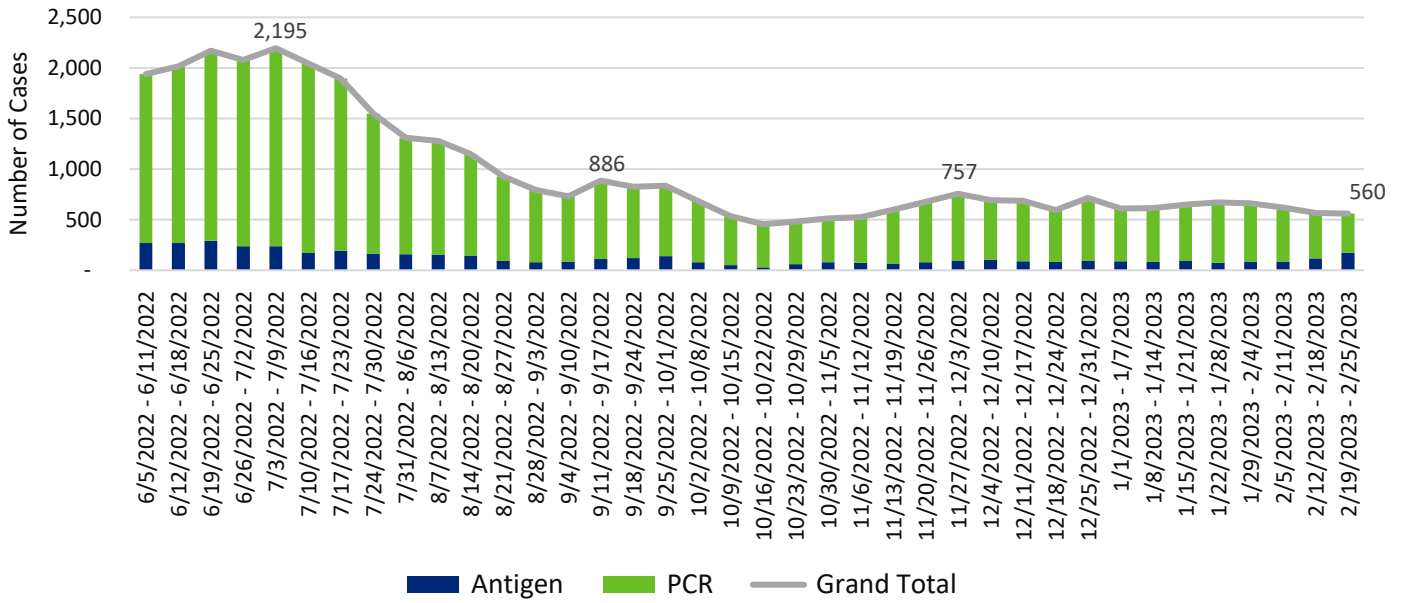
Snohomish County COVID-19 Weekly Case Rates per 100,000 by Symptom Onset Date



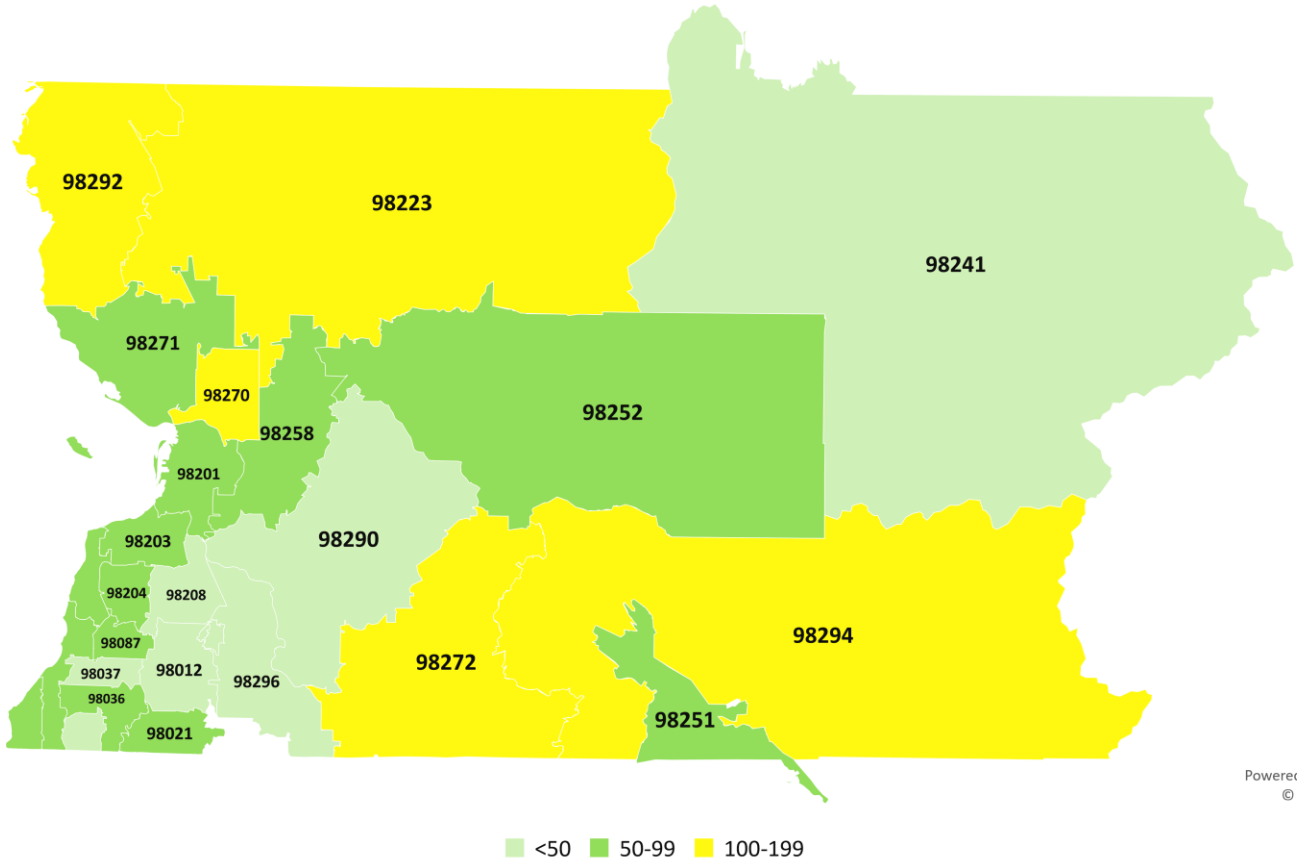
Weekly COVID-19 Graphs

June 5, 2022 – February 25, 2023

Snohomish County COVID-19 Cases by Onset Date



Snohomish County COVID-19 Case Rates per 100,000 by Zip Code February 19-25, 2023

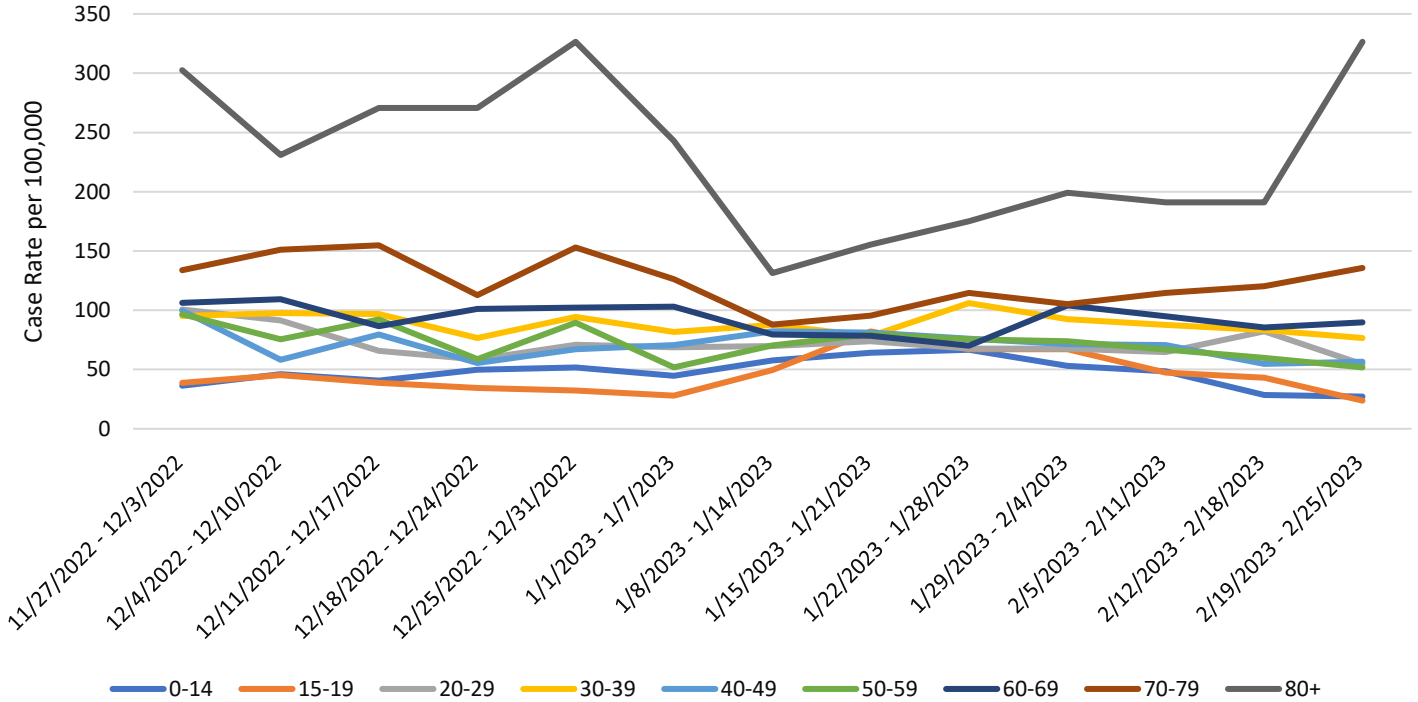


Powered by Bing
© TomTom

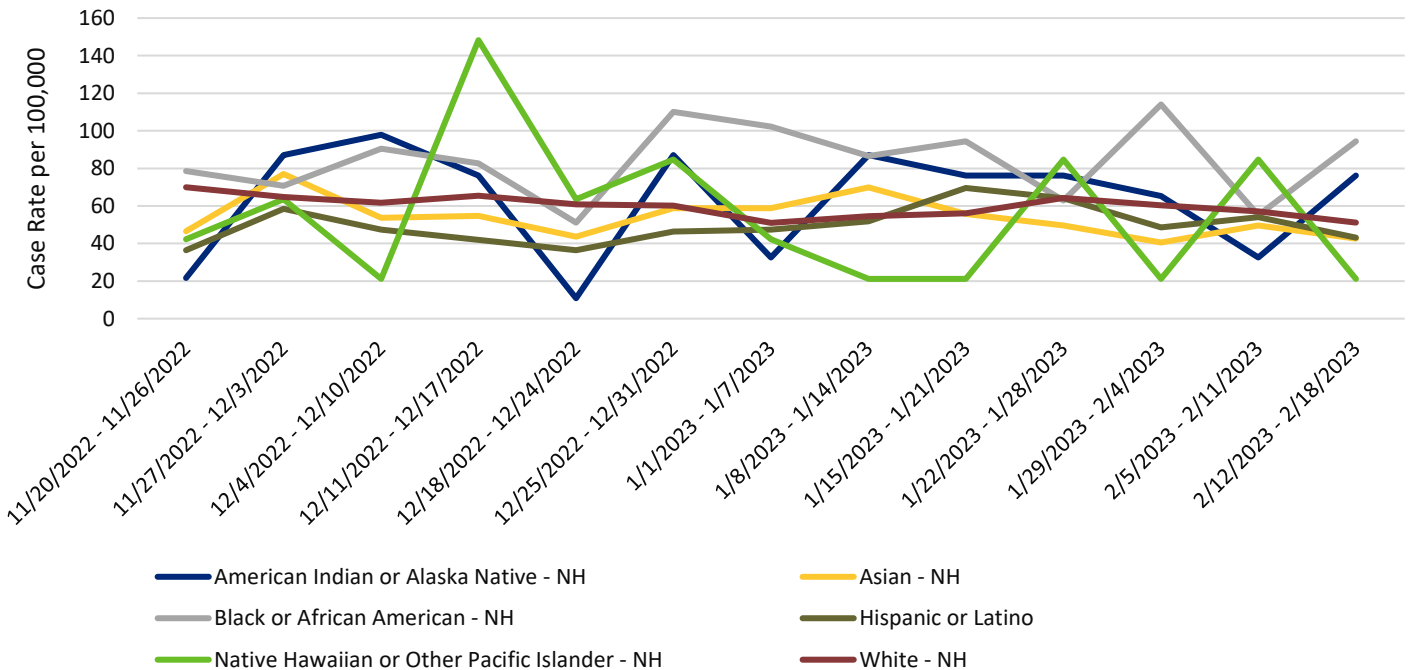
Weekly COVID-19 Graphs

June 5, 2022 – February 25, 2023

Snohomish County COVID-19 Case Rates per 100,000 by Illness Onset Date and Age Group



Snohomish County COVID-19 Case Rates per 100,000 by Illness Onset Date and Race/Ethnicity

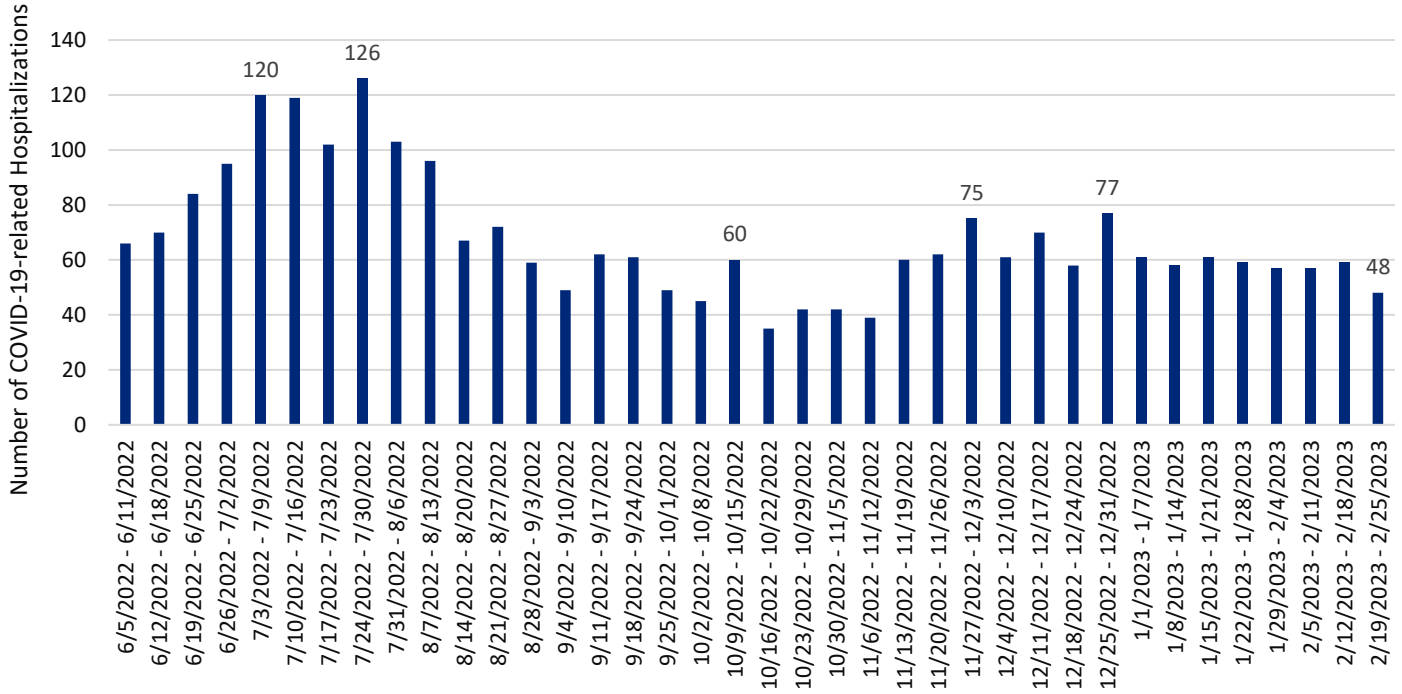


Weekly COVID-19 Graphs

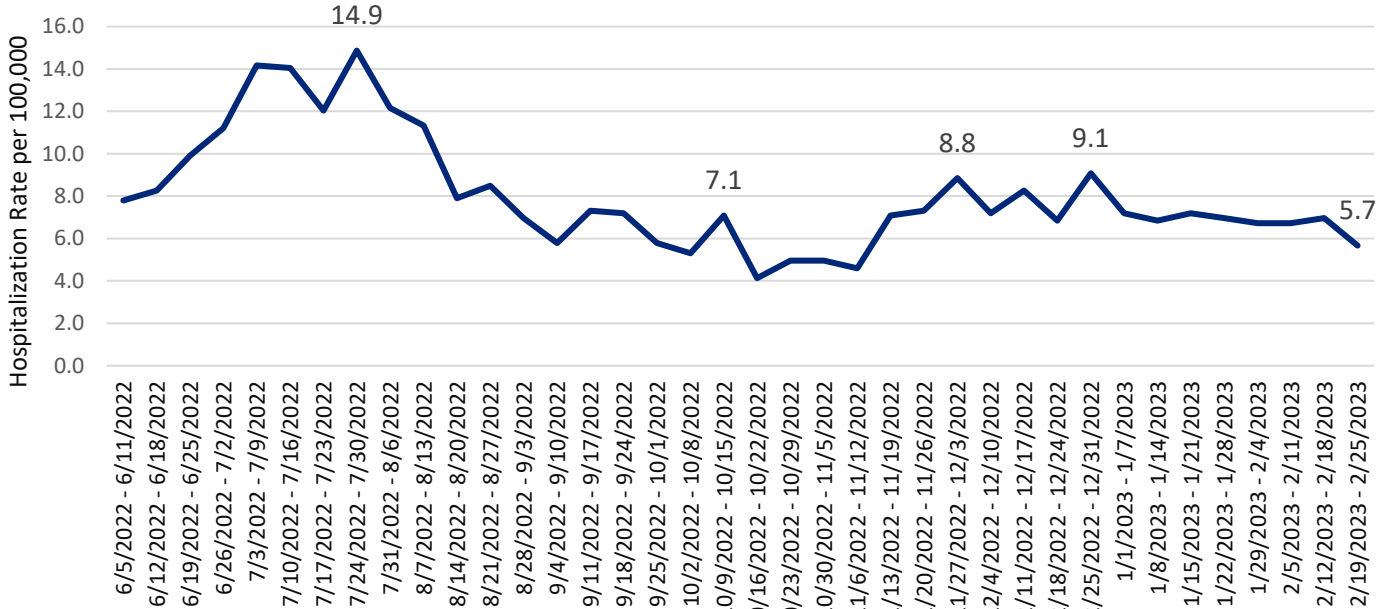
June 5, 2022 – February 25, 2023

HOSPITALIZATIONS:

Snohomish County COVID-related Hospitalizations by Week of Illness Onset



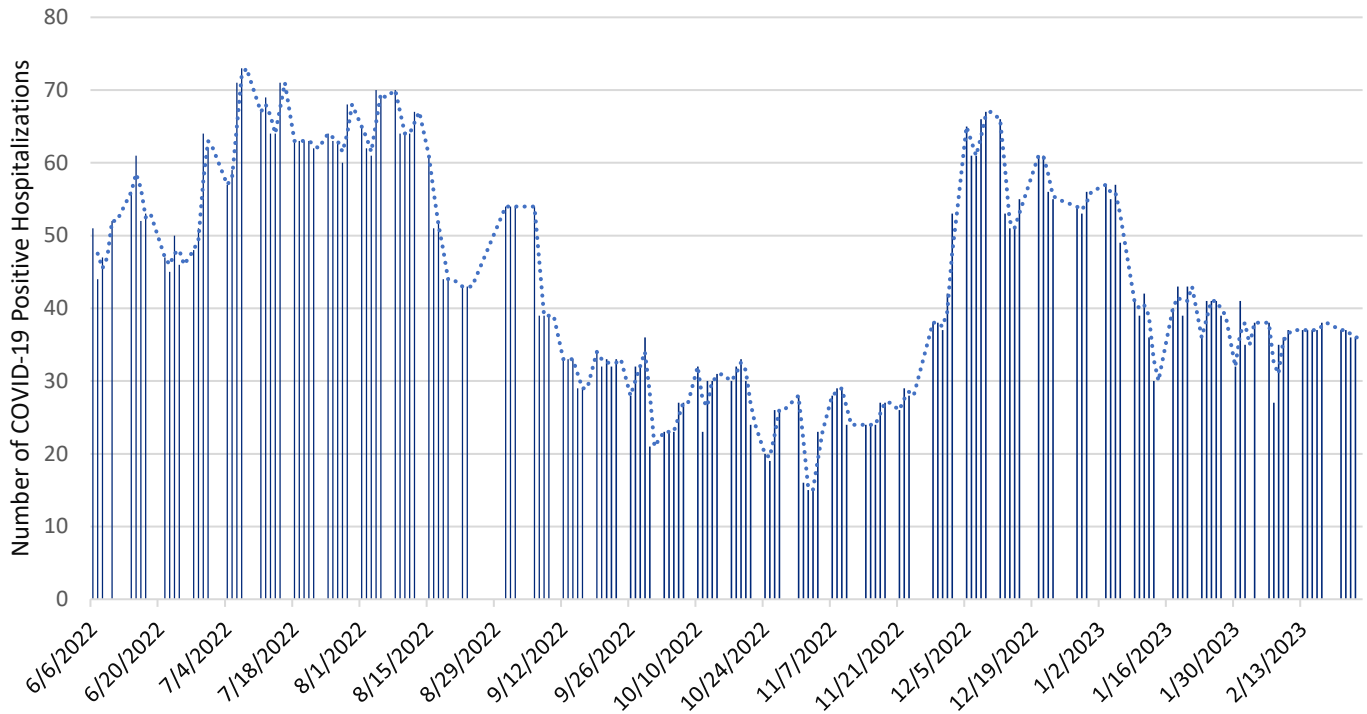
Snohomish County COVID-19 Hospitalization Case Rate per 100,000 by Week of Illness Onset



Weekly COVID-19 Graphs

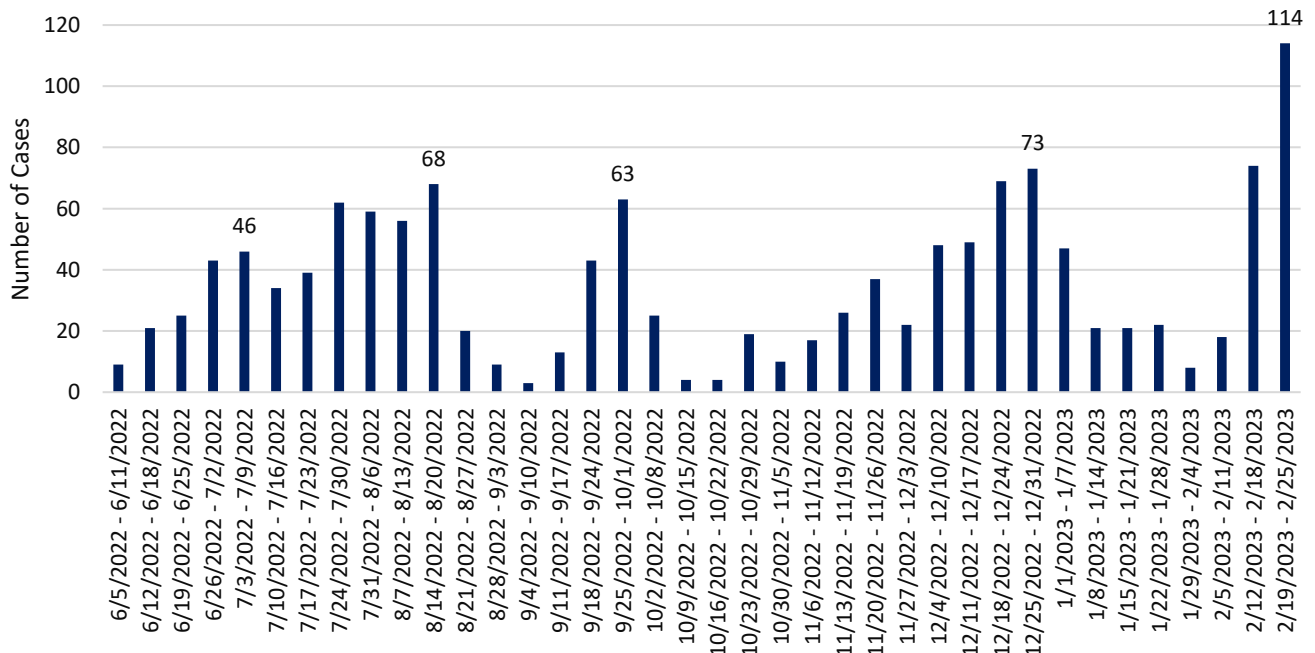
June 5, 2022 – February 25, 2023

Snohomish County Point-in-Time COVID-19 Hospital Census



*Data source: WA Health (wahealth.doh.wa.gov)

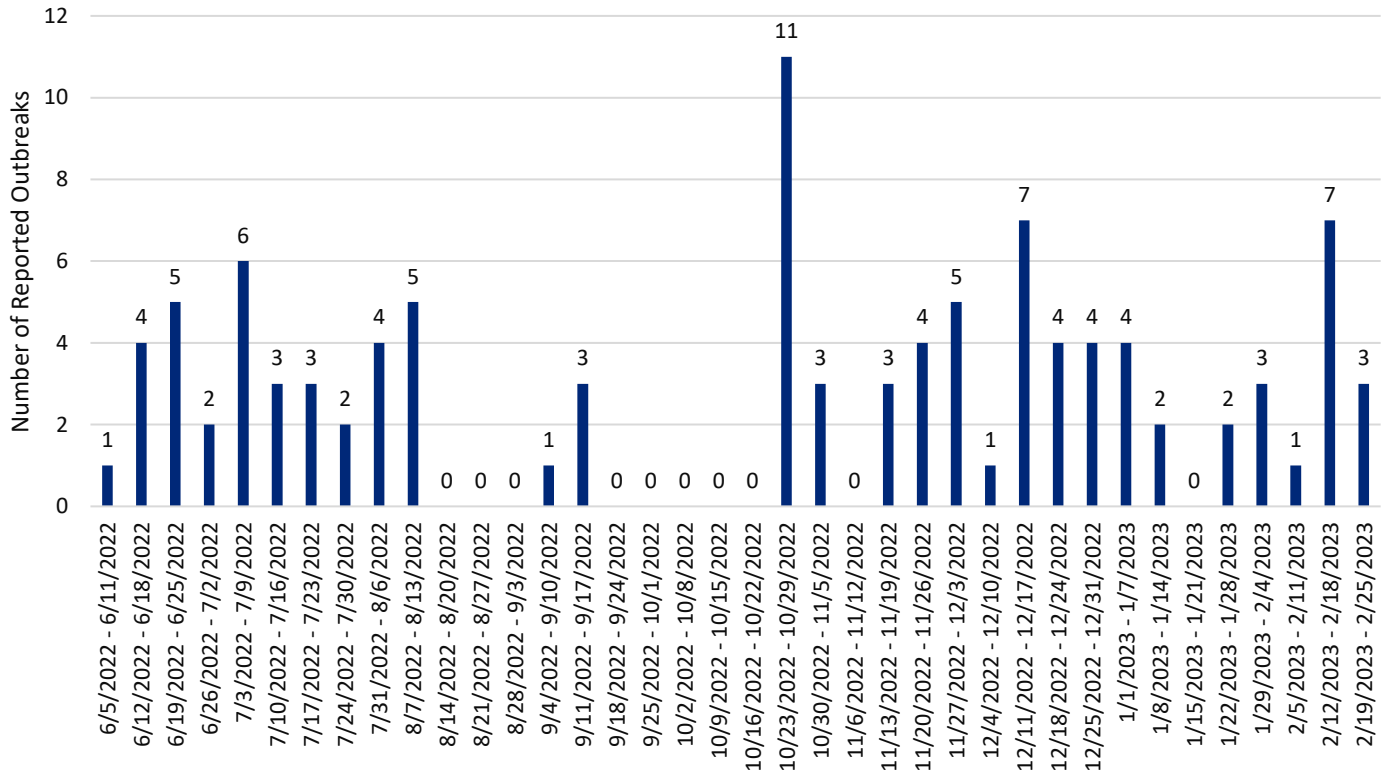
Snohomish County Long-term Care Facility Outbreak Associated COVID-19 Cases by Onset Date



Weekly COVID-19 Graphs

June 5, 2022 – February 25, 2023

Snohomish County Long-term Care Facility & Adult Family Home COVID-19 Outbreaks by Date of Outbreak Notification



New Cases (per 100,000 population in the last 7 days)	Indicators	Low	Medium	High
Fewer than 200 66	New COVID-19 admissions per 100,000 population (7-day total) 5.7	<10.0	10.0-19.9	≥20.0
	Percent of staffed inpatient beds occupied by COVID-19 patients (7-day average) 6%	<10.0%	10.0-14.9%	≥15%
200 or more	New COVID-19 admissions per 100,000 population (7-day total)	NA	<10.0	≥10.0
	Percent of staffed inpatient beds occupied by COVID-19 patients (7-day average)	NA	<10%	≥10.0%

Additional Resources:

- Washington State Department of Health COVID-19 Data Dashboard: <https://doh.wa.gov/emergencies/covid-19/data-dashboard>