

# Weekly COVID-19 Graphs

June 5, 2022 – February 18, 2023

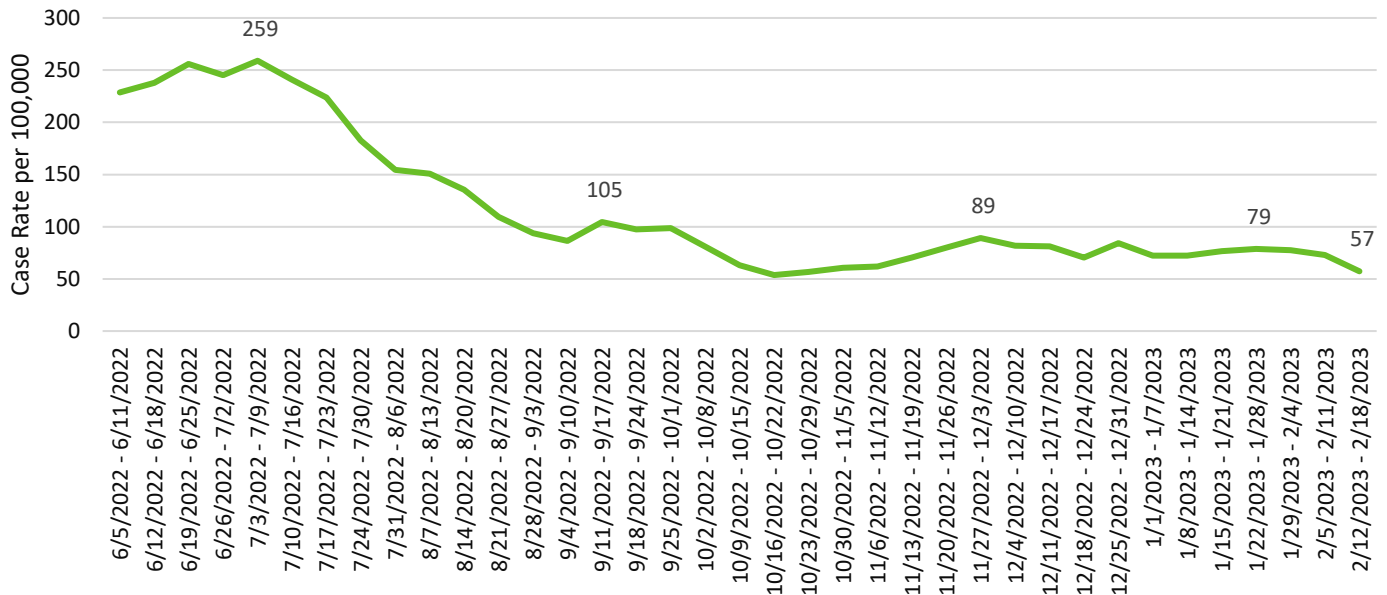
## CASE DATA:

The Washington State Disease Reporting System (WDRS) is the data source for all case data. Some data have been suppressed due to inaccuracies. Not all tables and graphs will have the same denominator. All trend data are by symptom onset date or date of first positive COVID test. All data are preliminary and subject to change.

## SNOHOMSH COUNTY SUMMARY:

- Snohomish County is currently in the low-risk transmission category.
- Our case rate trend has remained steady since the beginning of December 2022. There was a slight dip in case rates this week, but that may be an artifact of the holiday week and processing of labs through the electronic lab reporting system.
- COVID-19-related hospitalizations have been relatively stable at around 50-60 hospitalizations per week since early January 2023.
- Higher rates of COVID-19 transmission were seen in the central (Everett) and rural east part of the county.
- Highest case-rates are amongst our 70+ population, which is due to higher rates of testing, and small population size. Case rates slightly decreased for all age groups, except for 20–29-year-olds which saw a slight uptick.
- Case rates increased amongst our Black/African American population. This may be due to the small population size in Snohomish County and will be monitored. All other race/ethnicities saw a decrease in case rates in the last week.
- Cases associated with reported LTCF outbreaks increased substantially from 18 to 59 cases. This is due to an increase in reported outbreaks last week (6 new outbreaks compared to 1 the previous week). Of note, over the preceding 5 weeks there were 0-3 new outbreaks reported weekly. There will likely be a quick decline in the number of LTCF outbreaks due to new outbreak guidelines decreasing the time to declare an outbreak over from 28 days with no new cases to 14 days. LTCF Outbreaks will be monitored to see if this increase is transient or if this is the start of a trend.

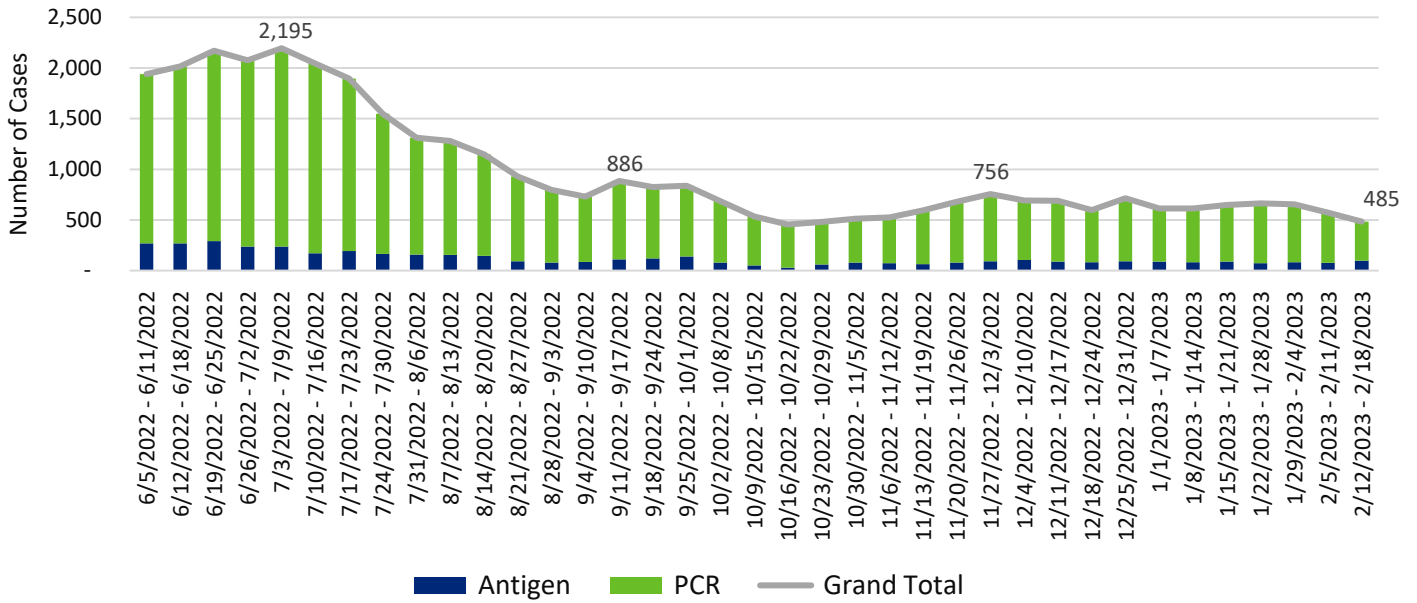
**Snohomish County COVID-19 Weekly Case Rates per 100,000 by Symptom Onset Date**



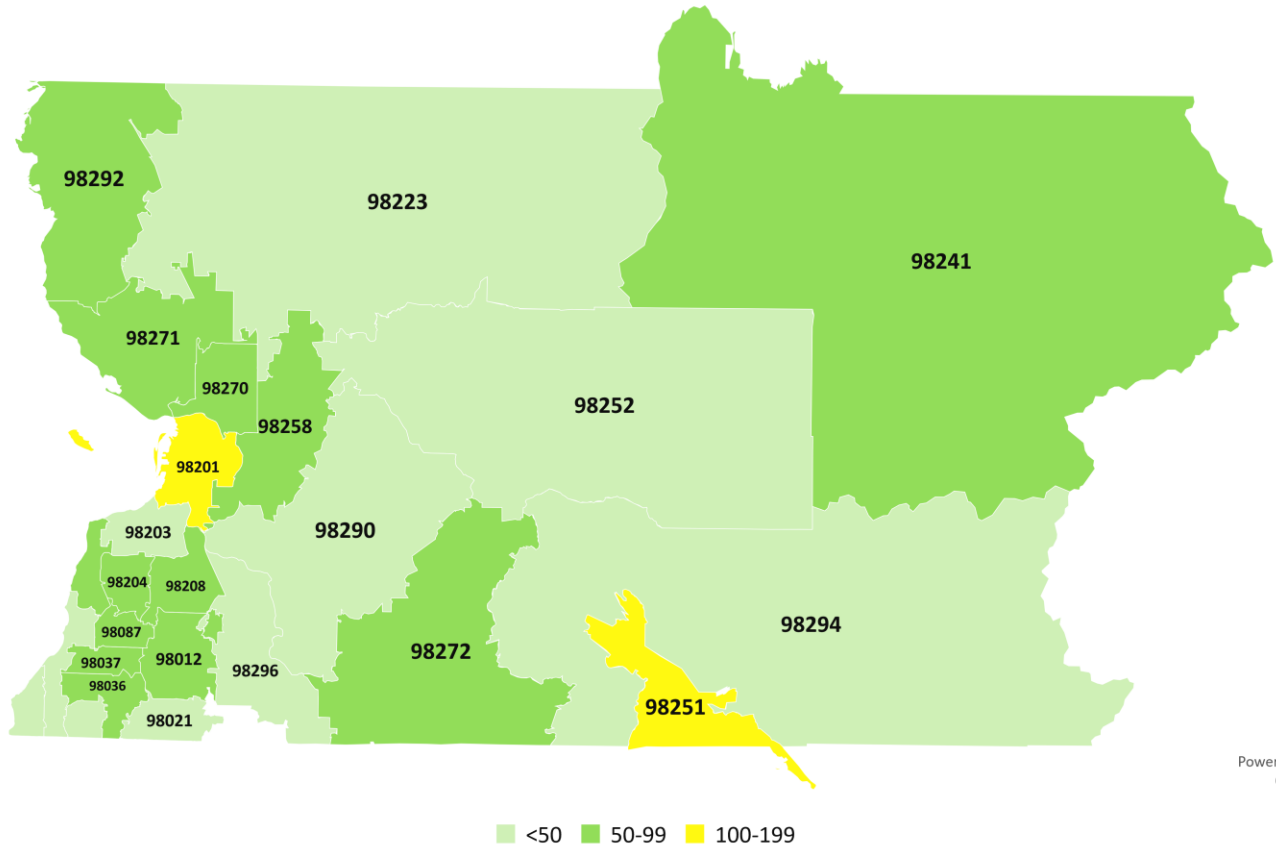
# Weekly COVID-19 Graphs

June 5, 2022 – February 18, 2023

## Snohomish County COVID-19 Cases by Onset Date



## Snohomish County COVID-19 Case Rates per 100,000 by Zip Code February 12-18, 2023

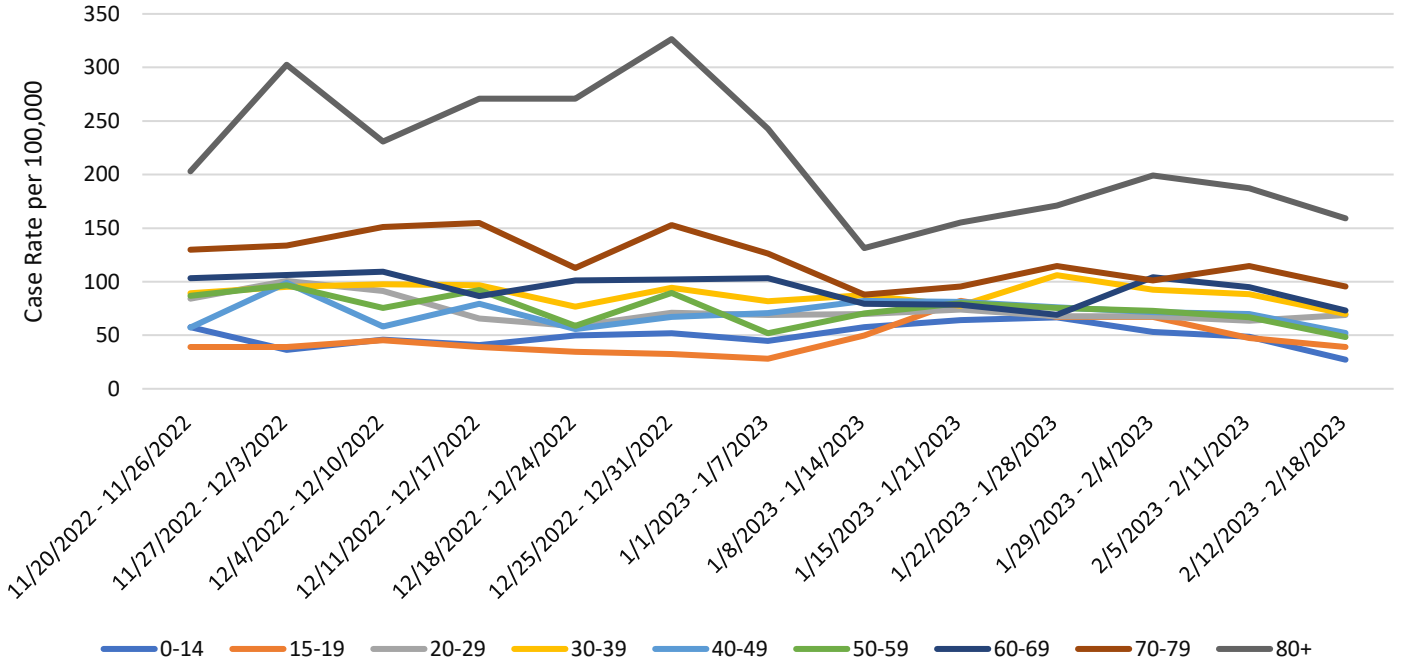


Powered by Bing  
© TomTom

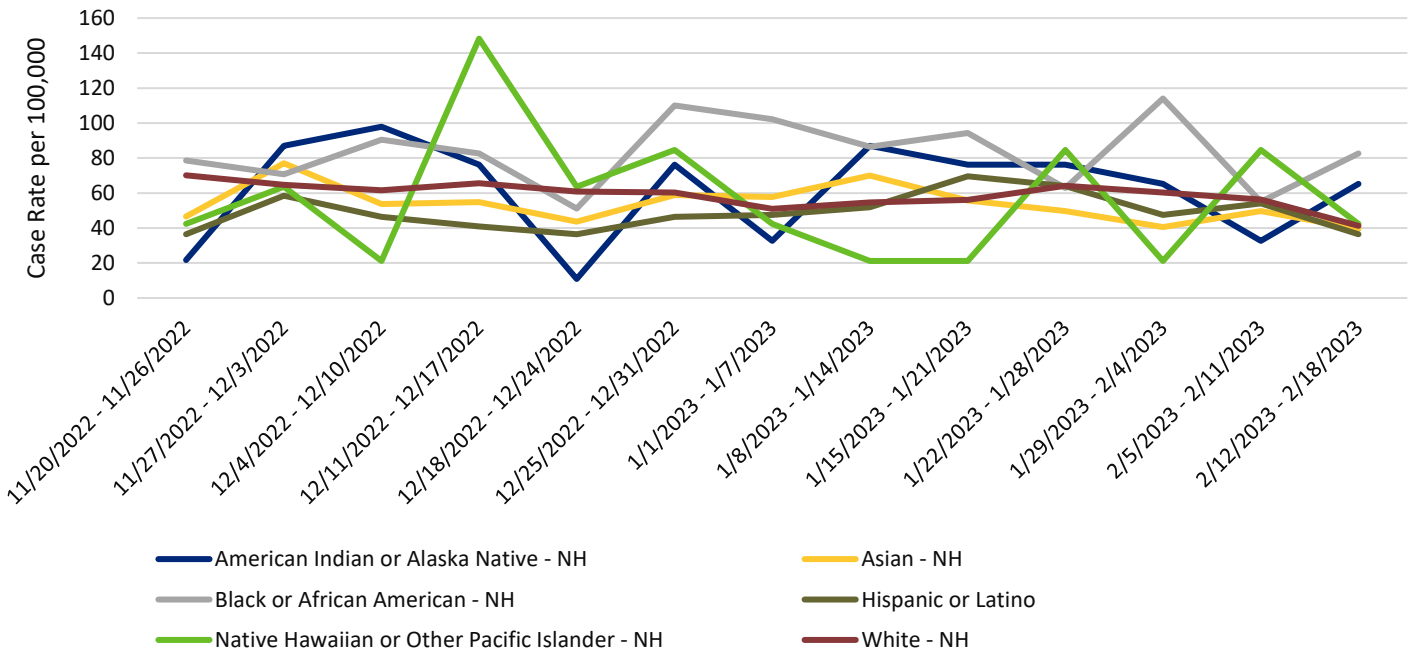
# Weekly COVID-19 Graphs

June 5, 2022 – February 18, 2023

## Snohomish County COVID-19 Case Rates per 100,000 by Illness Onset Date and Age Group



## Snohomish County COVID-19 Case Rates per 100,000 by Illness Onset Date and Race/Ethnicity

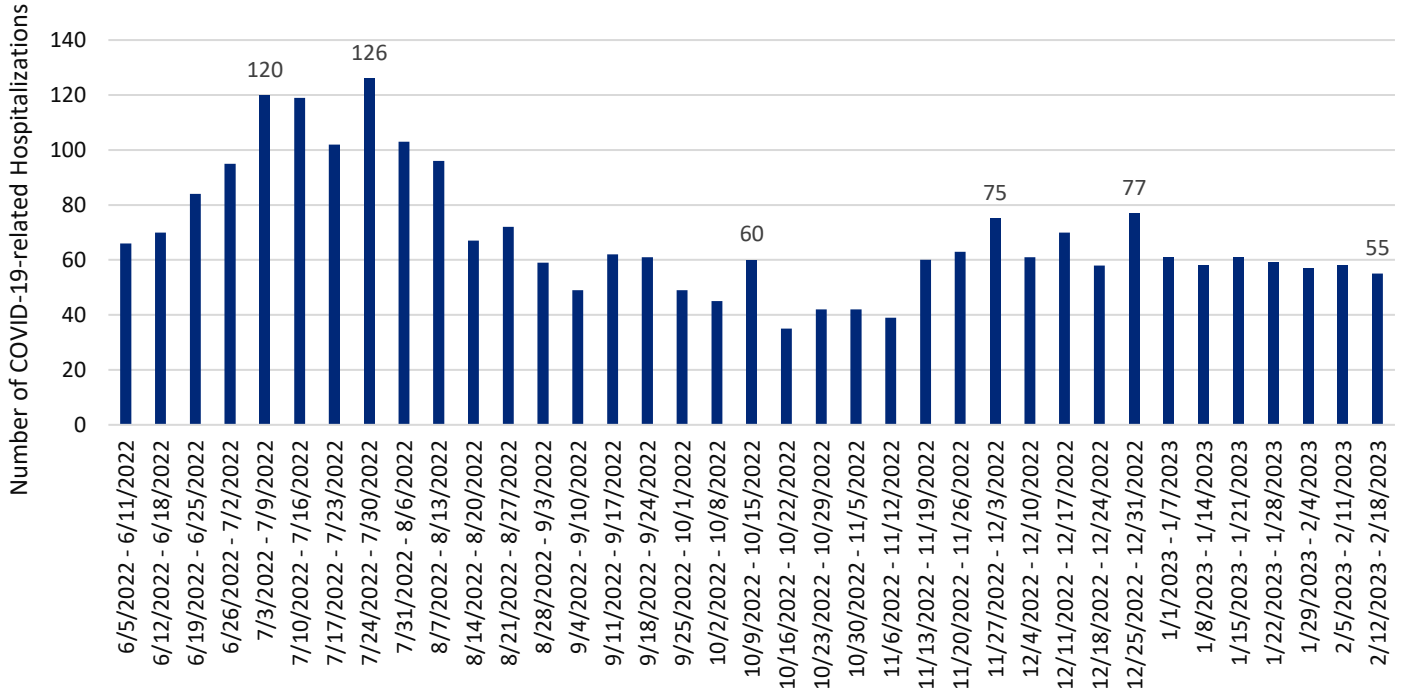


# Weekly COVID-19 Graphs

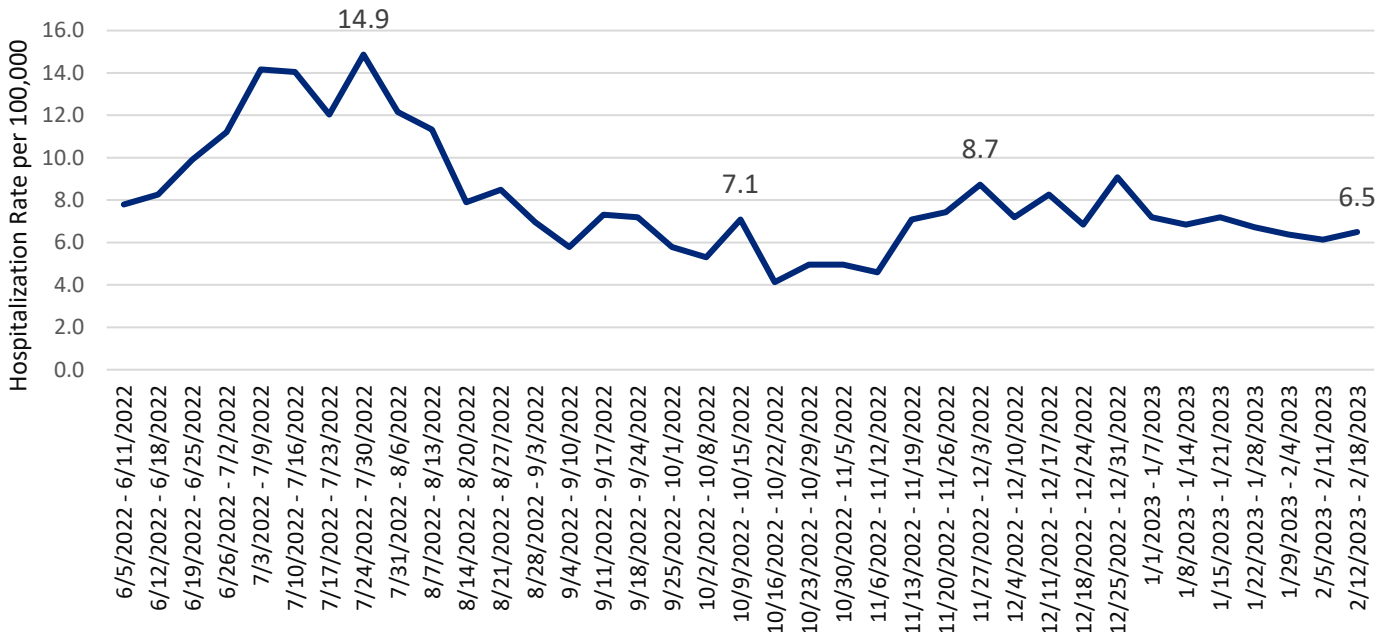
June 5, 2022 – February 18, 2023

## HOSPITALIZATIONS:

### Snohomish County COVID-related Hospitalizations by Week of Illness Onset



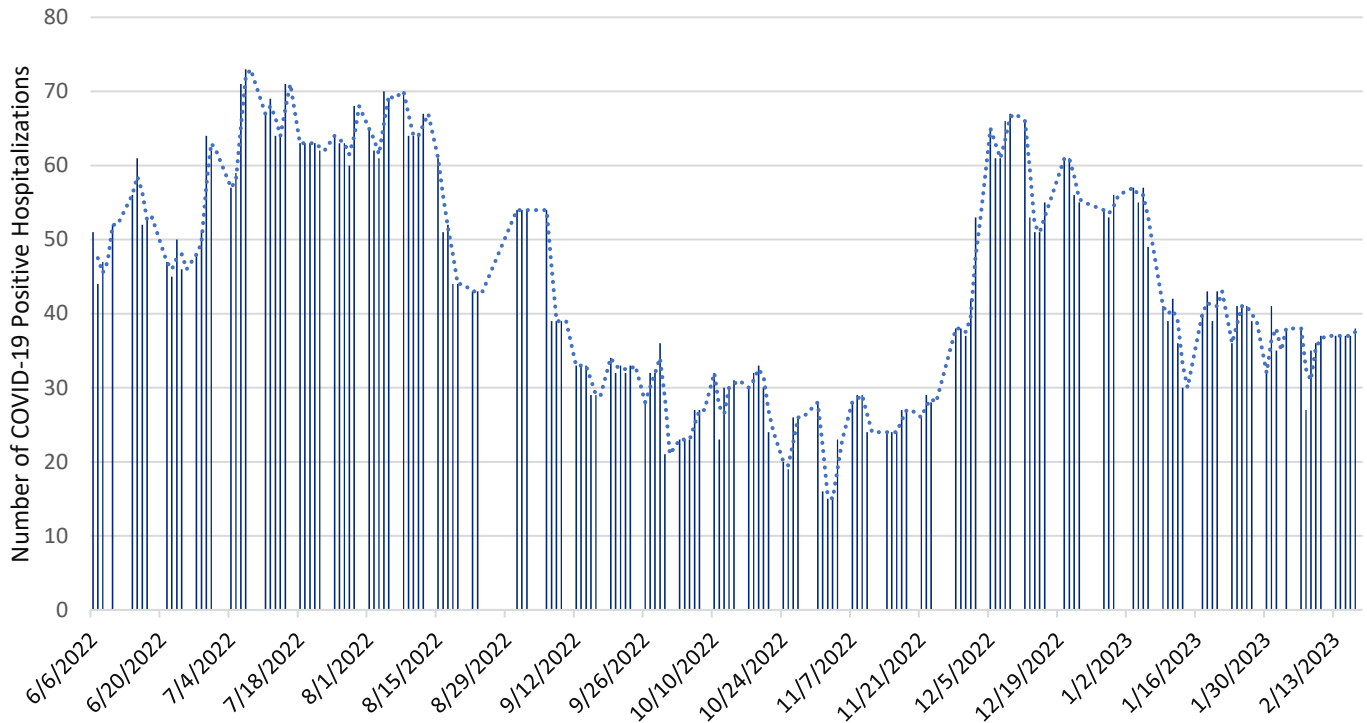
### Snohomish County COVID-19 Hospitalization Case Rate per 100,000 by Week of Illness Onset



# Weekly COVID-19 Graphs

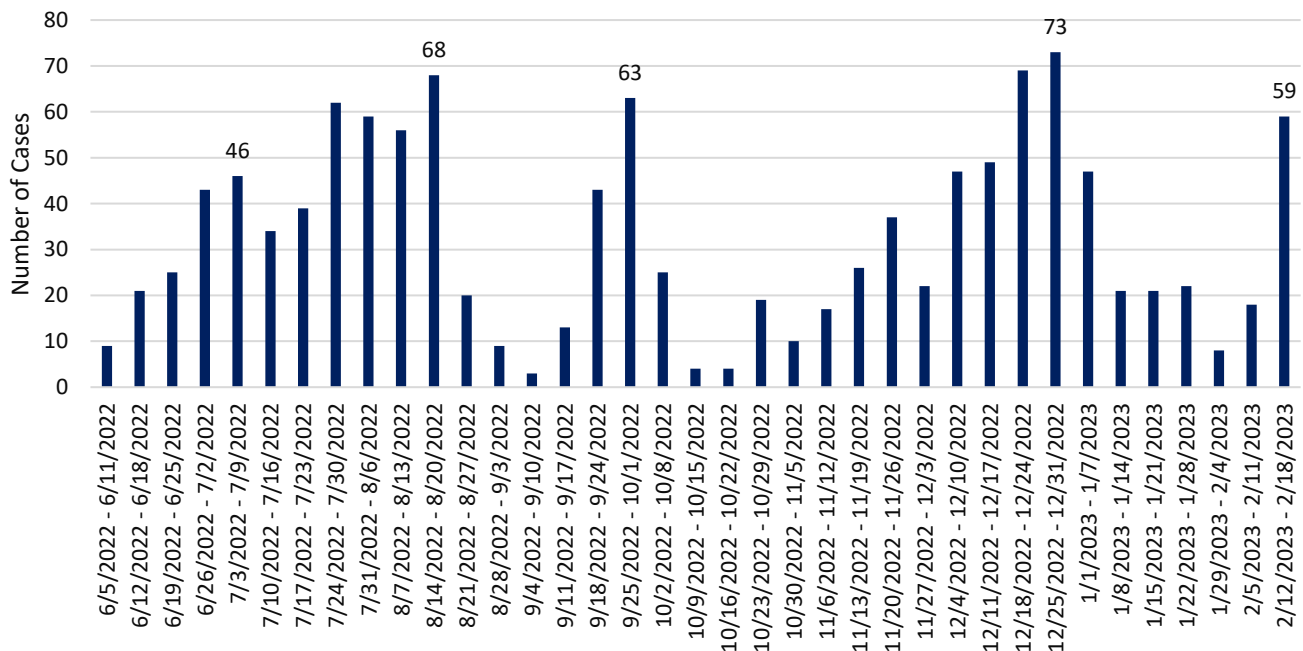
June 5, 2022 – February 18, 2023

## Snohomish County Point-in-Time COVID-19 Hospital Census



\*Data source: WA Health (wahealth.doh.wa.gov)

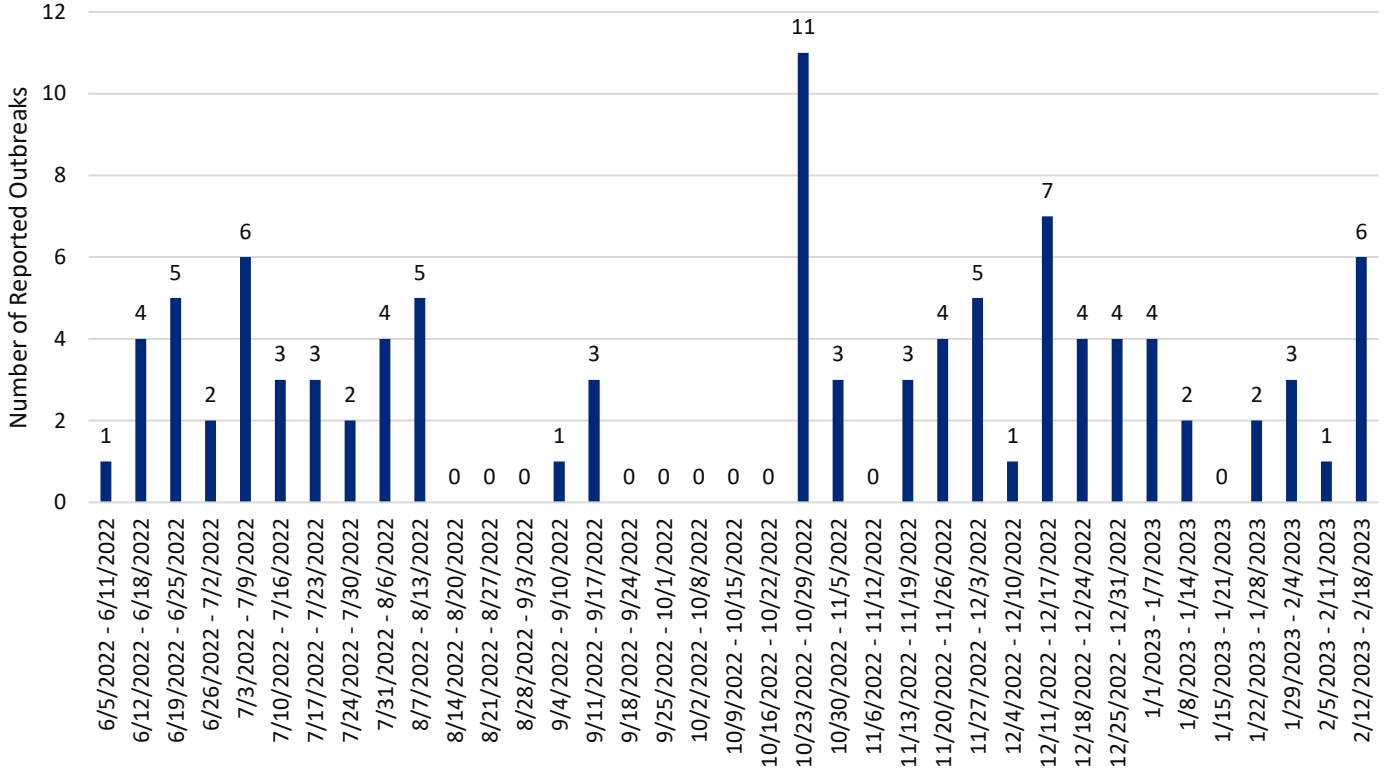
## Snohomish County Long-term Care Facility Outbreak Associated COVID-19 Cases by Onset Date



## Weekly COVID-19 Graphs

June 5, 2022 – February 18, 2023

### Snohomish County Long-term Care Facility & Adult Family Home COVID-19 Outbreaks by Date of Outbreak Notification



New Cases (per 100,000 population in the last 7 days)	Indicators	Low	Medium	High
<b>Fewer than 200</b> <b>57</b>	New COVID-19 admissions per 100,000 population (7-day total) <b>6.5</b>	<10.0	10.0-19.9	≥20.0
	Percent of staffed inpatient beds occupied by COVID-19 patients (7-day average) <b>6%</b>	<10.0%	10.0-14.9%	≥15%
<b>200 or more</b>	New COVID-19 admissions per 100,000 population (7-day total)	NA	<10.0	≥10.0
	Percent of staffed inpatient beds occupied by COVID-19 patients (7-day average)	NA	<10%	≥10.0%

**Additional Resources:**

- Washington State Department of Health COVID-19 Data Dashboard: <https://doh.wa.gov/emergencies/covid-19/data-dashboard>