

# Weekly COVID-19 Graphs

June 5, 2022 – February 11, 2023

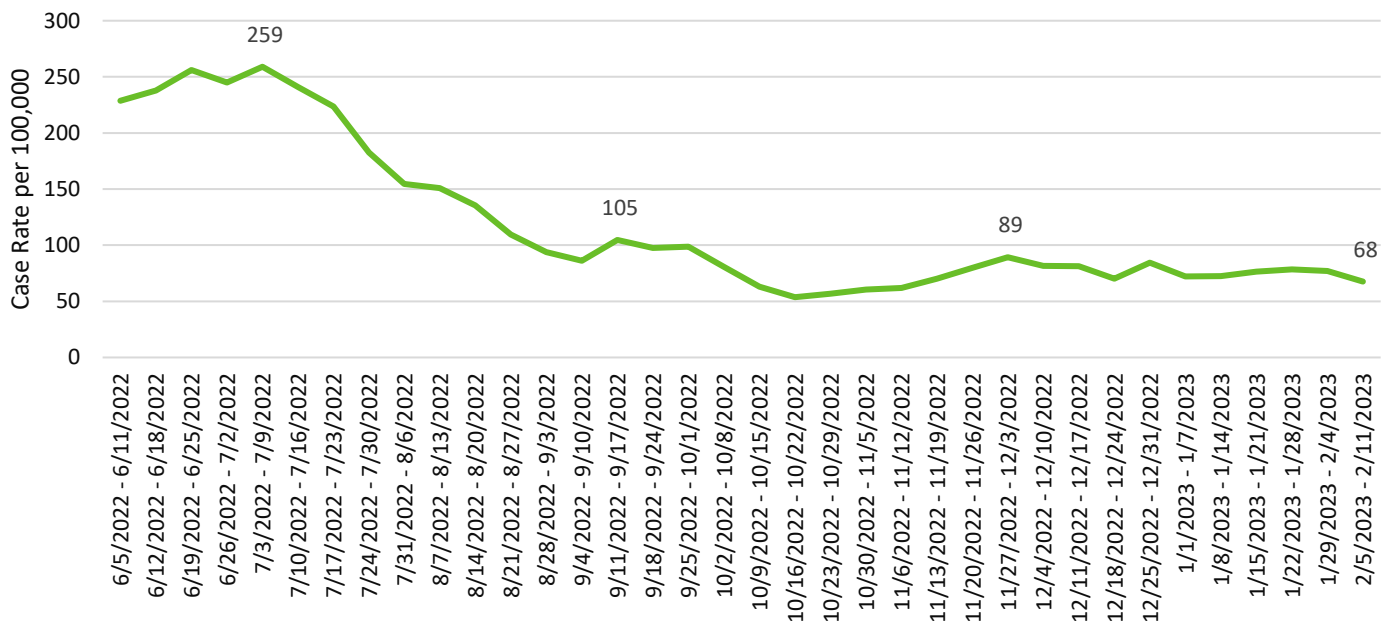
## CASE DATA:

The Washington State Disease Reporting System (WDRS) is the data source for all case data. Some data have been suppressed due to inaccuracies. Not all tables and graphs will have the same denominator. All trend data are by symptom onset date or date of first positive COVID test. All data are preliminary and subject to change.

## SNOHOMSH COUNTY SUMMARY:

- Snohomish County is currently in the low-risk transmission category.
- Our case rate trend has remained steady since the beginning of December 2022.
- COVID-19-related hospitalizations have been relatively stable at around 50-60 hospitalizations per week since early January 2023.
- Higher rates of COVID-19 transmission were seen in the southwest (Mountlake Terrace) and central (Everett) part of the county.
- Case rates slightly decreased for all other age groups. Highest case-rates are amongst our 70+ population, which is due to higher rates of testing, and small population size.
- Case rates increased amongst our Native Hawaiian/Pacific Islander and Asian populations. The uptick in rates amongst Native Hawaiian/Pacific Islanders may be due to the small population size in Snohomish County and will be monitored. All other race/ethnicities saw a decrease in case rates in the last week.
- Long-term care facility cases and outbreaks are relatively stable with a slight decrease in the number of outbreak events.

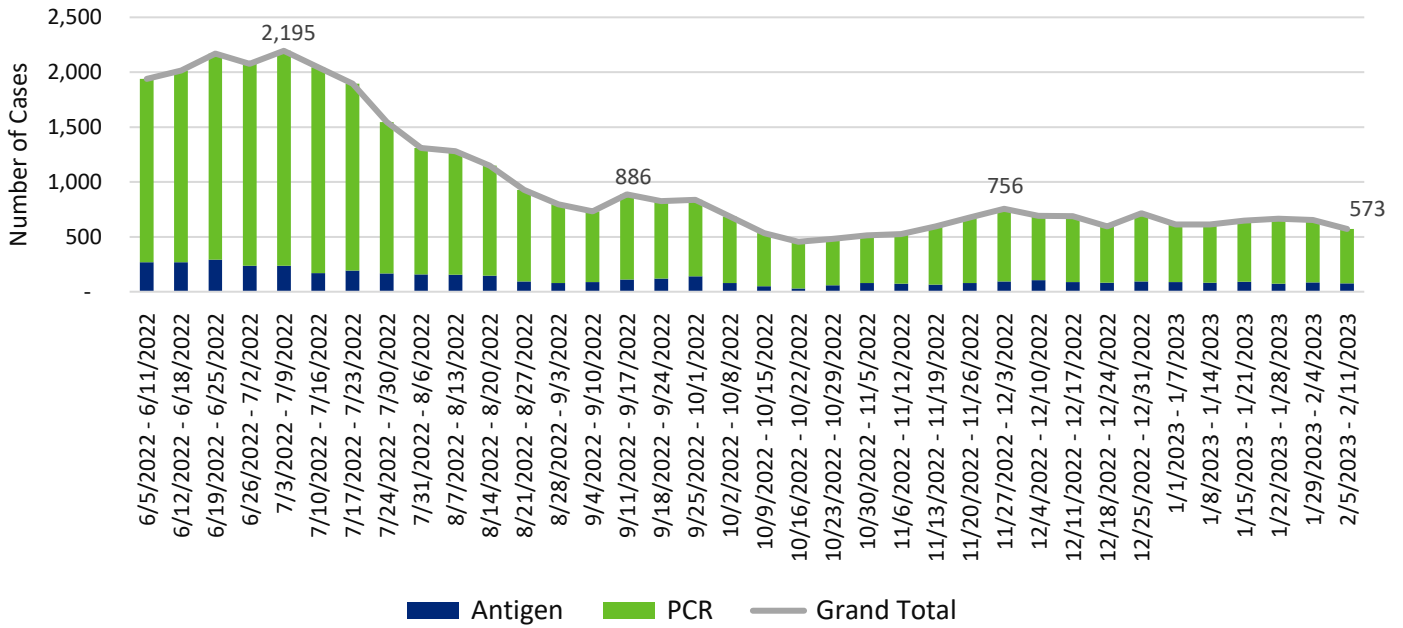
**Snohomish County COVID-19 Weekly Case Rates per 100,000 by Symptom Onset Date**



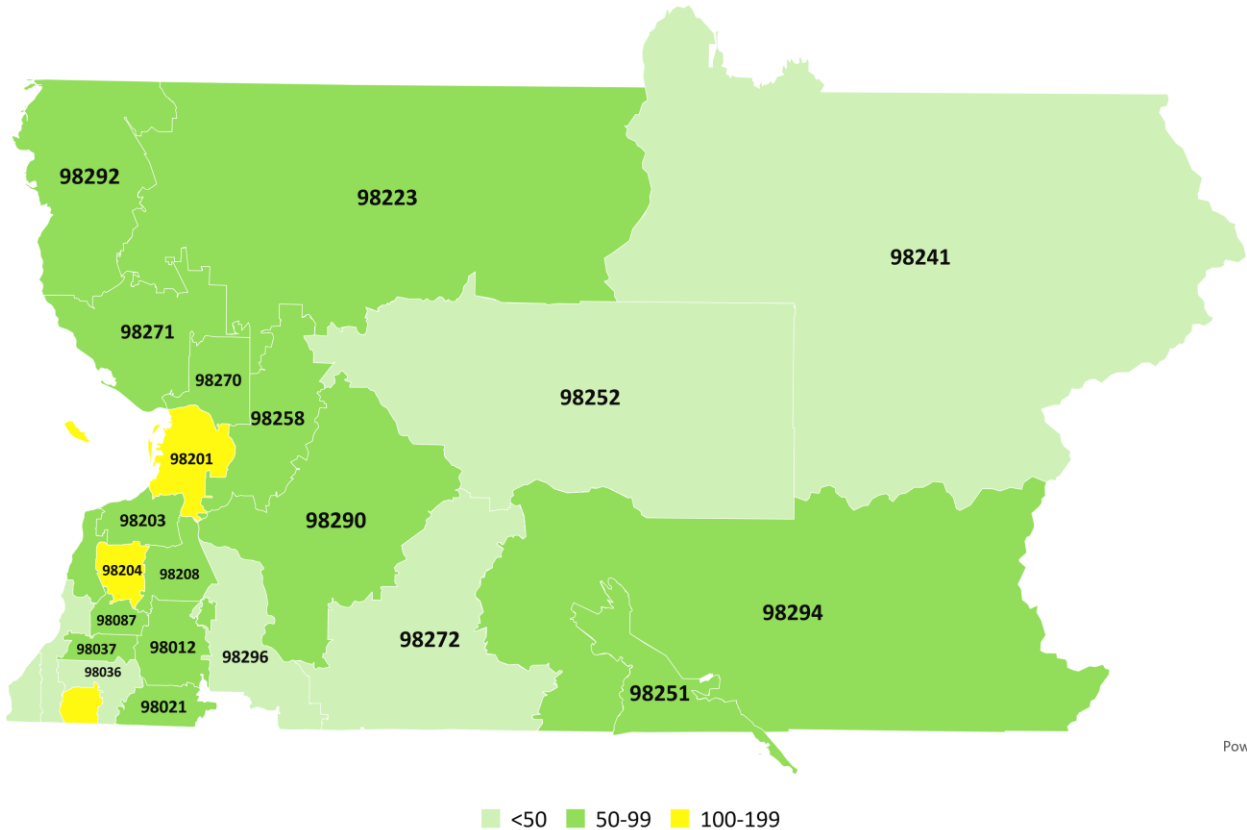
# Weekly COVID-19 Graphs

June 5, 2022 – February 11, 2023

## Snohomish County COVID-19 Cases by Onset Date



## Snohomish County COVID-19 Case Rates per 100,000 by Zip Code February 5-11, 2023

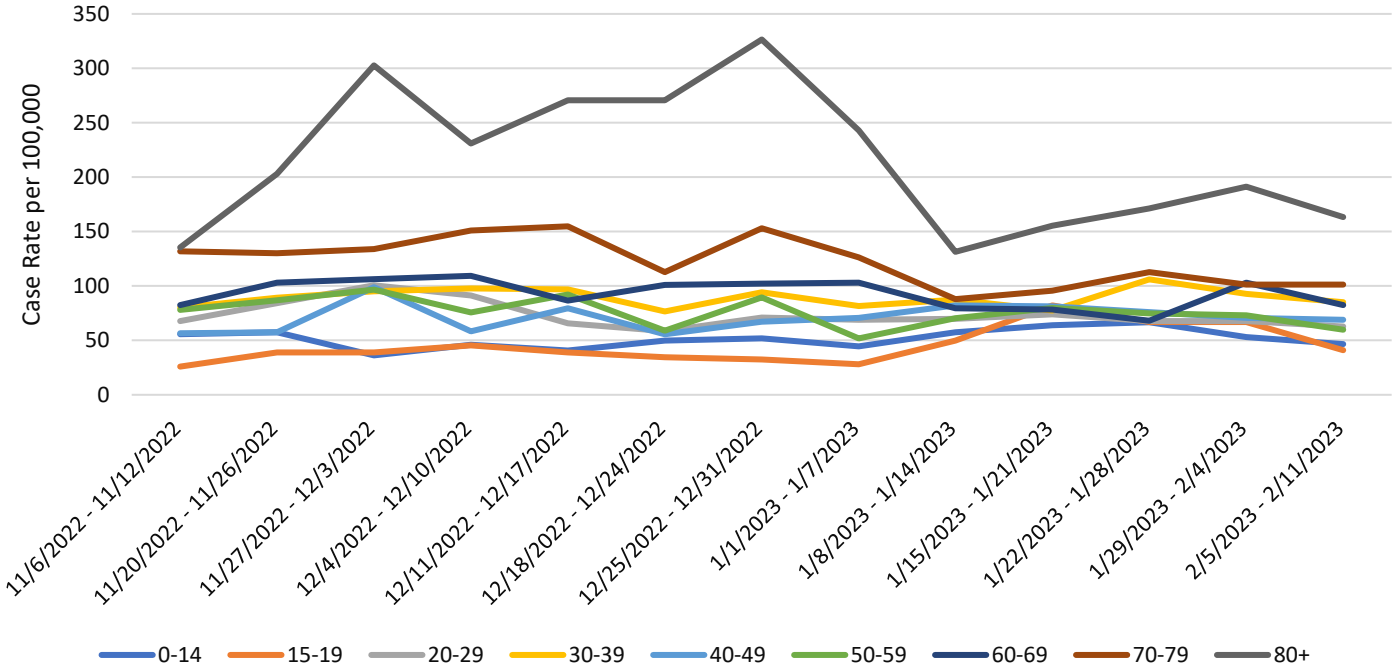


Powered by Bing  
© TomTom

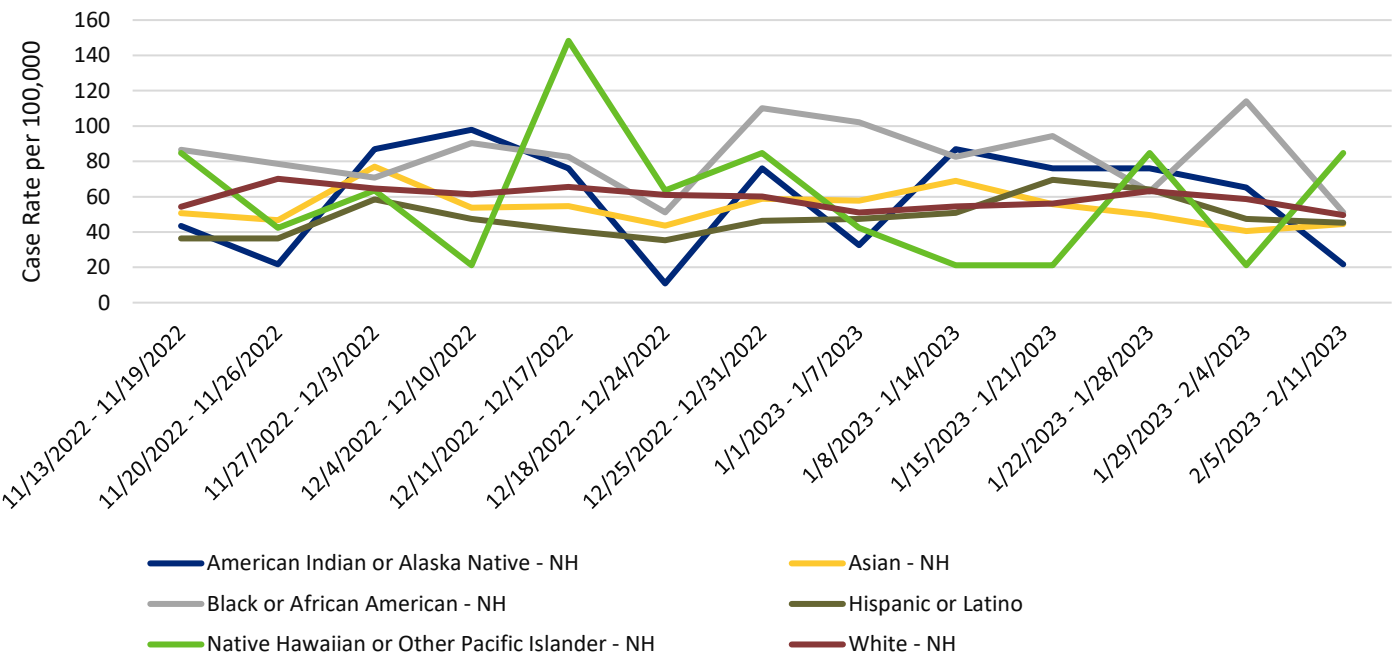
# Weekly COVID-19 Graphs

June 5, 2022 – February 11, 2023

## Snohomish County COVID-19 Case Rates per 100,000 by Illness Onset Date and Age Group



## Snohomish County COVID-19 Case Rates per 100,000 by Illness Onset Date and Race/Ethnicity



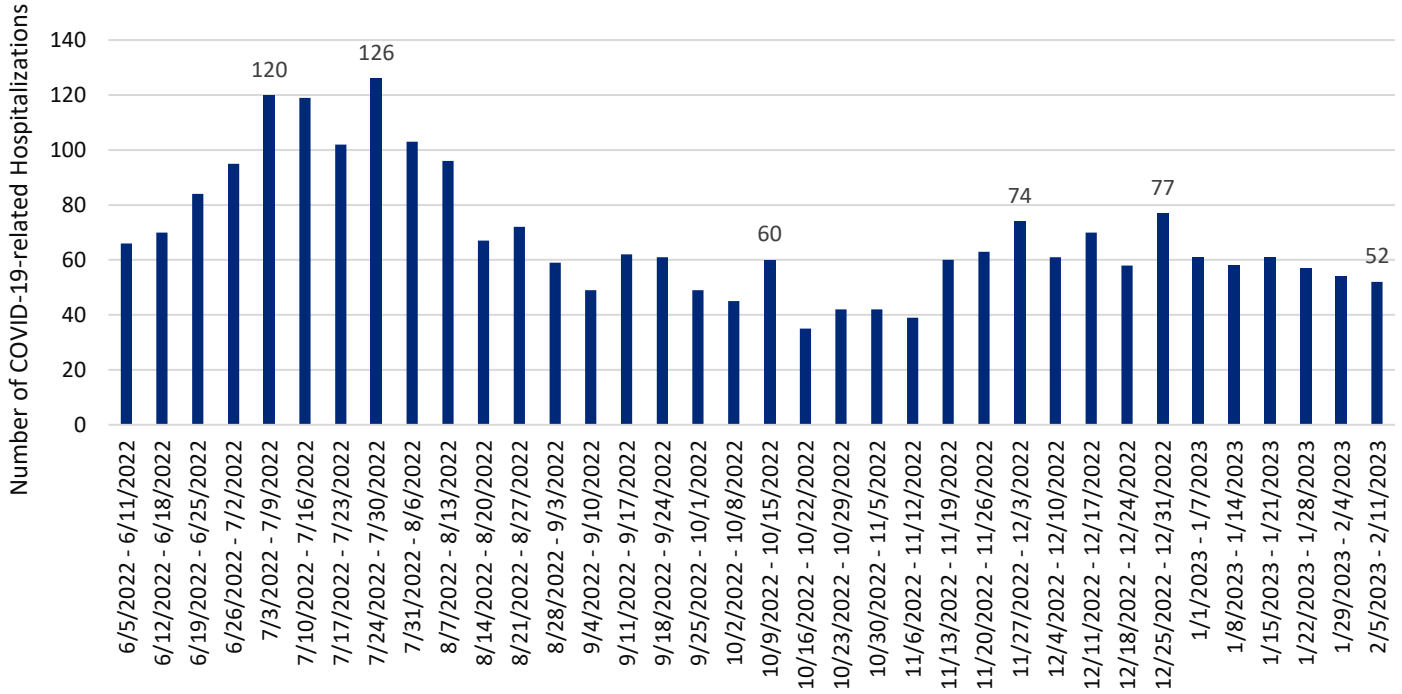
\*Note: Due to technical issues with WDRS Hispanic or Latino have not been included since mid-November

# Weekly COVID-19 Graphs

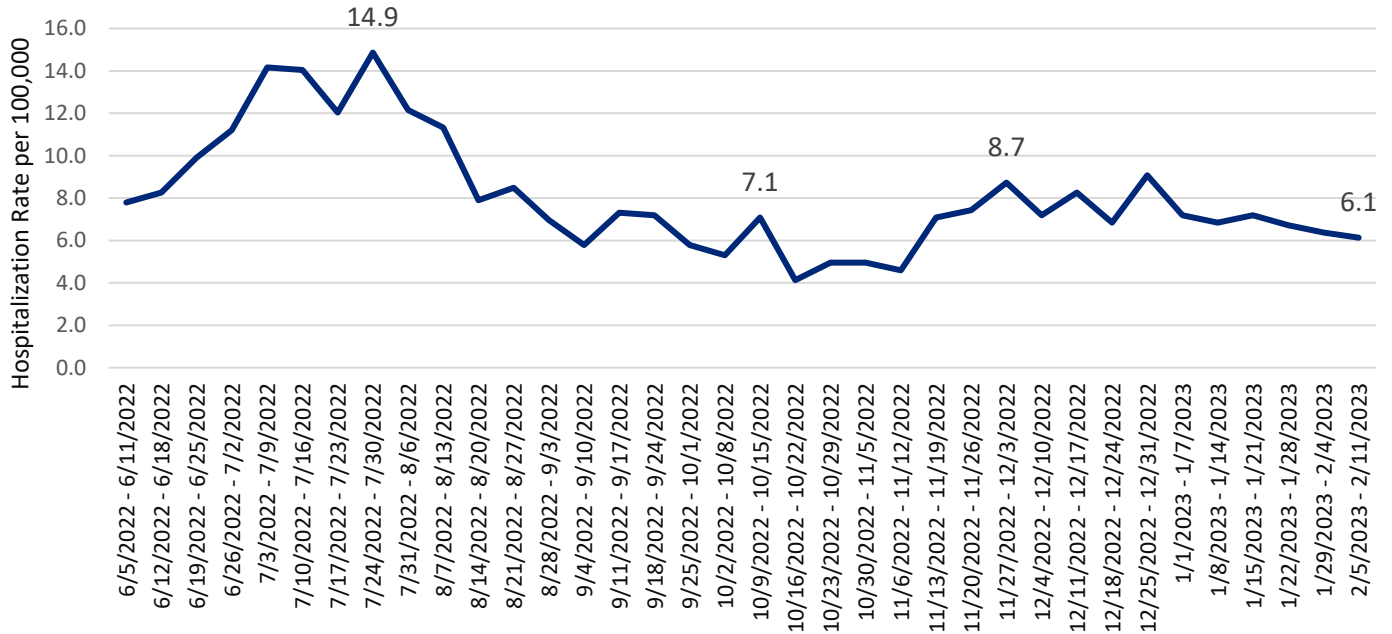
June 5, 2022 – February 11, 2023

## HOSPITALIZATIONS:

### Snohomish County COVID-related Hospitalizations by Week of Illness Onset



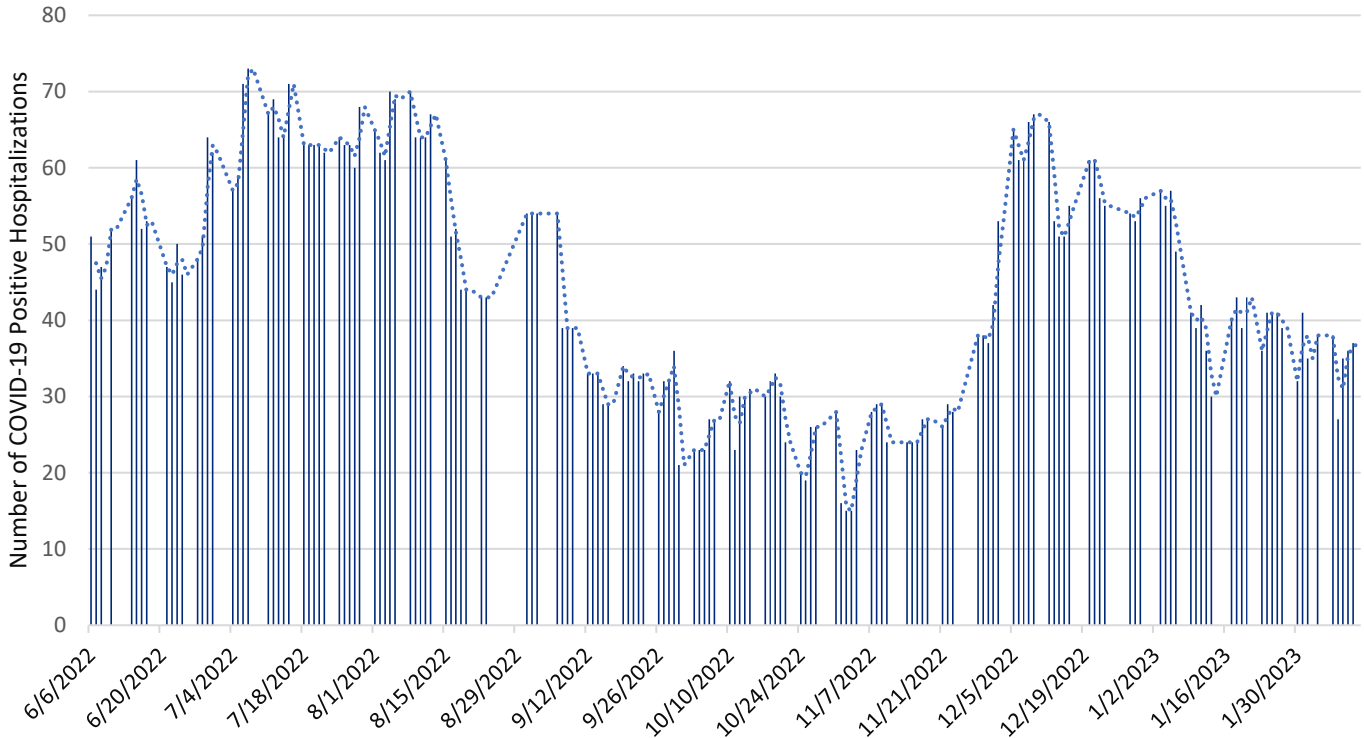
### Snohomish County COVID-19 Hospitalization Case Rate per 100,000 by Week of Illness Onset



# Weekly COVID-19 Graphs

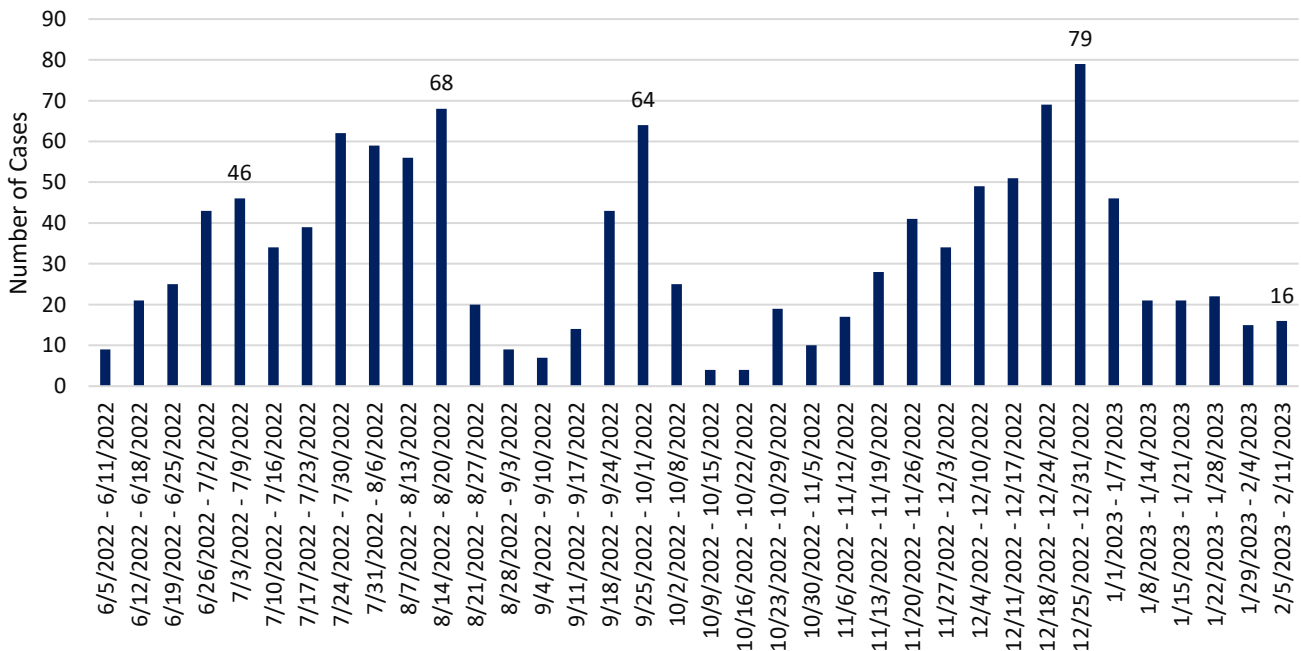
June 5, 2022 – February 11, 2023

## Snohomish County Point-in-Time COVID-19 Hospital Census



\*Data source: WA Health (wahealth.doh.wa.gov)

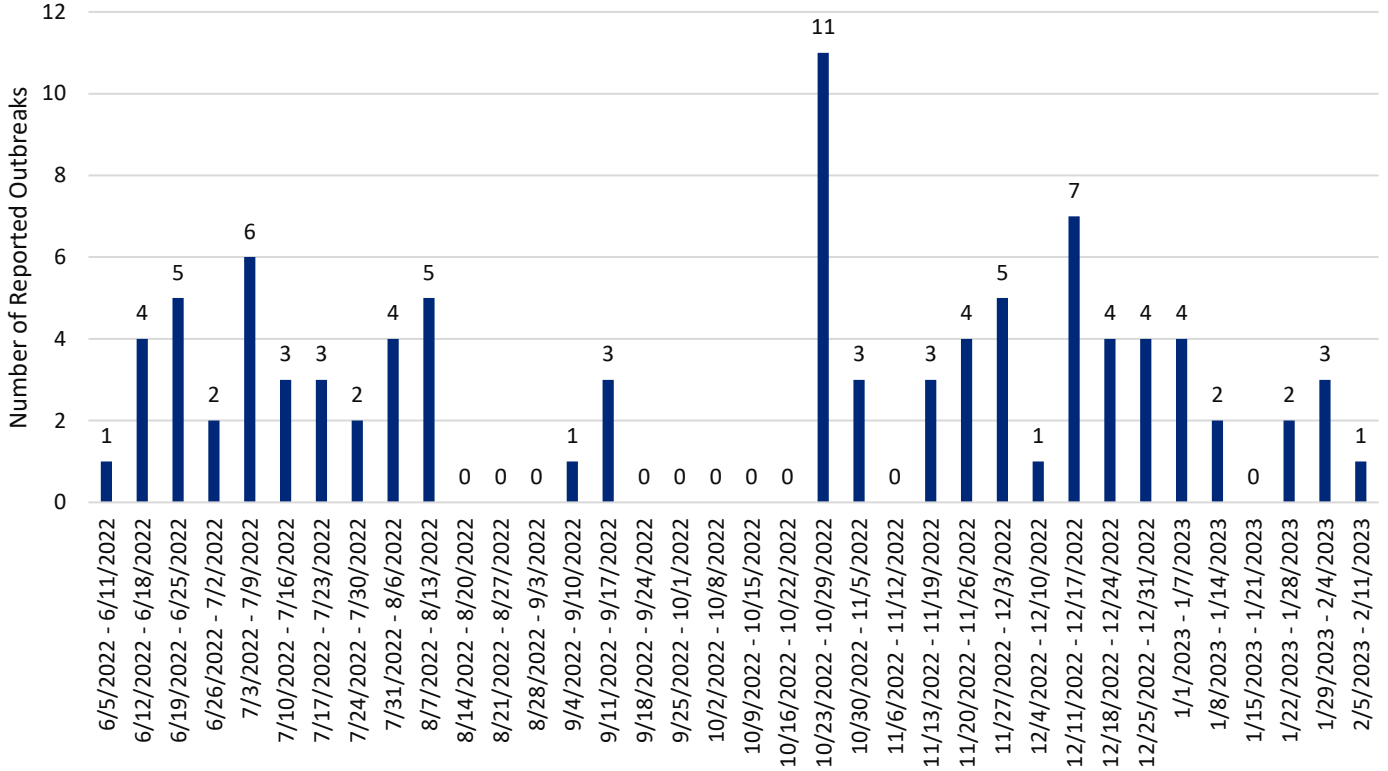
## Snohomish County Long-term Care Facility Outbreak Associated COVID-19 Cases by Onset Date



## Weekly COVID-19 Graphs

June 5, 2022 – February 11, 2023

### Snohomish County Long-term Care Facility & Adult Family Home COVID-19 Outbreaks by Date of Outbreak Notification



New Cases (per 100,000 population in the last 7 days)	Indicators	Low	Medium	High
<b>Fewer than 200</b> <b>68</b>	New COVID-19 admissions per 100,000 population (7-day total) <b>6.1</b>	<10.0	10.0-19.9	≥20.0
	Percent of staffed inpatient beds occupied by COVID-19 patients (7-day average) <b>5%</b>	<10.0%	10.0-14.9%	≥15%
<b>200 or more</b>	New COVID-19 admissions per 100,000 population (7-day total)	NA	<10.0	≥10.0
	Percent of staffed inpatient beds occupied by COVID-19 patients (7-day average)	NA	<10%	≥10.0%

#### Additional Resources:

- Washington State Department of Health COVID-19 Data Dashboard: <https://doh.wa.gov/emergencies/covid-19/data-dashboard>