

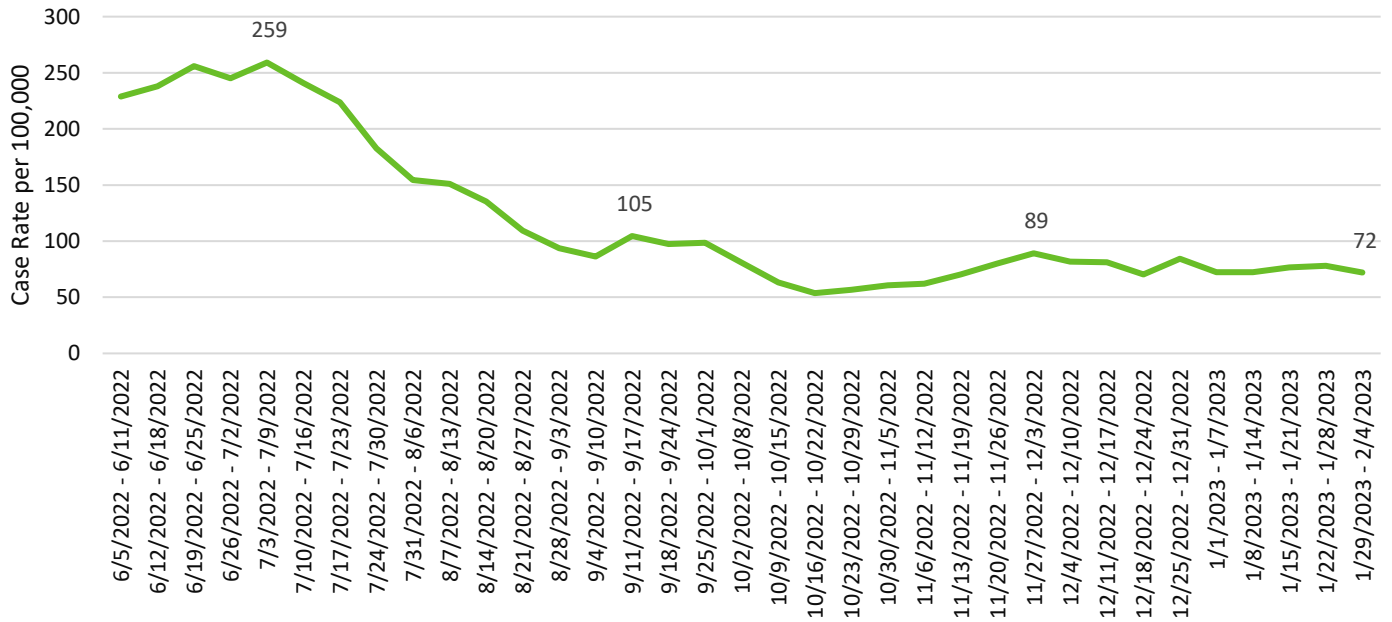
# Weekly COVID-19 Graphs

June 5, 2022 – February 4, 2023

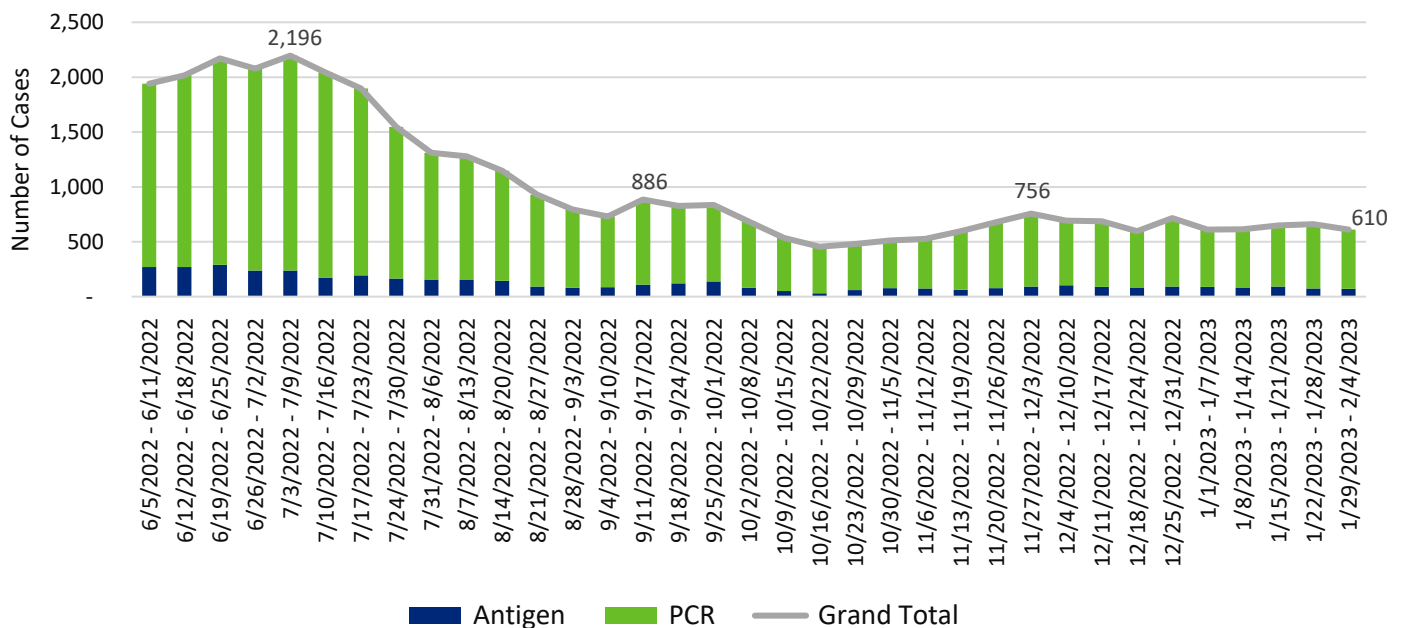
## CASE DATA:

The Washington State Disease Reporting System (WDRS) is the data source for all case data. Some data have been suppressed due to inaccuracies. Not all tables and graphs will have the same denominator. All trend data are by symptom onset date or date of first positive COVID test. All data are preliminary and subject to change.

### Snohomish County COVID-19 Weekly Case Rates per 100,000 by Symptom Onset Date



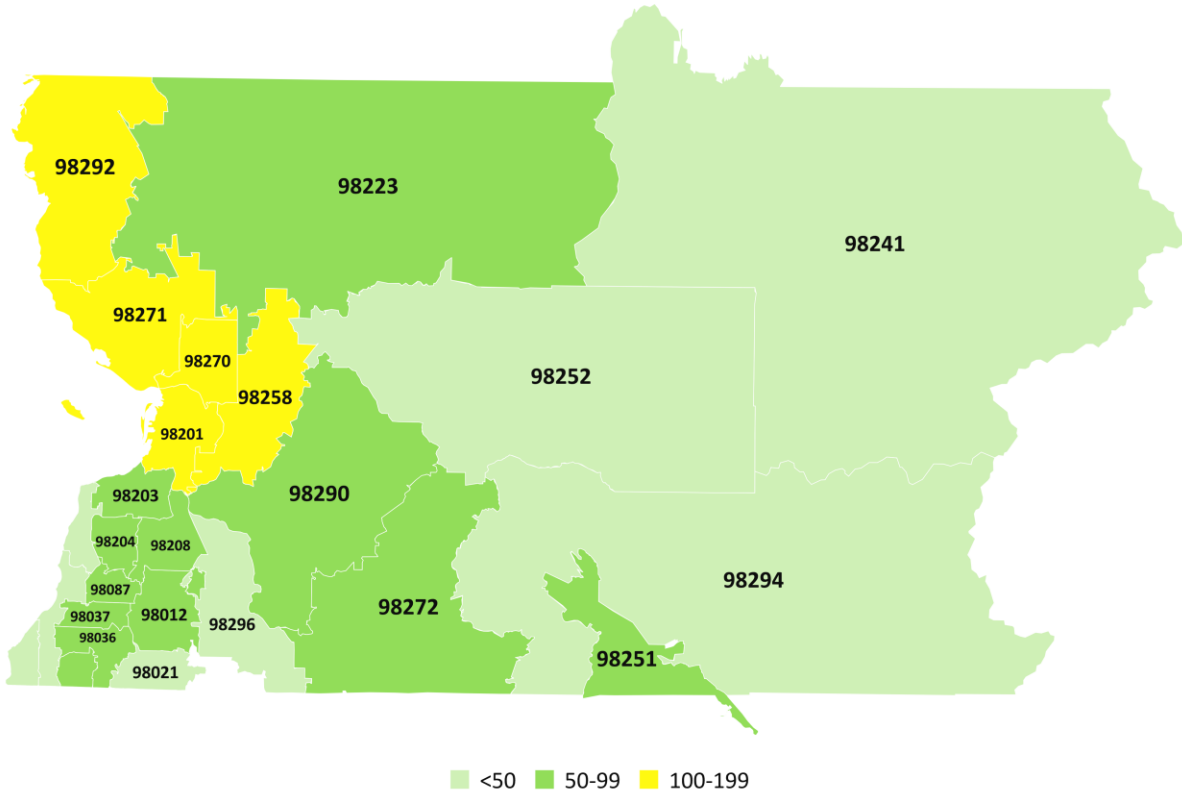
### Snohomish County COVID-19 Cases by Onset Date



# Weekly COVID-19 Graphs

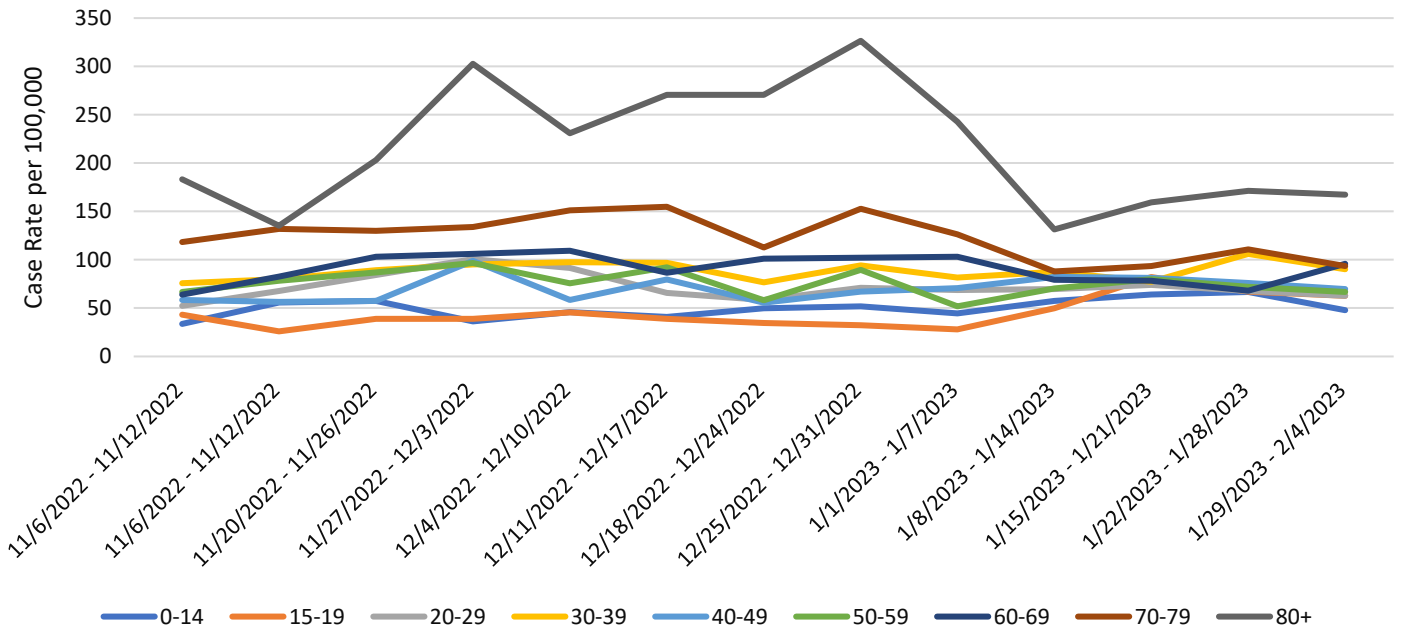
June 5, 2022 – February 4, 2023

## Snohomish County COVID-19 Case Rates per 100,000 by Zip Code January 29 - February 4, 2023



Powered by Bing  
© TomTom

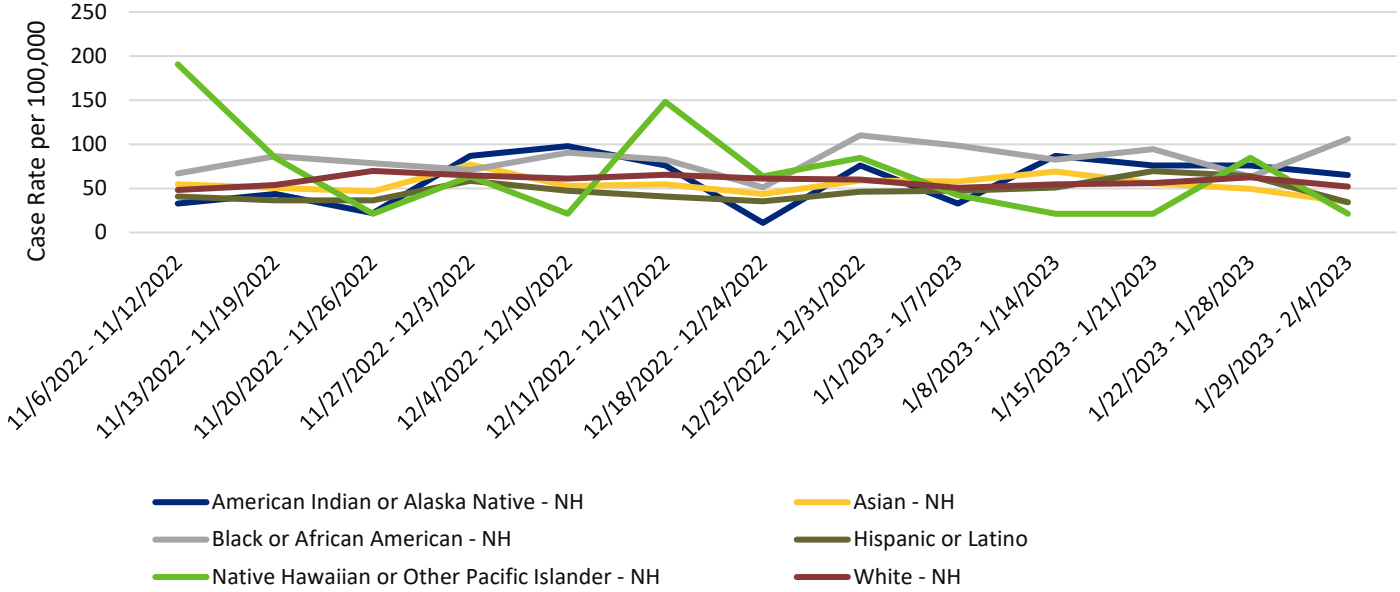
## Snohomish County COVID-19 Case Rates per 100,000 by Illness Onset Date and Age Group



# Weekly COVID-19 Graphs

June 5, 2022 – February 4, 2023

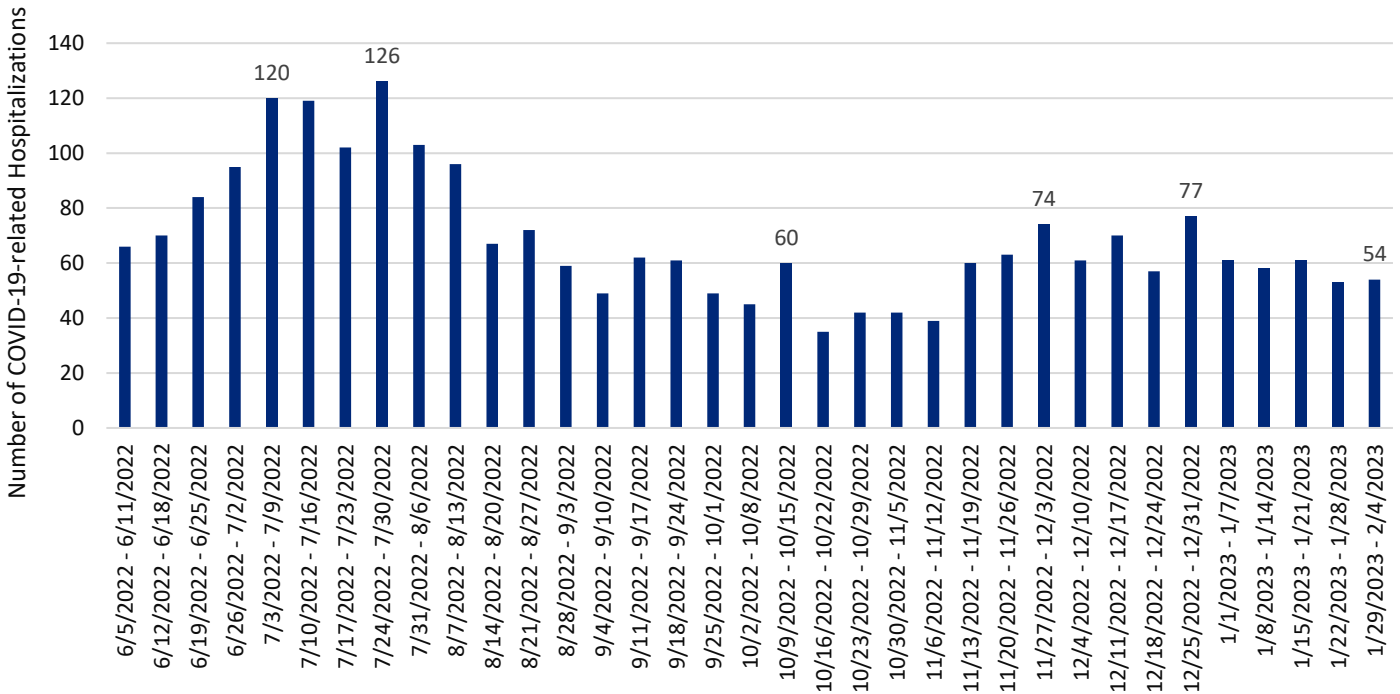
## Snohomish County COVID-19 Case Rates per 100,000 by Illness Onset Date and Race/Ethnicity



\*Note: Due to technical issues with WDRS Hispanic or Latino have not been included since mid-November

### HOSPITALIZATIONS:

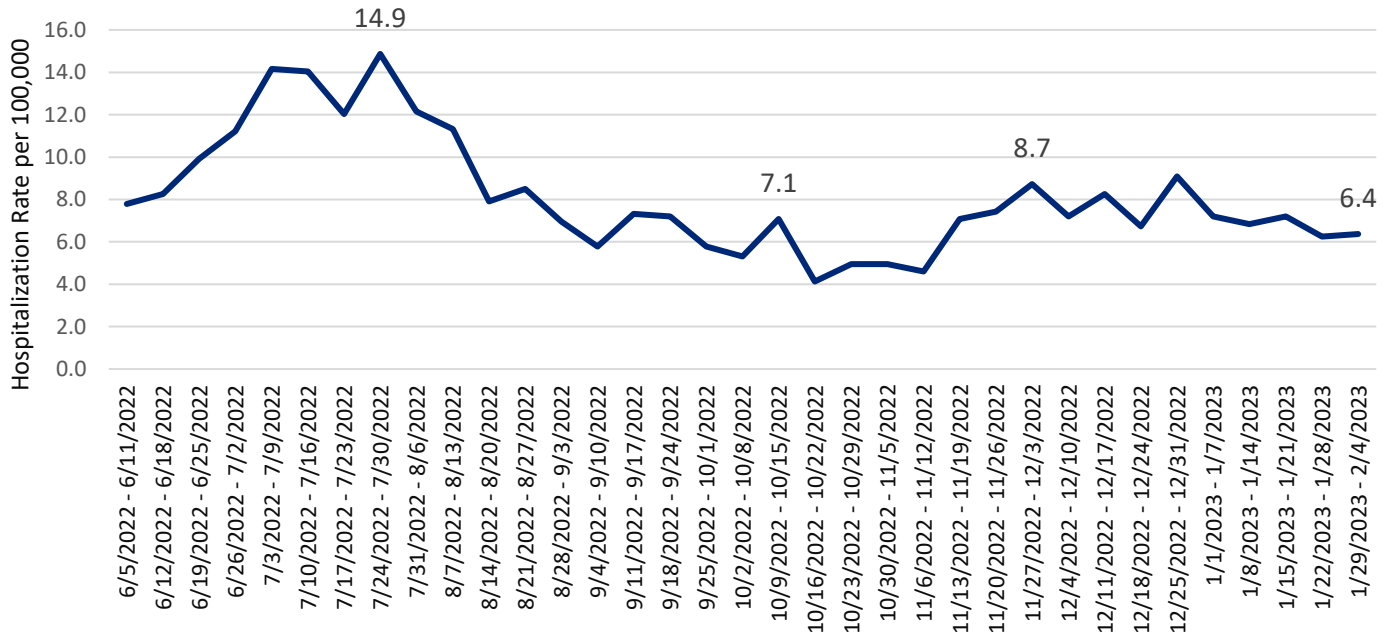
## Snohomish County COVID-related Hospitalizations by Week of Illness Onset



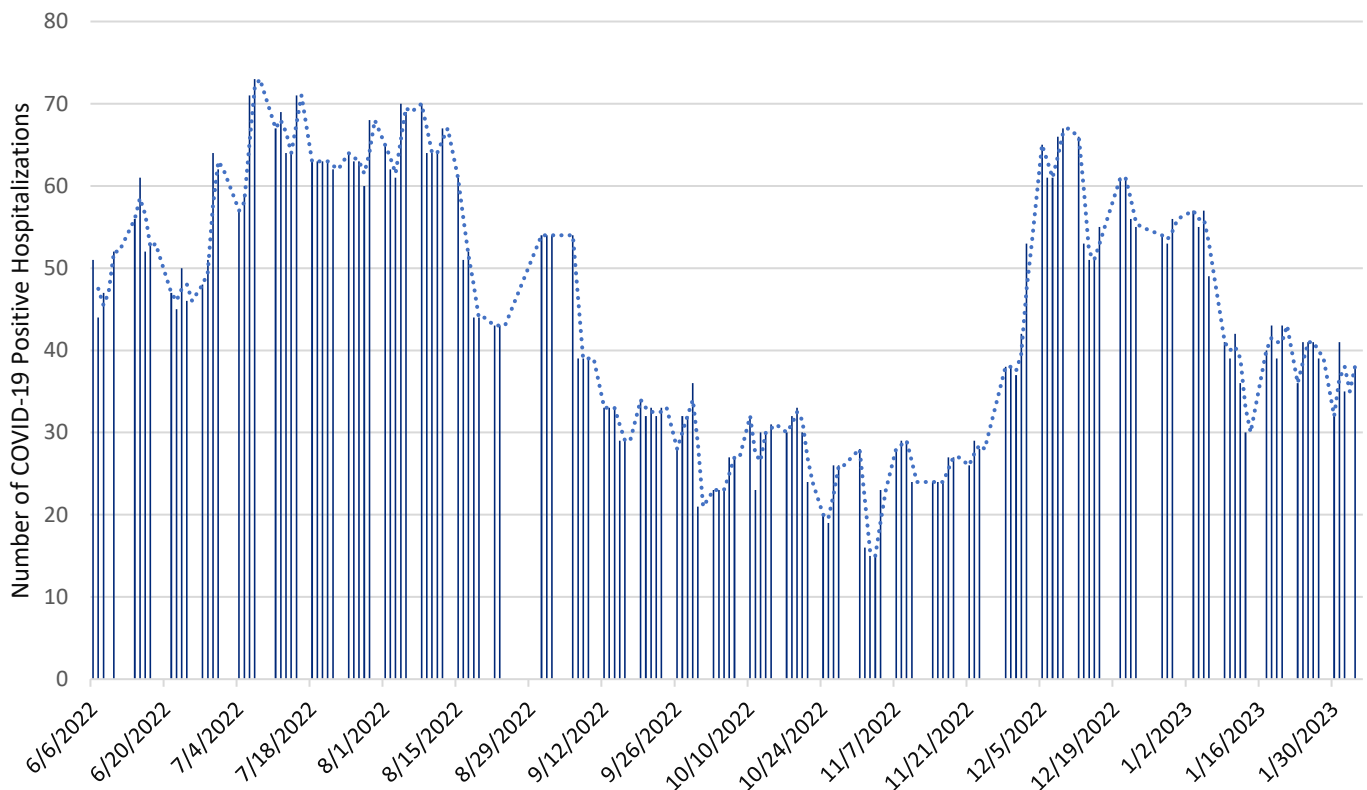
# Weekly COVID-19 Graphs

June 5, 2022 – February 4, 2023

## Snohomish County COVID-19 Hospitalization Case Rate per 100,000 by Week of Illness Onset



## Snohomish County Point-in-Time COVID-19 Hospital Census

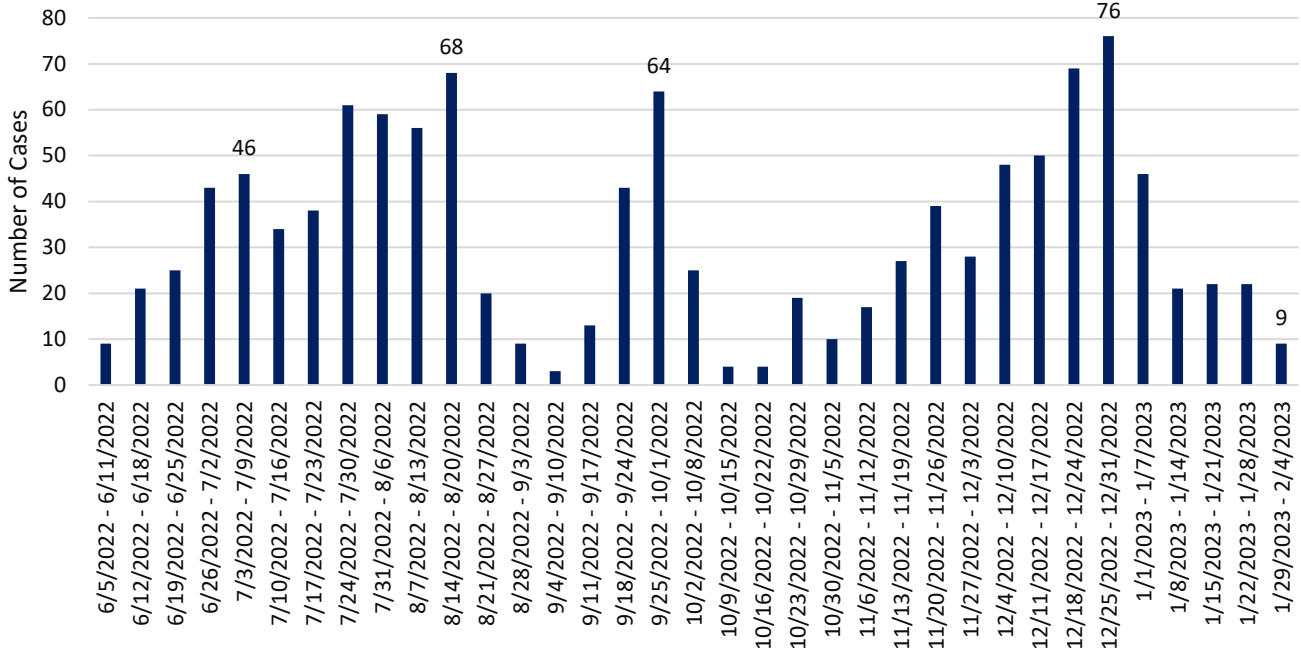


\*Data source: WA Health (wahealth.doh.wa.gov)

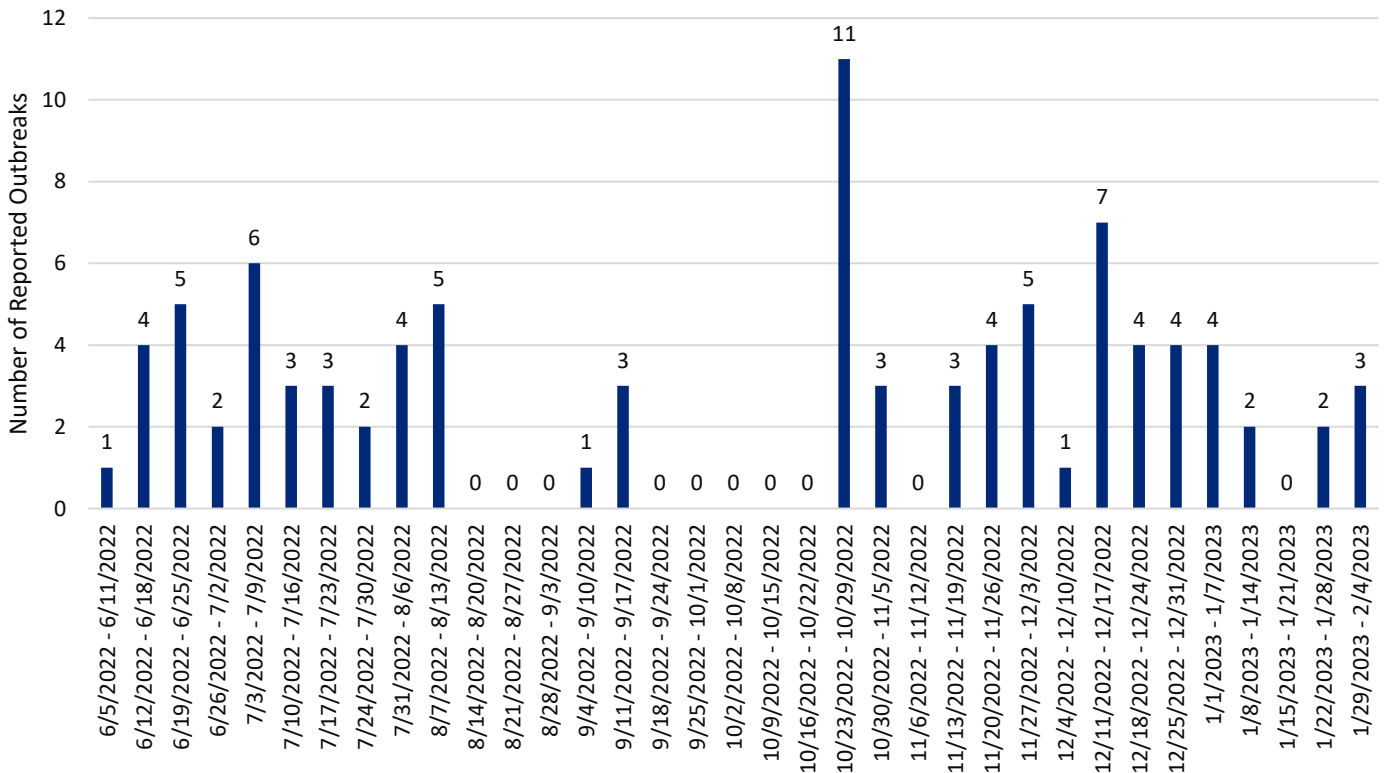
## Weekly COVID-19 Graphs

June 5, 2022 – February 4, 2023

### Snohomish County Long-term Care Facility Outbreak Associated COVID-19 Cases by Onset Date



### Snohomish County Long-term Care Facility & Adult Family Home COVID- 19 Outbreaks by Date of Outbreak Notification



## Weekly COVID-19 Graphs

June 5, 2022 – February 4, 2023

New Cases (per 100,000 population in the last 7 days)	Indicators	Low	Medium	High
<b>Fewer than 200</b>  <span style="font-size: 1.5em; color: blue;">72</span>	New COVID-19 admissions per 100,000 population (7-day total) <span style="font-size: 1.2em; color: blue;">6.4</span>	<10.0	10.0-19.9	≥20.0
	Percent of staffed inpatient beds occupied by COVID-19 patients (7-day average) <span style="font-size: 1.2em; color: blue;">7%</span>	<10.0%	10.0-14.9%	≥15%
<b>200 or more</b>	New COVID-19 admissions per 100,000 population (7-day total)	NA	<10.0	≥10.0
	Percent of staffed inpatient beds occupied by COVID-19 patients (7-day average)	NA	<10%	≥10.0%

### Additional Resources:

- Washington State Department of Health COVID-19 Data Dashboard: <https://doh.wa.gov/emergencies/covid-19/data-dashboard>