

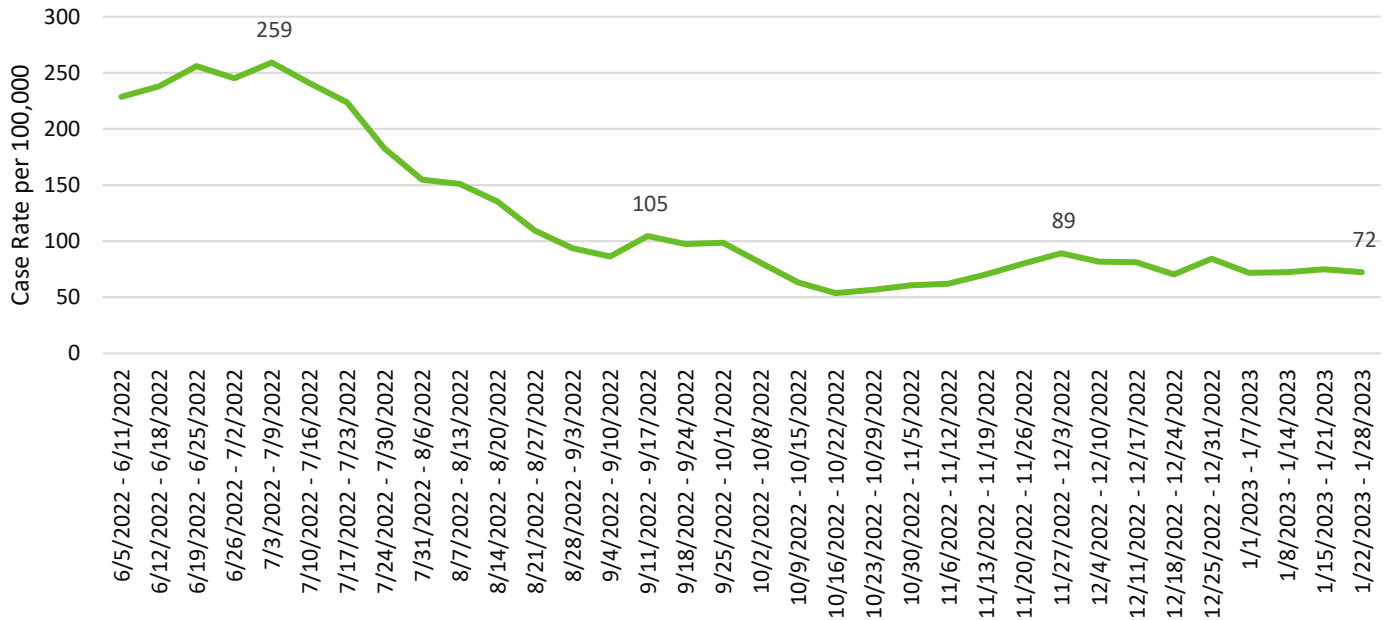
Weekly COVID-19 Graphs

June 5, 2022 – January 28, 2023

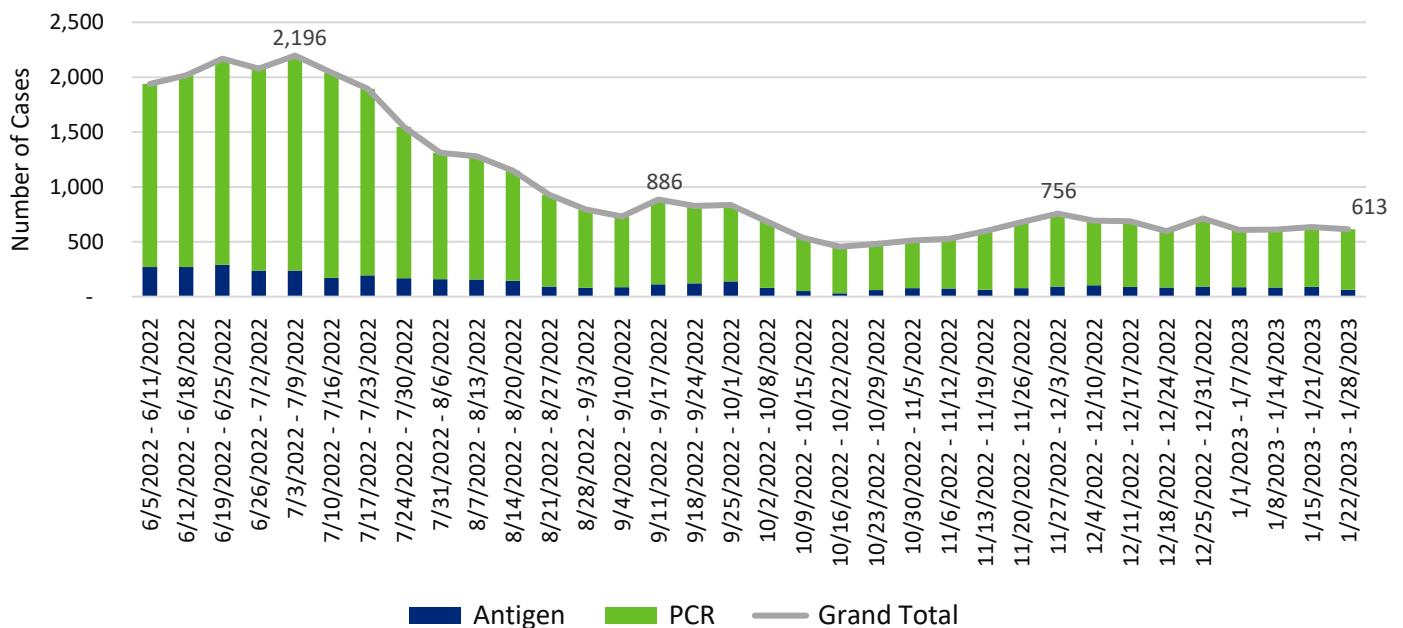
CASE DATA:

The Washington State Disease Reporting System (WDRS) is the data source for all case data. Some data have been suppressed due to inaccuracies. Not all tables and graphs will have the same denominator. All trend data are by symptom onset date or date of first positive COVID test. All data are preliminary and subject to change.

Snohomish County COVID-19 Weekly Case Rates per 100,000 by Symptom Onset Date



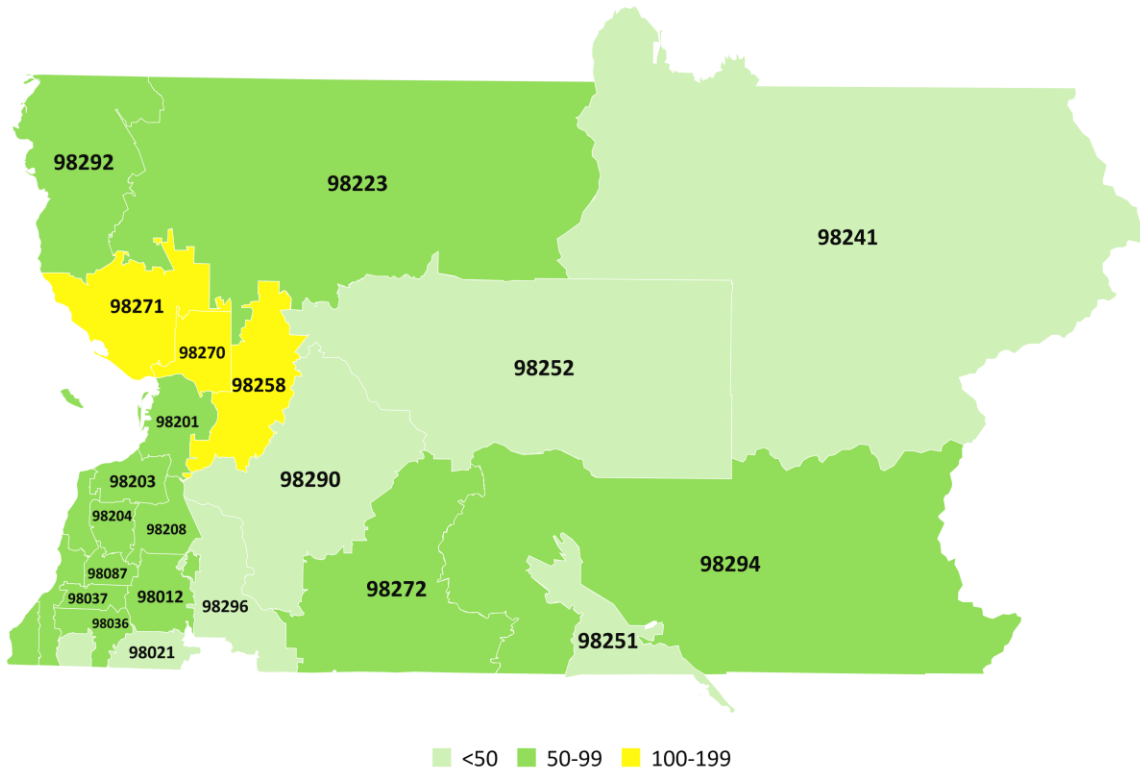
Snohomish County COVID-19 Cases by Onset Date



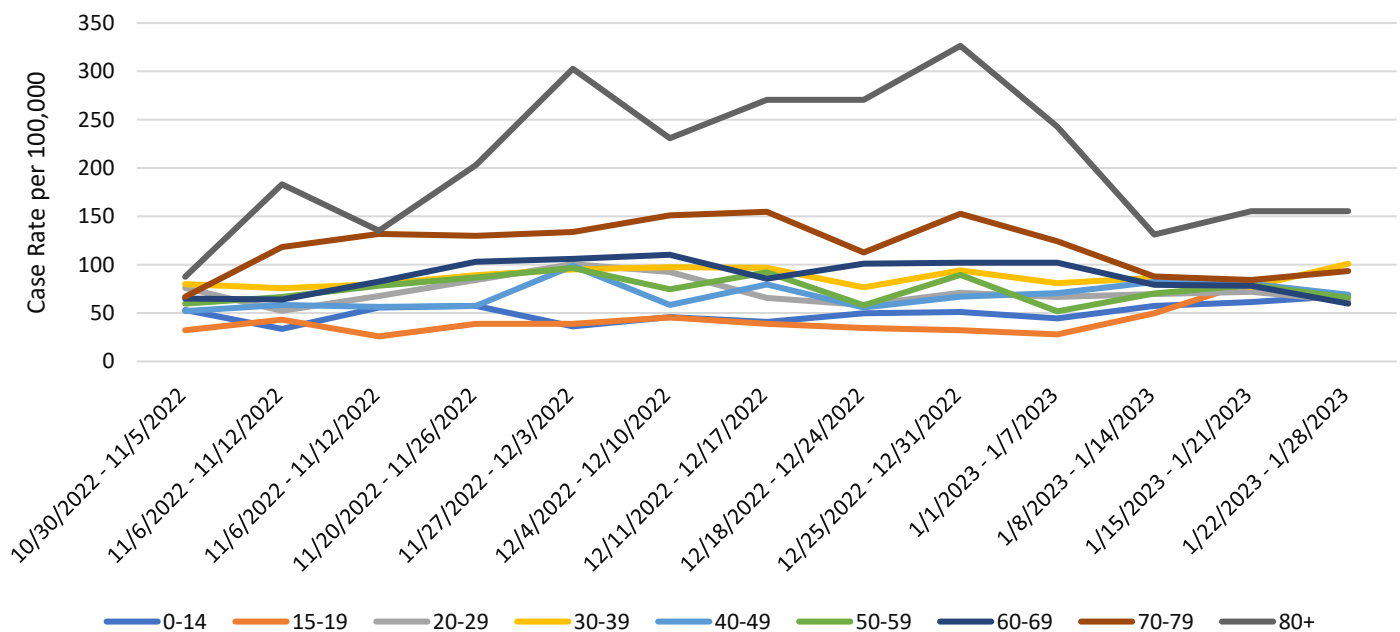
Weekly COVID-19 Graphs

June 5, 2022 – January 28, 2023

Snohomish County COVID-19 Case Rates per 100,000 by Zip Code January 22-28, 2023



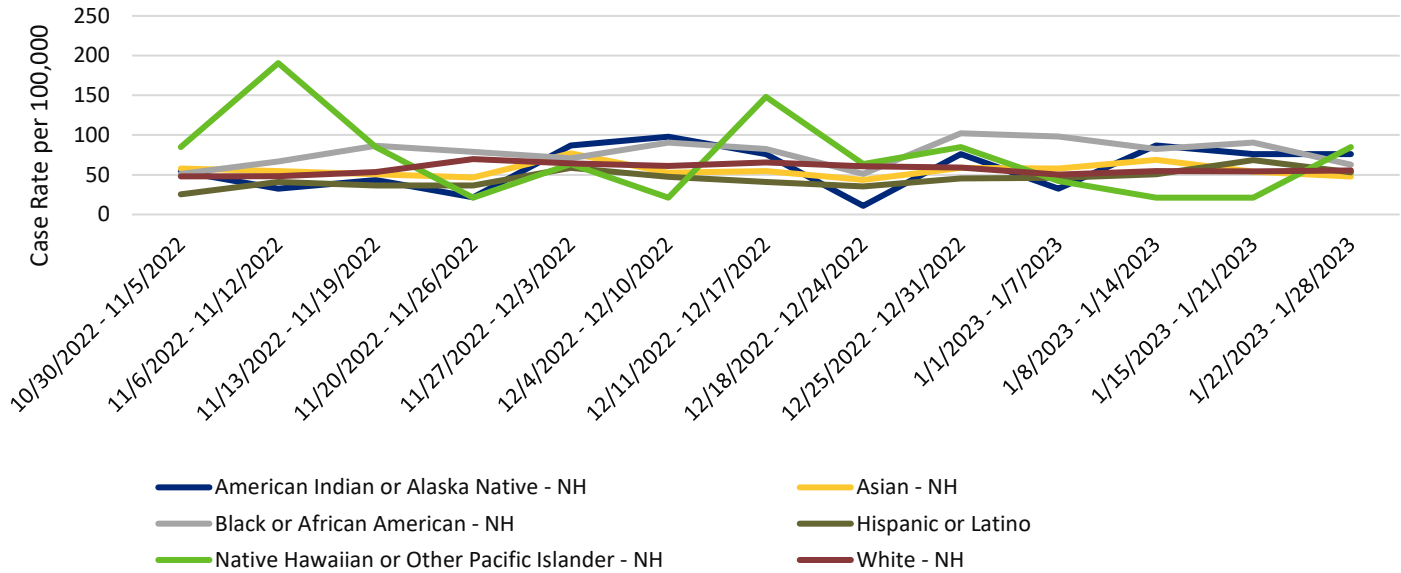
Snohomish County COVID-19 Case Rates per 100,000 by Illness Onset Date and Age Group



Weekly COVID-19 Graphs

June 5, 2022 – January 28, 2023

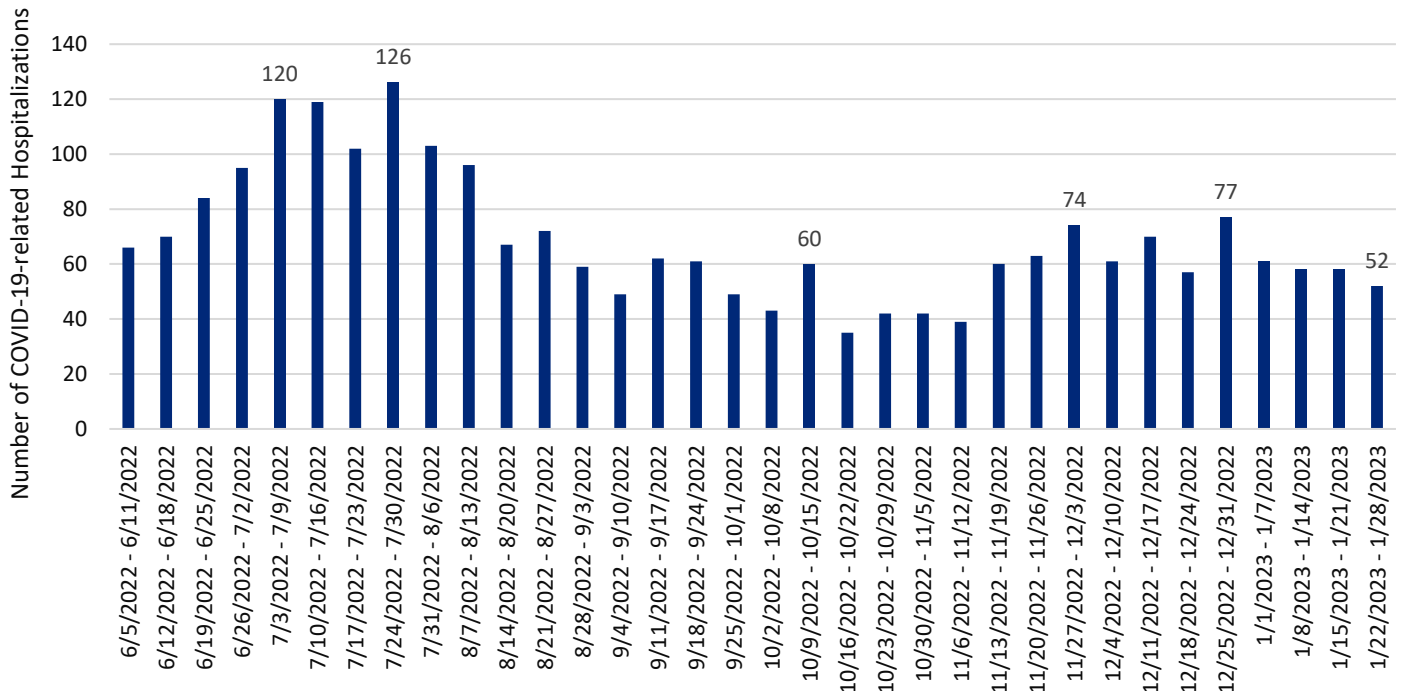
Snohomish County COVID-19 Case Rates per 100,000 by Illness Onset Date and Race/Ethnicity



*Note: Due to technical issues with WDRS Hispanic or Latino have not been included since mid-November

HOSPITALIZATIONS:

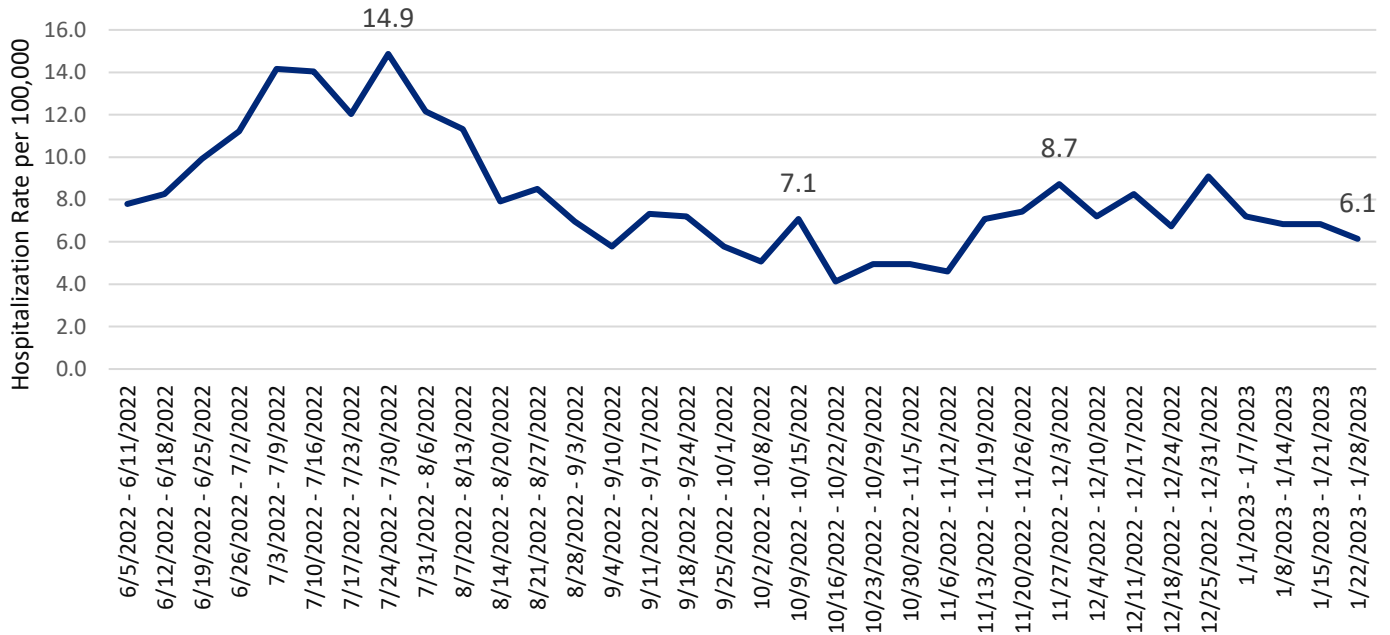
Snohomish County COVID-related Hospitalizations by Week of Illness Onset



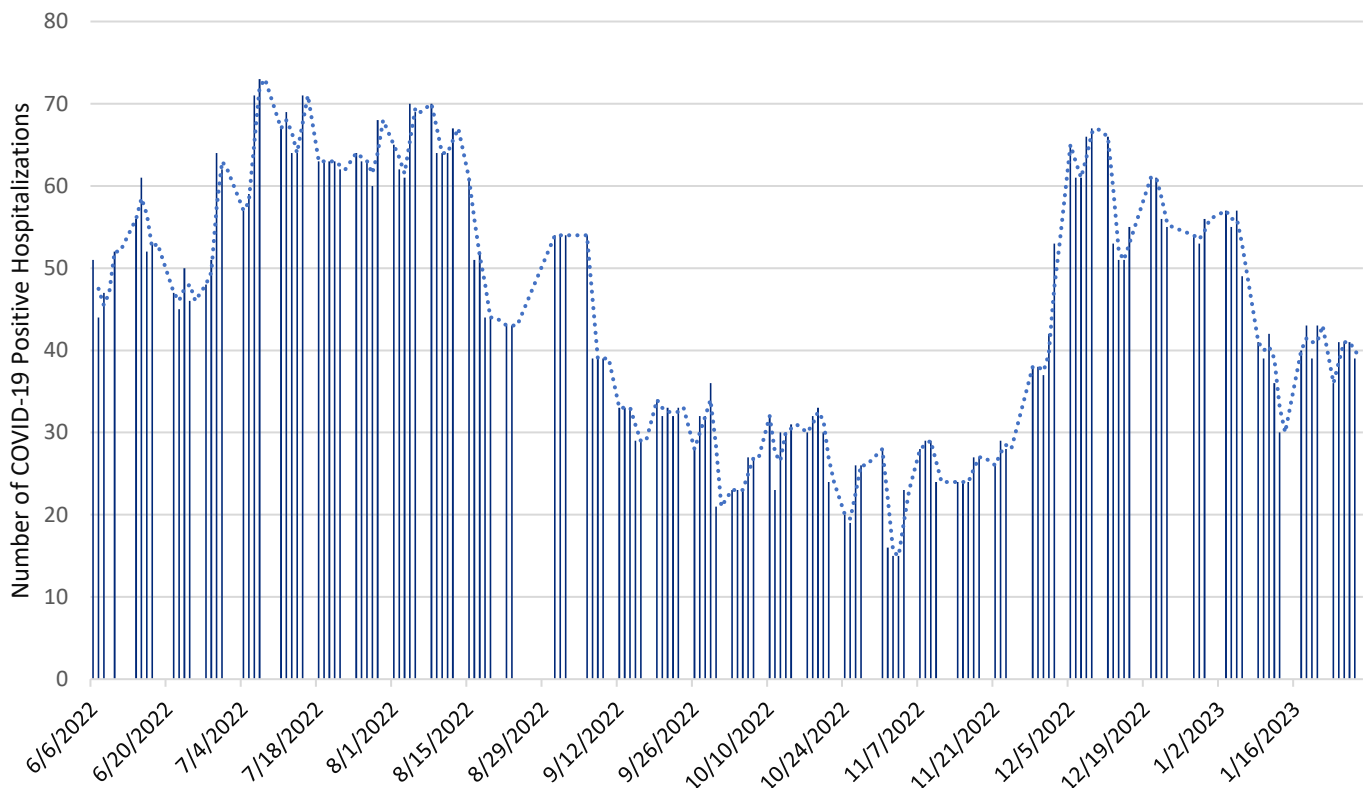
Weekly COVID-19 Graphs

June 5, 2022 – January 28, 2023

Snohomish County COVID-19 Hospitalization Case Rate per 100,000 by Week of Illness Onset



Snohomish County Point-in-Time COVID-19 Hospital Census

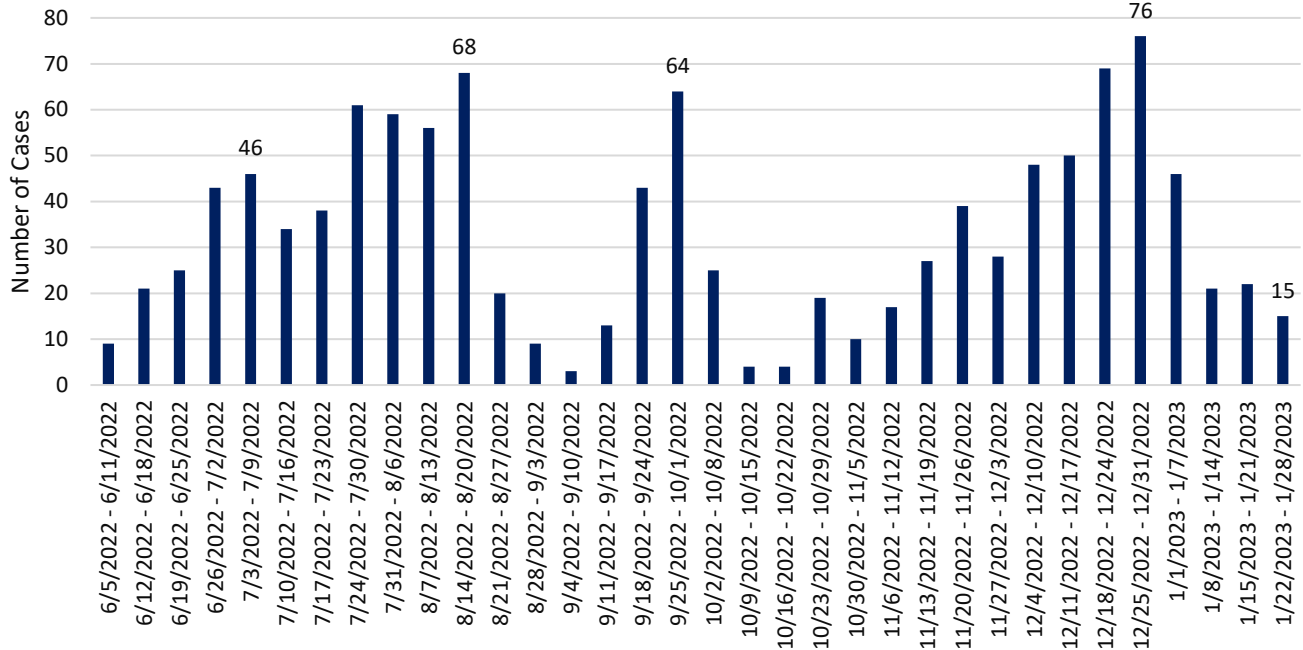


*Data source: WA Health (wahealth.doh.wa.gov)

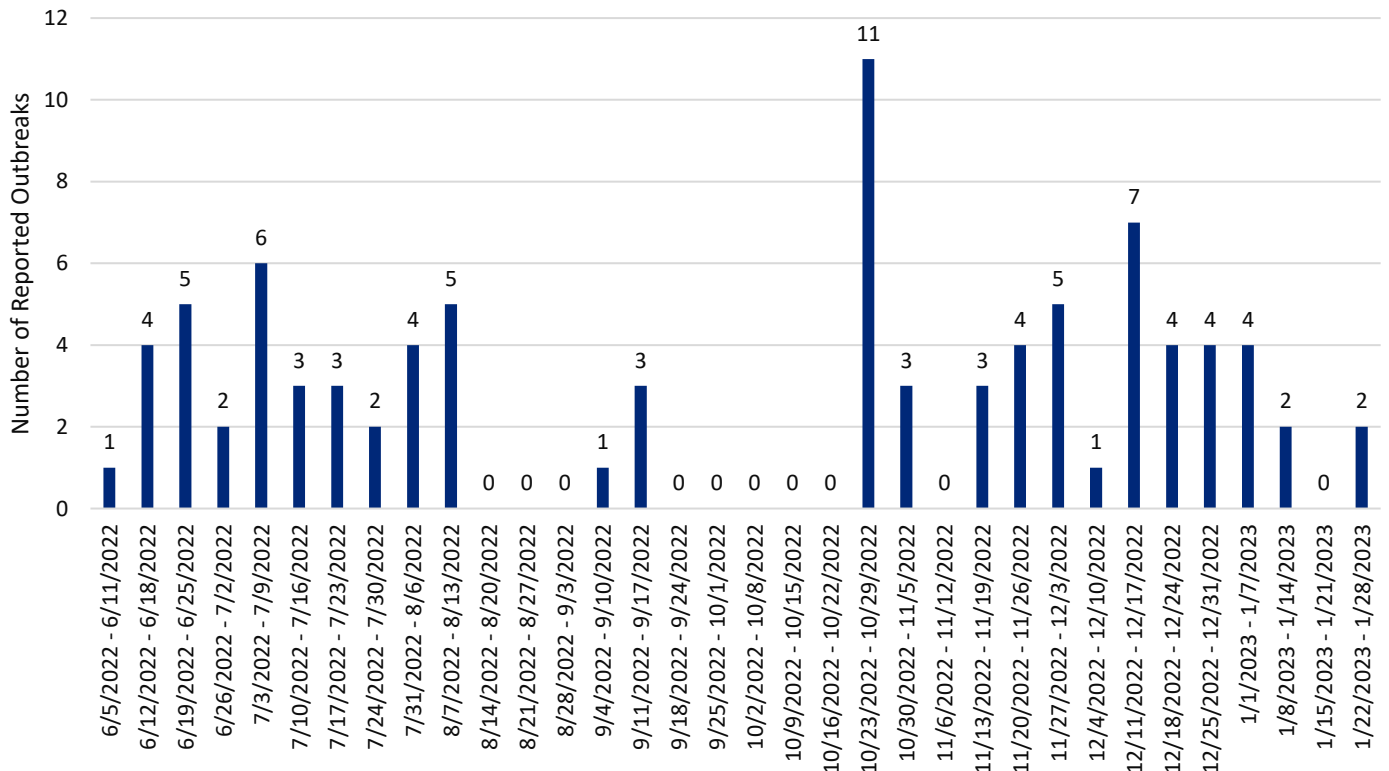
Weekly COVID-19 Graphs

June 5, 2022 – January 28, 2023

Snohomish County Long-term Care Facility Outbreak Associated COVID-19 Cases by Onset Date



Snohomish County Long-term Care Facility & Adult Family Home COVID-19 Outbreaks by Date of Outbreak Notification



Weekly COVID-19 Graphs

June 5, 2022 – January 28, 2023

New Cases (per 100,000 population in the last 7 days)	Indicators	Low	Medium	High
Fewer than 200 72	New COVID-19 admissions per 100,000 population (7-day total) 6.1	<10.0	10.0-19.9	≥20.0
	Percent of staffed inpatient beds occupied by COVID-19 patients (7-day average) 6%	<10.0%	10.0-14.9%	≥15%
200 or more	New COVID-19 admissions per 100,000 population (7-day total)	NA	<10.0	≥10.0
	Percent of staffed inpatient beds occupied by COVID-19 patients (7-day average)	NA	<10%	≥10.0%

Additional Resources:

- Washington State Department of Health COVID-19 Data Dashboard: <https://doh.wa.gov/emergencies/covid-19/data-dashboard>