



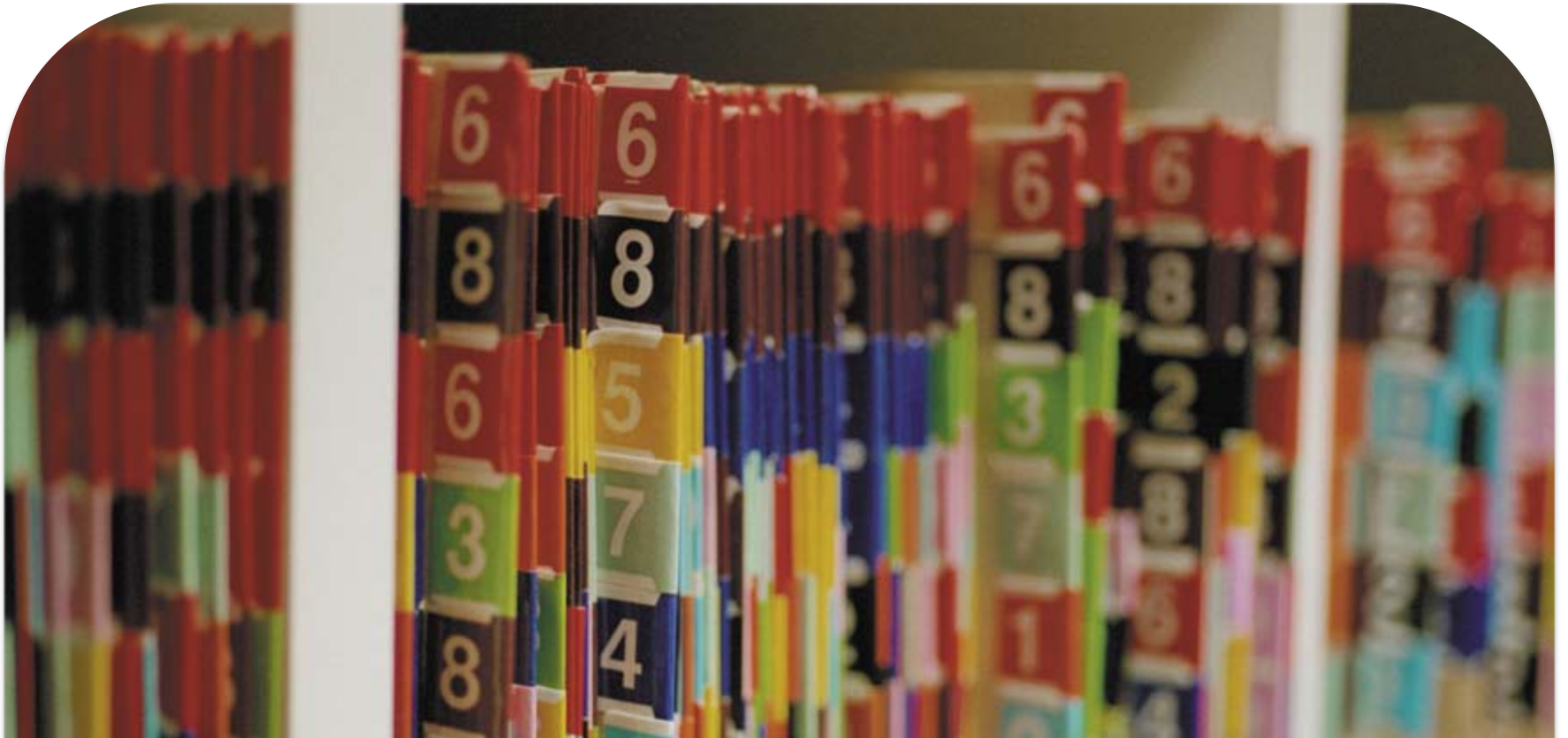
Health & Behaviors in Snohomish County

A summary of trends from the
2009 Behavioral Risk Factor Surveillance System (BRFSS)



Access to Care

Health Statistics & Assessment | April 2011



Insurance • Unemployment • Check-Ups

Access to Care

How to use the data

Noun: **trend analysis** - analysis of changes over time

The BRFSS¹ data contained in this document can be used to educate and inform others about the trends of health measures in Snohomish County.

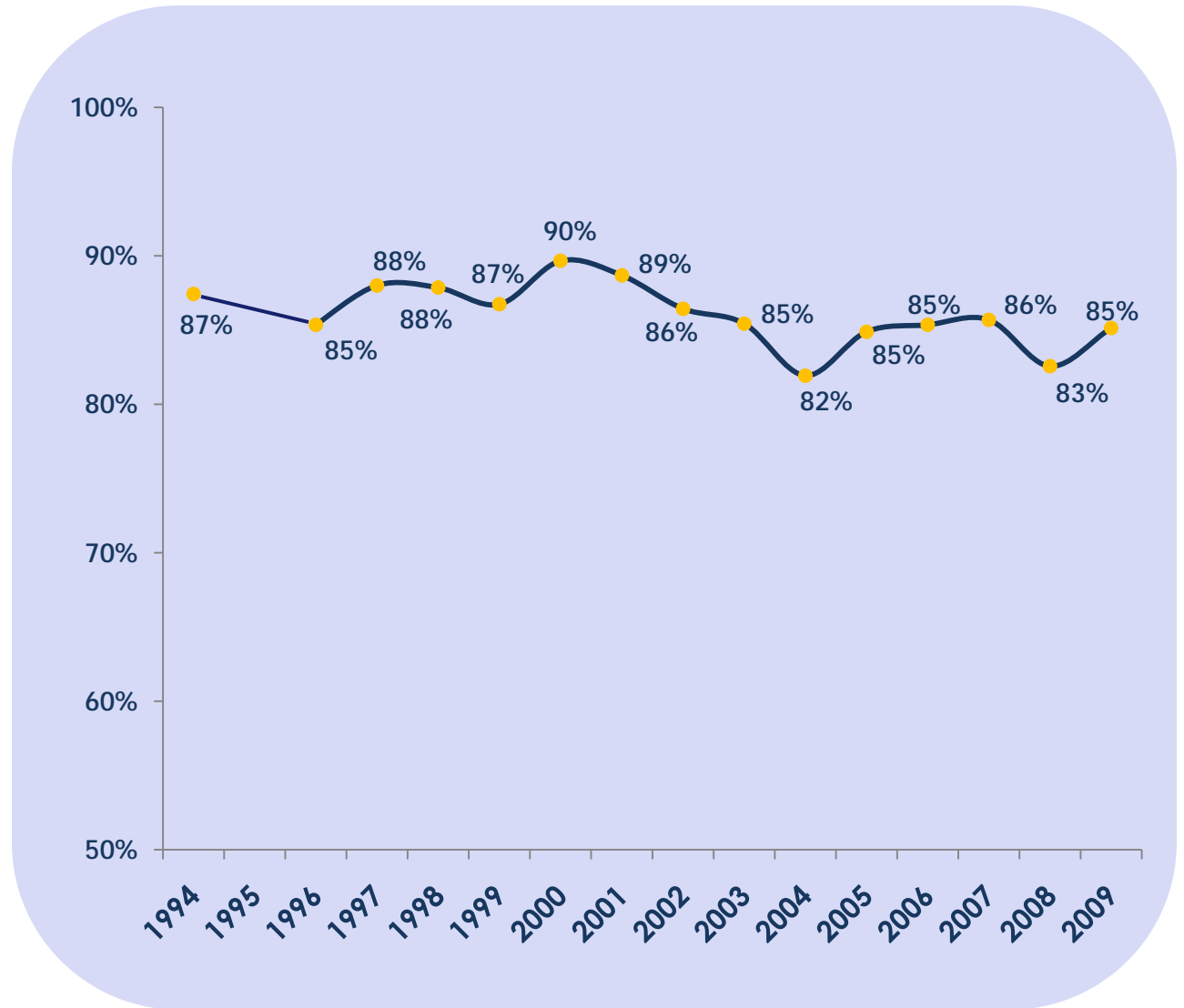
Other uses for the data include:

- Identify needs, direction, target populations, and indicators
- Assist in planning, goal setting, and/or establishing priorities
- Evaluate programs
- Obtain grants
- Formulate policy



1. The Behavioral Risk Factor Surveillance System (BRFSS) is an ongoing, state-based telephone surveillance system (survey) supported by the Centers for Disease Control and Prevention (CDC).

- Most of Snohomish County adults younger than age 65 (85.1%) had some form of health insurance during 2009.
- There was no significant change in the proportion of adults younger than age 65 without some form of health insurance from 1994 through 2009.
- Nearly all adults age 65 and older had health insurance because of Medicare (not shown).



**Adults <65 without Health Insurance
Snohomish County, 1994-2009**

- In 2009 about one in six Snohomish County adults younger than age 65 (15.9%) was unable to obtain some type of medical care because they could not afford it.

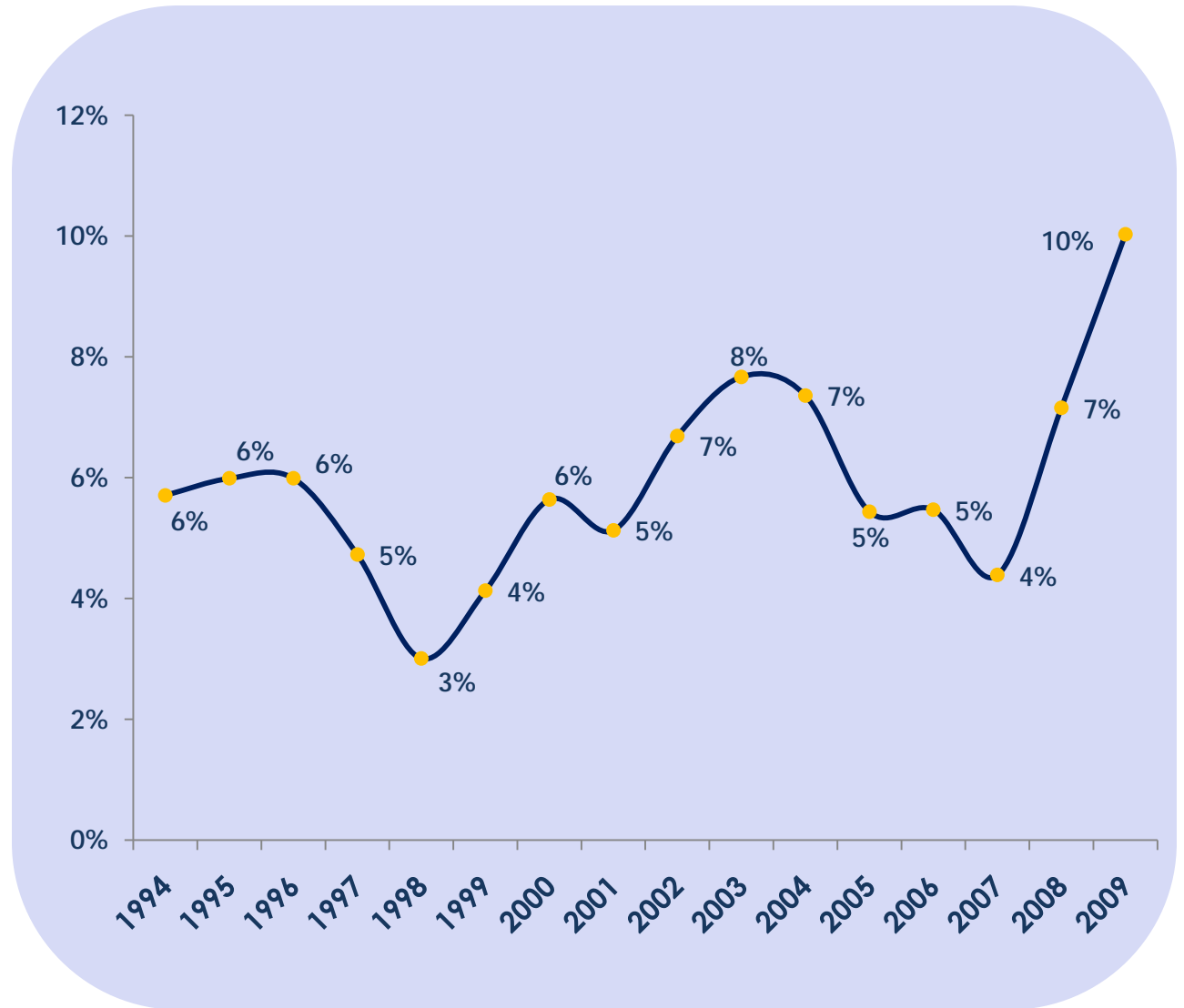
- The proportion of adults younger than age 65 who could not afford medical care was 59.0% higher in 2009 than in 1997 ($P = 0.02$).



Adults <65 Unable to Obtain Care Because of Cost
Snohomish County, 1997-2009

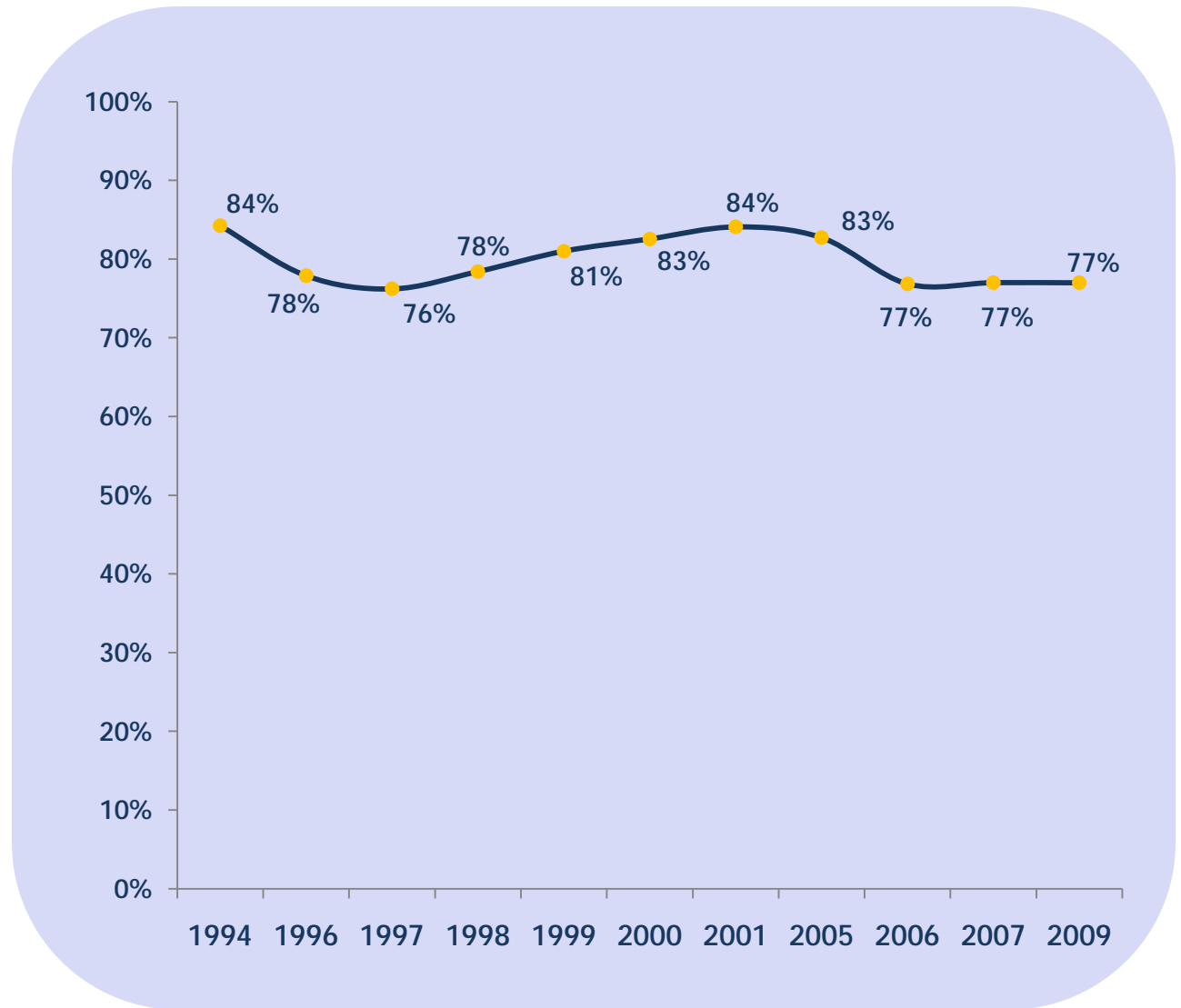
- One in ten Snohomish County adults (10.0%) was unemployed in 2009.

- Between 2007 and 2009, the county's unemployment rate doubled ($P = 0.02$). However, this followed a decrease of 42.9% in unemployment between 2003 and 2007.



- More than three quarters of Snohomish County adults (77.0%) had a medical check-up in the prior two years.

- There was no significant trend in the proportion of adults who had a medical check-up in the prior two years.



Access to Care in Snohomish County:

- Among adults younger than age 65 who did not have health insurance, nearly half (47.0%) were unable to obtain some type of care due to cost in the past year.
- Since 1997 the proportion of young adults who could not obtain medical care because of cost increased by 59% to about 1 in 6 adults in 2009.
- Less than half (48.7%) of adults without health insurance received a routine check- up in the prior two years.

Health Statistics & Assessment (HSA) has a repository of data available by contacting:

425.339.8618 | www.snohd.org

PUBLIC HEALTH
always working for a safer & healthier
SNOHOMISH COUNTY

Data Analysis: Mark Serafin, MA, MS

Manager: Jane Ballard, PhD, MS

Concept & Graphics: Wendy Burchill-Blaisdell



Contact Information