

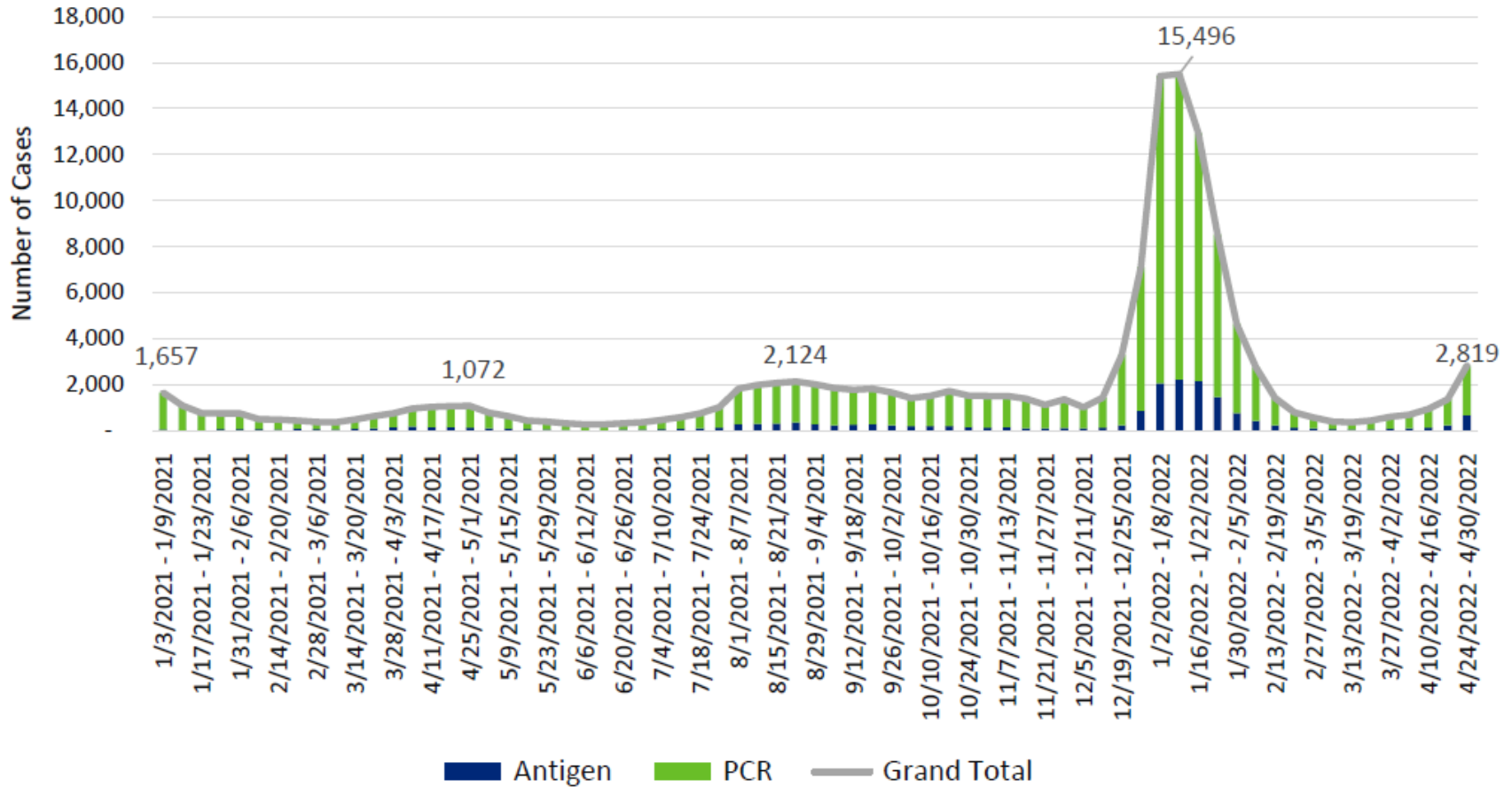
COVID-19 Update

Press Briefing



COVID-19 Weekly Case Counts

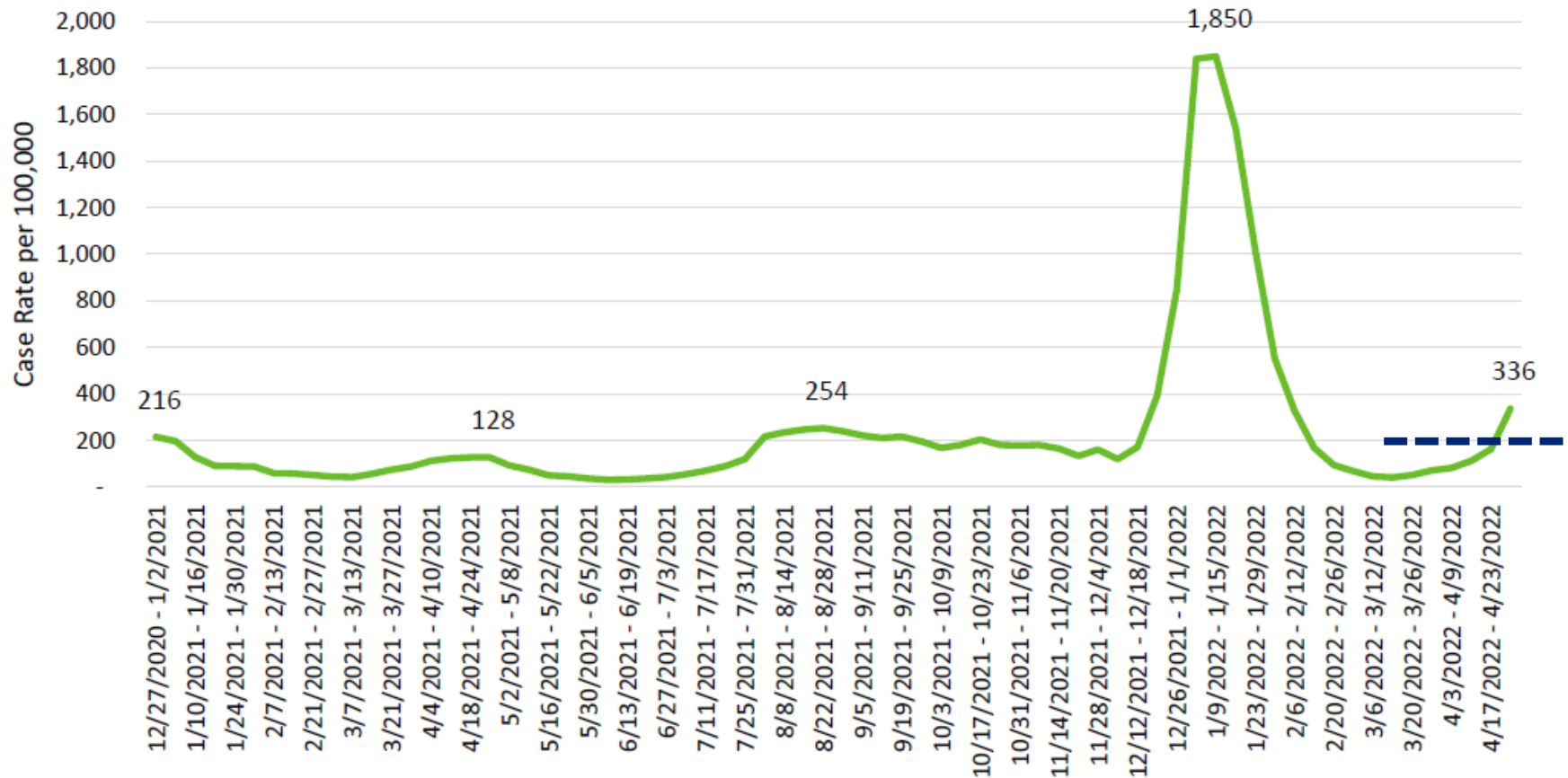
Snohomish County COVID-19 Cases by Onset Date



Through April 30, 2022

COVID-19 7-day Case Rate

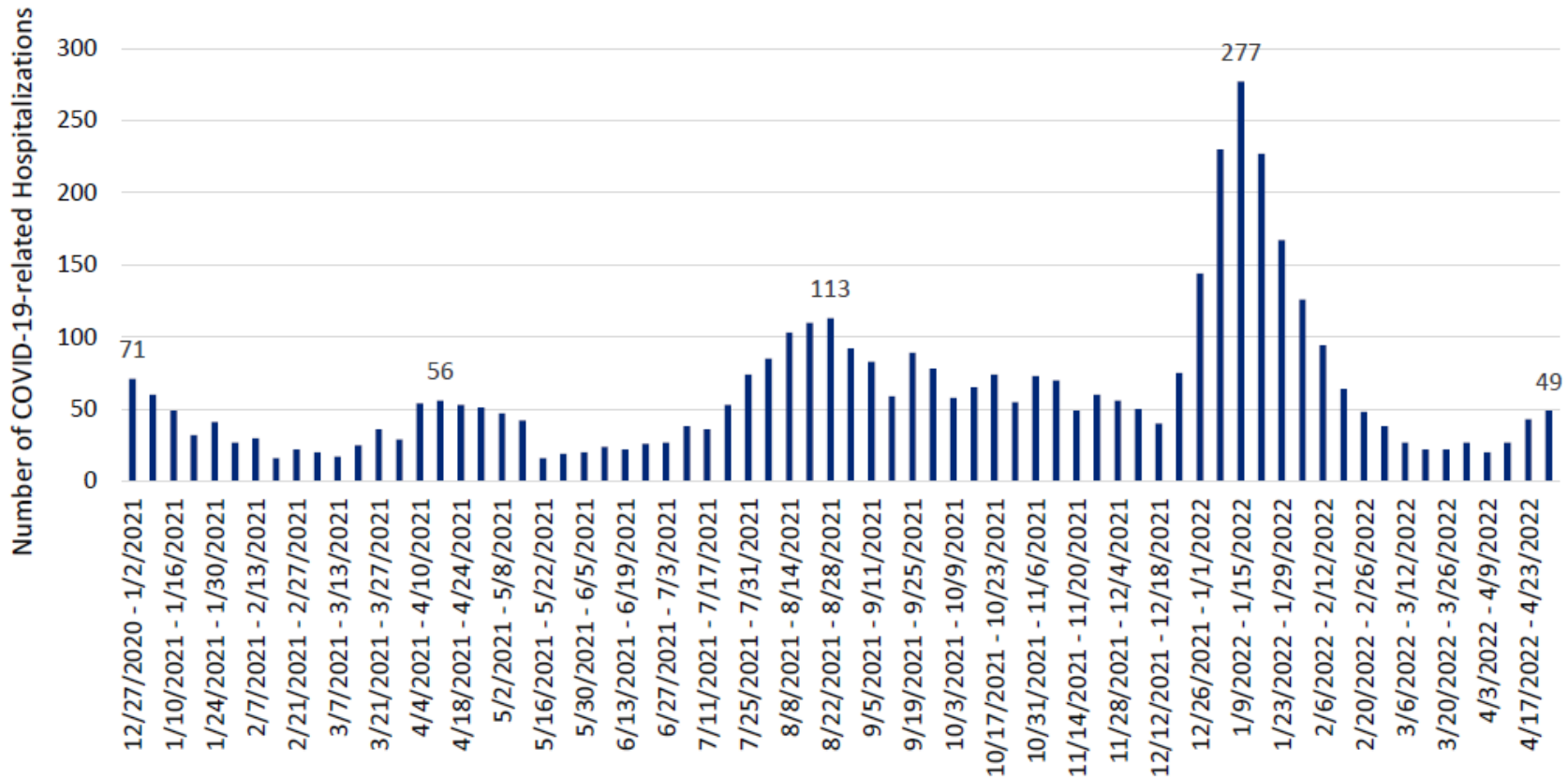
Snohomish County COVID-19 Weekly Case Rates per 100,000 by Symptom Onset Date



Through April 30, 2022

COVID-19 Hospitalizations

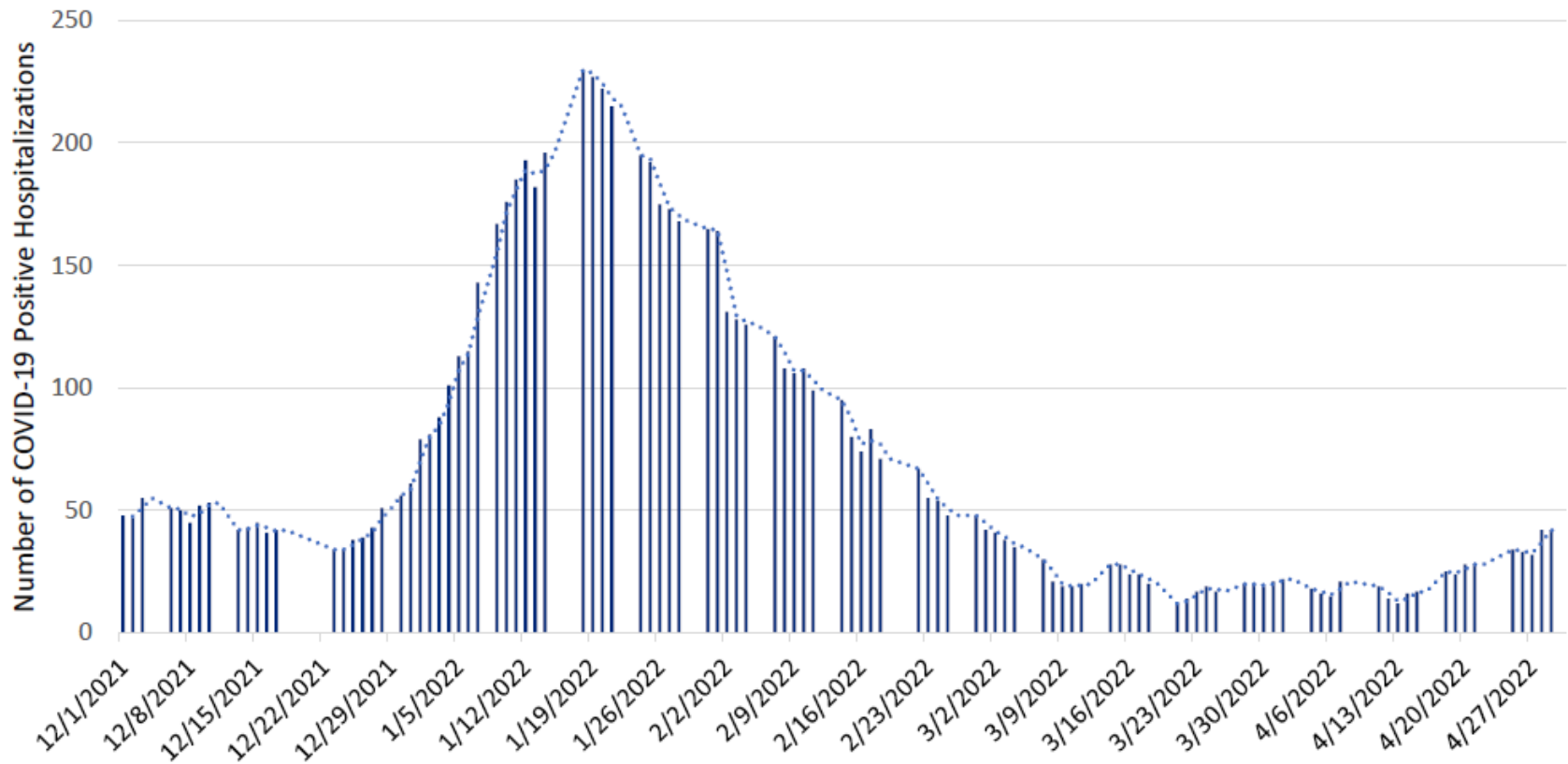
Snohomish County COVID-related Hospitalizations by Week of Illness Onset



Through April 30, 2022

COVID-19 Hospital Census Snohomish County Facilities

Snohomish County Point-in-Time COVID-19 Hospital Census



Through April 30, 2022

COVID-19 Community Level

- Prevent severe disease, death and disability
- Protect healthcare system capacity

CDC's COVID-19 Community Levels and Indicators

New Cases (per 100,000 population in the last 7 days)	Indicators	Low	Medium	High
Fewer than 200	New COVID-19 admissions per 100,000 population (7-day total)	<10.0	10.0-19.9	≥20.0
	Percent of staffed inpatient beds occupied by COVID-19 patients (7-day average)	<10.0%	10.0-14.9%	≥15.0%
200 or more	New COVID-19 admissions per 100,000 population (7-day total)	NA	<10.0	≥10.0
	Percent of staffed inpatient beds occupied by COVID-19 patients (7-day average)	NA	<10.0%	≥10.0%

The COVID-19 community level is determined by the higher of the inpatient beds and new admissions indicators, based on the current level of new cases per 100,000 population in the past 7 days